

Product datasheet for **RC213185L1V**

FOXO4 (NM_005938) Human Tagged ORF Clone Lentiviral Particle

Product data:

Product Type:	Lentiviral Particles
Product Name:	FOXO4 (NM_005938) Human Tagged ORF Clone Lentiviral Particle
Symbol:	FOXO4
Synonyms:	AFX; AFX1; MLLT7
Mammalian Cell Selection:	None
Vector:	pLenti-C-Myc-DDK (PS100064)
Tag:	Myc-DDK
ACCN:	NM_005938
ORF Size:	1515 bp
ORF Nucleotide Sequence:	The ORF insert of this clone is exactly the same as(RC213185).
OTI Disclaimer:	The molecular sequence of this clone aligns with the gene accession number as a point of reference only. However, individual transcript sequences of the same gene can differ through naturally occurring variations (e.g. polymorphisms), each with its own valid existence. This clone is substantially in agreement with the reference, but a complete review of all prevailing variants is recommended prior to use. More info
OTI Annotation:	This clone was engineered to express the complete ORF with an expression tag. Expression varies depending on the nature of the gene.
RefSeq:	NM_005938.2
RefSeq Size:	3365 bp
RefSeq ORF:	1518 bp
Locus ID:	4303
UniProt ID:	P98177
Cytogenetics:	Xq13.1
Domains:	FH
Protein Families:	Transcription Factors

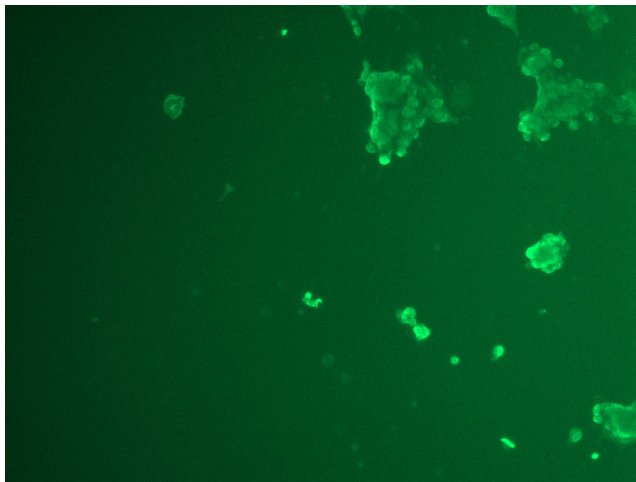


[View online »](#)

MW: 53.7 kDa

Gene Summary: This gene encodes a member of the O class of winged helix/forkhead transcription factor family. Proteins encoded by this class are regulated by factors involved in growth and differentiation indicating they play a role in these processes. A translocation involving this gene on chromosome X and the homolog of the Drosophila trithorax gene, encoding a DNA binding protein, located on chromosome 11 is associated with leukemia. Multiple transcript variants encoding different isoforms have been found for this gene. [provided by RefSeq, Jan 2010]

Product images:



[RC213185L1] was used to prepare Lentiviral particles using [TR30037] packaging kit. HEK293T cells were transduced with RC213185L1V particle to overexpress human FOXO4-Myc-DDK fusion protein.