

Product datasheet for **RC213183**

DYRK1A (NM_130436) Human Tagged ORF Clone

Product data:

Product Type:	Expression Plasmids
Product Name:	DYRK1A (NM_130436) Human Tagged ORF Clone
Tag:	Myc-DDK
Symbol:	DYRK1A
Synonyms:	DYRK; DYRK1; HP86; MNB; MNBH; MRD7
Mammalian Cell Selection:	Neomycin
Vector:	pCMV6-Entry (PS100001)
E. coli Selection:	Kanamycin (25 ug/mL)



[View online »](#)

ORF Nucleotide Sequence:

>RC213183 representing NM_130436
 Red=Cloning site Blue=ORF Green=Tags(s)

TTTTGTAATACGACTCACTATAGGGCGGCCGGGAATTCGTCGACTGGATCCGGTACCGAGGAGATCTGCC
 GCC**CGGATCGCC**

ATGCATACAGGAGAGACTTCAGCATGCAAACCTTCATCTGTTGCGCTTGCACCGTCATTTTCATTCC
 ATGCTGCTGGCCTTCAGATGGCTGGACAGATGCCCCATTACATCAGTACAGTGACCGTCGCCAGCCAAA
 CATAAGTGACCAACAGGTTTCTGCCTTATCATATTCTGACCAGATTTCAGCAACCTCTAACTAACCGAGG
 CGGATGCCCAAACCTTCCGTGACCCAGCAACTGCTCCCCTGAGAAAACCTTCTGTTGACTTGATCAAAA
 CATACAAGCATATTAATGAGGTTTACTATGCAAAAAAGAAGCGAAGACACCAACAGGGCCAGGGAGACGA
 TTCTAGTCATAAGAAGGAACGGAAGTTTACAATGATGGTTATGATGATGATAACTATGATTATATTGTA
 AAAAACGGAGAAAAGTGGATGGATCGTTACGAAATTGACTCCTTGATAGGCAAAGTTCTTTGGACAGG
 TTGTAAGGCATATGATCGTGTGGAGCAAGAATGGGTTGCCATTAATAAAGAACAAGAAGGCTTT
 TCTGAATCAAGCACAGATAGAAGTGCAGCTTCTGAGCTCATGAACAAACATGACTGAAATGAAATAC
 TACATAGTGCATTTGAAACGCCACTTTATGTTTCGAAACCATCTCTGTTTGTGTTTGTGAAATGCTGTCT
 ACAACCTCTATGACTTGCTGAGAAACACCAATTTCCGAGGGGTCTCTTTGAACTAACACGAAAGTTTGC
 GCAACAGATGTGCACTGCACTGCTTTTCTTGGACTCCAGAAGTTAGTATCATTCACTGTGATCTAAAA
 CCTGAAAATATCCTTCTTTGTAACCCCAAACGCAGTGAATCAAGATAGTTGACTTTGGCAGTTCTTGTG
 AGTTGGGGCAGAGGATATACCAGTATATTCAGAGTCGCTTTTATCGGTCTCCAGAGGTGCTACTGGGAAT
 GCCTTATGACCTTGCCATTGATATGTGGTCCCTCGGGTGTATTTTGGTTGAAATGCACACTGGAGAACCT
 CTGTTTCAGTGGTCCAAATGAGGTAGATCAGATGAATAAAATAGTGAAGTTCTGGGTATTCACCTGCTC
 ATATTTCTTGACCAAGCACCAAAAGCAAGAAAGTTCTTTGAGAAGTTGCCAGATGGCACTTGAACCTTAA
 GAAGACCAAAGATGGAAAACGGGAGTACAAACCACAGGAACCCGTAAACTTCATAACATTCTTGGAGTG
 GAAACAGGAGGACCTGGTGGGCGACGTGCTGGGGAGTCAGGTCATACGGTCGCTGACTACTTGAAGTTCA
 AAGACCTCATTTTAAGGATGCTTGATTATGACCCAAAACCTCGAATTCACCTTATTATGCTCTGCAGCA
 CAGTTTCTTCAAGAAAACAGCTGATGAAGGTACAATAACAAGTAATAGTGTATCTACAAGCCCCGCCATG
 GAGCAGTCTCAGTCTTGGGCACCACTCCAGTACATCGTCAAGCTCAGGTGGCTCATCGGGACAAGCA
 ACAGTGGGAGAGCCCGGTCCGATCCGACGCACCAGCATCGGCACAGTGGTGGGCACTTACAGCTGCCGT
 GCAGGCCATGGACTGCGAGACACACAGTCCCCAGGTGCGTCAGCAATTTCTGCTCTCTTGGTTGGTCA
 GGCCTGAAGCTCTACACAGGTCACTGTTGAAACTCATCTGTTCAAGAAACAACCTTTTATGTAGCCC
 CTCAACAGAATGCATTGCATCATCACCATGGTAACAGTTCATCACCATCACCACCACCACCACCATCA
 CCACCACCATGGACAACAAGCCTTGGGTAACCGGACCAGGCCAAGGGTCTACAATTCCTCAACGAATAGC
 TCCTCTACCCAAGATTCTATGGAGGTTGGCCACAGTCACCACTCCATGACATCCCTGTCTTCTCAACGA
 CTTCTTCTCGACATCTTCTCTCTACTGGTAACCAAGGCAATCAGGCCTACCAGAATCGCCAGTGGC
 TGCTAATACCTTGGACTTTGGACAGAATGGAGCTATGGACGTTAATTTGACCGTCTACTCCAATCCCCGC
 CAAGAGACTGGCATAGCTGGACATCCAACATACCAATTTTCTGCTAATACAGGTCCTGCACATTACATGA
 CTGAAGGACATCTGACAATGAGGCAAGGGGCTGATAGAGAAGAGTCCCCCATGACAGGAGTTTGTGTGCA
 ACAGAGTCCTGTAGCTAGCTCG

ACGCGTACGCGGCCGCTCGAGCAGAAACTCATCTCAGAAGAGGATCTGGCAGCAAATGATATCCTGGATT
 ACAAGGATGACGACGATAAGGTTTAA

Protein Sequence: >RC213183 representing NM_130436
 Red=Cloning site Green=Tags(s)

```

MHTGGETSACKPSSVRLAPSFHAAGLQAGQMPHSHQYSDRRQPNISDQQVSALSYSDQIQQPLTNQR
RMPQTFRDPATAPLRKLSVDLIKTYKHINEVYYAKKKRRHQGGQDDSSHKKERKVVYNDGYDDDNYDYIV
KNGEKWMDRYEIDSLIGKGSFGQVVKAYDRVEQEVAIKIKNKKAFLNQAOIEVRLLELMNKHDTMCKY
YIVHLKRHFMRNHLCLVFEMLSYNLYDLLRNTNFRGVSLLNLTRKFAQQMCTALLFLATPELSIIHCCLK
PENILLCNPKRSAIKIVDFGSSCQLGQRIYQYIQSRFYRSPVLLGMPYDLAIDMWSLGCILVEMHTGEP
LFGSANEVDQMNKIVEVLGIPPAHILDQAPKARKFFEKLDPDGTWNLKTKDKGREYKPPGTRKLNHLGV
ETGGPGGRRAGESGHTVADYLKFKDLILRMLDYPKTRIQPYYALQHSFFKKTAEDEGTNTSNSVSTSPAM
EQSQSSGTTSSSSSSGSSGTSNSGRARSDPTHQHRHSGGHFTA AVQAMDCETHSPQVRQQFPAPLGSW
GTEAPTQVTVETHPVQETTFHVAPQQNALHHHHGNSSHHHHHHHHHHHHHGGQALGNRTRPRVYNSPTNS
SSTQDSMEVGHSHHSMTLSSTSTSSSTSSSTGNQGNQAYQNRVAANTLDFGQNGAMDVNL TVYSNPR
QETGIAGHPYQFSANTGPAHYMTEGHL TMRQGADREESPMTGVCVQQSPVASS
  
```

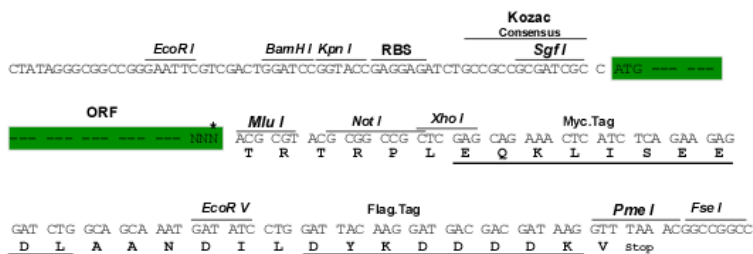
TRTRPLEQKLISEEDLAANDILDYKDDDDKV

Chromatograms: https://cdn.origene.com/chromatograms/mg2677_f01.zip

Restriction Sites: SgfI-MluI

Cloning Scheme:

Cloning sites used for ORF Shuttling:



* The last codon before the Stop codon of the ORF

ACCN: NM_130436

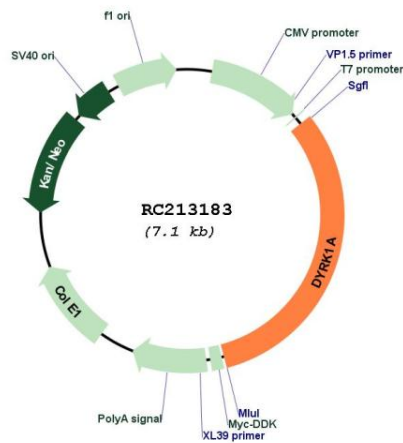
ORF Size: 2262 bp

OTI Disclaimer:	<p>Due to the inherent nature of this plasmid, standard methods to replicate additional amounts of DNA in E. coli are highly likely to result in mutations and/or rearrangements. Therefore, OriGene does not guarantee the capability to replicate this plasmid DNA. Additional amounts of DNA can be purchased from OriGene with batch-specific, full-sequence verification at a reduced cost. Please contact our customer care team at custsupport@origene.com or by calling 301.340.3188 option 3 for pricing and delivery.</p> <p>The molecular sequence of this clone aligns with the gene accession number as a point of reference only. However, individual transcript sequences of the same gene can differ through naturally occurring variations (e.g. polymorphisms), each with its own valid existence. This clone is substantially in agreement with the reference, but a complete review of all prevailing variants is recommended prior to use. More info</p>
OTI Annotation:	This clone was engineered to express the complete ORF with an expression tag. Expression varies depending on the nature of the gene.
Components:	The ORF clone is ion-exchange column purified and shipped in a 2D barcoded Matrix tube containing 10ug of transfection-ready, dried plasmid DNA (reconstitute with 100 ul of water).
Reconstitution Method:	<ol style="list-style-type: none"> 1. Centrifuge at 5,000xg for 5min. 2. Carefully open the tube and add 100ul of sterile water to dissolve the DNA. 3. Close the tube and incubate for 10 minutes at room temperature. 4. Briefly vortex the tube and then do a quick spin (less than 5000xg) to concentrate the liquid at the bottom. 5. Store the suspended plasmid at -20°C. The DNA is stable for at least one year from date of shipping when stored at -20°C.
Note:	Plasmids are not sterile. For experiments where strict sterility is required, filtration with 0.22um filter is required.
RefSeq:	NM_130436.2
RefSeq Size:	6378 bp
RefSeq ORF:	2265 bp
Locus ID:	1859
UniProt ID:	Q13627
Cytogenetics:	21q22.13
Domains:	pkinase, TyrKc, S_TKc
Protein Families:	Druggable Genome, Protein Kinase
MW:	84.4 kDa

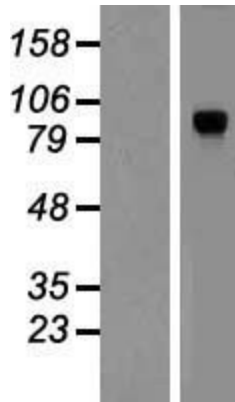
Gene Summary:

This gene encodes a member of the Dual-specificity tyrosine phosphorylation-regulated kinase (DYRK) family. This member contains a nuclear targeting signal sequence, a protein kinase domain, a leucine zipper motif, and a highly conservative 13-consecutive-histidine repeat. It catalyzes its autophosphorylation on serine/threonine and tyrosine residues. It may play a significant role in a signaling pathway regulating cell proliferation and may be involved in brain development. This gene is a homolog of *Drosophila* *mnb* (minibrain) gene and rat *Dyrk* gene. It is localized in the Down syndrome critical region of chromosome 21, and is considered to be a strong candidate gene for learning defects associated with Down syndrome. Alternative splicing of this gene generates several transcript variants differing from each other either in the 5' UTR or in the 3' coding region. These variants encode at least five different isoforms. [provided by RefSeq, Jul 2008]

Product images:



Circular map for RC213183



Western blot validation of overexpression lysate (Cat# [LY408967]) using anti-DDK antibody (Cat# [TA50011-100]). Left: Cell lysates from untransfected HEK293T cells; Right: Cell lysates from HEK293T cells transfected with RC213183 using transfection reagent MegaTran 2.0 (Cat# [TT210002]).