

Product datasheet for **RC213173**

NF2 (NM_181832) Human Tagged ORF Clone

Product data:

Product Type:	Expression Plasmids
Product Name:	NF2 (NM_181832) Human Tagged ORF Clone
Tag:	Myc-DDK
Symbol:	NF2
Synonyms:	ACN; BANF; merlin-1; SCH
Mammalian Cell Selection:	Neomycin
Vector:	pCMV6-Entry (PS100001)
E. coli Selection:	Kanamycin (25 ug/mL)



[View online »](#)

ORF Nucleotide Sequence:

>RC213173 representing NM_181832
 Red=Cloning site Blue=ORF Green=Tags(s)

TTTTGTAATACGACTCACTATAGGGCGGCCGGAATTCGTCGACTGGATCCGGTACCGAGGAGATCTGCC
 GCC**CGCATCGCC**

ATGGCCGGGGCCATCGTTCCCGCATGAGCTTCAGCTCTCTCAAGAGGAAGCAACCCAAGACGTTACCCG
 TGAGGATCGTCACCATGGACGCCGAGATGGAGTTCAATTGCGAGATGAAGTGAAAGGGAAGGACCTCTT
 TGATTTGGTGTGCCGACTCTGGGGCTCCGAGAAACCTGGTTCTTTGGACTGCAGTACACAATCAAGGAC
 ACAGTGGCTGGCTCAAATGGACAAGAAGGACTGGATCATGATGTTTCAAAGGAAGAACCAGTCACTT
 TTCACTTCTGGCCAAATTTTATCCTGAGAATGCTGAAGAGGAGCTGGTTCAGGAGATCACACAACATTT
 ATTCTTCTACAGGTAAGAAGCAGATTTTAGATGAAAAGATCTACTGCCCTCCTGAGGCTTCTGTGCTC
 CTGGCTTCTACGCCGTCAGGCCAAGTATGGTGACTACGACCCAGTGTTCACAAGCGGGGATTTTTGG
 CCCAAGAGGAATTGCTTCCAAAAAGGTAAATAATCTGTATCAGATGACTCCGGAATGTGGGAGGAGAG
 AATTACTGCTTGGTACGCAGAGCACCGAGGCCGAGCCAGGGATGAAGCTGAAATGGAATATCTGAAGATA
 GCTCAGGACCTGGAGATGTACGGTGTGAACTACTTTGCAATCCGGAATAAAAAGGCCACAGAGCTGCTGC
 TTGGAGTGGATGCCCTGGGGCTTACATTTATGACCTGAGAACAGACTGACCCCAAGATCTCCTTCCC
 GTGGAATGAAATCCGAAACATCTCGTACAGTGACAAGGAGTTTACTATTAACCCTGGATAAGAAAATT
 GATGTCTTCAAGTTAACTCCTCAAAGCTTCGTGTTAATAAGCTGATTCTCCAGCTATGTATCGGGAACC
 ATGATCTATTTATGAGGAGAAGGAAAGCCGATTCTTTGGAAGTTCAGCAGATGAAAGCCCAGGCCAGGGA
 GGAGAAGGCTAGAAAGCAGATGGAGCGGCAGCCCTCGCTCGAGAGAAGCAGATGAGGGAGGAGGCTGAA
 CGCAGGAGGATGAGTTGGAGAGGAGGCTGCTGCAGATGAAAGAAGAAGCAACAATGGCCAACGAAGCAC
 TGATCGGTCTGAGGAGACAGCTGACCTGTTGGCTGAAAAGGCCAGATCACCGAGGAGGAGGCAAAAAT
 TCTGGCCAGAAGGCCGAGAGGCTGAGCAGGAAATGCAGCGCATCAAGGCCACAGCGATTTCGCACGGAG
 GAGGAGAAGCGCCTGATGGAGCAGAAGGTGCTGGAAGCCGAGGTGCTGGCACTGAAGATGGCTGAGGAGT
 CAGAGAGGAGGGCCAAAGAGGCAGATCAGCTGAAGCAGGACCTGCAGGAAGCACGCGAGGCGAGCGAAG
 AGCCAAGCAGAAGCTCCTGGAGATTGCCACCAAGCCACGTACCCGCCATGAACCAATTCAGCACCG
 TTGCCTCCTGACATACCAAGCTTCAACCTCATTGGTGACAGCCTGTCTTTCGACTTCAAAGATACTGACA
 TGAAGCGGCTTCCATGGAGATAGAGAAAGAAAAGTGAATACATGGAAAAGAGCAAGCATCTGCAGGA
 GCAGCTCAATGAACTCAAGACAGAAATCGAGGCCCTTGAAGTGAAGAGAGGGAGACAGCTCTGGATATT
 CTGCACAATGAGAACTCCGACAGGGGTGGCAGCAGCAAGCACAATACCATTAAAAAGCCTCAAGCCCAAG
 GCAGAAGACCTATCTGCATT

ACGCGTACGCGGCCGCTCGAGCAGAAACTCATCTCAGAAGAGGATCTGGCAGCAAATGATATCCTGGATT
 ACAAGGATGACGACGATAAGGTTTAA

Protein Sequence:

>RC213173 representing NM_181832
 Red=Cloning site Green=Tags(s)

MAGAIASRMSFSSLKRKQPKFTFVRIVTMDAEMEFNCEMKWKGKDLFDLVCRTLGLRETWFFGLQYTIKD
 TVAWLKMDDKVLHDVSKKEEPVTFHFLAKFYPENAEELVQEITQHLFFLQVKKQILDEKIYCPPEASVL
 LASYAVQAKYGDYDPSVHKRGFLAQEELLPKRVINLYQMTPEMWEERITAWYAEHRGRARDEAMEYLKI
 AQDLEMYGVNYFAIRNKKGTELLLVDALGLHIYDPENRLTPKISFPWNEIRNISYSDKEFTIKPLDKKI
 DVFKFNSSKLRVNKLIQLCIGNHDLFMRRRKADSLVQQMKAQAREEKARKQMERQRLAREKQMRREEAE
 RTRDELERRLLQMKEEATMANEALMRSEETADLLAEKAQITEEEAKLLAQKAAEAQEMQRIKATAIRTE
 EEKRLMEQKVLAEVLALKMAEESERRAKEADQLKQDLQEAREARRAKQLLEIATKPTYPPMNP
 LPPDIPSFNLIIGDSL SFDKDTDMKRLSMEIEKEKVEYMEKSKHLQEQNLKTEIEALKLKERETALDI
 LHNENSDRGSSKHNTIKKPAQGRRPICI

TRTRPLEQKLISEEDLAANDILDYKDDDDKV

Chromatograms:

https://cdn.origene.com/chromatograms/mk8068_f12.zip

UniProt ID: [P35240](#)

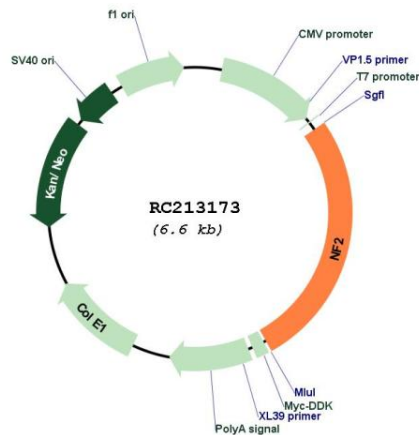
Cytogenetics: 22q12.2

Protein Families: Druggable Genome

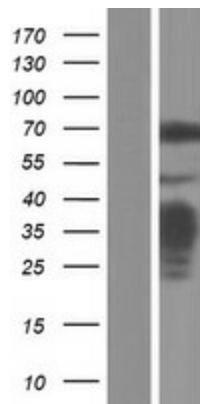
MW: 68.9 kDa

Gene Summary: This gene encodes a protein that is similar to some members of the ERM (ezrin, radixin, moesin) family of proteins that are thought to link cytoskeletal components with proteins in the cell membrane. This gene product has been shown to interact with cell-surface proteins, proteins involved in cytoskeletal dynamics and proteins involved in regulating ion transport. This gene is expressed at high levels during embryonic development; in adults, significant expression is found in Schwann cells, meningeal cells, lens and nerve. Mutations in this gene are associated with neurofibromatosis type II which is characterized by nervous system and skin tumors and ocular abnormalities. Two predominant isoforms and a number of minor isoforms are produced by alternatively spliced transcripts. [provided by RefSeq, Jul 2008]

Product images:



Circular map for RC213173



Western blot validation of overexpression lysate (Cat# [LY405607]) using anti-DDK antibody (Cat# [TA50011-100]). Left: Cell lysates from untransfected HEK293T cells; Right: Cell lysates from HEK293T cells transfected with RC213173 using transfection reagent MegaTran 2.0 (Cat# [TT210002]).