

## Product datasheet for RC213170

### Myosin (MYL4) (NM\_002476) Human Tagged ORF Clone

#### Product data:

**Product Type:** Expression Plasmids  
**Product Name:** Myosin (MYL4) (NM\_002476) Human Tagged ORF Clone  
**Tag:** Myc-DDK  
**Symbol:** Myosin  
**Synonyms:** ALC1; AMLC; GT1; PRO1957  
**Mammalian Cell Selection:** Neomycin  
**Vector:** pCMV6-Entry (PS100001)  
**E. coli Selection:** Kanamycin (25 ug/mL)  
**ORF Nucleotide Sequence:** >RC213170 ORF sequence  
 Red=Cloning site Blue=ORF Green=Tags(s)

TTTTGTAATACGACTCACTATAGGGCGGCCGGAATTCGTCGACTGGATCCGGTACCGAGGAGATCTGCC  
 GCC**CGATCGCC**

ATGGCTCCCAAGAAGCCTGAGCCTAAGAAGGAGGCGCAAGCCAGCTCCAGCTCCAGCTCCAGCCCTG  
 CACCAGCCCTGCCCGAGCTCCTGAGGCTCCCAAGGAACCTGCCTTTGACCCCAAGAGTGTAAAGATAGA  
 CTTCACTGCCGACCAGATTGAAGAGTTCAAAGAGGCTTTTCATTGTTTGACCGGACCCGACTGGAGAG  
 ATGAAGATCACCTACGGCCAGTGGGGATGACTGCGGGCCCTGGCCAGAACCCTACCAATGCCGAGG  
 TGCTGCGTGTGCTGGCAAGCCCAAGCCTGAAGAGATGAATGTCAAGATGCTGGACTTTGAGACGTTCTT  
 GCCCATCCTGCAGCACATTTCCCGCAACAAGGAGCAGGGCACCTATGAGGACTTCGTGGAGGCGCTGCGT  
 GTCTTTGACAAGGAGAGCAATGGCACGGTCATGGGTGCTGAGCTTCGGCACGTCCTTGCCACCCTGGGAG  
 AGAAGATGACTGAGGCTGAAGTGGAGCAGCTGTTAGCTGGCAAGAGGATGCCAATGGCTGCATCAATTA  
 TGAAGCCTTTGTCAAGCACATCATGTCAGGG

**ACGCGT**ACGCGGCCGCTCGAGCAGAACTCATCTCAGAAGAGGATCTGGCAGCAATGATATCCTGGATT  
 ACAAGGATGACGACGATAAGGTTTAA

**Protein Sequence:** >RC213170 protein sequence  
 Red=Cloning site Green=Tags(s)

MAPKKPEPKKEAAKPAPAPAPAPAPAPAPEAPKEPAFDPKSVKIDFTADQIEEFKEAFSLFDRPTGE  
 MKITYGQCGDVLRALGQNPTNAEVLRLVKGPKPEEMNVKMLDFETFLPILQHISRNKEQGTIEDFVEGLR  
 VFDKESNGTVMGAELRHVLA TLGEKMTAEVEQLLAGQEDANGCINYEAFVKHIMSG

**TRTRPLEQKLI**SEEDLAANDILDYKDDDDKV



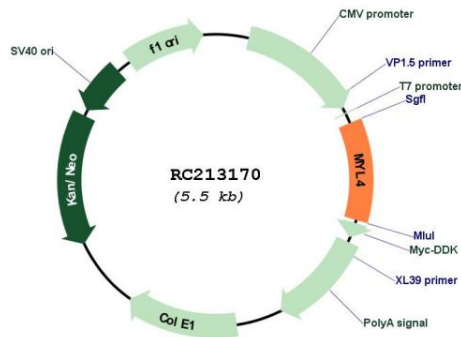
[View online »](#)



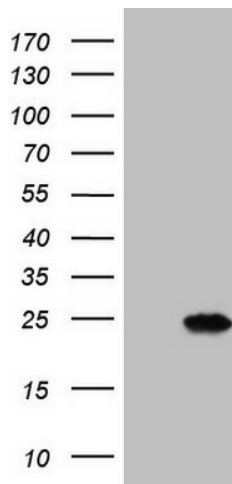
UniProt ID: [P12829](#)  
 Cytogenetics: 17q21.32  
 MW: 21.6 kDa

**Gene Summary:** Myosin is a hexameric ATPase cellular motor protein. It is composed of two myosin heavy chains, two nonphosphorylatable myosin alkali light chains, and two phosphorylatable myosin regulatory light chains. This gene encodes a myosin alkali light chain that is found in embryonic muscle and adult atria. Two alternatively spliced transcript variants encoding the same protein have been found for this gene. [provided by RefSeq, Jul 2008]

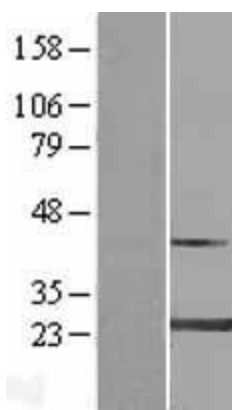
**Product images:**



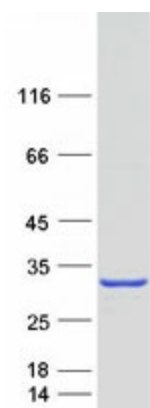
Circular map for RC213170



HEK293T cells were transfected with the pCMV6-ENTRY control (Cat# [PS100001], Left lane) or pCMV6-ENTRY MYL4 (Cat# RC213170, Right lane) cDNA for 48 hrs and lysed. Equivalent amounts of cell lysates (5 ug per lane) were separated by SDS-PAGE and immunoblotted with anti-MYL4 (Cat# [TA807579]). Positive lysates [LY419311] (100ug) and [LC419311] (20ug) can be purchased separately from OriGene.



Western blot validation of overexpression lysate (Cat# [LY419311]) using anti-DDK antibody (Cat# [TA50011-100]). Left: Cell lysates from untransfected HEK293T cells; Right: Cell lysates from HEK293T cells transfected with RC213170 using transfection reagent MegaTran 2.0 (Cat# [TT210002]).



Coomassie blue staining of purified MYL4 protein (Cat# [TP313170]). The protein was produced from HEK293T cells transfected with MYL4 cDNA clone (Cat# RC213170) using MegaTran 2.0 (Cat# [TT210002]).