

Product datasheet for **RC213169**

CLNS1A (NM_001293) Human Tagged ORF Clone

Product data:

Product Type:	Expression Plasmids
Product Name:	CLNS1A (NM_001293) Human Tagged ORF Clone
Tag:	Myc-DDK
Symbol:	CLNS1A
Synonyms:	CLCI; CLNS1B; ICln
Mammalian Cell Selection:	Neomycin
Vector:	pCMV6-Entry (PS100001)
E. coli Selection:	Kanamycin (25 ug/mL)
ORF Nucleotide Sequence:	>RC213169 ORF sequence Red=Cloning site Blue=ORF Green=Tags(s)

TTTTGTAATACGACTCACTATAGGGCGGCCGGAATTCGTCGACTGGATCCGGTACCGAGGAGATCTGCC
GCC**CGATCGCC**

ATGAGTTCCTCAAAAGTTTCCCGCCGCTGGCCAGCGGAGGGGCTCCTGCGGCAGCAGCCAGACACTG
AGGCTGTGCTGAACGGGAAGGGCTCGGCACTGGTACCCTTTACATCGCTGAGAGCCGCCTGTCTTGTT
AGATGGCTCTGGATTAGGATTCTACTGGAATACCCACCATTAGTTTACATGCATTATCCAGGGACCGA
AGTGACTGTCTAGGAGAGCATTGTATGTTATGGTGAATGCCAAATTTGAAGAAGAAATCAAAGAACCTG
TTGCTGATGAAGAAGAGGAAGACAGTGATGATGATGTTGAACCTATTACTGAATTTAGATTTGTGCCTAG
TGATAAATCAGCGTTGGAGGCAATGTTCCTGCAATGTGCGAATGCCAGGCTTGATCCAGATCCCTGAG
GATGAGGATTCAGATGACTACGATGGAGAAGAATATGATGTGGAAGCACATGAACAAGGACAGGGGGACA
TCCCTACATTTTACACCTATGAAGAAGGATTATCCCATCTAACAGCAGAAGGCCAAGCCACACTGGAGAG
ATTAGAAGGAATGCTTTCTCAGTCTGTGAGCAGCCAGTATAATATGGCTGGGGTCAGGACAGAAGATTCA
ATAAGAGATTATGAAGATGGGATGGAGGTGGATACCACACCAACAGTTGCTGGACAGTTTGGAGTGCAG
ATGTTGATCAC

ACGCGTACGCGGCCGCTCGAGCAGAACTCATCTCAGAAGAGGATCTGGCAGCAAATGATATCCTGGATT
ACAAGGATGACGACGATAAGGTTTAA



[View online »](#)

Protein Sequence: >RC213169 protein sequence
Red=Cloning site Green=Tags(s)

MSFLKSFPPPGPAEGLLRQQPDTEAVLNGKGLGTGLYIAESRLSWLDGSGLGFSLEYPTISLHALSRDR
SDCLGEHLVYVMNAKFEEESKEPVADEEEEDSDDVPEITEFRFVPSDKSALEAMFTAMCECQALHPDPE
DESDDDYDGEEYDVEAHEQGGDIPTFYTYEEGLSHLTAEGQATLERLEGMLSQSVSSQYNMAGVRTEDS
IRDYEDGMEVDTTPTVAGQFEDADVHD

TRTRPLEQKLISEEDLAANDILDYKDDDDKV

Chromatograms: https://cdn.origene.com/chromatograms/mk6562_d05.zip

Restriction Sites: SgfI-MluI

Cloning Scheme:



ACCN: NM_001293

ORF Size: 711 bp

OTI Disclaimer: The molecular sequence of this clone aligns with the gene accession number as a point of reference only. However, individual transcript sequences of the same gene can differ through naturally occurring variations (e.g. polymorphisms), each with its own valid existence. This clone is substantially in agreement with the reference, but a complete review of all prevailing variants is recommended prior to use. [More info](#)

OTI Annotation: This clone was engineered to express the complete ORF with an expression tag. Expression varies depending on the nature of the gene.

Components: The ORF clone is ion-exchange column purified and shipped in a 2D barcoded Matrix tube containing 10ug of transfection-ready, dried plasmid DNA (reconstitute with 100 ul of water).

Reconstitution Method:

1. Centrifuge at 5,000xg for 5min.
2. Carefully open the tube and add 100ul of sterile water to dissolve the DNA.
3. Close the tube and incubate for 10 minutes at room temperature.
4. Briefly vortex the tube and then do a quick spin (less than 5000xg) to concentrate the liquid at the bottom.
5. Store the suspended plasmid at -20°C. The DNA is stable for at least one year from date of shipping when stored at -20°C.

RefSeq: [NM_001293.3](#)

RefSeq Size: 1378 bp

RefSeq ORF: 714 bp

Locus ID: 1207

UniProt ID: [P54105](#)

Cytogenetics: 11q14.1

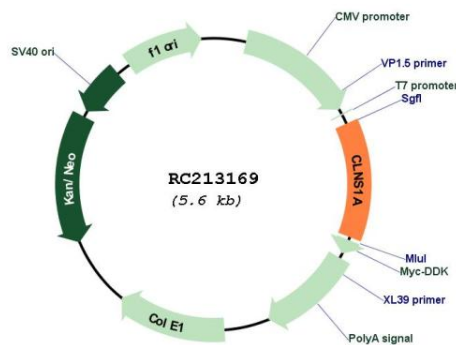
Domains: ICl_n_channel

Protein Families: Ion Channels: Other

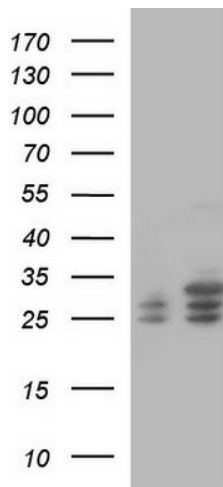
MW: 26.2 kDa

Gene Summary: This gene encodes a protein that functions in multiple regulatory pathways. The encoded protein complexes with numerous cytosolic proteins and performs diverse functions including regulation of small nuclear ribonucleoprotein biosynthesis, platelet activation and cytoskeletal organization. The protein is also found associated with the plasma membrane where it functions as a chloride current regulator. Pseudogenes of this gene are found on chromosomes 1, 4 and 6. Several transcript variants encoding different isoforms have been found for this gene. [provided by RefSeq, Jul 2015]

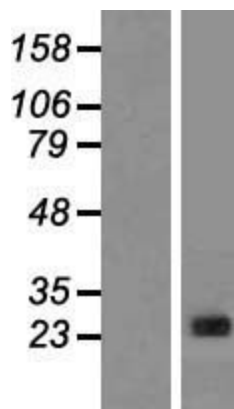
Product images:



Circular map for RC213169



HEK293T cells were transfected with the pCMV6-ENTRY control (Cat# [PS100001], Left lane) or pCMV6-ENTRY CLNS1A (Cat# RC213169, Right lane) cDNA for 48 hrs and lysed. Equivalent amounts of cell lysates (5 ug per lane) were separated by SDS-PAGE and immunoblotted with anti-CLNS1 (Cat# [TA590737]). Positive lysates [LY420002] (100ug) and [LC420002] (20ug) can be purchased separately from OriGene.



Western blot validation of overexpression lysate (Cat# [LY420002]) using anti-DDK antibody (Cat# [TA50011-100]). Left: Cell lysates from untransfected HEK293T cells; Right: Cell lysates from HEK293T cells transfected with RC213169 using transfection reagent MegaTran 2.0 (Cat# [TT210002]).