

Product datasheet for **RC213165L3V**

CD8A (NM_171827) Human Tagged ORF Clone Lentiviral Particle

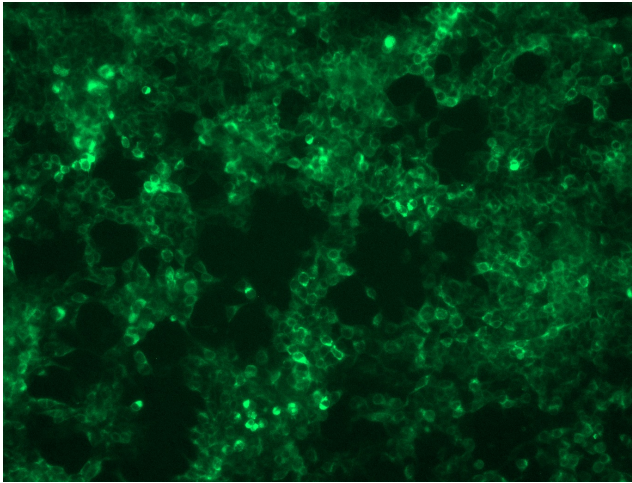
Product data:

Product Type:	Lentiviral Particles
Product Name:	CD8A (NM_171827) Human Tagged ORF Clone Lentiviral Particle
Symbol:	CD8A
Synonyms:	CD8; Leu2; p32
Mammalian Cell Selection:	Puromycin
Vector:	pLenti-C-Myc-DDK-P2A-Puro (PS100092)
Tag:	Myc-DDK
ACCN:	NM_171827
ORF Size:	594 bp
ORF Nucleotide Sequence:	The ORF insert of this clone is exactly the same as(RC213165).
OTI Disclaimer:	The molecular sequence of this clone aligns with the gene accession number as a point of reference only. However, individual transcript sequences of the same gene can differ through naturally occurring variations (e.g. polymorphisms), each with its own valid existence. This clone is substantially in agreement with the reference, but a complete review of all prevailing variants is recommended prior to use. More info
OTI Annotation:	This clone was engineered to express the complete ORF with an expression tag. Expression varies depending on the nature of the gene.
RefSeq:	NM_171827.1
RefSeq Size:	2150 bp
RefSeq ORF:	597 bp
Locus ID:	925
UniProt ID:	P01732
Cytogenetics:	2p11.2
Protein Families:	Adult stem cells, Druggable Genome, ES Cell Differentiation/IPS, Secreted Protein, Transmembrane

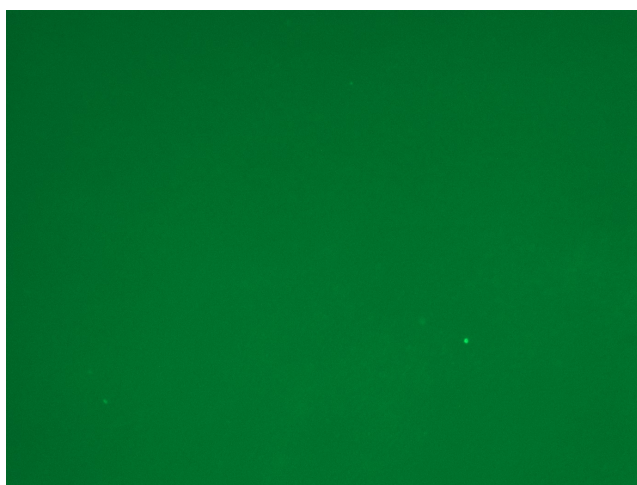


[View online »](#)

Protein Pathways:	Antigen processing and presentation, Cell adhesion molecules (CAMs), Hematopoietic cell lineage, Primary immunodeficiency, T cell receptor signaling pathway
MW:	19.4 kDa
Gene Summary:	The CD8 antigen is a cell surface glycoprotein found on most cytotoxic T lymphocytes that mediates efficient cell-cell interactions within the immune system. The CD8 antigen acts as a coreceptor with the T-cell receptor on the T lymphocyte to recognize antigens displayed by an antigen presenting cell in the context of class I MHC molecules. The coreceptor functions as either a homodimer composed of two alpha chains or as a heterodimer composed of one alpha and one beta chain. Both alpha and beta chains share significant homology to immunoglobulin variable light chains. This gene encodes the CD8 alpha chain. Multiple transcript variants encoding different isoforms have been found for this gene. The major protein isoforms of this gene differ by the presence or absence of a transmembrane domain and thus differ in being a membrane-anchored or secreted protein. [provided by RefSeq, May 2020]

Product images:

[RC213165L3] was used to prepare Lentiviral particles using [TR30037] packaging kit. HEK293T cells were transduced with RC213165L3V particle to overexpress human CD8A-Myc-DDK fusion protein.



[RC213165L3] was used to prepare Lentiviral particles using [TR30037] packaging kit. HEK293T cells were transduced with RC213165L3V particle to overexpress human CD8A-Myc-DDK fusion protein.