

Product datasheet for **RC213160**

RAB6C (NM_032144) Human Tagged ORF Clone

Product data:

Product Type:	Expression Plasmids
Product Name:	RAB6C (NM_032144) Human Tagged ORF Clone
Tag:	Myc-DDK
Symbol:	RAB6C
Synonyms:	WTH3
Mammalian Cell Selection:	Neomycin
Vector:	pCMV6-Entry (PS100001)
E. coli Selection:	Kanamycin (25 ug/mL)
ORF Nucleotide Sequence:	>RC213160 ORF sequence Red=Cloning site Blue=ORF Green=Tags(s)

TTTGTGTAATACGACTCACTATAGGGCGGCCGGAATTCGTCGACTGGATCCGGTACCGAGGAGATCTGCC
GCC**CGATCGCC**

ATGTCCGCGGGCGGAGACTTCGGAATCCGCTGAGGAAATCAAGCTGGTGTTCCTGGGGGAGCAAAGCG
TTGCAAGACATCTTTGATCACCAGATTCAGGTATGACAGTTTTGACAACACCTATCAGGCAATAATTGG
CATTGACTTTTTATCAAAAATATGTACTTGGAGGATGGAACAATCGGGCTTCGGCTGTGGGATACGGCG
GGTCAGGAACGTCTCCGTAGCCTCATTCCAGGTACATCCGTGATTCTGCTGCAGCTGTAGTAGTTTACG
ATATCACAAATGTAACTCATTCCAGCAAACACAAAGTGGATTGATGATGTCAGAACAGAAAGAGGAAG
TGATGTTATCATCAGCTAGTAGGAAATAGAACAGATCTTGCTGACAAGAGGCAAGTGTCAGTTGAGGAG
GGAGAGAGGAAAGCCAAAGGGCTGAATGTTACGTTTATTGAAACTAGGGCAAAAAGTGGATACAATGTAA
AGCAGCTCTTTCGACGTGTAGCAGCAGCTTTGCCGGAATGGAAGCACACAGGACGGAAGCAGAGAAGA
CATGAGTGACATAAACTGGAAGCCCTCAGGAGCAAACAGTCAGCGAAGGGGTTGTTCTGCTACTCT
CCCATGTCATCTTCAACCCTTCCTCAGAAGCCCCCTTACTCTTTCATTGACTGCAGTGTGAATATTGGCT
TGAACCTTTCCCTTCATTAATAACGTTTGAATTCATTCATTGCTGCCTGTCTCGTGGAGG

ACGCGTACGCGGCCGCTCGAGCAGAACTCATCTCAGAAGAGGATCTGGCAGCAAATGATATCCTGGATT
ACAAGGATGACGACGATAAGGTTTAA



[View online »](#)

Protein Sequence: >RC213160 protein sequence
 Red=Cloning site Green=Tags(s)

MSAGGDFGNPLRKFKLVFLGEQSVAKTSLITFRYDSFDNTYQAIIGIDFLSKTMYLEDGTIGRLWDTA
 GQERLRSLIPRYIRDSAAAVVVDITNVNSFQQTTKWIDVTERGSDVIITLVGNRTDLADKRQVSVEE
 GERKAKGLNVTFIETRAKTGYNVKQLFRRVAAALPGMESTQDGSREDMSDIKLEKPEQTVSEGGCSCYS
 PMSSSTLPQKPPYSFIDCSVNIIGNLFP SLITFCNSSLLPVSWR

TRTRPLEQKLISEEDLAANDILDYKDDDDKV

Chromatograms: https://cdn.origene.com/chromatograms/mk6443_b02.zip

Restriction Sites: SgfI-MluI

Cloning Scheme:



ACCN: NM_032144

ORF Size: 762 bp

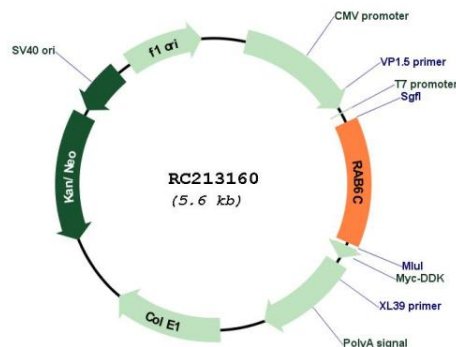
OTI Disclaimer: Due to the inherent nature of this plasmid, standard methods to replicate additional amounts of DNA in E. coli are highly likely to result in mutations and/or rearrangements. Therefore, OriGene does not guarantee the capability to replicate this plasmid DNA. Additional amounts of DNA can be purchased from OriGene with batch-specific, full-sequence verification at a reduced cost. Please contact our customer care team at custsupport@origene.com or by calling 301.340.3188 option 3 for pricing and delivery.

The molecular sequence of this clone aligns with the gene accession number as a point of reference only. However, individual transcript sequences of the same gene can differ through naturally occurring variations (e.g. polymorphisms), each with its own valid existence. This clone is substantially in agreement with the reference, but a complete review of all prevailing variants is recommended prior to use. [More info](#)

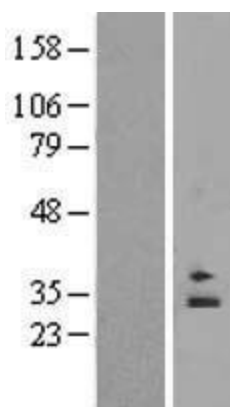
OTI Annotation: This clone was engineered to express the complete ORF with an expression tag. Expression varies depending on the nature of the gene.

Components:	The ORF clone is ion-exchange column purified and shipped in a 2D barcoded Matrix tube containing 10ug of transfection-ready, dried plasmid DNA (reconstitute with 100 ul of water).
Reconstitution Method:	<ol style="list-style-type: none"> 1. Centrifuge at 5,000xg for 5min. 2. Carefully open the tube and add 100ul of sterile water to dissolve the DNA. 3. Close the tube and incubate for 10 minutes at room temperature. 4. Briefly vortex the tube and then do a quick spin (less than 5000xg) to concentrate the liquid at the bottom. 5. Store the suspended plasmid at -20°C. The DNA is stable for at least one year from date of shipping when stored at -20°C.
Note:	Plasmids are not sterile. For experiments where strict sterility is required, filtration with 0.22um filter is required.
RefSeq:	<u>NM_032144.1, NP_115520.1</u>
RefSeq Size:	3077 bp
RefSeq ORF:	765 bp
Locus ID:	84084
UniProt ID:	<u>Q9H0N0</u>
Cytogenetics:	2q21.1
Domains:	ras, RAN, RAS, RHO, RAB
Protein Families:	Druggable Genome
MW:	28.4 kDa
Gene Summary:	May be involved in the regulation of centrosome duplication and cell cycle progression. [UniProtKB/Swiss-Prot Function]

Product images:



Circular map for RC213160



Western blot validation of overexpression lysate (Cat# [LY410337]) using anti-DDK antibody (Cat# [TA50011-100]). Left: Cell lysates from untransfected HEK293T cells; Right: Cell lysates from HEK293T cells transfected with RC213160 using transfection reagent MegaTran 2.0 (Cat# [TT210002]).