

Product datasheet for RC213159

TAF2 (NM_003184) Human Tagged ORF Clone

Product data:

Product Type:	Expression Plasmids
Product Name:	TAF2 (NM_003184) Human Tagged ORF Clone
Tag:	Myc-DDK
Symbol:	TAF2
Synonyms:	CIF150; MRT40; TAF2B; TAFII150
Mammalian Cell Selection:	Neomycin
Vector:	pCMV6-Entry (PS100001)
E. coli Selection:	Kanamycin (25 ug/mL)
ORF Nucleotide Sequence:	>RC213159 representing NM_003184 Red=Cloning site Blue=ORF Green=Tags(s)

TTTTGTAATACGACTCACTATAGGGCGGCCGGAATTCGTCGACTGGATCCGGTACCGAGGAGATCTGCC
GCC**CGATCGCC**

ATGCCGCTGACTGGTGTAGAGCCCGCCAGAATGAACAGGAAGAAAGGAGACAAGGGCTTTGAAAGCCAA
GGCCATATAAATTAACCCATCAGGTCGTCTGCATCAACAACATAAATTTCCAGAGAAAATCTGTTGTGGG
ATTTGTGGAAGTACTATATTTCCACAGTTGCAAACTGAATAGAATCAAGTTGAACAGCAAACAGTGT
AGAATATACCGAGTAAGGATCAATGATTTAGAGGCTGCTTTTATTATAATGACCCAACCTTGAAGTTT
GTCACAGTGAATCAAACAGAGAAACCTCAATTATTTTCCAATGCTTATGCAGCTGCAGTTAGTGTCTGT
GGACCCTGATGCAGGAAATGGAGAACTTTGCATTAAGGTTCCATCAGAGCTATGGAACACGTTGATGAG
TTAAAGGTCTGAAGATACACATCAATTTTTCTTTGGATCAGCCCAAAGGAGGTCTTCATTTTGTGGTAC
CCAGTGTAGAGGGAAGTATGGCAGAGAGAGGTGCTCATGTTTTCTTTGTGGGTATCAAAATTTCTACAAG
ATTTTGGTTCCCTTGTGTTGATTCATACTCTGAATTGTGTACATGGAAATTAGAATTTACAGTAGATGCT
GCAATGGTTGCTGTTTCTAATGGCGATTTGGTGGAGACAGTGTACTCATGATATGAGGAAGAAAACCTT
TCCATTATATGCTTACCATTCTACAGCAGCGTCAAATATCTCCTTGGCCATTGGACATTTGAAATACT
GGTAGATCCATACATGCATGAGGTTACTCATTTTTGTTTGCCCAACTTCTTCCATTGCTGAAACATACC
ACATCATACCTTCATGAAGTCTTTGAATTTTGAAGAAATTTACATGTCGTTACCCATCTCCTGTT
TTAAGACTGTCTTCAATTGATGAGGCTTATGTTGAAGTGGCTGCTTATGCTTCCATGAGCATTTTTAGCAC
AAATCTTTTACACAGTGCATGATTATAGATGAGACACCTTTGACTAGAAGGTGTTTAGCCAAATCCTTG
GCCAGCAGTTTTTTGGTGTTCATATCTAGAATGTCTTGGTCTGATGAATGGGTGCTGAAGGGAATTT
CAGGCTATATCTATGGACTTTGGATGAAAAAACTTTTGGTGTAAATGAGTACCGCCATTGGATTAAGA
GGAGCTAGACAAAATAGTGGCATATGAACTAAAAACTGGTGGGGTTTTACTACATCCCATATTTGGTGA
GGAAAAGAGAAGGATAATCCGGCTTCCCATCTACACTTTTCAATAAAGCATCCACATACACTGCTCTGGG
AATACTACACTATGTTTCAGTGTAAAGCCACCTTGTGATGAGATTGATTGAAAAATAGGATCAGTATGGA
ATTTATGCTACAAGTTTTCAATAAACTGCTAAGTCTGGCTAGTACTGCTTCATCTCAGAAGTTCAGTCA



[View online »](#)

CATATGTGGAGTCAGATGTTGGTTCCACATCTGGGTTTTGAAATCCATTTCAAATGTCTCTGGCAAAG
ATATTCAGCCGTTAATAAAGCAGTGGGTAGATCAGAGTGGAGTGGTAAAAATTTTATGGAAGTTTTGCATT
TAATAGAAAACGAAATGTCTTGGAACTGGAAATAAACAGGACTATACATCTCCTGGAACCTCAGAAATAC
GTGGGACCACTTAAAGTGACAGTGCAGGAGTTAGATGGATCCTTCAATCATACACTGCAAATGAAGAAA
ACAGCCTTAAACATGATATACCTGCCATTCCAAAAGTAGAAGGAATAAAAAGAAAAAATCCCAGTGT
GAATGGAGAAGAAGTTGATATGGATCTTCTGCAATGGATGCTGATTCCCCTTTGCTGTGGATAAGGATA
GACCCAGATATGTCAGTATTGAGGAAGGTAGAATTTGAGCAAGCTGATTTTATGTGGCAGTATCAGCTCC
GCTATGAGAGAGATGTTGTTGCACAGCAGGAATCCATTTTGGCTTTGGAAAAATCCCTACTCCAGCATC
TCGGCTTGCACACTCACTGATATATTAGAACAAGAGCAGTGTCTACAGAGTAAGAATGTCAGCTTCTTC
TGTCTTGCAAAGATTGCAAATCAATGGTGAGCACATGGACAGGACCACCAGCCATGAAGTCACTCTTCA
CTAGGATGTTTTGTTGTAAGTTGTCCAAACATTGTGAAAACAAACAACCTTTATGAGCTTTCAAAGCTA
TTTTCTACAGAAGACTATGCCAGTTGCAATGGCTTTATTAAGAGATGTTCAATCTTTGCTCTAAAGAA
GTCTTAACGTTTTATTTAGACTTAATCAAGTACAATGACAACAGGAAAAATAAGTTTTCAGATAACTATT
ATCGTGCAGAAATGATTGATGCCCTGGCCAACCTCTGTTACACCTGCAGTCAGTGTGAATAATGAAGTTAG
AACTTTGGATAACTTAAATCCTGATGTGGGACTCATTCTGAAGAAATCACCAGATTTTTGAATATGGAA
AAACTTCTCCGAGTTACAGGCATACCATCACTGTCAGTTGTTTGAAGGCATACGGGACTTTCAGAAGA
ACGGACATGTGCCAAGTATCCAGCTCTTTTTAAATCTTATGCTGAATATGGCCACTTTGTGGACATTAG
GATAGCAGCTTTGGAAGCAGTTGTTGATTATACTAAAAGTGACAGAAAGTTATGAAGAACTGCAATGGCTA
CTTAATATGATTGAGAAATGACCCGTACCCATGTAAGGCATAAGATTCTCAACATGTTGACTAAGAACC
CACCATTTACTAAGAACATGGAGTCTCCCTTATGCAATGAAGCCCTGGTAGACTCAACTTTGGAACTTAT
GAATTCTGGTACTTCACATGACTGGAGGTTACGGTGTGGTGTCTGGACTTGTACTTCACACTTTTTGGC
CTCAGTAGACCTTCCGTGTTACCCTTCCAGAGCTTGGGTTGGTCTTAATCTAAAGGAGAAAAAGCTG
TCTTGAATCCTACCATAATCCAGAGTCAGTAGCAGGCAACCAAGAAGCTGCAAATAATCCAAGCAGTCA
CCCACAGCTAGTTGGATTTGAGAACCCTTTTTCCAGTTCTCAAGATGAGGAGGAGATTGATATGGATACT
GTTGATGATAGCCAGGCTTCATTTCCATCATTAAACATGCTTGAAAGGCCGTCAACTCCAGGCTCT
CGAAATATCGGCCAGCTAGCTCCCGATCTGCTTAAATACCCAGCACTCAGCAGGCTGTGACAGCACACC
CACCACAAAACCCAGTGGAGTTTGAACCTTGACGGAAGGGAACAGGTAAGAACAAGCACCTTTGGAG
ATGAGTATGCATCCAGCGCAAGCGCTCCACTCTCAGTCTTTACTAAGGAATCTACAGCCTCCAAACACA
GTGACCACCATCACCACCATCACCATGAGCACAAGAAAAAGAAGAAGAAGCATAAACATAAGCACAAACA
CAAGCATAAGCATGACAGTAAAGAAAAGGACAAGGAGCCTTTCACTTTCTCCAGCCCTGCCAGTGGCAGG
TCTATTCGTTCTCCTTCCCTTTCAGAC

ACGCGTACGCGGCCGCTCGAGCAGAACTCATCTCAGAAGAGGATCTGGCAGCAAATGATATCCTGGATT
ACAAGGATGACGACGATAAGGTTTAA

Protein Sequence: >RC213159 representing NM_003184
 Red=Cloning site Green=Tags(s)

```
MPLTGVEPARMNRKKGDKGFESPRPYKLTHQVVCINNINFQRKSVVGFVELTIFPTVANLNRIKLNKQCR
RIYRVRINDLEAAFIYNDPTLEVCHSESKQRNLNYFSNAYAAAVSAVDPDAGNGELCIKVPSELWKHVDE
LKVLKIHINFSLDQPKGGLHFVVPVSEGSMAERGAHVFCGYQNSRTRFWFPCVDSYSELCTWKLEFVDA
AMVAVNGDLVETVYTHDMRKKTFHYMLTIPTAASNISLAIGPFEILVDPYMHEVTHFCPLQLPLLKHT
TSYLHEVFYEEILTCRYPYSCFKTVFIDEAYVEVAAYASMSIFSTNLLHSAMIIDETPLTRRCLAQSL
AQQFFGCFISRMSWSEWVLKGISGYIYGLWMKKTFGVNEYRHWIKEELDKIVAYELKTGGVLLHPIFGG
GKEKDNPAHLHFSIKHPHTLSWEYTMFQCKAHLVMRLIENRISMEFMLQVFNKLLSLASTASSQKFQS
HMWSQMLVSTSGFLKISINVSGKDIQPLIKQWVDQSGVVKFYGSFAFNKRKNVLELEIKQDYTSPGTQKY
VGPLKVTVQELDGSFNHTLQIEENSLKHDIPCHSKSRRNKKKIPLMNGEEVMDLSAMDADSPLLWIRI
DPDMSVLRKVEFEQADFMWQYQLRYERDVVAQQESILALEKFPTPASRLALTDILEQEQCFYRVRMSACF
CLAKIANSMVSTWTGPPAMKSLFTRMFCKSCPNIVKTNFMFSQSYFLQKTMVPVAMALLRDVHNLCPKE
VLTFFILDLIKYNDRKNKFSDNYYRAEMIDALANSVTPAVSVNNEVRTLDNLNPDVRLILEEITRFLNME
KLLPSYRHTITVSLRAIRVLQKNGHVPSPALFKSYAEYGHFVDIRIAALEAVVDYTKVDRSYEELQWL
LNMIQNDPVPYVRHKILNMLTKNPPFTKNMESPLCNEALVDQLWKL MNSGTSHDWRLRCGAVDLYFTLFG
LSRPSCLPLPELGLVNLKEKKAVALNPTIIPESVAGNQEAANNPSSHPQLVGFQNPFSSSQDEEEDMDT
VHDSQAFISHHLNMLERPSTPGLSKYRPPASSRSALIPQHSAGCDSTPTTKPQWSLELARKGTGKEQAPLE
MSMHPAASAPLSVFTKESTASKHSDHHHHHHHEHKKKKKKHKKHKKHKKHDSKEKDKPEFTFSSPASGR
SIRSPSLSD
```

TRTRPLEQKLISEEDLAANDILDYKDDDDKV

Chromatograms: https://cdn.origene.com/chromatograms/mk6285_e10.zip

Restriction Sites: SgfI-MluI

Cloning Scheme:

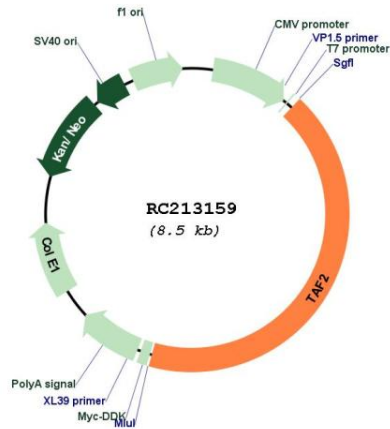


ACCN: NM_003184

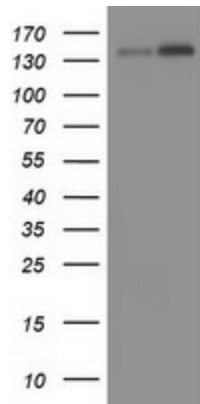
ORF Size: 3597 bp

OTI Disclaimer:	The molecular sequence of this clone aligns with the gene accession number as a point of reference only. However, individual transcript sequences of the same gene can differ through naturally occurring variations (e.g. polymorphisms), each with its own valid existence. This clone is substantially in agreement with the reference, but a complete review of all prevailing variants is recommended prior to use. More info
OTI Annotation:	This clone was engineered to express the complete ORF with an expression tag. Expression varies depending on the nature of the gene.
Components:	The ORF clone is ion-exchange column purified and shipped in a 2D barcoded Matrix tube containing 10ug of transfection-ready, dried plasmid DNA (reconstitute with 100 ul of water).
Reconstitution Method:	<ol style="list-style-type: none">1. Centrifuge at 5,000xg for 5min.2. Carefully open the tube and add 100ul of sterile water to dissolve the DNA.3. Close the tube and incubate for 10 minutes at room temperature.4. Briefly vortex the tube and then do a quick spin (less than 5000xg) to concentrate the liquid at the bottom.5. Store the suspended plasmid at -20°C. The DNA is stable for at least one year from date of shipping when stored at -20°C.
RefSeq:	NM_003184.2 , NP_003175.1
RefSeq Size:	5019 bp
RefSeq ORF:	3600 bp
Locus ID:	6873
UniProt ID:	Q6P1X5
Cytogenetics:	8q24.12
Domains:	Peptidase_M1
Protein Families:	Protease, Transcription Factors
Protein Pathways:	Basal transcription factors
MW:	136.8 kDa
Gene Summary:	Initiation of transcription by RNA polymerase II requires the activities of more than 70 polypeptides. The protein that coordinates these activities is transcription factor IID (TFIID), which binds to the core promoter to position the polymerase properly, serves as the scaffold for assembly of the remainder of the transcription complex, and acts as a channel for regulatory signals. TFIID is composed of the TATA-binding protein (TBP) and a group of evolutionarily conserved proteins known as TBP-associated factors or TAFs. TAFs may participate in basal transcription, serve as coactivators, function in promoter recognition or modify general transcription factors (GTFs) to facilitate complex assembly and transcription initiation. This gene encodes one of the larger subunits of TFIID that is stably associated with the TFIID complex. It contributes to interactions at and downstream of the transcription initiation site, interactions that help determine transcription complex response to activators. [provided by RefSeq, Jul 2008]

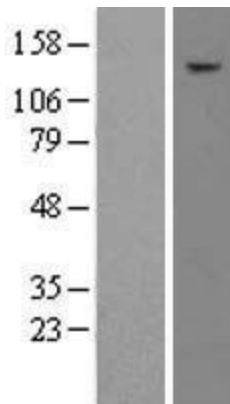
Product images:



Circular map for RC213159



HEK293T cells were transfected with the pCMV6-ENTRY control (Cat# [PS100001], Left lane) or pCMV6-ENTRY TAF2 (Cat# RC213159, Right lane) cDNA for 48 hrs and lysed. Equivalent amounts of cell lysates (5 ug per lane) were separated by SDS-PAGE and immunoblotted with anti-TAF2 (Cat# [TA504588]). Positive lysates [LY418826] (100ug) and [LC418826] (20ug) can be purchased separately from OriGene.



Western blot validation of overexpression lysate (Cat# [LY418826]) using anti-DDK antibody (Cat# [TA50011-100]). Left: Cell lysates from untransfected HEK293T cells; Right: Cell lysates from HEK293T cells transfected with RC213159 using transfection reagent MegaTran 2.0 (Cat# [TT210002]).