

Product datasheet for **RC213156**

ZNF652 (NM_014897) Human Tagged ORF Clone

Product data:

Product Type:	Expression Plasmids
Product Name:	ZNF652 (NM_014897) Human Tagged ORF Clone
Tag:	Myc-DDK
Symbol:	ZNF652
Mammalian Cell Selection:	Neomycin
Vector:	pCMV6-Entry (PS100001)
E. coli Selection:	Kanamycin (25 ug/mL)



[View online »](#)

ORF Nucleotide Sequence:

>RC213156 representing NM_014897
 Red=Cloning site Blue=ORF Green=Tags(s)

TTTTGTAATACGACTCACTATAGGGCGGCCGGAATTCGTCGACTGGATCCGGTACCGAGGAGATCTGCC
 GCC**CGGATCGCC**

ATGAGCCACACAGCCAGTTCCTTGTGAGGAGCTGGTTGAAAACGTGCTGTGCATGTAGCAGGAATGGCAC
 AAGAAGATAGCCGTCGTGGTCAAGTGCCATCTTCTTTTATCATGGTGCCAAACCAAGAACTTGACCTGTC
 CACCAAAGTGTACAAAAGGGAATCAGGAAGTCCTTATTCTGTGTTAGTGACACCAAGATGAGCAAACCG
 CATCTCCATGAAACAGAAGAAGCAGCCATATTTACGGGAGACAAGAGCAGTGTCTGACGTGCATGCTGTTA
 AGGAAGACCGGGAGAATTCTGATGACACAGAGGAGGAAGAGGAAGAAGTCTTTACAAAAGGGAGCAGAT
 CATAGTGGAGGTAACCTTAATAATCAAACATTAATGTATCTAAAGGGGAAAAGGGTGTCTCTTCTCAG
 TCCAAAGAGACTCCTGTTCTTAAGACAAGCAGTGAGGAGGAAGAGGAAGAGAGTGAAGGAAGGCCACAG
 ATGACAGCAATGACTATGGAGAGAATGAAAAGCAGAAGAAAAAGGAGAAGATAGTAGAGAAAGTCAGCGT
 TACACAAAAGGAGAACCAGGAGAGCTGCCTCTGTTGCCGAGCTACCACTCCCCTACTCCCAGAACTACA
 AGAGGTCGTAGGAAGAGTGTAGAGCCACCTAAGCGTAAGAAGCGGCCACAAAGGAGCCAAAGCACCAG
 TCCAGAAAAGCTAAGTGTGAAGAGAAAGAGACTCTGACCTGTGAGAAGTGCCCCAGGGTATTTAACTCG
 CTGGTACTGGAGAAGCAGTGAACGTTACTCATAGGCGCATGCAGATTTGTGATAAATGTGGCAAGAAG
 TTTGTCCTGGAAAGTGAGCTGTCCCTTACCAGCAAACAGACTGTGAAAAAACATTCAGTGTGTTTCTT
 GTAACAAATCGTTCAAGAAACTCTGGTCCCTTCAATGAACATATCAAGATCGTCCATGGATATGCAGAAA
 GAAATTTTCTGTGAAATTTGTGAGAAGAAATCTATACCATGGCTCATGTGCGGAAACACATGGTTGCA
 CACAAAAAGACATGCCATTTACATGCGAAACCTGTGAAAAATCATTCAAACGCAGTATGCACTCAAGG
 TGCACTCCTTGCAGCATTCTGGAGAGAAGCCCTTTAGATGCGGAAACTGTGACGAAAGGTTTCAGTACAA
 GTACCAGCTACGCTCCACATGAGCATTCAATTGGGCACAAACAGTTTCATGTGCCAGTGGTGTGGCAAG
 GATTTCAACATGAAGCAGTACTTCGACGAACACATGAAAACACACACTGGAGAGAAAACCTTTATCTGTG
 AAATCTGTGGCAAAGCTTACCAGCCGCCCAACATGAAGAGACACCGCAGAACTCACACAGGCGAGAA
 GCCCTATCCATGTGATGTGTGTGGCCAGCGTTCCGCTTCTCGAACATGCTTAAGGCCACAAAGGAGAAG
 TGCTTTCCGGTGACCAGCCCGTGAATGTGCCACCTGCTGTCCAGATCCCACTTACAACCTCCCCAGCCA
 CCCCAGTTCCTTCTGTGGTGAACACAGCCACAACCCCAACCCCTCCAATCAATATGAATCCTGTAAGCAC
 TCTTCCCCTCGGCCATCCCCACCCCTTCTCACACCTGCACATCCACCCACACCCCTCACCACCCACAC
 CACCTTCCATCCCTCCAGTCCCTCACCTCCCGCCACCTCCAGCTCTCTTAAGAGTGAGCCTTTAATC
 ATAGAGGCCAGAGTGAGGACAACCTTCTCGGGCACCTGGCAGAGAAGAAGTTCAGCACAGCATCAT

ACGCGTACGCGGCCGCTCGAGCAGAAACTCATCTCAGAAGAGGATCTGGCAGCAAATGATATCCTGGATT
 ACAAGGATGACGACGATAAGGTTTAA

Protein Sequence:

>RC213156 representing NM_014897
 Red=Cloning site Green=Tags(s)

MSHTASSCQELVENCAVHVAGMAQEDSRRGQVPSFYHGANQELDLSTKVYKRESGSPYSVLVDTKMSKP
 HLHETEEQPYFRETRAVSDVHAVKEDRENSDDTEEEEEVSYKREQIIVEVNLNNQTLNVSKEGKVSSQ
 SKETPVLKTSSEEEEESEEEATDDSN DYGENEKQKKKEKIVEKVSVTQRRTRRAASVAAATTSPTPRTT
 RGRRKSVPEPPKRKRATKEPKAPVQKAKCEEKTEL TCEKCPRVFNTRWYLEKHMNVTHRRMQICDKCGKK
 FVLESEL SLHQQTDCENIQCVSNKSFKKLWSLHEHIKIVHGYAEKKSCEICEKFFYTMHVVRKHMVA
 HTKDMPTCETCGKSFKRSMKLVHSLQHSGEKPFRCENCDEFQYKYQLRSHMSIHIHGHQFMCQWCGK
 DFNMKQYFDEHMKTHTEKPFICEICGKSFTSRPNMKRHRRTHTGEKPYPCDVCGQRF RFSNMLKAHKEK
 CFRVTSVNVPPAVQIPLTTS PATPVPSVVNTATPTPPINMNPVSTLPPRP IHPHF SHLHIHPHPPHHP
 HLP IPPVPHLPPPPALFKSEPLNHRGQSEDNFLRHLAEKNSSAQHH

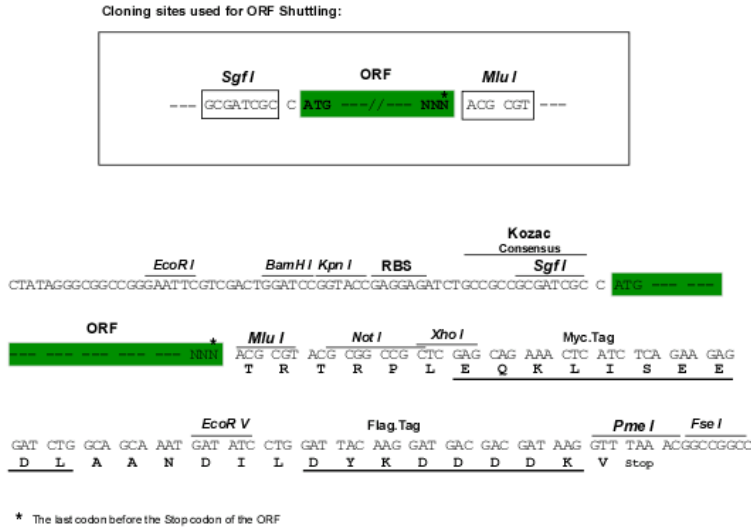
TRTRPLEQKLISEEDLAANDILDYKDDDDKV

Chromatograms:

https://cdn.origene.com/chromatograms/mg2920_c11.zip

Restriction Sites: SgfI-MluI

Cloning Scheme:



ACCN: NM_014897

ORF Size: 1818 bp

OTI Disclaimer: The molecular sequence of this clone aligns with the gene accession number as a point of reference only. However, individual transcript sequences of the same gene can differ through naturally occurring variations (e.g. polymorphisms), each with its own valid existence. This clone is substantially in agreement with the reference, but a complete review of all prevailing variants is recommended prior to use. [More info](#)

OTI Annotation: This clone was engineered to express the complete ORF with an expression tag. Expression varies depending on the nature of the gene.

Components: The ORF clone is ion-exchange column purified and shipped in a 2D barcoded Matrix tube containing 10ug of transfection-ready, dried plasmid DNA (reconstitute with 100 ul of water).

- Reconstitution Method:
1. Centrifuge at 5,000xg for 5min.
 2. Carefully open the tube and add 100ul of sterile water to dissolve the DNA.
 3. Close the tube and incubate for 10 minutes at room temperature.
 4. Briefly vortex the tube and then do a quick spin (less than 5000xg) to concentrate the liquid at the bottom.
 5. Store the suspended plasmid at -20°C. The DNA is stable for at least one year from date of shipping when stored at -20°C.

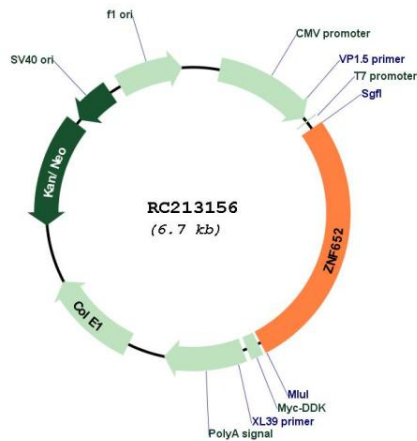
RefSeq: [NM_014897.2](#)

RefSeq Size: 5428 bp

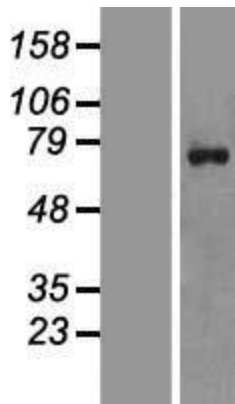
RefSeq ORF: 1821 bp

Locus ID: 22834

UniProt ID: [Q9Y2D9](#)
Cytogenetics: 17q21.32-q21.33
Domains: zf-C2H2
MW: 69.6 kDa
Gene Summary: Functions as a transcriptional repressor.[UniProtKB/Swiss-Prot Function]

Product images:


Circular map for RC213156



Western blot validation of overexpression lysate (Cat# [LY428846]) using anti-DDK antibody (Cat# [TA50011-100]). Left: Cell lysates from untransfected HEK293T cells; Right: Cell lysates from HEK293T cells transfected with [RC227741] using transfection reagent MegaTran 2.0 (Cat# [TT210002]).