

Product datasheet for RC213154

ATP binding cassette sub family A member 3 (ABCA3) (NM_001089) Human Tagged ORF Clone

Product data:

Product Type:	Expression Plasmids
Product Name:	ATP binding cassette sub family A member 3 (ABCA3) (NM_001089) Human Tagged ORF Clone
Tag:	Myc-DDK
Symbol:	ATP binding cassette sub family A member 3
Synonyms:	ABC-C; ABC3; EST111653; LBM180; SMDP3
Mammalian Cell Selection:	Neomycin
Vector:	pCMV6-Entry (PS100001)
E. coli Selection:	Kanamycin (25 ug/mL)
ORF Nucleotide Sequence:	>RC213154 representing NM_001089 Red=Cloning site Blue=ORF Green=Tags(s)

TTTTGTAATACGACTCACTATAGGGCGGCCGGGAATTCGTCGACTGGATCCGGTACCGAGGAGATCTGCC
GCCCGGATCGCC

ATGGCTGTGCTCAGGCAGCTGGCGCTCCTCCTCTGGAAGAAGTACACCCTGCAGAAGCGGAAGGTCCTGG
TGACGGTCTGGAAGTCTTCTGCCATTGCTGTTTTCTGGGATCCTCATCTGGCTCCGCTTGAAGATTCA
GTCGGAAAATGTGCCAACGCCACCATCTACCCGGCCAGTCCATCCAGGAGCTGCCTCTGTTCTTCAAC
TTCCCTCCGCCAGGAGACCTGGGAGCTTGCCTACATCCCTTCTCACAGTGACGCTGCCAAGACCGTCA
CTGAGACAGTGCCGAGGGCACTTGTGATCAACATGCGAGTGCGCGGCTTTCCCTCCGAGAAGGACTTTGA
GGACTACATTAGGTACGACAAGTCTGCTCCAGCGTGCTGGCCGCGTGGTCTTCGAGCACCCCTTCAAC
CACAGCAAGGAGCCCTGCCGCTGGCGGTGAAATATCACCTACGGTTCAGTTACACACGGAGAAATTACA
TGTGGACCCAAACAGGCTCCTTTTTCTGAAAGAGACAGAAGGCTGGCACACTACTTCCCTTTTCCCGCT
TTTCCCAAACCCAGGACCAAGGAACTACATCCCTGATGGCGGAGAACCTGGGTACATCCGGGAAGGC
TTCTGGCCGTGCAGCATGCTGTGGACCGGCCATCATGGAGTACCATGCCGATGCCGCCACACGCCAGC
TGTTCCAGAGACTGACGGTGACCATCAAGAGGTTCCCGTACCCGCGTTCATCGCAGACCCCTTCTCGT
GGCCATCCAGTACCAGCTGCCCTGCTGCTGCTCAGCTTACCTACCCGCGCTCACCATTTGCCCGT
GCTGTCGTGCAGGAGAAGGAAAGGAGGCTGAAGGAGTACATGCGCATGATGGGGCTCAGCAGCTGGCTGC
ACTGGAGTGCCTGGTTCCTTGTCTTCTCCTCCTCATCGCCGCTCCTTTCATGACCCTGCTCTT
CTGTGTCAAGGTGAAGCCAAATGTAGCCGTGCTGTCCCGCAGCGACCCCTCCCTGGTGCTCGCCTTCTG
CTGTGCTTCGCCATCTCTACCATCTCCTCAGCTTTCATGGTCCAGCACCTTCTTCAGCAAAGCCAACATGG
CAGCAGCCTTCGGAGGCTTCTTACTTCTTACCTACATCCCTACTTCTTCTGTTGGCCCTCGGTACAA
CTGGATGACTCTGAGCCAGAAGCTCTGCTCCTGCCTCCTGTCTAATGTGCCATGGCAATGGGAGCCAG
CTCATTGGGAAATTTAGGCGAAAGGCATGGGCATCCAGTGGCGAGACCTCCTGAGTCCCGTCAACGTGG
ACGACGACTTCTGCTTCGGGCAGGTGCTGGGATGCTGCTGCTGGACTCTGTGCTATGGCCTGGTGAC



[View online »](#)

CTGGTACATGGAGGCCGTCTCCAGGGCAGTTCGGCGTGCCTCAGCCCTGGTACTTCTTCATCATGCC
 TCCTATTGGTGTGGGAAGCCAAGGGCGGTTGCAGGGAAGGAGGAAGAAGACAGTGACCCCGAGAAAGCAC
 TCAGAAACGAGTACTTTGAAGCCGAGCCAGAGGACCTGGTGGCGGGGATCAAGATCAAGCACCTGTCCAA
 GGTGTTCAAGGTGGGAAATAAGGACAGGGCGGCCGTGAGAGACCTGAACCTCAACCTGTACGAGGGACAG
 ATCACCGTCTGCTGGGCCACAACGGTCCCGGGAAGACCACCACCTCTCCATGCTCACAGGTCTCTTTC
 CCCCCACAGTGGACGGGCATACATCAGCGGGTATGAAATTTCCAGGACATGGTTCAGATCCGGAAGAG
 CCTGGCCCTGTGCCCGCAGCAGACATCCTGTTTGACAACCTTGACAGTGCAGAGCACCTTTATTTCTAC
 GCCCAGCTGAAGGGCCTGTCACGTGAGAAGTGCCCTGAAGAAAGTCAAGCAGATGCTGCACATCATCGGCC
 TGGAGGACAAGTGGAACTCACGGAGCCGCTTCTGAGCGGGGCATGAGGCGCAAGCTCTCCATCGGCAT
 CGCCCTCATCGCAGGCTCCAAGGTGCTGATACTGGACGAGCCACCTCGGGCATGGACGCCATCTCCAGG
 AGGGCCATCTGGGATCTTCTCAGCGGCAGAAAAGTGACCGCACCATCGTGTGACCACCCACTTCATGG
 ACGAGGCTGACCTGCTGGGAGACCCGCATCGCCATCATGGCCAAGGGGGAGCTGCAGTGTGCGGGTCTC
 GCTGTTCTCAAGCAGAAATACGGTGCCGGCTATCACATGACGCTGGTGAAGGAGCCGACTGCAACCCG
 GAAGACATCTCCAGCTGGTCCACCACCAGTGCCAACGCCACGCTGGAGAGCAGCGCTGGGGCCGAGC
 TGTCTTTCATCCTTCCAGAGAGACGACGACAGGTTTGAAGGTCTCTTTGCTAAACTGGAGAAGAAGCA
 GAAAGAGCTGGGATTGCCAGCTTTGGGGCATCCATCACCACCATGGAGGAAGTCTTCTTCGGGTCCGG
 AAGCTGGTGGACAGCAGTATGGACATCCAGGCCATCCAGCTCCCTGCCCTGCAGTACCAGCACGAGAGGC
 GCGCCAGCGACTGGGCTGTGGACAGCAACCTCTGTGGGGCCATGGACCCCTCCGACGGCATTGGAGCCCT
 CATCGAGGAGGAGCGCACCGCTGTCAAGCTCAACACTGGGCTCGCCCTGCACTGCCAGCAATTCTGGGCC
 ATGTTCTGAAGAAGGCCGCATACAGCTGGCGGAGTGGAAAATGGTGGCGGCACAGGTCTGGTGCCTC
 TGACCTGCGTACCCTGGCCCTCCTGGCCATCACTACTCCTCGGAGCTTTCGACGACCCCATGCTGAG
 GCTGACCTGGGGAGTACGGCAGAACCGTCTGTCCTTCTCAGTTCGGGGACCTCCGAGGTCGGTCCAG
 CAGCTGTCAGAGCATCTGAAAGACGCATGCAGGCTGAGGGACAGGAGCCCGGAGGTGCTCGGTGACC
 TGGAGGATTTCTGATCTTCAGGGCTTCTGTGGAGGGGGCGGCTTAAATGAGCGGTGCCTTGTGGCAGC
 GTCCTTACAGAGTGTGGGAGAGCGCAGGTCGTAACGCCTTGTCAACAACAGGCGTACCCTCTCCA
 GCCACTGCCCTGGCCGTCGTGGACAACCTTCTGTTCAAGCTGCTGTGCGGGCCTCACGCCTCCATTGTGG
 TCTCCAATTCCCCAGCCCCGAGCGCCCTGCAGGCTGCCAAGGACCAGTTAACGAGGGCCGGAAGGG
 ATTCGACATTGCCCTCAACCTGCTTTCGCCATGGCATTCTTGGCCAGCACGTTCTCCATCTGGCGGT
 AGCGAGAGGGCCGTCAGGCCAAGCATGTGCAGTTTGTGAGTGGAGTCCACGTGGCCAGTTTCTGGCTCT
 CTGCTCTGCTGTGGACCTCATCTCTTCTCATCCCCAGTCTGCTGCTGCTGGTGGTGTAAAGCCCTT
 CGAGTGGTGCCTTACGCGGGACGGCCATGGCTGACACCCTGCTGCTGCTCTGCTCTACGGCTGG
 GCCATCATCCCCCTCATGTACCTGATGAACTTCTTCTTGGGGCGGGCACTGCCTACACGAGGCTGA
 CCATCTTCAACATCCTGTGAGGCATCGCCACCTTCTGATGGTCAACATCATGCGCATCCAGCTGTAAA
 ACTGGAAGAACTTTCAAACCCCTGGATCACGTGTTCTGGTGTGCCCAACCACTGTCTGGGGATGGCA
 GTCAGCAGTTTCTACGAGAACTACGAGACGCGGAGGACTGCACCTCCTCCGAGGTGCGCCGCCACTACT
 GCAAGAAATATAACATCCAGTACCAGGAGAACTTCTATGCCTGGAGCGCCCCGGGGTGGCCCGTTTGT
 GGCCCTCATGGCCGCTCAGGGTGCCTACCTCATCTGCTCTTCTCATCGAGACCACTGCTTCAG
 AGACTAGGGGCATCCTTGCCTCCGGAGGAGCGGACACTGACAGAATTATACACCCGATGCTGCTG
 TGCTTCTGAGGACCAAGATGTAGCGGACGAGAGGACCCGCATCCTGGCCCCAGCCCCGACTCCCTGCT
 CCACACACTCTGATTATCAAGGAGCTTCCAAGGTGTACGAGCAGCGGGTGCCTCCTGGCCGTGGAC
 AGGCTCTCCCTCGCGGTGCAAAAAGGGAGTGCTTCGGCCTGCTGGGCTCAATGGAGCCGGAAGACCA
 CGACTTTCAAATGCTGACCGGGGAGGAGGCCTCACTTCTGGGGATGCCTTTGTGCGGGGTACAGAAAT
 CAGCTCTGATGTGGAAGGTGCGGCAGCGGATCGGCTACTGCCCGCAGTTTGTGCTTGTGACCCAC
 ATGACAGGCGGGAGATGCTGGTGTGACGCTCGGCTCCGGGGCATCCCTGAGCGCCACATCGGGGCT
 GCGTGGAGAACAATCTGCGGGGCTGCTGCTGGAGCCACATGCCAACAAGCTGGTACGAGCTACAGTGG
 TGGTAACAAGCGAAGCTGAGCACCGGCATCGCCCTGATCGGAGAGCCTGCTGTCATCTTCTGGACGAG
 CCGTCCACTGGCATGGACCCCGTGGCCCGGCGCTGCTTTGGGACACCGTGGCACGAGCCGAGAGTCTG
 GCAAGGCCATCATCATACCTCCACAGCATGGAGGAGTGTGAGGCCCTGTGCACCCGGCTGGCCATCAT
 GGTGACGGGGCAGTTCAAGTGCCTGGGACGCCCCAGCACCTCAAGAGCAAGTTCCGGCAGCGGCTACTCC
 CTGCGGGCCAAGGTGACAGTGAAGGGCAACAGGAGGCGCTGGAGGAGTTCAAGGCCCTCGTGGACCTGA
 CCTTTCAGGCAGCGTCTGGAAGATGAGCACCAAGGCATGGTCCATTACCACCTGCCGGCCGTGACCT
 CAGCTGGGCGAAGGTTTTCGGTATTCTGGAGAAAGCCAAGGAAAAGTACGGCGTGGACGACTACTCCGTG

AGCCAGATCTCGCTGGAACAGGTCTTCCTGAGCTTCGCCACCTGCAGCCGCCACCCGAGAGGAGGGG
GA

ACGCGTACGCGGCCGCTCGAGCAGAACTCATCTCAGAAGAGGATCTGGCAGCAATGATATCCTGGATT
ACAAGGATGACGACGATAAGGTTAA

Protein Sequence:

>RC213154 representing NM_001089
Red=Cloning site Green=Tags(s)

MAVLRQLALLLWKNYTLQKRKVLVTVLELFLPLLFSGIL IWLRLKIQSENVPNATIYPGQSIQELPLFFT
FPPPGDTWELAYIPSHSDAAKTVTETVRRALVINMRVGRFPSEKDFEDYIRYDNCSSSVLAAVVFHEHPFN
HSKEPLPLAVKYHLRFSYTRRNYMWTQTGSFLLKETEGWHTTSLFPLFPNPGPREPTSPDGGEGPYIREG
FLAVQHAVDRAIMEYHADAATRQLFQRLVTIKRFPYPPFIADPFLVAIQYQLPLLLLLSFTYTALTIAR
AVVQEKERRLKEYMRMGLSSWLHWSAWFLLFLLIAASFMTLLFCVKVKNVAVLSRSDPSLVLAFL
LCFAISTISFSFMVSTFFSKANMAAAFGGFLYFFTYIPYFFVAPRYNWMTLSQLCSCLLSNVAMAMGAQ
LIGKFEAKGMIQWRDLLSPVNVDDDFCFGQVLGMLLLDSVL YGLVTWYMEAVFPGQFGVPQWYFFIMP
SYWCGKPRAVAGKEEEDSDPEKALRNEYFEAEPEDLVAGIKIKHL SKVFRVGNKDRAAVRDLNLNLYEGQ
ITVLLGHNGAGKTTLSMLTGLFPPTSGRAYISGYEISQDMVQIRKSLGLCPQHDILFDNLTVAEHLFYF
AQLKGLSRQKCPPEVKQMLHIIGLEDKWNRSRFLSGGMRRKLSIGIALIAGSKVLILDEPTSGMDAISR
RAIWDLLQRQKSDRTIVLTTHFMDADLLGDRIAIAKAGELQCCGSSLFLKQKYGAGYHMTLVKEPHCNP
EDISQLVHHHVPNATLESSAGAELSFILPRESTRHFEGFLAKLEKKQKELGIASFASITMEEVFLRVG
KLVDSMIDIQAIQLPALQYQHERRASDWA VDSNL CGAMDPSDGIGALIEEERTAVKLNTGLALHCQQFWA
MFLKKAAYSWREWKMVAAQVLVPLTCVTLALLAINYSSELFDDPMLRLTLGEYGRTVVPFSVPGTSQLGQ
QLSEHLKDALQAEGQEPREVLGDLEEFIFRASVEGGGFNERCLVAASFVDVGERTVVNALFNNQAYHSP
ATALAVVDNLLFKLLCGPHASIVVSNFPQRSALQAAKQDFNEGRKGFDIALNLLFAMAFLASTFSILAV
SERAVQAKHVQFVSGVHVASFWSALLWDLISFLIPSLLLLVVFKAFDVRAFTRDGHMADTLLLLLYGW
AIIPLMYLMNFFFLLGAATAYTRLTIFNILSGIATFLMVTIMRIPAVKLEELSKTLDHVFLVLPNHCLGMA
VSSFYENYETRRYCTSSSEVAHYCKKYNIQYQENFYAWSAPGVGRFVASMAASGCAYLILLFLIETNLLQ
RLRGILCALRRRRTLTELYTRMPVLPEDQDVADERTRILAPSPDLSLHTPLIIKELSKVYEQRVPLAVD
RLSLAVQKGEFCGLLGFNGAGKTTTFKMLTGEESLTSGDVFGGHRISSDVGVKVRQIRIGYCPQFDALLDH
MTGREMLVMYARLRGIPERHIGACVENTLRGLLLEPHANKLVRTYSGGNKRKLSTGIALIGEPAVIFLDE
PSTGMDPVARRLLWDTVARARESGKAIITSHSMEECEALCTRLAIMVQGOQKCLGSPQHLKSKFGSGYS
LRAKVQSEGQAELEEFKAFVDLTFPGSVLEDEHQGMVHYHLPGRDLSWAKVFGILEKAKEKYGVDDYSV
SQISLEQVFLSFAHLQPPTAEGR

TRTRPLEQKLI SEEDLAANDILDYKDDDDKV

Chromatograms:

https://cdn.origene.com/chromatograms/mk8005_f11.zip

Restriction Sites:

SgfI-MluI

Cloning Scheme:



ACCN: NM_001089

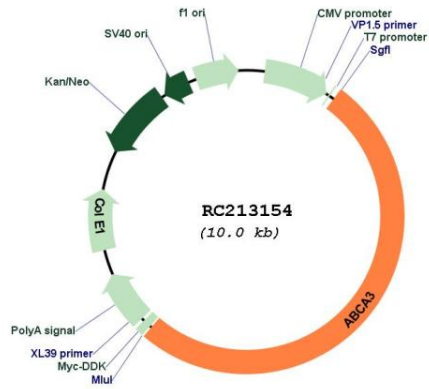
ORF Size: 5112 bp

OTI Disclaimer: Due to the inherent nature of this plasmid, standard methods to replicate additional amounts of DNA in E. coli are highly likely to result in mutations and/or rearrangements. Therefore, OriGene does not guarantee the capability to replicate this plasmid DNA. Additional amounts of DNA can be purchased from OriGene with batch-specific, full-sequence verification at a reduced cost. Please contact our customer care team at custsupport@origene.com or by calling 301.340.3188 option 3 for pricing and delivery.

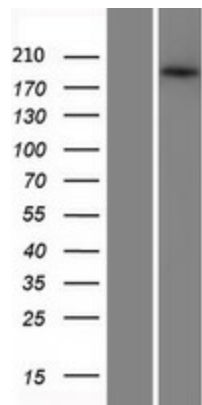
The molecular sequence of this clone aligns with the gene accession number as a point of reference only. However, individual transcript sequences of the same gene can differ through naturally occurring variations (e.g. polymorphisms), each with its own valid existence. This clone is substantially in agreement with the reference, but a complete review of all prevailing variants is recommended prior to use. [More info](#)

OTI Annotation:	This clone was engineered to express the complete ORF with an expression tag. Expression varies depending on the nature of the gene.
Components:	The ORF clone is ion-exchange column purified and shipped in a 2D barcoded Matrix tube containing 10ug of transfection-ready, dried plasmid DNA (reconstitute with 100 ul of water).
Reconstitution Method:	<ol style="list-style-type: none">1. Centrifuge at 5,000xg for 5min.2. Carefully open the tube and add 100ul of sterile water to dissolve the DNA.3. Close the tube and incubate for 10 minutes at room temperature.4. Briefly vortex the tube and then do a quick spin (less than 5000xg) to concentrate the liquid at the bottom.5. Store the suspended plasmid at -20°C. The DNA is stable for at least one year from date of shipping when stored at -20°C.
RefSeq:	NM_001089.2 , NP_001080.2
RefSeq Size:	6491 bp
RefSeq ORF:	5115 bp
Locus ID:	21
UniProt ID:	Q99758
Cytogenetics:	16p13.3
Protein Families:	Druggable Genome, Transmembrane
Protein Pathways:	ABC transporters
MW:	191.2 kDa
Gene Summary:	The membrane-associated protein encoded by this gene is a member of the superfamily of ATP-binding cassette (ABC) transporters. ABC proteins transport various molecules across extra- and intracellular membranes. ABC genes are divided into seven distinct subfamilies (ABC1, MDR/TAP, MRP, ALD, OABP, GCN20, White). This protein is a member of the ABC1 subfamily. Members of the ABC1 subfamily comprise the only major ABC subfamily found exclusively in multicellular eukaryotes. The full transporter encoded by this gene may be involved in development of resistance to xenobiotics and engulfment during programmed cell death. [provided by RefSeq, Jul 2008]

Product images:



Circular map for RC213154



Western blot validation of overexpression lysate (Cat# [LY421334]) using anti-DDK antibody (Cat# [TA50011-100]). Left: Cell lysates from untransfected HEK293T cells; Right: Cell lysates from HEK293T cells transfected with RC213154 using transfection reagent MegaTran 2.0 (Cat# [TT210002]).