

## Product datasheet for RC213153

### GPR20 (NM\_005293) Human Tagged ORF Clone

#### Product data:

Product Type:	Expression Plasmids
Product Name:	GPR20 (NM_005293) Human Tagged ORF Clone
Tag:	Myc-DDK
Symbol:	GPR20
Mammalian Cell Selection:	Neomycin
Vector:	pCMV6-Entry (PS100001)
E. coli Selection:	Kanamycin (25 ug/mL)
ORF Nucleotide Sequence:	>RC213153 representing NM_005293 Red=Cloning site Blue=ORF Green=Tags(s)

TTTTGTAATACGACTCACTATAGGGCGGCCGGAATTCGTCGACTGGATCCGGTACCGAGGAGATCTGCC  
GCC**CGATCGCC**

ATGCCCTCTGTGTCTCCAGCGGGGCCCTCGGCCGGGGCAGTCCCCAATGCCACCGCAGTGACAACAGTGC  
GGACCAATGCCAGCGGGCTGGAGGTGCCCTGTTCCACCTGTTTGCCCGGCTGGACGAGGAGCTGCATGG  
CACCTTCCCAGGCCTGTGGCTGGCGTGATGGCGGTGCACGGAGCCATCTTCTGGCAGGGCTGGTGCTC  
AACGGCTGGCGCTGTACGTCTTCTGCTGCCGACCCGGGCCAAGACACCCTCAGTCATCTACACCATCA  
ACCTGGTGGTGACCGATCTACTGGTAGGGCTGTCCTGCCACCGCTTCGCTGTGACTACGGCGCCAG  
GGCTGCCTGCGCTGTGCCTTCCCGCACGTCCTCGGTTACTTCCTCAACATGCACTGCTCCATCCTCTTC  
CTCACCTGCATCTGCGTGGACCGCTACCTGGCCATCGTGCGGCCTGAAGGCTCCCGCCGCTGCCGCCAGC  
CTGCCTGTGCCAGGGCCGTGTGCCTTCTGTGGCTGGCCGCCGGTGCCGTACCCTGTGCGGTGCTGGG  
CGTGACAGGCAGCCGGCCCTGCTGCCGTGCTTTGCGCTGACTGTCTGGAGTTCCTGCTGCCTCTGCTG  
GTCATCAGCGTGTACCGGCCATCATGTGTGCACTGTGCGGGCCGGTCTGCTCCGCCAGGGTCCGC  
AGCGCCGCTGCCGGCCATGCAGCTCCTGCTCACGGTGTCTCATCTTTCTGCTGCTTACGCCCTT  
CCAGCCCGCAAGTGGCCGTGGCGCTGTGGCCGACATGCCACACCACAGAGCCTCGTGGTCTACCAC  
GTGGCCGTGACCCTCAGCAGCCTCAACAGCTGCATGGACCCCATGTCTACTGCTTGCCTACCAGTGGCT  
TCCAGGCCACCGTCCGAGCCTTTCGGCCAGCACGGAGAGCGTGAGCCAGCAGCGGTGACGTGGTCCAG  
CATGCACAGGAGCTCCAAGGGCTCAGGCCGTATCACATCCTCAGTGCCGGCCCTCACGCCCTCACCCAG  
GCCTGGCTAATGGGCCCGAGGCT

**ACGCGT**ACGCGGCCGCTCGAGCAGAACTCATCTCAGAAGAGGATCTGGCAGCAAATGATATCCTGGATT  
ACAAGGATGACGACGATAAGGTTTAA



[View online »](#)

**Protein Sequence:** >RC213153 representing NM\_005293  
Red=Cloning site Green=Tags(s)

MPSVSPAGPSAGAVPNATAVTTVRTNASGLEVPLFHLFARLDEELHGTFFGLWLALMAVHGAIFLAGLVL  
 NGLALYVFCRTRAKTPSVIYITINLVVTDLLVGLSLPTRFAVYYGARGCLRCAFPHVLGYFLNMHCSILF  
 LTCICVDRYLAIVRPEGSRRRCQPACARAVCAFVWLAAGAVTLVGLVGTGSRPCCRVFALTVLEFLLPLL  
 VISVFTGRIMCALSRLGLLRQGRQRRVRAMQLLLTVLIIFLVCFPFHARQVAVALWPDMPHHTSLVVYH  
 VAVTLSSLNSCMDPIVYCFVTSGFQATVRGLFGQHGEREPSSGDVVMHRSSKSGSRHHILSAGPHALTQ  
 ALANGPEA

TRTRPLEQKLISEEDLAANDILDYKDDDDKV

**Chromatograms:** [https://cdn.origene.com/chromatograms/mk6108\\_h02.zip](https://cdn.origene.com/chromatograms/mk6108_h02.zip)

**Restriction Sites:** SgfI-MluI

**Cloning Scheme:**

Cloning sites used for ORF Shuttling:



\* The last codon before the Stop codon of the ORF

**ACCN:** NM\_005293

**ORF Size:** 1074 bp

**OTI Disclaimer:** The molecular sequence of this clone aligns with the gene accession number as a point of reference only. However, individual transcript sequences of the same gene can differ through naturally occurring variations (e.g. polymorphisms), each with its own valid existence. This clone is substantially in agreement with the reference, but a complete review of all prevailing variants is recommended prior to use. [More info](#)

**OTI Annotation:** This clone was engineered to express the complete ORF with an expression tag. Expression varies depending on the nature of the gene.

**Components:** The ORF clone is ion-exchange column purified and shipped in a 2D barcoded Matrix tube containing 10ug of transfection-ready, dried plasmid DNA (reconstitute with 100 ul of water).

**Reconstitution Method:**

1. Centrifuge at 5,000xg for 5min.
2. Carefully open the tube and add 100ul of sterile water to dissolve the DNA.
3. Close the tube and incubate for 10 minutes at room temperature.
4. Briefly vortex the tube and then do a quick spin (less than 5000xg) to concentrate the liquid at the bottom.
5. Store the suspended plasmid at -20°C. The DNA is stable for at least one year from date of shipping when stored at -20°C.

**RefSeq:** [NM\\_005293.3](#)

**RefSeq Size:** 1077 bp

**RefSeq ORF:** 1077 bp

**Locus ID:** 2843

**UniProt ID:** [Q99678](#)

**Cytogenetics:** 8q24.3

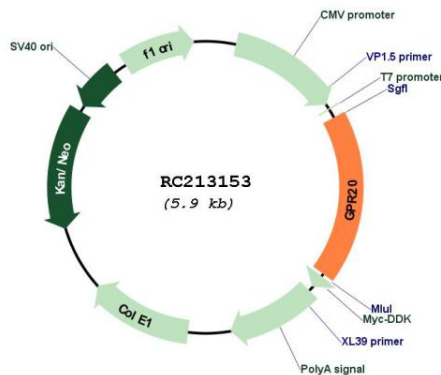
**Domains:** 7tm\_1

**Protein Families:** Druggable Genome, GPCR, Transmembrane

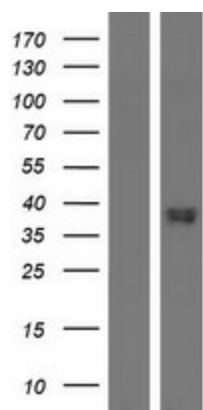
**MW:** 38.5 kDa

**Gene Summary:** Orphan receptor with constitutive G(i) signaling activity that activate cyclic AMP. [UniProtKB/Swiss-Prot Function]

### Product images:



Circular map for RC213153



Western blot validation of overexpression lysate (Cat# [LY401631]) using anti-DDK antibody (Cat# [TA50011-100]). Left: Cell lysates from untransfected HEK293T cells; Right: Cell lysates from HEK293T cells transfected with RC213153 using transfection reagent MegaTran 2.0 (Cat# [TT210002]).