

## Product datasheet for RC213146

### SULT1C4 (NM\_006588) Human Tagged ORF Clone

#### Product data:

Product Type:	Expression Plasmids
Product Name:	SULT1C4 (NM_006588) Human Tagged ORF Clone
Tag:	Myc-DDK
Symbol:	SULT1C4
Synonyms:	SULT1C; SULT1C2
Mammalian Cell Selection:	Neomycin
Vector:	pCMV6-Entry (PS100001)
E. coli Selection:	Kanamycin (25 ug/mL)
ORF Nucleotide Sequence:	>RC213146 representing NM_006588 Red=Cloning site Blue=ORF Green=Tags(s)

TTTGTAAATACGACTCACTATAGGGCGGCCGGAATTCGTCGACTGGATCCGGTACCGAGGAGATCTGCC  
 GCCGCGATCGCC

ATGGCCTTACACGACATGGAGGATTTTACATTTGATGGAACAAAGCGCTTAAGTGCAACTACGTGAAGG  
 GAATTCTTCAACCGACAGACACCTGTGACATCTGGGATAAGATCTGGAACCTCCAAGCCAAGCCTGATGA  
 CCTGCTTATTTCTACCTATCCTAAAGCAGGAACAACATGGACTCAGGAGATAGTGAATTAATACAAAAT  
 GAAGGTGATGTGGAGAAAAGTAAACGGGCACCGACTCATCAACGATTTCTTTCTCGAAATGAAAATCC  
 CATCCTTAGGATCTGGTTTGAACAAGCTCATGCAATGCCCTCACCACGGATCCTGAAAACACATCTTCC  
 CTTTCACTTGCTGCCACCATCCTTGCTAGAGAAAAGTGAAGATAATCTATGTAGCAAGAAATCCCAAG  
 GACAACATGGTGTCTATTACCATTTCCAAAGAATGAATAAAGCTCTTCTGCTCCAGGAACATGGGAAG  
 AGTATTTTGAGACTTTTCTGGCTGGGAAAGTGTCTGGGGCTCCTGGCATGAACATGTGAAAGGATGGTG  
 GGAAGCCAAGACAAACACCGTATTCTCTATCTTCTATGAGGACATGAAGAAGAACCCAAAGCATGAA  
 ATTCAGAAGCTGGCAGAATTTATTGGGAAGAAATTAGATGACAAAGTTCTAGATAAAATTGTCCATTACA  
 CTTGTTTTGATGTCATGAAACAGAATCCAATGGCAAATATTCATCGATTCTGCTGAAATCATGGACCA  
 CTCCATTTCTCCATTCATGAGAAAAGGGCAGTGGGAGACTGGAAGAAACACTTCACCGTGGCTCAGAAT  
 GAGAGATTTGATGAAGATTACAAGAAGAAATGACTGATACCAGACTAACTTTCCACTTCCAGTTC

ACGCGTACGCGGCCGCTCGAGCAGAAACTCATCTCAGAAGAGGATCTGGCAGCAAATGATATCCTGGATT  
 ACAAGGATGACGACGATAAGGTTTAA


[View online »](#)

**Protein Sequence:** >RC213146 representing NM\_006588  
 Red=Cloning site Green=Tags(s)

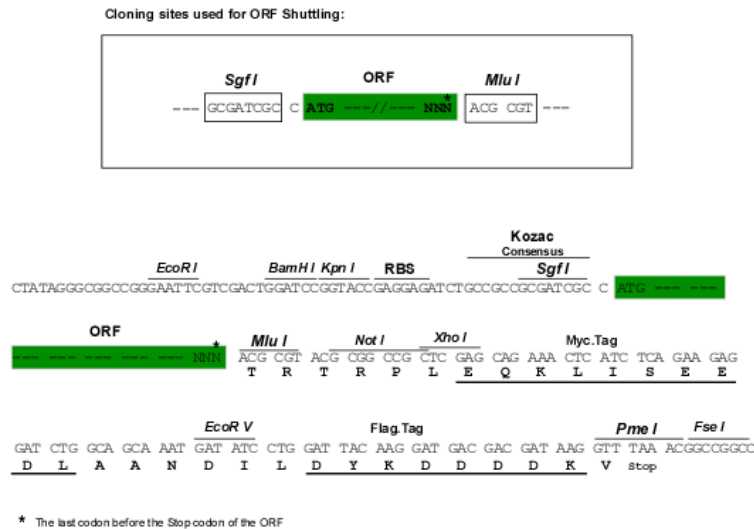
MALHDMEDFTFDGTRKLSVNYVKGILQPTDTCDIWFKIWNFQAKPDDL ISTYPKAGTTWTQEIVELIQN  
 EGDVEKSKRAPHQRFPFLEMKIPSLGSGLEQAHAMPSRILKTHLPFHLLPPSLLEKNCKIIYVARNPK  
 DNMSYYHFQRMNKALPAPGTWEEYFETFLAGKVCWGSWEHVKGWWEAKDKHRILYLFYEDMKKNPKHE  
 IQKLAEFIGKKLDDKVLDKIVHYTSFDVMKQNP MANYSSIPAEIMDHSISPFMRKGAVGDWKKHFTVAQN  
 ERFDDEYKKKMTDTRLTFHFQF

TRTRPLEQKLISEEDLAANDILDYKDDDDKV

**Chromatograms:** [https://cdn.origene.com/chromatograms/mk8024\\_d02.zip](https://cdn.origene.com/chromatograms/mk8024_d02.zip)

**Restriction Sites:** SgfI-MluI

**Cloning Scheme:**



**ACCN:** NM\_006588

**ORF Size:** 906 bp

**OTI Disclaimer:** The molecular sequence of this clone aligns with the gene accession number as a point of reference only. However, individual transcript sequences of the same gene can differ through naturally occurring variations (e.g. polymorphisms), each with its own valid existence. This clone is substantially in agreement with the reference, but a complete review of all prevailing variants is recommended prior to use. [More info](#)

**OTI Annotation:** This clone was engineered to express the complete ORF with an expression tag. Expression varies depending on the nature of the gene.

**Components:** The ORF clone is ion-exchange column purified and shipped in a 2D barcoded Matrix tube containing 10ug of transfection-ready, dried plasmid DNA (reconstitute with 100 ul of water).

**Reconstitution Method:**

1. Centrifuge at 5,000xg for 5min.
2. Carefully open the tube and add 100ul of sterile water to dissolve the DNA.
3. Close the tube and incubate for 10 minutes at room temperature.
4. Briefly vortex the tube and then do a quick spin (less than 5000xg) to concentrate the liquid at the bottom.
5. Store the suspended plasmid at -20°C. The DNA is stable for at least one year from date of shipping when stored at -20°C.

**Note:** Plasmids are not sterile. For experiments where strict sterility is required, filtration with 0.22um filter is required.

**RefSeq:** [NM\\_006588.4](#)

**RefSeq Size:** 1664 bp

**RefSeq ORF:** 909 bp

**Locus ID:** 27233

**UniProt ID:** [O75897](#)

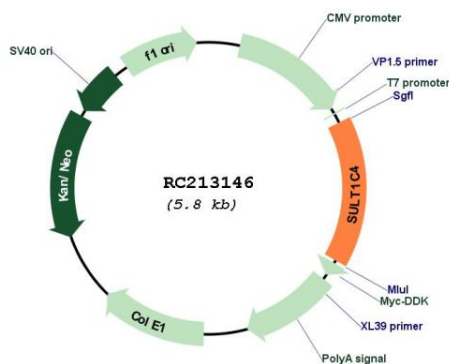
**Cytogenetics:** 2q12.3

**Domains:** Sulfotransfer

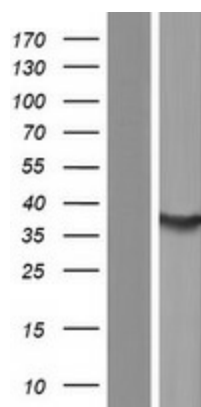
**MW:** 35.3 kDa

**Gene Summary:** Sulfotransferase enzymes catalyze the sulfate conjugation of many hormones, neurotransmitters, drugs, and xenobiotic compounds. These cytosolic enzymes are different in their tissue distributions and substrate specificities. The gene structure (number and length of exons) is similar among family members. This gene encodes a protein that belongs to the SULT1 subfamily, responsible for transferring a sulfo moiety from PAPS to phenol-containing compounds. [provided by RefSeq, Jul 2008]

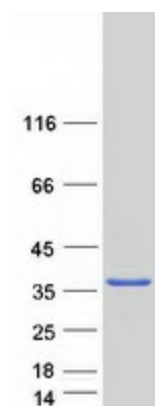
## Product images:



Circular map for RC213146



Western blot validation of overexpression lysate (Cat# [LY416541]) using anti-DDK antibody (Cat# [TA50011-100]). Left: Cell lysates from untransfected HEK293T cells; Right: Cell lysates from HEK293T cells transfected with RC213146 using transfection reagent MegaTran 2.0 (Cat# [TT210002]).



Coomassie blue staining of purified SULT1C4 protein (Cat# [TP313146]). The protein was produced from HEK293T cells transfected with SULT1C4 cDNA clone (Cat# RC213146) using MegaTran 2.0 (Cat# [TT210002]).