

Product datasheet for RC213142

Tubulin Polymerization Promoting Protein (TPPP) (NM_007030) Human Tagged ORF Clone

Product data:

Product Type:	Expression Plasmids
Product Name:	Tubulin Polymerization Promoting Protein (TPPP) (NM_007030) Human Tagged ORF Clone
Tag:	Myc-DDK
Symbol:	Tubulin Polymerization Promoting Protein
Synonyms:	p24; p25; p25alpha; TPPP/p25; TPPP1
Mammalian Cell Selection:	Neomycin
Vector:	pCMV6-Entry (PS100001)
E. coli Selection:	Kanamycin (25 ug/mL)
ORF Nucleotide Sequence:	>RC213142 ORF sequence Red=Cloning site Blue=ORF Green=Tags(s)

TTTTGTAATACGACTCACTATAGGGCGCCGGGAATTCGTCGACTGGATCCGGTACCGAGGAGATCTGCC
GCC**CGATCGCC**

ATGGCTGACAAGGCCAAGCCTGCCAAAGCTGCCAACAGGACGCCCCCAAGTCCCCGGGGGACCCCTCGA
AGGACCGGGCAGCCAAGAGGCTGTCGCTGGAATCGGAGGGTGCTGGTGAGGGGGCAGCCGCATCCCTGA
GCTCAGTGCCCTGGAGGAGGCCCTCCGGCGCTTTCGCGTGCACGGGGACCCAGGGCCACCGGGAGGGAG
ATGCACGGCAAGAAGTGGTGAAGCTGTGCAAGGACTGCCAGGTGATCGACGGCAGGAACGTGACCGTCA
CTGACGTGGACATCGTCTTCAGCAAGATCAAAGGGAAGTCTTGCCGGACCATCACCTTTGAGCAGTTCCA
GGAGGCGCTGGAGGAGCTCGCCAAGAAGCGATTCAAAGACAAGAGCAGCGAGGAGGCCGTTTCGCGAGGTG
CACAGGCTCATCGAGGGCAAGGCCCCATCATCTCAGGGGTGACGAAAGCCATCTCGTCGCCACAGTGT
CGAGGCTCACGGACACCACCAAGTTCACGGGCTCCCAAGGAGCGCTTCGACCCCTCTGGCAAGGGCAA
GGGCAAGGCTGGCCCGTGGATCTGGTGGACGAGTCAGGCTATGTGTCCGGCTACAAGCACGCAGGCACC
TACGACCAGAAGGTGCAAGGGGGCAAG

ACGCGTACGCGGGCGCTCGAGCAGAACTCATCTCAGAAGAGGATCTGGCAGCAAATGATATCTGGATT
ACAAGGATGACGACGATAAGGTTTAA



[View online »](#)

Protein Sequence: >RC213142 protein sequence
Red=Cloning site Green=Tags(s)

MADKAKPAKAANRTPPKSPGDPSKDRAAKRLSLESEGAGEGAAASPELSALEEAFRRFAVHGDARATGRE
 MHGKNWSKLCDCQVIDGRNVTVDVDIVFSKIKGKSCRTITFEQFQEALEELAKKRFDKSSEEAVREV
 HRLIEGKAPIISGVTKAIISSPTVSRLLDTTKFTGSHKERFDPSTGKGGKAGRVDLVDESGYVSGYKHAGT
 YDQKVQGGK

TRTRPLEQKLISEEDLAANDILDYKDDDDKV

Chromatograms: https://cdn.origene.com/chromatograms/mk6440_b12.zip

Restriction Sites: SgfI-MluI

Cloning Scheme:



ACCN: NM_007030

ORF Size: 657 bp

OTI Disclaimer: The molecular sequence of this clone aligns with the gene accession number as a point of reference only. However, individual transcript sequences of the same gene can differ through naturally occurring variations (e.g. polymorphisms), each with its own valid existence. This clone is substantially in agreement with the reference, but a complete review of all prevailing variants is recommended prior to use. [More info](#)

OTI Annotation: This clone was engineered to express the complete ORF with an expression tag. Expression varies depending on the nature of the gene.

Components: The ORF clone is ion-exchange column purified and shipped in a 2D barcoded Matrix tube containing 10ug of transfection-ready, dried plasmid DNA (reconstitute with 100 ul of water).

Reconstitution Method:

1. Centrifuge at 5,000xg for 5min.
2. Carefully open the tube and add 100ul of sterile water to dissolve the DNA.
3. Close the tube and incubate for 10 minutes at room temperature.
4. Briefly vortex the tube and then do a quick spin (less than 5000xg) to concentrate the liquid at the bottom.
5. Store the suspended plasmid at -20°C. The DNA is stable for at least one year from date of shipping when stored at -20°C.

Note: Plasmids are not sterile. For experiments where strict sterility is required, filtration with 0.22um filter is required.

RefSeq: [NM_007030.3](#)

RefSeq Size: 6039 bp

RefSeq ORF: 660 bp

Locus ID: 11076

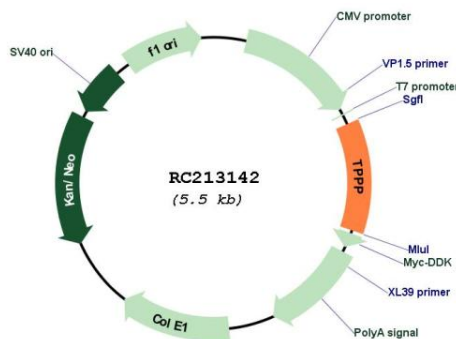
UniProt ID: [O94811](#)

Cytogenetics: 5p15.33

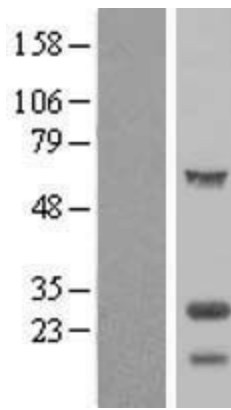
MW: 23.7 kDa

Gene Summary: May play a role in the polymerization of tubulin into microtubules, microtubule bundling and the stabilization of existing microtubules, thus maintaining the integrity of the microtubule network. May play a role in mitotic spindle assembly and nuclear envelope breakdown. [UniProtKB/Swiss-Prot Function]

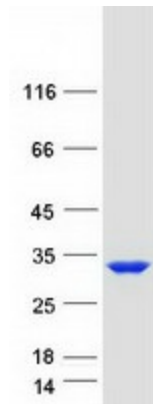
Product images:



Circular map for RC213142



Western blot validation of overexpression lysate (Cat# [LY416249]) using anti-DDK antibody (Cat# [TA50011-100]). Left: Cell lysates from untransfected HEK293T cells; Right: Cell lysates from HEK293T cells transfected with RC213142 using transfection reagent MegaTran 2.0 (Cat# [TT210002]).



Coomassie blue staining of purified TPPP protein (Cat# [TP313142]). The protein was produced from HEK293T cells transfected with TPPP cDNA clone (Cat# RC213142) using MegaTran 2.0 (Cat# [TT210002]).