

Product datasheet for **RC213140**

WFIKKN2 (NM_175575) Human Tagged ORF Clone

Product data:

Product Type:	Expression Plasmids
Product Name:	WFIKKN2 (NM_175575) Human Tagged ORF Clone
Tag:	Myc-DDK
Symbol:	WFIKKN2
Synonyms:	GASP-1; hGASP-1; WFDC20B; WFIKKNRP
Mammalian Cell Selection:	Neomycin
Vector:	pCMV6-Entry (PS100001)
E. coli Selection:	Kanamycin (25 ug/mL)



[View online »](#)

ORF Nucleotide Sequence:

>RC213140 representing NM_175575
 Red=Cloning site Blue=ORF Green=Tags(s)

TTTTGTAATACGACTCACTATAGGGCGGCCGGAATTCGTCGACTGGATCCGGTACCGAGGAGATCTGCC
 GCC**GCGATCGCC**

ATGTGGGCCCCAAGGTGTCGCCGTTCTGGTCTCGCTGGGAGCAGGTGGCAGCGTCTGCTGCTGCTGCTG
 TACTGCTCGGGTGCCCCGCGAAGCCTGGCGCTGCCGCCATCCGCTATCCCACGCCGCATCTGCC
 CAACGACATGAATCCCAACCTCTGGGTGGACGCACAGAGCACCTGCAGGCGGGAGTGTGAGACGGACCAG
 GAGTGTGAGACCTATGAGAAGTCTGCCCAACGTATGTGGGACCAAGAGCTGCGTGGCGGCCGCTACA
 TGGACGTGAAAGGGAAGAAGGGCCAGTGGCATGCCAAGGAGGCCACATGTGACCACTTCATGTGTCT
 GCAGCAGGGCTCTGAGTGTGACATCTGGGATGGCCAGCCCGTGTGTAAGTCAAAGACCCTGTGAGAAG
 GAGCCCAGCTTTACCTGCGCCTCGGACGGCCTCACCTACTATAACCGCTGCTACATGGATGCCGAGGCC
 GCTCAAAGGCATCACACTGGCCGTTGTAACCTGCCGCTACCTTCACCTGGCCCAACACCAGCCCCC
 ACCACCTGAGACCACCATGCACCCACCACAGCCTCCCCAGAGACCCCTGAGCTGGACATGGCGGCCCT
 GCCTGCTCAACAACCTGTGCACCAAGTCCGTCACCATGGGTGAGACAGTGGCTTCTCTGTGATGTGG
 TGGGCCGCCCCGGCCTGAGATCACTGGGAGAAGCAGTTGGAGGATCGGGAGAATGTGGTCATGCGGCC
 CAACCATGTGCGTGGCAACGTGGTGGTCAACAACATTGCCAGCTGGTCACTATAACGCCAGCTGCAG
 GATGCTGGGATCTACACCTGCACGGCCCGAACGTGGCTGGGGTCTGAGGGCTGATTTCCCGCTGTGCG
 TGGTCAGGGGTATCAGGCTGCAGCCACCTCAGAGAGCAGCCCCAATGGCACGGCTTTCCCGCGGCCGA
 GTGCCTGAAGCCCCCAGACAGTGAAGTGTGGCGAAGAGCAGACCCGCTGGCACTTCGATGCCAGGCC
 AACAACTGCCTGACCTTACCTTCGGCCACTGCCACCGTAACCTCAACCACTTTGAGACCTATGAGGCC
 GCATGCTGGCCTGCATGAGCGGGCCGCTGGCCGCTGCAGCCTGCCCGCCCTGCAGGGGCCCTGCAAAGC
 CTACGCGCCTCGCTGGGCTTACAACAGCCAGACGGGCCAGTGCCAGTCTTTGTCTATGGTGGCTGCGAG
 GGCAATGGCAACAACCTTTGAGAGCCGTGAGGCCTGTGAGGAGTCGTGCCCTTCCCAGGGGGAACCAGC
 GCTGTGCGGCCTGCAAGCCTCGGCAGAAGCTCGTTACCAGCTTCTGTGCGAGCGACTTTGTATCTCTGG
 CCGAGTCTCTGAGCTGACCGAGGAGCCTGACTCGGGCCGCGCCCTGGTACTGTGGATGAGGTCCTAAAG
 GATGAGAAAATGGGCCTCAAGTTCCTGGCCAGGAGCCATTGGAGGTCCTGCTTACGTTGACTGGG
 CATGCCCTGCCCAACGTGACCGTGAAGGAGATGCCGCTCATCATGGGGGAGTGGACGGCCGCAT
 GGCCATGCTGCGCCCGATAGCTTTGTGGGCGCATCGAGTCCCCCGGGTCCAGGAAGCTTCGTGAGGTC
 ATGCACAAGAAGACCTGTGACGCTCTCAAGGAGTTTCTTGGCTTGAC

ACGCGTACGCGGGCCGCTCGAGCAGAAACTCATCTCAGAAGAGGATCTGGCAGCAAATGATATCCTGGATT
 ACAAGGATGACGACGATAAGGTTTAA

Protein Sequence:

>RC213140 representing NM_175575
 Red=Cloning site Green=Tags(s)

MWAPRCRRFWSRWEQVAALLLLLLLLLVPPRSLALPPIRYSHAGICPNDMNPNLWVDAQSTCRRECETDQ
 ECETYEKCCPNVCGTKSCVAARYMDVKGKGPVGMPEKATCDHFMCLQQGSECDIWDGQPVKCKDRCEK
 EPSFTCASDGLTYNRCYMDAEACSKGITLAVVTCRYHFTWPNTSPPPPETTMHPTTASPETPELDMAAP
 ALLNPNVHQSVTMGETVSFLCDVVGRPRPEITWEKQLEDRENVMRPNHVRGNVVVNTNIAQLVIYNAQLQ
 DAGIYTCTARNVAGVLRADFPLSVVRGHQAAATSESSPNGTAFPAAECLKPPDSEDCGEEQTRWHFDAQA
 NNCLTFTFGHCHRNLNHFETYEACMLACMSGPLAACSLPALQGPKAYAPRWAYNSQTGQCQSFVYGGCE
 GNGNMFESREACEESCFPRGNQRCRACKPRQKLVTSFCRSDFVILGRVSELTEEPDSEGRALVTVDVFLK
 DEKMGLKFLGQEPLEVTLLHVDWACPCPNVTVSEMPIIMGEVDGGMAMLRPDSFVGASSARRVRKLRV
 MHKKTCDVLKEFLGLH

TRTRPLEQKLISEEDLAANDILDYKDDDDKV

Chromatograms:

https://cdn.origene.com/chromatograms/mk8024_d03.zip

Restriction Sites:

Sgfl-Mlul

Cloning Scheme:


ACCN: NM_175575

ORF Size: 1728 bp

OTI Disclaimer: The molecular sequence of this clone aligns with the gene accession number as a point of reference only. However, individual transcript sequences of the same gene can differ through naturally occurring variations (e.g. polymorphisms), each with its own valid existence. This clone is substantially in agreement with the reference, but a complete review of all prevailing variants is recommended prior to use. [More info](#)

OTI Annotation: This clone was engineered to express the complete ORF with an expression tag. Expression varies depending on the nature of the gene.

Components: The ORF clone is ion-exchange column purified and shipped in a 2D barcoded Matrix tube containing 10ug of transfection-ready, dried plasmid DNA (reconstitute with 100 ul of water).

- Reconstitution Method:**
1. Centrifuge at 5,000xg for 5min.
 2. Carefully open the tube and add 100ul of sterile water to dissolve the DNA.
 3. Close the tube and incubate for 10 minutes at room temperature.
 4. Briefly vortex the tube and then do a quick spin (less than 5000xg) to concentrate the liquid at the bottom.
 5. Store the suspended plasmid at -20°C. The DNA is stable for at least one year from date of shipping when stored at -20°C.

RefSeq: [NM_175575.6](#)

RefSeq Size: 3534 bp

RefSeq ORF: 1731 bp

Locus ID: 124857

UniProt ID: [Q8TEU8](#)

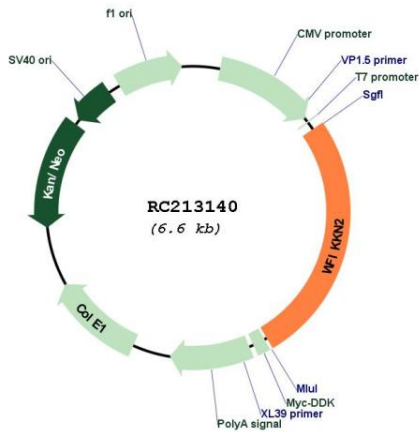
Cytogenetics: 17q21.33

Protein Families: Transmembrane

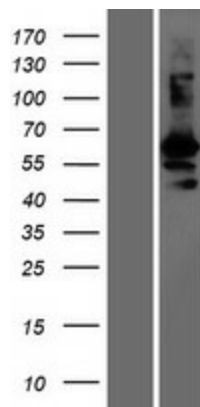
MW: 63.8 kDa

Gene Summary: The WFIKKN1 protein contains a WAP domain, follistatin domain, immunoglobulin domain, two tandem Kunitz domains, and an NTR domain. This gene encodes a WFIKKN1-related protein which has the same domain organization as the WFIKKN1 protein. The WAP-type, follistatin type, Kunitz-type, and NTR-type protease inhibitory domains may control the action of multiple types of proteases. [provided by RefSeq, Jul 2008]

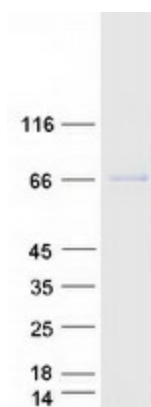
Product images:



Circular map for RC213140



Western blot validation of overexpression lysate (Cat# [LY406280]) using anti-DDK antibody (Cat# [TA50011-100]). Left: Cell lysates from untransfected HEK293T cells; Right: Cell lysates from HEK293T cells transfected with RC213140 using transfection reagent MegaTran 2.0 (Cat# [TT210002]).



Coomassie blue staining of purified WFIKKN2 protein (Cat# [TP313140]). The protein was produced from HEK293T cells transfected with WFIKKN2 cDNA clone (Cat# RC213140) using MegaTran 2.0 (Cat# [TT210002]).