

Product datasheet for **RC213136**

ICA1 (NM_022307) Human Tagged ORF Clone

Product data:

Product Type:	Expression Plasmids
Product Name:	ICA1 (NM_022307) Human Tagged ORF Clone
Tag:	Myc-DDK
Symbol:	ICA1
Synonyms:	ICA69; ICAp69
Mammalian Cell Selection:	Neomycin
Vector:	pCMV6-Entry (PS100001)
E. coli Selection:	Kanamycin (25 ug/mL)



[View online »](#)

ORF Nucleotide Sequence:

>RC213136 representing NM_022307
 Red=Cloning site Blue=ORF Green=Tags(s)

TTTTGTAATACGACTCACTATAGGGCGGCCGGAATTCGTCGACTGGATCCGGTACCGAGGAGATCTGCC
 GCC**GCGATCGCC**

ATGTCAGGACACAAATGCAGTTATCCCTGGGACTTACAGGATCGATATGCTCAAGATAAGTCAGTTGTAA
 ATAAGATGCAACAGAAATATTGGGAGACGAAGCAGGCCTTTATTAAGCCACAGGGAAGAAGGAAGATGA
 ACATGTTGTTGCCTCTGACCGGACCTGGATGCCAAGCTAGAGCTGTTTCATTCAATTCAGAGAACCTGT
 CTGGACTTATCGAAAGCAATTGTACTCTATCAAAAAGAGGATATGTTTCTGTCTCAAGAAGAAAACGAAC
 TGGGAAAATTTCTTCGATCCCAAGGTTTCCAAGATAAAACCAGAGCAGGAAAGATGATGCAAGCGACAGG
 AAAGGCCCTCTGCTTTTCTCCAGCAAAGGTTGGCCTTACGAAATCCTTTGTGTCGATTCACCAAGAA
 GTGGAGACTTTTCGGCATCGGGCATCTCAGATACTTGGCTGACGGTGAACCGCATGGAACAGTGCAGGA
 CGGAATATAGAGGAGCACTATTATGGATGAAGGACGTGTCTCAGGAGCTTGATCCAGACCTCTACAAGCA
 AATGGAGAAGTTCAGGAAGGTACAAACACAAGTGCCTTGCAAAAAAAAACTTTGACAAATTGAAGATG
 GATGTTTGTCAAAAAGTGGATCTTCTTGGAGCGAGCAGATGCAATCTCTTGTCTCACATGCTAGCAACAT
 ACCAGACCACTCTGCTTCATTTTGGGAGAAACTTCTCACACTATGGCAGCCATCCATGAGAGTTTCAA
 AGGTTATCAACCATATGAATTTACTACTTTAAAGAGCTTACAAGACCCTATGAAAAATAGTTGAGAAA
 GAAGAGAAGAAGAAAATCAACCAGCAGGAAAGTACAGATGCAGCCGTGCAGGAGCCGAGCCAATTAATTT
 CATTAGAGGAAGAAAACAGCGCAAGGAATCCTCTAGTTTTAAGACTGAAGATGGAAAAGTATTTTATC
 TGCCTTAGACAAAGGCTCTACACATACTGCATGCTCAGGACCCATAGATGAACTATTAGACATGAAATCT
 GAGGAAGGTGCTTGCCTGGGACCAGTGGCAGGGACCCCGGAACCTGAAGGTGCTGACAAAGATGGCCCTGT
 TGCTTGTGAGTGAGATCTCAATGCTTCTCCTTGGAGAGGGCGAGTTGACAAAGATGGCCCTGT
 GTTTGGAGACGGCAAGTGAAGGAGCCAGTCCCACTATGGCCCTGGGAGAGCCAGACCCCAAGGCCAG
 ACAGGCTCAGTTTCTTCTTCTCGAGCTTTTAGACAAAATATGAAAGACTTACAGGCCTCGCTACAAG
 AACCTGCTAAGGCTGCCTCAGACCTGACTGCCTGGTTCAGCCTCTTCGCTGACCTCGACCCACTCTCAAA
 TCCTGATGCTGTTGGAAAACCGATAAAGAACACGAATTGCTCAATGCA

ACGCGTACGCGGCCGCTCGAGCAGAAACTCATCTCAGAAGAGGATCTGGCAGCAATGATATCCTGGATT
 ACAAGGATGACGACGATAAGGTTTAA

Protein Sequence:

>RC213136 representing NM_022307
 Red=Cloning site Green=Tags(s)

MSGHKCSYPWDLQDRYAQDKSVVNKMQQKYWETKQAFIKATGKKEDEHVVASDADLDAKLELFHSIQRTC
 LDLSKAIVLYQKRICFLSQEENELGKFLRSQGFQDKTRAGKMMQATGKALCFSSQQLALRNPLCRFHQE
 VETFRHRAISDTWLTVNRMEQCRTEYRGALLWMKDVSQLDPDLYKQMEKFRKVQTQVRLAKKNFDKLM
 DVCQKVDLLGASRCNLLSHMLATYQTLLHFWEKTSHTMAAIHESFKGYQPYEFTTLKSLQDPMKKLVEK
 EEKKKINQQESTDAAVQEPSQLISLEENQRKESSEFKTEDGKSILSALDKGSTHTACSGPIDELLDKMS
 EEGACLGPVAGTPEPEGADKDDLLLLSEIFNASSLEEGERFKEWAAVFGDQVKEPVPTMALGEPDPAKQ
 TGSGLFPLSLLDQNMKDLQASLQEPAKAASDLTAWFSLFADLDPLSNPDAVGKTDKEHELLNA

TRTRPLEQKLISEEDLAANDILDYKDDDDKV

Chromatograms:

https://cdn.origene.com/chromatograms/mk6200_d03.zip

Restriction Sites:

Sgfl-Mlul

Cloning Scheme:

Cloning sites used for ORF Shutting:



* The last codon before the Stop codon of the ORF

ACCN: NM_022307

ORF Size: 1449 bp

OTI Disclaimer: The molecular sequence of this clone aligns with the gene accession number as a point of reference only. However, individual transcript sequences of the same gene can differ through naturally occurring variations (e.g. polymorphisms), each with its own valid existence. This clone is substantially in agreement with the reference, but a complete review of all prevailing variants is recommended prior to use. [More info](#)

OTI Annotation: This clone was engineered to express the complete ORF with an expression tag. Expression varies depending on the nature of the gene.

Components: The ORF clone is ion-exchange column purified and shipped in a 2D barcoded Matrix tube containing 10ug of transfection-ready, dried plasmid DNA (reconstitute with 100 ul of water).

Reconstitution Method:

1. Centrifuge at 5,000xg for 5min.
2. Carefully open the tube and add 100ul of sterile water to dissolve the DNA.
3. Close the tube and incubate for 10 minutes at room temperature.
4. Briefly vortex the tube and then do a quick spin (less than 5000xg) to concentrate the liquid at the bottom.
5. Store the suspended plasmid at -20°C. The DNA is stable for at least one year from date of shipping when stored at -20°C.

RefSeq: [NM_022307.3](#)
RefSeq Size: 2139 bp

RefSeq ORF: 1452 bp

Locus ID: 3382

UniProt ID: [Q05084](#)
Cytogenetics: 7p21.3

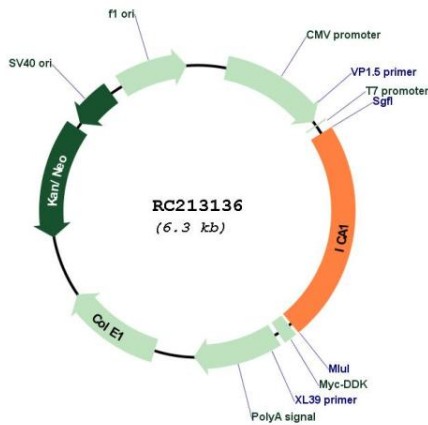
Domains: ICA69

Protein Pathways: Type I diabetes mellitus

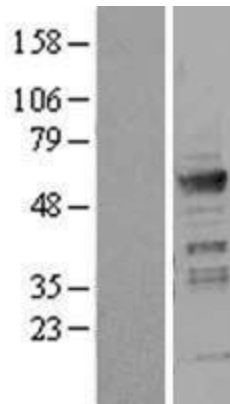
MW: 54.5 kDa

Gene Summary: This gene encodes a protein with an arfaptin homology domain that is found both in the cytosol and as membrane-bound form on the Golgi complex and immature secretory granules. This protein is believed to be an autoantigen in insulin-dependent diabetes mellitus and primary Sjogren's syndrome. Several transcript variants encoding two different isoforms have been found for this gene. [provided by RefSeq, Feb 2013]

Product images:



Circular map for RC213136



Western blot validation of overexpression lysate (Cat# [LY402921]) using anti-DDK antibody (Cat# [TA50011-100]). Left: Cell lysates from untransfected HEK293T cells; Right: Cell lysates from HEK293T cells transfected with RC213136 using transfection reagent MegaTran 2.0 (Cat# [TT210002]).