

Product datasheet for **RC213134**

NHEDC1 (SLC9B1) (NM_139173) Human Tagged ORF Clone

Product data:

Product Type:	Expression Plasmids
Product Name:	NHEDC1 (SLC9B1) (NM_139173) Human Tagged ORF Clone
Tag:	Myc-DDK
Symbol:	NHEDC1
Synonyms:	NHA1; NHEDC1
Mammalian Cell Selection:	Neomycin
Vector:	pCMV6-Entry (PS100001)
E. coli Selection:	Kanamycin (25 ug/mL)



[View online »](#)

ORF Nucleotide Sequence:

>RC213134 ORF sequence
 Red=Cloning site Blue=ORF Green=Tags(s)

TTTTGTAATACGACTCACTATAGGGCGGCCGGAATTCGTCGACTGGATCCGGTACCGAGGAGATCTGCC
 GCC**CGGATCGCC**

ATGCATACCACAGAATCAAAAAATGAACATTTGGAGGATGAAAACCTCCAACATCTACAACCTCCTCAGA
 GTCTCATTGATCCTAATAATACTGCACATGAAGAACTAAAACCTGCTTATCAGATACAGAAGAAATAAA
 ACCACAGACAAAAAGGAGACATACATTTCTTGTCTCTAAGAGGAGATTGAATGTAATTATTACAAAT
 GGAGTTATACTGTTGTGATATGGTGTATGACCTGGTCAATCTTAGGCTCTGAAGCTCTCCCTGGTGGAA
 ATTTATTTGGGTTGTTTATTATTTTATAGTGCCATTATTGGGGGAAAAATTTACAACCTATTAGAAT
 ACCTTTAGTGCCTCCACTCCACCTCTTCTGGGATGTTACTGGCTGGTTTTACGATTAGGAATGTTCCA
 TTCATCAATGAACATGCCATGTTCTAACACATGGTCTTCAATTTAAGAAGCATTGCCCTTACCATTA
 TTCTAATAAGAGCTGGGCTTGGACTCGATCCACAGGCTTTGAGGCATTTGAAGGTCGTTTGTTCAGATT
 GGCTGTAGTCCATGCCCTTATGGAGGCAAGTGCAGCTGCTGTTTTTCACTTCATTATGAAATTTCCC
 TGGCAATGGGCATTTCTATTAGTTTTGTTCTAGGTGCTGCTCTCTCTGCTGTTGTTGCCCTTACATGA
 TGGTGCTGCAAGAAAATGGATATGGTGTGAGGAAGCATTCCAACCTATTAATGGCTGCTAGCAGTAT
 GGATGACATTCTGGCTATCACTGGATCAATACATGCTTGAGCATAGTCTTTTCTCAGGTGGTATACTT
 AATAACGCCATAGCCTCTATAAGGAACGTATGTATTAGTCTGCTGGCAGGAATGTTTTGGGATTTTTG
 TTCGATATTTCCAAGTGAAGACCAGAAAAAATTACATTGAAGAGAGGATTCCTGTGTTGACTATGTG
 TGTTCCTGCCGCTTAGGCAGCCAACGTATTGGTTTACATGGATCTGGAGGATTATGCACACTAGTGTG
 AGTTTTCTGCAGGACAAAATGGTCCCAAGAAAAGATGAAAGTCCAAAAGATTATTACGACTGTATGGG
 ATATTTTTCAACCACTTCTTTTTGGTTTTAGTTGGAGCAGAAGTATCTGTTTCATCGCTTGAATCAAAT
 TGTGGCATATCTGTTGCCACTTAAGTTTGGCATTATGTGTTTGAATTTAACCACATATCTATTGATG
 TGCTTTGCTGTTTTAGTTTTAAGGAGAAAATATTTATTGCTTTAGCATGGATGCCCAAAGCTACAGTAC
 AGGCTGTGTTAGGTCCTCTGGCTCTAGAAAACAGCAAGAGTCTCCGACCCCACTTGAACCATATGCGAA
 GGATGTGATGACAGTAGCATTTTTAGCCATCTTGATCACAGCTCCAAATGGAGCTCTACTTATGGGCATT
 CTGGGGCCTAAAATGCTTACACGCCATTATGATCCAAGCAAAAATAAACTGCAGTTGTCAACATTAGAAC
 ATCAT

ACGCGTACGCGGCCGCTCGAGCAGAAACTCATCTCAGAAGAGGATCTGGCAGCAAATGATATCTGGATT
 ACAAGGATGACGACGATAAGGTTTAA

Protein Sequence:

>RC213134 protein sequence
 Red=Cloning site Green=Tags(s)

MHTTESKNEHLEDENFQTSTTPQSLIDPNNTAHEETKTVLSDTEEIKPQTKKETYISCLPRGVLNVIITN
 GVILFVIWCMTWSILGSEALPGGNLFGLFIIFYSAIIGGKILQLIRIPLVPPLPLLGMLLAGFTIRNVP
 FINEHVHPNTWSSILRSIALTIILIRAGLGLDPQALRHLKVVCFRLAVGPCLMEASAAAVFSHFIMKFP
 WQWAFLLGFVLGAVSPAVVVPYMMVLQENGYGVEEGIPTLLMAASSMDDILAITGFNTCLSIVFSSGGIL
 NNAIASIRNVCISLLAGIVLGFVRYFPSEDQKKLTLKRGFLVLTMCVSAVLGSQRIGLHGSGGLCTLVL
 SFIAGTKWSQEKMKVQKIITTVWDFQPLLFGLVGAEVSVSSLESNIVGISVATLSLALCVRILTYYLLM
 CFAGFSFKEKIFIALAWMPKATVQAVLGPLALETARVSAPHLEPYAKDVMVAFLAILITAPNGALLMGI
 LGPKMLTRHYDPSKIKLQLSTLEHH

TRTRPLEQKLISEEDLAANDILDYKDDDDKV

Chromatograms:

https://cdn.origene.com/chromatograms/mk6707_d12.zip

Restriction Sites:

Sgfl-MluI

Cloning Scheme:


ACCN: NM_139173

ORF Size: 1545 bp

OTI Disclaimer: The molecular sequence of this clone aligns with the gene accession number as a point of reference only. However, individual transcript sequences of the same gene can differ through naturally occurring variations (e.g. polymorphisms), each with its own valid existence. This clone is substantially in agreement with the reference, but a complete review of all prevailing variants is recommended prior to use. [More info](#)

OTI Annotation: This clone was engineered to express the complete ORF with an expression tag. Expression varies depending on the nature of the gene.

Components: The ORF clone is ion-exchange column purified and shipped in a 2D barcoded Matrix tube containing 10ug of transfection-ready, dried plasmid DNA (reconstitute with 100 ul of water).

- Reconstitution Method:**
1. Centrifuge at 5,000xg for 5min.
 2. Carefully open the tube and add 100ul of sterile water to dissolve the DNA.
 3. Close the tube and incubate for 10 minutes at room temperature.
 4. Briefly vortex the tube and then do a quick spin (less than 5000xg) to concentrate the liquid at the bottom.
 5. Store the suspended plasmid at -20°C. The DNA is stable for at least one year from date of shipping when stored at -20°C.

RefSeq: [NM_139173.3](#), [NP_631912.2](#)

RefSeq Size: 1879 bp

RefSeq ORF: 1548 bp

Locus ID: 150159

UniProt ID: [Q4ZII4](#)

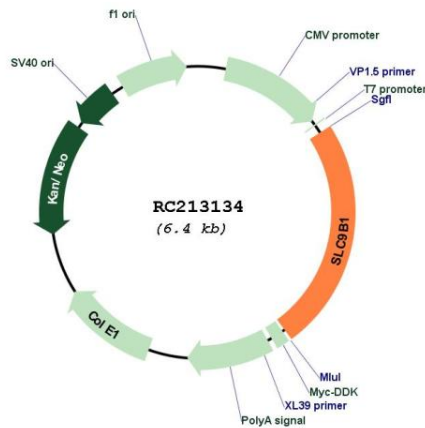
Cytogenetics: 4q24

Protein Families: Druggable Genome, Transmembrane

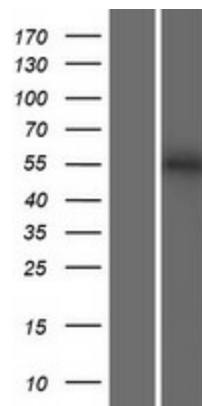
MW: 56.1 kDa

Gene Summary: The protein encoded by this gene is a sodium/hydrogen exchanger and transmembrane protein. Highly conserved orthologs of this gene have been found in other mammalian species. The expression of this gene may be limited to testis. Multiple transcript variants encoding different isoforms have been found for this gene. [provided by RefSeq, Jul 2010]

Product images:



Circular map for RC213134



Western blot validation of overexpression lysate (Cat# [LY408376]) using anti-DDK antibody (Cat# [TA50011-100]). Left: Cell lysates from untransfected HEK293T cells; Right: Cell lysates from HEK293T cells transfected with RC213134 using transfection reagent MegaTran 2.0 (Cat# [TT210002]).