

Product datasheet for RC213125

BSND (NM_057176) Human Tagged ORF Clone

Product data:

Product Type: Expression Plasmids
 Product Name: BSND (NM_057176) Human Tagged ORF Clone
 Tag: Myc-DDK
 Symbol: BSND
 Synonyms: BART; DFNB73
 Mammalian Cell Selection: Neomycin
 Vector: pCMV6-Entry (PS100001)
 E. coli Selection: Kanamycin (25 ug/mL)
 ORF Nucleotide Sequence: >RC213125 ORF sequence
 Red=Cloning site Blue=ORF Green=Tags(s)

TTTTGTAATACGACTCACTATAGGGCGGCCGGAATTCGTCGACTGGATCCGGTACCGAGGAGATCTGCC
 GCC**CGATCGCC**

ATGGCTGACGAGAAGACCTTCCGGATCGGCTTCATTGTGCTGGGGCTTTTCTGCTGGCCCTCGGTACGT
 TCCTCATGAGCCATGATCGGCCAGGTCTACGGCACCTTCTATGCCATGGGCAGCGTCATGGTATCGG
 GGGCATCATCTGGAGCATGTGCCAGTGCTACCCCAAGATCACCTTCGTCCTGCTGACTCTGACTTTCAA
 GGCATCCTCTCCCAAAGGCCATGGCCCTGCTGGAGAATGGCTTGTGCCGAGATGAAGAGCCCCAGTC
 CCCAGCCGCCCTATGTAAGGCTGTGGGAGGAAGCCGCTATGACCAGAGCCTGCCTGACTTCAGCCACAT
 CCAGATGAAAGTCATGAGCTACAGTGAGGACCACCGCTCCTTGCTGGCCCTGAGATGGGGCAGCCGAAG
 CTGGGAACCAAGTATGGAGGAGAAGGTGGCCCTGGCGACGTTTCAGGCCTGGATGGAGGCTGCCGTGGTCA
 TCCACAAGGGCTCAGACGAGAGTGAAGGGGAAAGACGCCTAACTCAGAGCTGGCCCGCCCCCTGGCCTG
 TCCCCAGGGCCCTGCCCCCTTGGCTTCTTCCAAGATGACCTGGACATGGACTCCAGTGAAGGCAGCAGC
 CCCAATGCATCTCCATGACAGGGAGGAAGCTTGTTCCCAACAGGAACCTCAGGGCTGCAGGTGCC
 CGCTGGACCGCTTCCAAGACTTTGCCCTGATTGATGCCCAACGTTGGAGGATGAGCCCCAAGAGGGGCA
 GCAGTGGGAAATAGCCCTGCCCAACACTGGCAGCGGTACCCAAGGACAAAGGTGGAGGAGAAGGAGGCT
 TCGGACACAGGTGGGAGGAACCTGAGAAGGAAGAGGAAGACCTGTACTATGGCTGCCAGATGGAGCCG
 GGGACCTCTCCCGACAAGGAGCTGGGTTTTGAGCCTGACACCCAAGGC

ACGCGTACGCGGCCGCTCGAGCAGAACTCATCTCAGAAGAGGATCTGGCAGCAAATGATATCCTGGATT
 ACAAGGATGACGACGATAAGGTTTAA



[View online »](#)

Protein Sequence: >RC213125 protein sequence
Red=Cloning site Green=Tags(s)

MADEKTRIGFIVLGLFLLALGTFLMSHDRPQVYGTFFYAMGSVMVIGGIWSMCQCPKITFVPADSDFQ
 GILSPKAMGLLENGLAEMKSPSPQPPYVRLWEEAAYDQSLPDFSHIQMKVMSYSEDHRSLLAPEMGQPK
 LGTSDGGEGGPGDVQAWMEAAVVIIHKGSDESEGERRLTQSWPGLACQPAPLASFQDDLDMSSEGSS
 PNASPHDREEACSPQQEPQGCRCPLDRFQDFALIDAPTLDEPEQEGQWEIALPNNWQRYPRTKVEEKEA
 SDTGEEPEKEEEDLYGLPDGAGDLLPKELGFEPDTQG

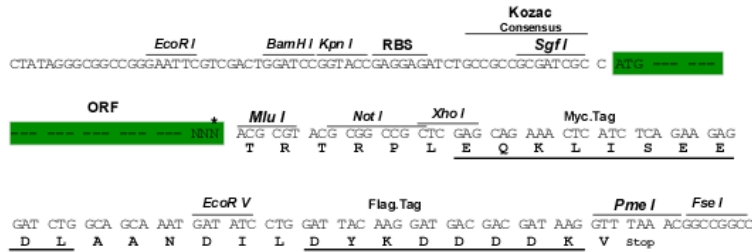
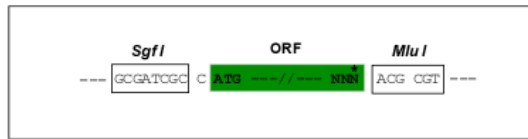
TRTRPLEQKLISEEDLAANDILDYKDDDDKV

Chromatograms: https://cdn.origene.com/chromatograms/mk6450_c10.zip

Restriction Sites: SgfI-MluI

Cloning Scheme:

Cloning sites used for ORF Shutting:



* The last codon before the Stop codon of the ORF

ACCN: NM_057176

ORF Size: 960 bp

OTI Disclaimer: The molecular sequence of this clone aligns with the gene accession number as a point of reference only. However, individual transcript sequences of the same gene can differ through naturally occurring variations (e.g. polymorphisms), each with its own valid existence. This clone is substantially in agreement with the reference, but a complete review of all prevailing variants is recommended prior to use. [More info](#)

OTI Annotation: This clone was engineered to express the complete ORF with an expression tag. Expression varies depending on the nature of the gene.

Components: The ORF clone is ion-exchange column purified and shipped in a 2D barcoded Matrix tube containing 10ug of transfection-ready, dried plasmid DNA (reconstitute with 100 ul of water).

Reconstitution Method:

1. Centrifuge at 5,000xg for 5min.
2. Carefully open the tube and add 100ul of sterile water to dissolve the DNA.
3. Close the tube and incubate for 10 minutes at room temperature.
4. Briefly vortex the tube and then do a quick spin (less than 5000xg) to concentrate the liquid at the bottom.
5. Store the suspended plasmid at -20°C. The DNA is stable for at least one year from date of shipping when stored at -20°C.

Note: Plasmids are not sterile. For experiments where strict sterility is required, filtration with 0.22um filter is required.

RefSeq: [NM_057176.3](#)

RefSeq Size: 1396 bp

RefSeq ORF: 963 bp

Locus ID: 7809

UniProt ID: [Q8WZ55](#)

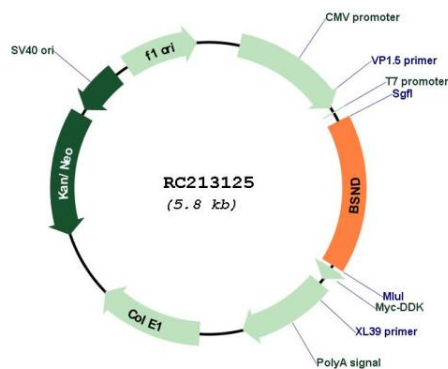
Cytogenetics: 1p32.3

Protein Families: Druggable Genome, Transmembrane

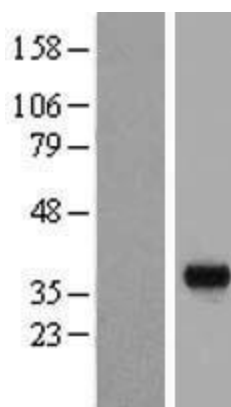
MW: 35.2 kDa

Gene Summary: This gene encodes an essential beta subunit for CLC chloride channels. These heteromeric channels localize to basolateral membranes of renal tubules and of potassium-secreting epithelia of the inner ear. Mutations in this gene have been associated with Bartter syndrome with sensorineural deafness. [provided by RefSeq, Jul 2008]

Product images:



Circular map for RC213125



Western blot validation of overexpression lysate (Cat# [LY409274]) using anti-DDK antibody (Cat# [TA50011-100]). Left: Cell lysates from untransfected HEK293T cells; Right: Cell lysates from HEK293T cells transfected with RC213125 using transfection reagent MegaTran 2.0 (Cat# [TT210002]).