

## Product datasheet for RC213112L1

### PI 3 Kinase catalytic subunit alpha (PIK3CA) (NM\_006218) Human Tagged Lenti ORF Clone

#### Product data:

Product Type:	Expression Plasmids
Product Name:	PI 3 Kinase catalytic subunit alpha (PIK3CA) (NM_006218) Human Tagged Lenti ORF Clone
Tag:	Myc-DDK
Symbol:	PI 3 Kinase catalytic subunit alpha
Synonyms:	CLAPO; CLOVE; CWS5; MCAP; MCM; MCMTC; p110-alpha; PI3K; PI3K-alpha
Mammalian Cell Selection:	None
Vector:	pLenti-C-Myc-DDK (PS100064)
E. coli Selection:	Chloramphenicol (34 ug/mL)
ORF Nucleotide Sequence:	The ORF insert of this clone is exactly the same as(RC213112).
Restriction Sites:	SgfI-MluI
Cloning Scheme:	

Cloning sites used for ORF Shuttling:



\* The last codon before the Stop codon of the ORF.

ACCN:	NM_006218
ORF Size:	3204 bp



[View online >](#)

<b>OTI Disclaimer:</b>	<p>Due to the inherent nature of this plasmid, standard methods to replicate additional amounts of DNA in E. coli are highly likely to result in mutations and/or rearrangements. Therefore, OriGene does not guarantee the capability to replicate this plasmid DNA. Additional amounts of DNA can be purchased from OriGene with batch-specific, full-sequence verification at a reduced cost. Please contact our customer care team at <a href="mailto:custsupport@origene.com">custsupport@origene.com</a> or by calling 301.340.3188 option 3 for pricing and delivery.</p> <p>The molecular sequence of this clone aligns with the gene accession number as a point of reference only. However, individual transcript sequences of the same gene can differ through naturally occurring variations (e.g. polymorphisms), each with its own valid existence. This clone is substantially in agreement with the reference, but a complete review of all prevailing variants is recommended prior to use. <a href="#">More info</a></p>
<b>OTI Annotation:</b>	This clone was engineered to express the complete ORF with an expression tag. Expression varies depending on the nature of the gene.
<b>Components:</b>	The ORF clone is ion-exchange column purified and shipped in a 2D barcoded Matrix tube containing 10ug of transfection-ready, dried plasmid DNA (reconstitute with 100 ul of water).
<b>Reconstitution Method:</b>	<ol style="list-style-type: none"> <li>1. Centrifuge at 5,000xg for 5min.</li> <li>2. Carefully open the tube and add 100ul of sterile water to dissolve the DNA.</li> <li>3. Close the tube and incubate for 10 minutes at room temperature.</li> <li>4. Briefly vortex the tube and then do a quick spin (less than 5000xg) to concentrate the liquid at the bottom.</li> <li>5. Store the suspended plasmid at -20°C. The DNA is stable for at least one year from date of shipping when stored at -20°C.</li> </ol>
<b>RefSeq:</b>	<a href="#">NM_006218.2</a>
<b>RefSeq Size:</b>	3724 bp
<b>RefSeq ORF:</b>	3207 bp
<b>Locus ID:</b>	5290
<b>UniProt ID:</b>	<a href="#">P42336</a>
<b>Cytogenetics:</b>	3q26.32
<b>Domains:</b>	PI3K_rbd, PI3_PI4_kinase, PI3Ka, PI3K_C2, PI3K_p85B
<b>Protein Families:</b>	Druggable Genome

**Protein Pathways:**

Acute myeloid leukemia, Apoptosis, B cell receptor signaling pathway, Chemokine signaling pathway, Chronic myeloid leukemia, Colorectal cancer, Endometrial cancer, ErbB signaling pathway, Fc epsilon RI signaling pathway, Fc gamma R-mediated phagocytosis, Focal adhesion, Glioma, Inositol phosphate metabolism, Insulin signaling pathway, Jak-STAT signaling pathway, Leukocyte transendothelial migration, Melanoma, mTOR signaling pathway, Natural killer cell mediated cytotoxicity, Neurotrophin signaling pathway, Non-small cell lung cancer, Pancreatic cancer, Pathways in cancer, Phosphatidylinositol signaling system, Progesterone-mediated oocyte maturation, Prostate cancer, Regulation of actin cytoskeleton, Renal cell carcinoma, Small cell lung cancer, T cell receptor signaling pathway, Toll-like receptor signaling pathway, Type II diabetes mellitus, VEGF signaling pathway

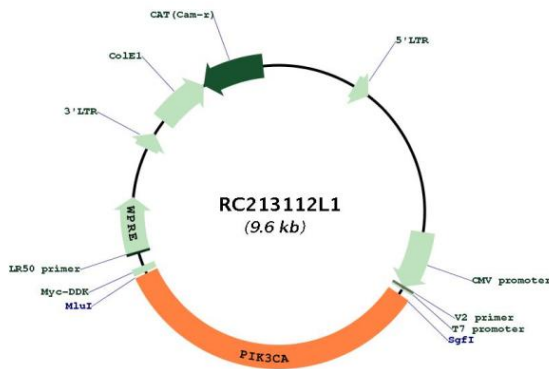
**MW:**

124.7 kDa

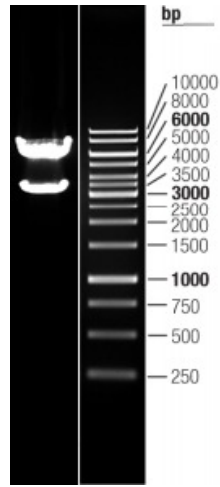
**Gene Summary:**

Phosphatidylinositol 3-kinase is composed of an 85 kDa regulatory subunit and a 110 kDa catalytic subunit. The protein encoded by this gene represents the catalytic subunit, which uses ATP to phosphorylate PtdIns, PtdIns4P and PtdIns(4,5)P2. This gene has been found to be oncogenic and has been implicated in cervical cancers. A pseudogene of this gene has been defined on chromosome 22. [provided by RefSeq, Apr 2016]

**Product images:**



Circular map for RC213112L1



Double digestion of RC213112L1 using SgfI and MluI