

Product datasheet for **RC213108**

KRBA1 (NM_032534) Human Tagged ORF Clone

Product data:

Product Type:	Expression Plasmids
Product Name:	KRBA1 (NM_032534) Human Tagged ORF Clone
Tag:	Myc-DDK
Symbol:	KRBA1
Mammalian Cell Selection:	Neomycin
Vector:	pCMV6-Entry (PS100001)
E. coli Selection:	Kanamycin (25 ug/mL)
ORF Nucleotide Sequence:	>RC213108 representing NM_032534 Red=Cloning site Blue=ORF Green=Tags(s)

TTTTGTAATACGACTCACTATAGGGCGGCCGGAATTCGTCGACTGGATCCGGTACCGAGGAGATCTGCC
GCC**CGATCGCC**

ATGCGGGAGA**ACTACGAGACGCTGGTCTCTGTGGGGACAGCTGAGCTGCTCCCCCTCTCTGCTTTCCTGT**
CACCTCAGAGCCTGGAAGAGCTGTTGGGGGAGGGAGCCACGCTGATGAGGGGCAGGAGCCTGCTGGTTG
TGGAGATCCCCAGGGGGACAGCCCCGGCACAGCCTGCACCTCACAGCCCTGGTGCAGCTGGTGAAGGAG
ATCCCAGAGTTCTTGTGGAGAAGTCAAGGGCGCTATGGACAGCCCCGAGAGCGAGAGCCGGGGAGCCA
GCCTGGATGGAGAGAGCGAGCCCCGAGGCAGCTGCGGCAAGAGAGCCCTGCCCTC**CCGAGCCCTGCT**
CAGCTGCCTTCCAGACGGCCCTACCAGCCAGCCACCTGGCCACCACGCCACCAGCAGCTCGTGTTC
AGTGGCCCAACTGGTGCAGGGGTCCAGGGAAGTCTCTCCCCATCAAAACTGCCGACAAACCGTGGCCTA
CAAGGAAGGAAGGCCAGGAGCCCTGGCGGGGAGCCAGCCCTCCACCCATAGCCCCAGCAGGAGGAA
GAGCCACAGAGGACAGGAGAGAGGGACCTCAGAGGCCGAATTTCTCTGGGAACAGCCCTTGAAGGC
CTCATCAACTGTCTGAAGGAAATCCTTGTGCCTGGGCCCGGCACCCCGAGACATCCCCAAGCTTCTTGC
CACCTCTCCCTAGCCTGGGCACGTCCAGGTAACCAGAGCAGACCTGGGGCTGGGAGCCCGCCCTGGG
AGTGAAGACCGAGCGGTTTCAGGGGATTGTCCCCTCCAGGTCTGCTACTGTCTGAAGGAGCTCCCC
GAGGCCAGGACAGGCATCCCAGTCCCTCAGGAGTGGGGAACCGAGCGCTACAGGAGAATCCAGGAGCCT
GGAAAAGGGGTTCTGGAGGGCCTGGATACCTCCTGACCCCTCCTCCCCATCCTGATCTTGGAGCTGGCGG
TCTGCTCTCTGTGAAGATGGAGAACAGCTGGGTCCAGAGCCCCCAGGACCTGCATCCTGTGACGCTGGC
AGGCAGCCCTCAGTCCCTCAGCCACTGGAGACACCAGAGGGGTCCCCAACCAGCTGGGGCCCTGAGG
CTCAAGCTGCCAGTGCCTCAAGCTCACCCTGGAAGCCCTGGAAGCCTGTCTGAAGGGCATTCCCCAAA
TGGGTCTGACCTTCCAGCTGCCACCCACTTCTTGTCCAGAACCCCGAGCCAGGAGACTCTAGGTCT
CAGAAGCCTGAAGTCAACCCACAGATCACACAGTGAAGAAGCGACAGAGAGCCTGTTCTGCCTCTGG
GTCTGCAGAGCTGTGTGAGAGATGGCCCCAGCAGGCCCTGGCCCCCGAGGAACCCCAACAGCTTCTC
CTCATCCAGCAGCACCAGCTGGGACCTGGATTTGGGAGTCTGTGGGGAACCGGGGACAGCATCTGGA
AAAGGAAGCCCAACAGGAAGCTCCCACTGAGGGTCTGGAGAATTGTCTCAAGGAGATACCTGTGCCTG
TGCTGCGGCTGCCTGGCCCTGCTCCTCAGCAGCAGACAGGGGACCGAGGAGAGCAGAGCCAGGAAGCTG



[View online >](#)

GACAGCAGACAAGGAAGGACTGAGGGCTGAGGCCTGCGAGTCAGCCCGTCTCGGGCAGGGTAGGGGAGAA
 GCGCCACCCGGAGCCTCCATCTGGTCAGCCACAGGTGTTACCTCCAGCTGCGTCCCCGCTGCCACC
 AGCGGGGTTCAAAGACCCTGGGGCCACCAGGCCAGGAGTGTGGAGTGGCTCCCAGAGGGGTGCTGCCCC
 CAAGCCCTCCCCGCTGCACTGCCTGGAGAGCGCCTGAGGGGATCTTGCCTGTAAGGCCCTTGCCTTC
 GCCTGCGTGGGAGGCCAGCCCCAGCCCCAGCCCCGGCTCCAGCTCGAGCTTACAGCGCTCTGAAGGAG
 AAGACCCGAGGCCAGAGCCTGAGCTCTGGAAGCCGCTCCCCAGGAGAGGGACCGCTTCCAGCTGTAA
 GCCTCTGTCCCTGTCCCCATGTCTGTGGTGGGACCCCTGCTGGCAGCAGTGGCGGCAGCCCTGGTGAA
 GACCCCAGGAGAACAGAGCCAGGTACTGCAGCGCCTCGGTGCAGGTACAGCTCAGGATCCCTGCCCGG
 TTTCTCAGCTGGAGAAAAGGCCAGGGTTAGTGAAGCATCCAGAGCCTGGAGCTTGGACATGGAAGACC
 CAGAGTTGCAGCAAGACCCATGAGAGGCTGCTCCCCAGGGCCCGCTGAGCTGCCAGTGAAGTCTCC
 CCTCCGGAGTGGCCCTCCGGAAGCTGCGCCTCTGTGTGCCAGCCTCCTCCCTGCAGCCGCATGCC
 ACTGTGGGAAGCCCTGCAGCAGGAGCTGCACAGCCTCGGTGCTGCCCTTGGGAGAAGCTGGATCGGT
 CGCCACAGCGCTGGCAGGCTGGCTCAGGAAGTGGCCACCATGAGGACCCAGTGAATCGGTGGGAGG
 CGCCCCAAGGCCCTGGCCAATGGCCAAGCTTCTGGATGTGGACCTCCACGGGGACCTCGTGGG
 TCATGGCCCTGGTCACAGACATCTGCCCTACTGGAGGCAGAAGGGACCCACGAGCCTAAACAAAGAT
 CCTGCGTGGCCAGGGAGAGAGCTCAGGGCTGGTACCTGCAAGGACTCTCCAGAGGGACCGCTCGCCGG
 GCACGTCCGCTGCCTCCAGACGCTCCCCGGCAGAACCTCCTGGGCTCCACTGCAGCTTCCCAGCAGC
 TGCTGTCTCTACACCCAGCTGCCATGCTGCGCCGCTGCACACCCCTCCTCGCACATACCGGGGGCCA
 CCAGAGCCCCCTTCCCCCTTAGTGCCTGCTGCCTTACCCTGCAGGGAGCCTCTCCTCCTGCAGCCAGT
 GCAGATGCAGACGTGCCGACCTCAGGAGTGGCACCAGACGGGATCCCAGAGCGGCCAAGGAGCCGAGCA
 GCCTGTGGGAGAGTGCAGAGGGCCCTCCAGGAAGAAGTGTGGGTGGGAGCACAGGGACCCGAGATG
 GGGGGCGCAT

ACGCGTACGCGGCGCTCGAGCAGAACTCATCTCAGAAGAGGATCTGGCAGCAAATGATATCCTGGATT
 ACAAGGATGACGACGATAAGGTTTAA

Protein Sequence:

>RC213108 representing NM_032534
 Red=Cloning site Green=Tags(s)

MRENYETLVSVGTAEELLPLSAFLSPSEPRGAVGGSHADEGQEPAGCGDPQGGQPRHSLHLTALVQLVKE
 IPEFLFGEVKGAMDSPESERASLDGERASPEAAAAREPCPLRGLLSCLPDGPTSQPHLATTPTDSSCS
 SGPTGDGVQGSPLPIKTADKPWPTRKEGPGALGGEPSPPTHSPSRKSHRQERGTSEAGISPGNSPLQG
 LINCLKEILVPGPRHPETSPSFLPPLPSLGTSLRTRADLPGSPPWAVKTEAVSGDCPLQGLLHCLKELP
 EAQDRHPSPSGVGNRRLQENPGAWKRGSGGPGYLLTPPHPDLAGGLLSVKMENSWVQSPGPASCQPG
 RQPLSPSATGDRGVPQPSWGPEAQAASASSSPLALEACLKGIPPNGSSPSQLPPTSCSQNPQPGDSRS
 QKPELQPHRSHSEETREPVLPLGLQSCVRDGP SRPLAPRGTPTSFSSSSTDWDLDFGSPVGNQGHQHPG
 KGSPGSSPLQGLENCLKEIPVPVLRPAWPCSSAADRGPRRAEPRNWTADKEGLRAEACESARLQGGRGE
 APTRSLHLVSPQVFTSSCVPACHQRGFKDPGATRPGVWRWLEPGSAPKPSPLHCLLESALRGILPVRPLRF
 ACVGGSPSPSPGSSSFSGSEGEDPRPELWKPLPQERDRLPSCPPVPLSPCPGGTPAGSSGGSPGE
 DRRRTEPRYCSGLGAGTAQDPCPVSQLERPRVSEASRGLLGHGRPRVAAKTHERLLPQGPPELPSESP
 PPELPPPEAAPPVLPASSLQPPCHCGKPLQQLHSLGAALAEKLDRLATALAGLAQEVATMRTQVNRLGR
 RPQGGPMQASWMTLPRGPRWAHGPGRHLPYWRQKGPTRPKPKILRGQGESCRAGDLQGLSRGTARR
 ARPLPPDAPPAEPPGLHCSSSQLLSSTPSCHAAPPAHPLLAHTGGHQSPLPPLVPAALPLQGASPPAAS
 ADADVPTSGVAPDGIPEPKPSSLLGGVQRALQEELWGGEHRDPRWGAH

TRTRPLEQKLISEEDLAANDILDYKDDDDKV

Chromatograms:

https://cdn.origene.com/chromatograms/mk8024_d08.zip

Restriction Sites:

Sgfl-MluI

Cloning Scheme:


ACCN: NM_032534

ORF Size: 3090 bp

OTI Disclaimer: The molecular sequence of this clone aligns with the gene accession number as a point of reference only. However, individual transcript sequences of the same gene can differ through naturally occurring variations (e.g. polymorphisms), each with its own valid existence. This clone is substantially in agreement with the reference, but a complete review of all prevailing variants is recommended prior to use. [More info](#)

OTI Annotation: This clone was engineered to express the complete ORF with an expression tag. Expression varies depending on the nature of the gene.

Components: The ORF clone is ion-exchange column purified and shipped in a 2D barcoded Matrix tube containing 10ug of transfection-ready, dried plasmid DNA (reconstitute with 100 ul of water).

Reconstitution Method:

1. Centrifuge at 5,000xg for 5min.
2. Carefully open the tube and add 100ul of sterile water to dissolve the DNA.
3. Close the tube and incubate for 10 minutes at room temperature.
4. Briefly vortex the tube and then do a quick spin (less than 5000xg) to concentrate the liquid at the bottom.
5. Store the suspended plasmid at -20°C. The DNA is stable for at least one year from date of shipping when stored at -20°C.

RefSeq: [NM_032534.1](#), [NP_115923.1](#)

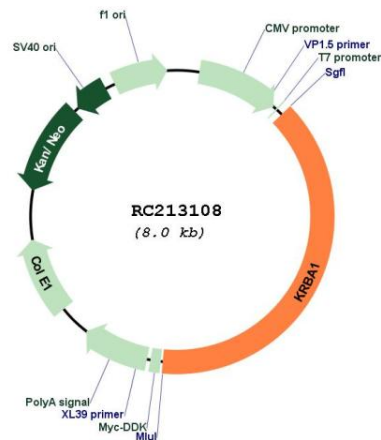
RefSeq Size: 4018 bp

RefSeq ORF: 3093 bp

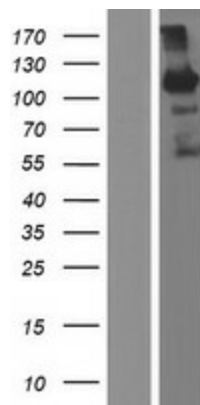
Locus ID: 84626

UniProt ID: [A5PL33](#)
 Cytogenetics: 7q36.1
 MW: 107.3 kDa

Product images:



Circular map for RC213108



Western blot validation of overexpression lysate (Cat# [LY410063]) using anti-DDK antibody (Cat# [TA50011-100]). Left: Cell lysates from untransfected HEK293T cells; Right: Cell lysates from HEK293T cells transfected with RC213108 using transfection reagent MegaTran 2.0 (Cat# [TT210002]).