

Product datasheet for **RC213104**

PPEF1 (NM_152224) Human Tagged ORF Clone

Product data:

Product Type:	Expression Plasmids
Product Name:	PPEF1 (NM_152224) Human Tagged ORF Clone
Tag:	Myc-DDK
Symbol:	PPEF1
Synonyms:	PP7; PPEF; PPP7C; PPP7CA
Mammalian Cell Selection:	Neomycin
Vector:	pCMV6-Entry (PS100001)
E. coli Selection:	Kanamycin (25 ug/mL)



[View online »](#)

ORF Nucleotide Sequence:

>RC213104 representing NM_152224
 Red=Cloning site Blue=ORF Green=Tags(s)

TTTTGTAATACGACTCACTATAGGGCGGCCGGAATTCGTCGACTGGATCCGGTACCGAGGAGATCTGCC
 GCC**CGCATCGCC**

ATGGGATGCAGCAGTTCTTCAACGAAAACCAGGAGATCTGACACATCACTGAGAGCTGCGTTGATCATCC
 AGAACTGGTACCGAGGTTACAAAGCTCGACTGAAGGCCAGACAACACTATGCCCTCACCATCTTCCAGTC
 CATCGAATATGCTGATGAACAAGGCCAAATGCAGTTATCCACCTTCTTTTCTTTCATGTTGGAAAACAC
 ACACATATACATAAGGAAGAGCTAGAATTAAGAAATCAGTCTCTTGAAAGCGAACAGGACATGAGGGATA
 GATGGGATTATGTGGACTCGATAGATGTCCAGACTCCTATAATGGTCTCGGCTACAATTTCTCTCAC
 TTGTACGGATATTGATTTACTTCTTGAGGCCTCAAGGAACAACAGATACTTCATGCCATTATGTCTTA
 GAGGTGCTATTTGAAACCAAGAAAGTCTGAAGCAAATGCCGAATTTCACTCACATACAACTTCTCCCT
 CCAAAGAGGTAACAATCTGTGGTATTTGCATGGGAACTGGATGATCTTTTTTGTCTTCTACAAGAA
 TGGTCTCCCTCAGAGAGGAACCGTATGTTTTAATGGTGACTTGTAGATCGAGGAAAGAATTCATA
 GAGATCCTAATGATCCTGTGTGTGAGTTTTCTGTCTACCCCAATGACCTGCCTGAACAGAGGGAACC
 ACGAAGATTTTATGATGAATCTGAGGTATGGCTTACGAAAAGAAATTTGCATAAATAAGCTACATGG
 AAAAGAATCTTACAAATCTTGGAGAATTCTATGCCTGGCTCCCAATCGGTACAATCGTTGACAATGAA
 ATCCTGGTCATCCATGGTGGGATATCAGAGACCACAGACTTGAATTTACTCCACCGTGTAGAGAGGAACA
 AGATGAAATCTGTGCTGATACCACCAACGGAAACAAACAGAGACCATGACTGACTCGAAGCACAATAA
 AATTATTGATATTCTGTGGAGTGATCCCAGAGGCCAAAAATGGCTGTTTTCCAAATACGTGCCGAGGAGG
 GGCTGCTATTTTGACCAGATGTTACTTCCAAGATTCTTAATAAATACCAGTTGAAGATGCTCATCAGGT
 CTCATGAATGTAAGCCCGAAGGGTATGAAATCTGTCATGATGGGAAGGTGGTACTATTTTTCTGCTTC
 TAATTATTATGAAGAAGGCAGCAATCGAGGAGCTTACATCAAACATATGTTCTGGTACAACCTCCTCGATT
 TTCCAGTACCAAGTAACTAAAGCAACGTCTTTCAGCCTCTTCGCCAAAGAGTGGATACTATGAAAACA
 GCGCCATCAAGATATTAAGAGAGAGAGTGATTTACGAAAAAGTGACCTTACTCGTGCTTTCCAACTTCA
 AGACCACAGAAAATCAGGAAAACCTTCTGTGAGCCAGTGGGCTTTTTGCATGGAGAACATTTTGGGCTG
 AACTTACCATGGAGATCCCTCAGTTCGAATCTGGTAAACATAGACCAAAATGAAACGTTGAATACATGT
 CCAGCTCCAGAATATCCGCATTGAAAACCTGTACAAGAGGCTCATTCTACTCTAGTTGAAACTCTGTA
 CAGATACAGATCTGACCTGGAAATCATATTTAATGCCATTGACTGATCACTCAGGCTGATCTCCGTG
 GAAGAATTTCTGTCATGTGAAACTTTTTAGTCTCACTACAATGTTTACATTGATGATCCCAAGTCA
 ATAAGCTTGCCAACATAATGGACTTGAACAAAGATGGAAGCATTGACTTTAATGAGTTTTAAAGGCTTT
 CTATGTAGTGCATAGATATGAAGACTTGATGAAACCTGATGTCACCAACCTTGGC

ACGCGTACGCGGCCGCTCGAGCAGAAACTCATCTCAGAAGAGGATCTGGCAGCAAATGATATCCTGGATT
 ACAAGGATGACGACGATAAGGTTTAA

Protein Sequence:

>RC213104 representing NM_152224
 Red=Cloning site Green=Tags(s)

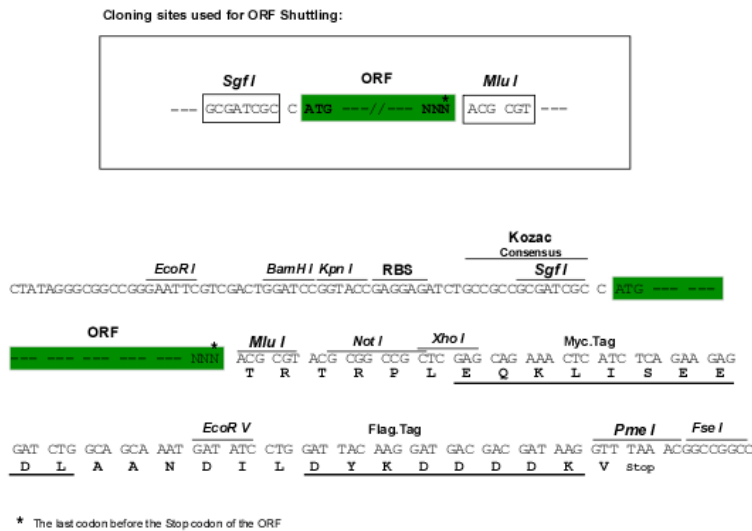
MGCSSTKTRRSDSLRAALI IQNWYRGYKARLKRQHYALTFQSI EYADEQQMQLSTFFSFMLENY
 THIHKEELELRNQSLESEQDMRDRWDYVDSIDVPDSYNGPRLQFPLTCTDIDLLLEAFKEQQILHAHYVL
 EVLFETKKVLKQMPNFTHIQTPSKEVTICGDLHGKLDLFLIFYKNGLPSEPNYPVFNDFVDRGKNSI
 EILMILCVSFLVYPNDLHLNRGNHEDFMMNLRYGFTKEILHXYKLHGKRIQLILEEFYAWLP IGTIVDNE
 ILVIHGGISETDLNLLHRVERNKMKSVLIPPETNRDHD TDSKHNKIIDILWSDPRGKNGCFPNTCRGG
 GCYFGPDVTSKILNKYQLKMLIRSHCEKPEGYEICHGDKVVTIFASNYE EGSNRGAYIKLCSGTTPRF
 FQYQVTKATCFQPLRQRVDTMENS A I K I L R R V I S R K S D L T R A F Q L Q D H R K S G K L S V S Q W A F C M E N I L G L
 N L P W R S L S S N L V N I D Q N G N V E Y M S S F Q N I R I E K P V Q E A H S T L V E T L Y R Y R S D L E I I F N A I D T D H S G L I S V
 E E F R A M W K L F S S H Y N V H I D D S Q V N K L A N I M D L N K D G S I D F N E F L K A F Y V V H R Y E D L M K P D V T N L G

TRTRPLEQKLISEEDLAANDILDYKDDDDKV

Chromatograms: https://cdn.origene.com/chromatograms/mk8070_d02.zip

Restriction Sites: SgfI-MluI

Cloning Scheme:



ACCN: NM_152224

ORF Size: 1875 bp

OTI Disclaimer: The molecular sequence of this clone aligns with the gene accession number as a point of reference only. However, individual transcript sequences of the same gene can differ through naturally occurring variations (e.g. polymorphisms), each with its own valid existence. This clone is substantially in agreement with the reference, but a complete review of all prevailing variants is recommended prior to use. [More info](#)

OTI Annotation: This clone was engineered to express the complete ORF with an expression tag. Expression varies depending on the nature of the gene.

Components: The ORF clone is ion-exchange column purified and shipped in a 2D barcoded Matrix tube containing 10ug of transfection-ready, dried plasmid DNA (reconstitute with 100 ul of water).

Reconstitution Method:

1. Centrifuge at 5,000xg for 5min.
2. Carefully open the tube and add 100ul of sterile water to dissolve the DNA.
3. Close the tube and incubate for 10 minutes at room temperature.
4. Briefly vortex the tube and then do a quick spin (less than 5000xg) to concentrate the liquid at the bottom.
5. Store the suspended plasmid at -20°C. The DNA is stable for at least one year from date of shipping when stored at -20°C.

RefSeq: [NM_152224.1](#), [NP_689410.1](#)

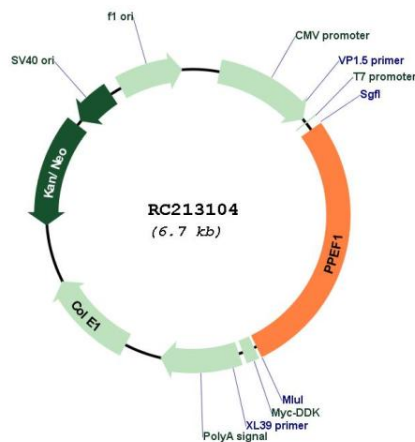
RefSeq Size: 2789 bp

RefSeq ORF: 1878 bp

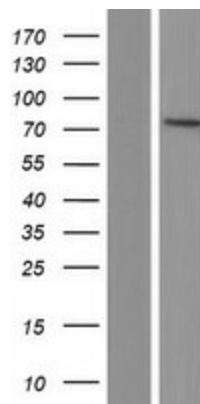
Locus ID: 5475
UniProt ID: [O14829](#)
Cytogenetics: Xp22.13
Protein Families: Druggable Genome, Phosphatase
MW: 72.5 kDa

Gene Summary: This gene encodes a member of the serine/threonine protein phosphatase with EF-hand motif family. The protein contains a protein phosphatase catalytic domain, and at least two EF-hand calcium-binding motifs in its C terminus. Although its substrate(s) is unknown, the encoded protein has been suggested to play a role in specific sensory neuron function and/or development. This gene shares high sequence similarity with the Drosophila retinal degeneration C (rdgC) gene. Several alternatively spliced transcript variants, each encoding a distinct isoform, have been described. [provided by RefSeq, Jul 2008]

Product images:



Circular map for RC213104



Western blot validation of overexpression lysate (Cat# [LY407703]) using anti-DDK antibody (Cat# [TA50011-100]). Left: Cell lysates from untransfected HEK293T cells; Right: Cell lysates from HEK293T cells transfected with RC213104 using transfection reagent MegaTran 2.0 (Cat# [TT210002]).