

Product datasheet for **RC213103**

M-CSF (CSF1) (NM_172210) Human Tagged ORF Clone

Product data:

Product Type:	Expression Plasmids
Product Name:	M-CSF (CSF1) (NM_172210) Human Tagged ORF Clone
Tag:	Myc-DDK
Symbol:	M-CSF
Synonyms:	CSF-1; MCSF
Mammalian Cell Selection:	Neomycin
Vector:	pCMV6-Entry (PS100001)
E. coli Selection:	Kanamycin (25 ug/mL)



[View online »](#)

ORF Nucleotide Sequence:

>RC213103 representing NM_172210
 Red=Cloning site Blue=ORF Green=Tags(s)

TTTTGTAATACGACTCACTATAGGGCGGCCGGAATTCGTCGACTGGATCCGGTACCGAGGAGATCTGCC
 GCC**CGCATCGCC**

ATGACCGCGCCGGCGCCGCCGGCGCTGCCCTCCCACGACATGGCTGGGCTCCCTGCTGTTGTTGGTCT
 GTCTCCTGGCGAGCAGGAGTATCACCGAGGAGGTGTCGGAGTACTGTAGCCACATGATTGGGAGTGGACA
 CCTGCAGTCTCTGCAGCGGCTGATTGACAGTCAGATGGAGACCTCGTGCCAAATTACATTTGAGTTTGT
 GACCAGGAACAGTTGAAAGATCCAGTGTGCTACCTTAAGAAGGCATTTCTCCTGGTACAAGACATAATGG
 AGGACACCATGCGCTTCAGAGATAACACCCCAATGCCATCGCCATTGTGCAGCTGCAGGAATCTCTTT
 GAGGCTGAAGAGCTGCTCACCAAGGATTATGAAGAGCATGACAAGGCCTGCGTCCGAATTTCTATGAG
 ACACCTCTCCAGTTGCTGGAGAAGGTCAAGAATGTCTTTAATGAAACAAAGAATCTCCTTGACAAGGACT
 GGAATATTTTCAGCAAGAACTGCAACAACAGCTTTGCTGAATGCTCCAGCCAAGATGTGGTGACCAAGCC
 TGATTGCAACTGCCTGTACCCCAAGCCATCCCTAGCAGTGACCCGGCCTCTGTCTCCCCTCATCAGCCC
 CTGCCCCCTCCATGGCCCTGTGGCTGGCTTGACCTGGGAGGACTCTGAGGGAACTGAGGGCAGCTCCC
 TCTTGCTGTTGAGCAGCCCTGCACACAGTGGATCCAGGCAGTGCCAAGCAGCGGCCACCCAGGAGCAC
 CTGCCAGAGCTTTGAGCCGCCAGAGACCCAGTTGTCAAGGACAGCACCATCGGTGGCTCACCACAGCCT
 CGCCCCTCTGTGGGGCCTTCAACCCCGGGATGGAGGATATTCTTGACTTGCAATGGGCACTAATTGGG
 TCCCAGAAGAAGCCTCTGGAGAGGCCAGTGAGATTCCCGTACCCCAAGGGACAGAGCTTTCCCCCTCCAG
 GCCAGGAGGGGCGAGCATGCAGACAGAGCCCGCCAGACCCAGCAACTTCTCTCAGCATCTTCTCCACTC
 CCTGCATCAGCAAAGGGCCAACAGCCGGCAGATGTAACGGCCATGAGAGGCAGTCCGAGGGATCCTCCA
 GCCCGCAGCTCCAGGAGTCTGTCTCCACCTGCTGGTGCCAGTGTATCCTGGTCTTGTGGCCGCTCGG
 AGGCCTCTTGTCTACAGGTGGAGGCGCGGAGCCATCAAGAGCCTCAGAGAGCGGATTCTCCCTTGAG
 CAACCAGAGGGCAGCCCTGACTCAGGATGACAGACAGGTGGAAGTCCAGT

ACGCGTACGCGGCCGCTCGAGCAGAACTCATCTCAGAAGAGGATCTGGCAGCAAATGATATCCTGGATT
 ACAAGGATGACGACGATAAGGTTTAA

Protein Sequence:

>RC213103 representing NM_172210
 Red=Cloning site Green=Tags(s)

MTAPGAAGRCPPTTWLGSLLLLVCLLASRSITEEVSEYCSHMIGSGHLQSLQRLIDSQMETSCQITFEFV
 DQEQLKDPVCYLKKAFLLVQDIMEDTMRFRDNTPNIAIAIVQLQELSLRLKSCFTKDYEEHDKACVRTFYE
 TPLQLLEKVKNVFNETKNLLDKDWNIFSKNCNNSFAECSSQDVVTKPDCNCLYPKAIPSSDPASVSPHQ
 LAPSMAPVAGLTWEDSEGTEGSSLLPGEQPLHTVDPGSAKQRPPRSTCQSFEPPETPVVKDSTIGGSPQP
 RPSVGFNPGMEDILDSAMGTNWVPEEASGEASEIPVPQGTTELSPSRPGGSMQTEPARPSNFLSASSPL
 PASAKGQPADVTGHERQSEGSSPQLQESVFHLLVPSVILVLLAVGGLLFYRWRRRSHQEPQRADSPL
 QPEGSPLTQDDRQVELPV

TRTRPLEQKLISEEDLAANDILDYKDDDDKV

Chromatograms:

https://cdn.origene.com/chromatograms/mk6159_b07.zip

Restriction Sites:

Sgfl-Mlul

Cloning Scheme:


ACCN: NM_172210

ORF Size: 1314 bp

OTI Disclaimer: The molecular sequence of this clone aligns with the gene accession number as a point of reference only. However, individual transcript sequences of the same gene can differ through naturally occurring variations (e.g. polymorphisms), each with its own valid existence. This clone is substantially in agreement with the reference, but a complete review of all prevailing variants is recommended prior to use. [More info](#)

OTI Annotation: This clone was engineered to express the complete ORF with an expression tag. Expression varies depending on the nature of the gene.

Components: The ORF clone is ion-exchange column purified and shipped in a 2D barcoded Matrix tube containing 10ug of transfection-ready, dried plasmid DNA (reconstitute with 100 ul of water).

Reconstitution Method:

1. Centrifuge at 5,000xg for 5min.
2. Carefully open the tube and add 100ul of sterile water to dissolve the DNA.
3. Close the tube and incubate for 10 minutes at room temperature.
4. Briefly vortex the tube and then do a quick spin (less than 5000xg) to concentrate the liquid at the bottom.
5. Store the suspended plasmid at -20°C. The DNA is stable for at least one year from date of shipping when stored at -20°C.

Note: Plasmids are not sterile. For experiments where strict sterility is required, filtration with 0.22um filter is required.

RefSeq: [NM_172210.2](#)

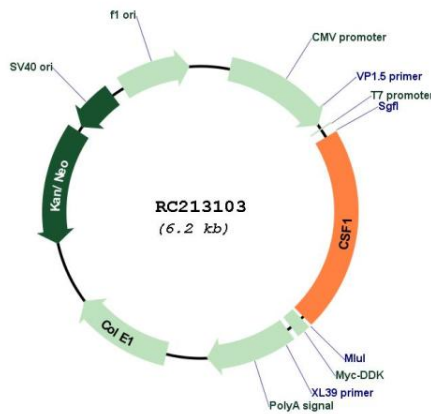
RefSeq Size: 1519 bp

RefSeq ORF: 1317 bp

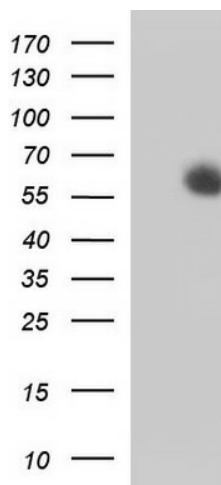
Locus ID: 1435

UniProt ID: [P09603](#)
Cytogenetics: 1p13.3
Protein Families: Druggable Genome, ES Cell Differentiation/IPS, Secreted Protein, Transmembrane
Protein Pathways: Cytokine-cytokine receptor interaction, Hematopoietic cell lineage
MW: 47.7 kDa
Gene Summary: The protein encoded by this gene is a cytokine that controls the production, differentiation, and function of macrophages. The active form of the protein is found extracellularly as a disulfide-linked homodimer, and is thought to be produced by proteolytic cleavage of membrane-bound precursors. The encoded protein may be involved in development of the placenta. Alternate splicing results in multiple transcript variants. [provided by RefSeq, Sep 2011]

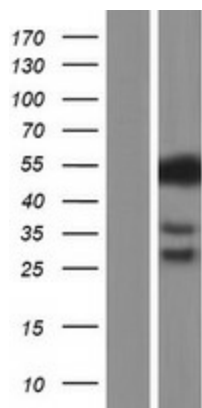
Product images:



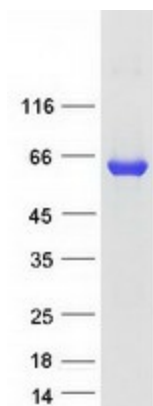
Circular map for RC213103



HEK293T cells were transfected with the pCMV6-ENTRY control (Cat# [PS100001], Left lane) or pCMV6-ENTRY CSF1 (Cat# RC213103, Right lane) cDNA for 48 hrs and lysed. Equivalent amounts of cell lysates (5 ug per lane) were separated by SDS-PAGE and immunoblotted with anti-CSF1 (Cat# [TA590307]). Positive lysates [LY403534] (100ug) and [LC403534] (20ug) can be purchased separately from OriGene.



Western blot validation of overexpression lysate (Cat# [LY403534]) using anti-DDK antibody (Cat# [TA50011-100]). Left: Cell lysates from untransfected HEK293T cells; Right: Cell lysates from HEK293T cells transfected with RC213103 using transfection reagent MegaTran 2.0 (Cat# [TT210002]).



Coomassie blue staining of purified CSF1 protein (Cat# [TP313103]). The protein was produced from HEK293T cells transfected with CSF1 cDNA clone (Cat# RC213103) using MegaTran 2.0 (Cat# [TT210002]).