

Product datasheet for RC213089

SALL4 (NM_020436) Human Tagged ORF Clone

Product data:

Product Type:	Expression Plasmids
Product Name:	SALL4 (NM_020436) Human Tagged ORF Clone
Tag:	Myc-DDK
Symbol:	SALL4
Synonyms:	DRRS; HSAL4; IVIC; ZNF797
Mammalian Cell Selection:	Neomycin
Vector:	pCMV6-Entry (PS100001)
E. coli Selection:	Kanamycin (25 ug/mL)
ORF Nucleotide Sequence:	>RC213089 ORF sequence Red=Cloning site Blue=ORF Green=Tags(s)

TTTTGTAATACGACTCACTATAGGGCGGCCGGAATTCGTCGACTGGATCCGGTACCGAGGAGATCTGCC
GCC**CGATCGCC**

ATGTCGAGGGCGAAGCAGGGCAAACCCAGCACATCAACTCGGAGGAGGACCAGGGCGAGCAGCAGCCG
AGCAGCAGACCCCGAGTTTGCAGATGCGGCCCCAGCGGCCCGCGGGGGAGCTGGGTGCTCCAGT
GAACCACCCAGGGAATGACGAGGTGGCGAGTGAGGATGAAGCCACAGTAAAGCGGCTTCGTCGGGAGGAG
ACGCACGTCTGTGAGAAATGCTGTGCGGAGTTCTCAGCATCTCTGAGTTCCTGGAACATAAGAAAAATT
GACTAAAAATCCACCTGTCCTCATCATGAATGACAGCGAGGGGCTGTGCCTTCAGAAGACTTCTCCGG
AGCTGTACTGAGCCACCAGCCCACAGTCCCGGCAGTAAGGACTGTCACAGGGAGAATGGCGGCAGCTCA
GAGGACATGAAGGAGAAGCCGGATGCGGAGTCTGTGGTGTACCTAAAGACAGAGACAGCCCTGCCACCCA
CCCCCAGGACATAAGCTATTTAGCCAAAGGCAAAGTGGCCAACACTAACGTGACCTTGCAGGCACTACG
GGGCACCAAGGTGGCGGTGAATCAGCGGAGCGCGGATGCACTCCCTGCCCCCGTGCCTGGTGCCAACAGC
ATCCCGTGGGTCTCGAGCAGATCTTGTGTCTGCAGCAGCAGCAGCTACAGCAGATCCAGCTCACCGAGC
AGATCCGCATCCAGGTGAACATGTGGGCTCCACGCCCTCCACTCAAGCGGGCAGGGGCCGACACTCT
GAAGACCTTGGGAGCCACATGTCTCAGCAGGTTTCTGCAGCTGTGGCTTTGCTCAGCCAGAAAGCTGGA
AGCCAAGGTCTGTCTGTGATGCCTTGAACAAGCCAAGCTACCTCAGCCAAACATCCCTTCTGCCACCA
GCTCCCTGTCCCCAGGGCTGGCACCTTCACTCTGAAGCCGGATGGGACCCGGGTGCTCCCGAACGTCAT
GTCCCGCTCCCGAGCGCTTTGCTTCTCAGGCCCGGGCTCGGTGCTCTTCCAGAGCCCTTTCTCCACT
GTGGCACTAGACACATCCAAGAAAGGGAAGGGGAAGCCACCGAACATCTCCGCGGTGGATGTCAAACCCA
AAGACGAGGGCGCCCTCTACAAGCACAAGTGAAGTACTGTAGCAAGTTTTTGGGACTGATAGCTCCTT
GCAGATCCACCTCCGCTCCCACTGGAGAGAGACCTTCGTGTGCTCTGTCTGTGGTATCGTTCACC
ACCAAGGGCAACCTCAAGGTGCACTTTACCGACATCCCCAGGTGAAGGCAAACCCAGCTGTTTGCCG
AGTTCCAGGACAAAGTGGCGGCCGCAATGGCATCCCCTATGCACTCTGTACCTGACCCCATAGATGA
ACCGAGTCTTTTGTAGACAGCAAACCTGTCCTTGTACCACCTCTGTAGGGCTACCTCAGAATCTTTCT



[View online »](#)

TCGGGGACTAATCCCAAGGACCTCACGGGTGGCTCCTTGCCCGGTGACCTGCAGCCTGGGCCTTCTCCAG
 AAAGTGAGGGTGGACCCACACTCCCTGGGGTGGGACAACTATAATTCCCAAGGGCTGGTGGCTTCCA
 AGGGAGTGGGACCCCTGAGCCAGGGTCAGAGACCTGAAATTGCAGCAGTTGGTGGAGAATTGACAAG
 GCCACCACTGATCCCAACGAATGTCTCATTTGCCACCGAGTCTTAAGCTGTGAGAGCTCCCTCAAGATGC
 ATTATCGACCCACACCGGGGAGAGACCGTTCCAGTGTAAAGATCTGTGGCCGAGCCTTTTCTACCAAAGG
 TAACCTGAAGACACACCTTGGGGTTCACGAACCAACACATCCATTAAGACGCAGCATTGTCGCCCATC
 TGCCAGAAGAAGTCACTAATGCCGTGATGCTGCAGCAACATATTCGGATGCACATGGCCGGTCAATTG
 CCAACACGCCCTGCCAGAGAATCCCTGTGACTTTACGGGTTCTGAGCCAATGACCGTGGGTGAGAACGG
 CAGCACCGGCGCTATCTGCCATGATGATGTCATCGAAAGCATCGATGTAGAGGAAGTCAGCTCCCAGGAG
 GCTCCCAGCAGCTCCTCAAGGTCACCCAGCCTCTTCCAGCATCCACTCGGCATCACCCAGCTAGGGT
 TTGCCATGATGGCTTCTTAGATGCCCCAGGAAAGTGGGTCTGCCCTTTTAACTGCAGCGCCAGGG
 CAGCAGAGAAAACGGTTCGGTGGAGAGCGATGGCTTGACCAACGACTCATCTCGCTGATGGGAGACCAG
 GAGTATCAGAGCCGAAGCCAGATATCCTGAAACCACATCCTCCAGGCACTCTCCCGGCCAATAGTC
 AAGCCGAAAGCATCAAGTCAAAGTCTCCGATGCTGGGAGCAAAGCAGAGAGCTCCGAGAACAGCCGCAC
 TGAGATGGAAGGTCGGAGCAGTCTCCCTCCACGTTTATCCGAGCCCCGCGACCTATGTCAAGGTTGAA
 GTTCTGGCACATTTGTGGGACCTCGACATTGTCCCCAGGGATGACCCCTTTGTAGCAGCCAGCCAC
 GCCGACAGGCCAAGCAACATGGCTGCACACGGTGTGGGAAGAATTCTCCTCTGCTAGCGCTCTTACAGT
 CCACGAGCGGACTCACACTGGAGAGAAGCCTTTTGTGTGCAACATTTGTGGGCGAGCTTTTACCACAAA
 GGCAACTTAAAGGTTCACTACATGACACACGGGGCAACAATAACTCAGCCCGCGTGGAAAGGAAAGTTGG
 CCATCGAGAACACCATGGCTCTGTTAGGTACGGACGGAAAAAGAGTCTCAGAAATCTTTCCCAAGGAAAT
 CCTGGCCCTTCAGTGAATGTGGACCTGTTGTGTGGAACAGTACACCAGCATGCTCAATGGCGGTCTG
 GCCGTGAAGACCAATGAGATCTCTGTGATCCAGAGTGGGGGGTCTACCTCCCGGTTTCTTGGGGG
 CCACCTCCGTTGTGAATAACGCCACTGTCTCAAGATGGATGGCTCCAGTCGGGTATCAGTGCAGATGT
 GGAAAAACCAAGTGCTACTGACGGCGTTCCCAAACACCAGTTTCTCACTTCTGGAAGAAAAACAAGATT
 GGGTCAGC

ACGCGTACGCGGCCGCTCGAGCAGAACTCATCTCAGAAGAGGATCTGGCAGCAATGATATCCTGGATT
 ACAAGGATGACGACGATAAGGTTTAA

Protein Sequence:

>RC213089 protein sequence
 Red=Cloning site Green=Tags(s)

MSRRKQAKPQHINSEEDQGEQQPQQQTPPEFADAAPAAPAAGELGAPVNHGPNDEVA SEDEATVKRLRREE
 THVCEKCCAEFFISSEFLEHKNCTKNPPVLIMNDSEGPVPSDFSGAVLSHQPTSPGSKDCHRENGSS
 EDMKEKPDASVVYLKTE TALPPTQDISYLAKGKVANTNVTLQALRGTKVAVNQRSADALPAPVPGANS
 IPWVLEQILCLQQQLQQIQLTEQIRIQVNMWASHALHSSGAGADTLKTLGSHMSQQVSAVALLSQKAG
 SQGLSLDALKQAKLPHANIPSATSSLSPGLAPFTLKPDPTRVLPNVMSRLPSALLPQAPGSVLFQSPFST
 VALDTSKKGKGPPIISAVDVKPKDEAALYKHCKYCSKVFGTSSQLIHLRSHTGERPFVCSVCGRHFT
 TKGNLKVHFHRHPQVKANPQLFAEFQDKVAAGNGIPYALSVDPIDEPSSLDSKPVLVTTSVGLPQNL
 SGTNPKDLTGSSLPGLQPSPSEEGGPTLPGVGNYN SPRAGGFQGSSTPEPGSETLKLQQLVENIDK
 ATDTPNECLICHRVLSQSSSLKMHYRHTGERPFQCKICGRAFFSTKGNLKTHLGVHRTNTSIKTQHSCPI
 CQKKFTNAVMLQQHIRMHMGQIPNTPLPENPCDFTGSEPM TVGENGSTGAICHDDVIESIDVEEVSSQE
 APSSSSKVPTPLPSIHSASPTLGFAMMASLDAPGKVGPAFNLQRQGSRENGSVESDGLTNDSSSLMGDQ
 EYQSRSPDILETTSFQALSPANSQAESIKSKSPDAGSKAESSENSRTEMEGRSSLPTFIRAPPTYVKVE
 VPGTFVGPSTLSPGMTPLLAQPRRQAKQHGC TRCGKNFSSASALQIHERHTHTGEKPFVCNICGRAFTTK
 GNLKVHYMTHGANNSARRGRKLAIENTMALLGTDGKRVSEIFPKEILAPSVNVDPVWVWNYTSM LNGL
 AVKTNIEISVIQSGGVPTLPVSLGATSVVNNATVSKMDGSSQSGISADVEKPSATDGVPKHQFPHFLEENKI
 AVS

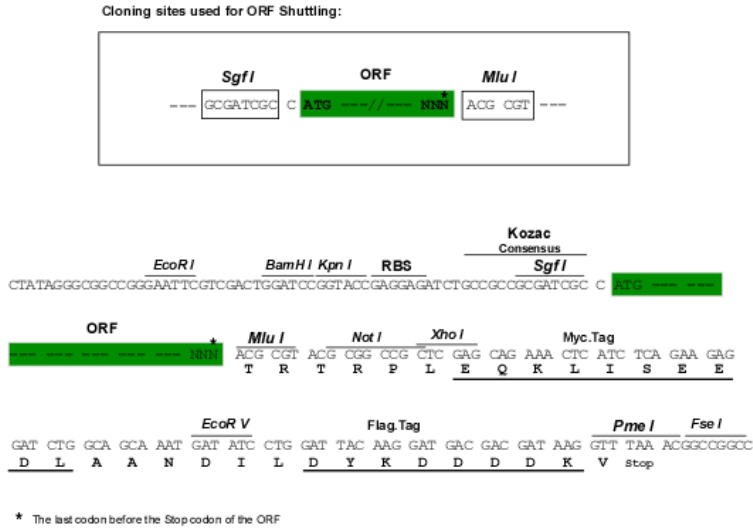
TRTRPLEQKLISEEDLAANDILDYKDDDDKV

Chromatograms:

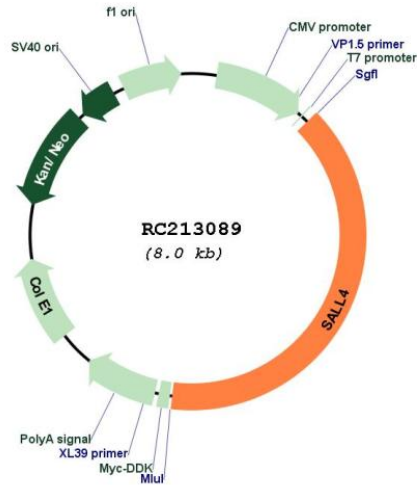
https://cdn.origene.com/chromatograms/mk6602_e09.zip

Restriction Sites: SgfI-MluI

Cloning Scheme:



Plasmid Map:



ACCN: NM_020436

ORF Size: 3159 bp

OTI Disclaimer: Due to the inherent nature of this plasmid, standard methods to replicate additional amounts of DNA in E. coli are highly likely to result in mutations and/or rearrangements. Therefore, OriGene does not guarantee the capability to replicate this plasmid DNA. Additional amounts of DNA can be purchased from OriGene with batch-specific, full-sequence verification at a reduced cost. Please contact our customer care team at custsupport@origene.com or by calling 301.340.3188 option 3 for pricing and delivery.

The molecular sequence of this clone aligns with the gene accession number as a point of reference only. However, individual transcript sequences of the same gene can differ through naturally occurring variations (e.g. polymorphisms), each with its own valid existence. This clone is substantially in agreement with the reference, but a complete review of all prevailing variants is recommended prior to use. [More info](#)

OTI Annotation: This clone was engineered to express the complete ORF with an expression tag. Expression varies depending on the nature of the gene.

Components: The ORF clone is ion-exchange column purified and shipped in a 2D barcoded Matrix tube containing 10ug of transfection-ready, dried plasmid DNA (reconstitute with 100 ul of water).

Reconstitution Method:

1. Centrifuge at 5,000xg for 5min.
2. Carefully open the tube and add 100ul of sterile water to dissolve the DNA.
3. Close the tube and incubate for 10 minutes at room temperature.
4. Briefly vortex the tube and then do a quick spin (less than 5000xg) to concentrate the liquid at the bottom.
5. Store the suspended plasmid at -20°C. The DNA is stable for at least one year from date of shipping when stored at -20°C.

RefSeq: [NM_020436.5](#)

RefSeq Size: 3487 bp

RefSeq ORF: 3162 bp

Locus ID: 57167

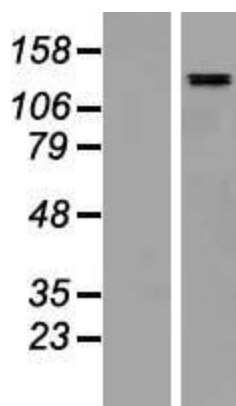
UniProt ID: [Q9UJQ4](#)

Cytogenetics: 20q13.2

Protein Families: ES Cell Differentiation/IPS, Stem cell - Pluripotency

MW: 112.2 kDa

Gene Summary: This gene encodes a zinc finger transcription factor thought to play a role in the development of abducens motor neurons. Defects in this gene are a cause of Duane-radial ray syndrome (DRRS). Alternative splicing results in multiple transcript variants encoding different isoforms. [provided by RefSeq, Dec 2015]

Product images:

Western blot validation of overexpression lysate (Cat# [LY412485]) using anti-DDK antibody (Cat# [TA50011-100]). Left: Cell lysates from untransfected HEK293T cells; Right: Cell lysates from HEK293T cells transfected with RC213089 using transfection reagent MegaTran 2.0 (Cat# [TT210002]).