

## Product datasheet for **RC213088**

### ZNF41 (NM\_153380) Human Tagged ORF Clone

#### Product data:

Product Type:	Expression Plasmids
Product Name:	ZNF41 (NM_153380) Human Tagged ORF Clone
Tag:	Myc-DDK
Symbol:	ZNF41
Synonyms:	MRX89
Mammalian Cell Selection:	Neomycin
Vector:	pCMV6-Entry (PS100001)
E. coli Selection:	Kanamycin (25 ug/mL)



[View online »](#)

ORF Nucleotide  
Sequence:

>RC213088 representing NM\_153380  
Red=Cloning site Blue=ORF Green=Tags(s)

TTTTGTAATACGACTCACTATAGGGCGGCCGGGAATTCGTCGACTGGATCCGGTACCGAGGAGATCTGCC  
GCC**CGGATCGCC**

ATGGCAGCTAATGGGACTCTCCCCATGGTCCCCGGCCCTGGCTGCAGAGGGACGTGGCAGCTCATGTG  
AGGCTTCAGTGTCATTTGAGGACGTGACTGTGGACTTCAGCAAGGAGGAGTGGCAGCACTTGGACCTGC  
CCAGAGACGCCTGTACTGGGATGTGACACTAGAGAACTACAGCCACCTGCTCTCAGTGGGGTACCAAATT  
CCCAAGTCAGAGGCTGCCTTCAAGTTGGAGCAAGGAGAGGGGCCATGGATGCTGGAGGGGAAGCCCCAC  
ATCAGAGCTGTTCAAGTGAGGCTATTGGGAAAATGCAGCAACAGGGAAATTCCTGGAGGAATTTCTTCCA  
CTGTGAGAGATTTGATCAACCCATAGGAGAAGATTCATTATGTTCTATTTTAGAAGAAGTGTGGCAAGAT  
AATGACCAGCTAGAGCAACGTGAGGAAAACCAGAATAACCTTTTAAAGTCATGTGAAAGTATTGATTAAGG  
AGAGGGGCTATGAACATAAAAAACATTGAAAAAATAATTCATGTGACTACCAAGCTTGTTCCTTCAATTA  
AAGACTCCATAACTGTGACACAATTTTGAAGCATACTTTAAACTCACATAATCATAATAGAAACAGTGCA  
ACAAAGAACCTTGGCAAGATTTTGGAAATGGTAAACAATTTCCCCATAGCCCTTCTCTACTAAGAATG  
AGAATGCTAAAACAGGAGCAAATTCCTGTGAACATGACCACTATGAAAAACATCTCAGCCACAAAACAGC  
TCCCACCCACCATCAGAAAATTCATCCTGAGGAGAAGCTTTATGTGTGACTGAATGTGTAATGGGCTTC  
ACTCAGAAGTCACATCTGTTGAGCATCAGAGAATTCATGCTGGAGAAAAGTCCCGTGAATGTGACAAAA  
GCAACAAAGTCTTCCCCAGAAAACCCAGGTTGATGTACATCCAAGTGTTTATACAGGAGAAAAACCTA  
TCTGTGACTCAATGTGGGAAAGTCTTTACCCTCAAATCAAACCTCATTACACATCAAAAAATTCATACC  
GGGCAGAAAACCTACAAATGCAGTGAATGTGAAAAGCCTTTTCCAGAGATCAGACCTCTTTAGACATC  
TGAGAATTCATACAGGAGAAAAACCTTATGAATGCAGTGAATGTGAAAAGGCTTCTCCAGAACTCAGA  
CCTCAGTATACATCAGAAAACCTATACCGGAGAGAAAACACTATGAATGCAATGAATGTGGGAAGGCTTTC  
ACAAGAAAATCAGCACTCAGGATGCATCAGAGAATCCACACGGGAGAGAAAACCTTATGTATGCGCTGACT  
GTGGGAAGGCCTTCATCCAGAAATCACATTTCAACACACATCAGAGAATTCATACTGGAGAAAAGCCGTA  
TGAATGCAGTGAATGTGGGAAATCCCTTCACTAAGAAGTCACAACTCCATGTGCATCAAAGAATTCACACC  
GGAGAGAAAACCTATATATGTACAGAATGTGAAAAGGCTTCACTCACAGGACAAAACCTCACCACACATC  
AGAAAACCTACTACTGGGAAAAACCTATATGTGTGCTGAATGTGAAAAGGCTTTTACTGACCAGTCAAA  
TCTCATTAAACACCAGAAAACCTCACACTGGAGAGAAAACCTATAAGTGAATGGCTGTGGAAAAGCCTTC  
ATATGGAAGTCGCGCCTCAAAATACATCAGAAAATCTCATATTGGAGAGAGACACTATGAATGCAAGGACT  
GCGGGAAAAGCCTTCATCCAGAAATCAACACTAAGCGTGCATCAGAGAATCCATACAGGAGAGAAAACCGTA  
CGTTTGTCTGAATGCGGGAAGGCTTTATCCAGAAAATCGCACTTCATTGCGCATCATAGAATCCATACT  
GGAGAGAAGCCTTATGAATGCAGCGACTGTGGGAAATGCTTCACTAAGAAGTCACAACTCCGTGTGCATC  
AGAAAAATCCACACAGGTGAGAAGCCCAATATATGTGCTGAATGTGAAAAGGCTTCACTGACCGATCAAA  
TCTCATAACACATCAGAAAATCCACACTAGGGAGAAAACCTATGAATGTGGTGAATGCGGGAAAACCTTC  
ACCTGGAAGTCACGCCTCAATATACATCAGAAGTCTCATACTGGAGAAAAGACACTATGAATGTAGTAAAT  
GTGGGAAAAGCTTTCATCCAGAAAAGCCACACTAAGTATGCATCAGATAATTCATACAGGAAAAGAACTTA  
TGCTTGTACAGAATGTGAGAAGGCTTTACTGACAGATCGAATCTCATTAAACACCAGAAAATGCATAGT  
GGAGAAAACGCTATAAAGCCAGTGAC

**ACGCGT**ACGCGGCCGCTCGAGCAGAAAACCTCATCTCAGAAGAGGATCTGGCAGCAAATGATATCCTGGATT  
ACAAGGATGACGACGATAAGGTTTAA

**Protein Sequence:** >RC213088 representing NM\_153380  
Red=Cloning site Green=Tags(s)

MAANGDSPWPALAAEGRGSSCEASVSFEDVTVDFSKEEWQHLDPQRRLYWDVTLENYSHLLSVGYQI  
PKSEAAFKLEQGEGPWMLEGEAPHQSCSGEAIQKMQQGGIPGGIFFHCERFDQPIGEDSLCSILEELWQD  
NDQLEQRQENQNNLLSHVKVLIKERGYEHKNIKIEIIHVTTKLVPSTIKRLHNCDTILKHTLNSHNHRNSA  
TKNLGKIFGNGNNFPHSPSSTKNENAKTGANSCEHDHYEKHLSHKQAPTHHQKIHPEEKL YVCTECVMGF  
TQKSHLFEHQRIHAGEKSRECDKSNKVFQKQVQVDVHPSVYTGEKPYLCTQCGKVFTLKSNIHTQKIHT  
GQKPYKCSECGKAFFQRSDFRHLRIHTGEKPYECSECGKGFSDLSIHQKTHHTGEKHYESNECGKAF  
TRKSALRMHQRIHTGEKPYVCADCGKAFIQKSHFNTHQRIHTGEKPYECSDCGKSFTKKSQLHVHQRIHT  
GEKPYICTECGVFTHRTNLTHQKTHHTGEKPYMCAECGKAFTDQSNLIKHKTHHTGEKPYKNGCGKAF  
IWKSRLLKIHQKSHIGERHYECKDCGKAFIQKSTLSVHQRIHTGEKPYVCECGKAFIQKSHFIAHHRHT  
GEKPYECSDCGKCFTKKSQLRVHQKIHTGEKPNICAECGKAFTDRSNLIHTQKIHTREKPYECGDCGKTF  
TWKSRLLNIHQKSHHTGERHYECKDCGKAFIQKATLSMHQIHTGKKPYACTECQKAFDRSNLIKHKMHS  
GEKRYKASD

TRTRPLEQKLISEEDLAANDILDYKDDDDKV

**Chromatograms:** [https://cdn.origene.com/chromatograms/mk6324\\_d08.zip](https://cdn.origene.com/chromatograms/mk6324_d08.zip)

**Restriction Sites:** Sgfl-Mlul

**Cloning Scheme:**


**ACCN:** NM\_153380

**ORF Size:** 2337 bp

**OTI Disclaimer:** The molecular sequence of this clone aligns with the gene accession number as a point of reference only. However, individual transcript sequences of the same gene can differ through naturally occurring variations (e.g. polymorphisms), each with its own valid existence. This clone is substantially in agreement with the reference, but a complete review of all prevailing variants is recommended prior to use. [More info](#)

**OTI Annotation:** This clone was engineered to express the complete ORF with an expression tag. Expression varies depending on the nature of the gene.

**Components:** The ORF clone is ion-exchange column purified and shipped in a 2D barcoded Matrix tube containing 10ug of transfection-ready, dried plasmid DNA (reconstitute with 100 ul of water).

**Reconstitution Method:**

1. Centrifuge at 5,000xg for 5min.
2. Carefully open the tube and add 100ul of sterile water to dissolve the DNA.
3. Close the tube and incubate for 10 minutes at room temperature.
4. Briefly vortex the tube and then do a quick spin (less than 5000xg) to concentrate the liquid at the bottom.
5. Store the suspended plasmid at -20°C. The DNA is stable for at least one year from date of shipping when stored at -20°C.

**RefSeq:** [NM\\_153380.3](#)

**RefSeq Size:** 3406 bp

**RefSeq ORF:** 2340 bp

**Locus ID:** 7592

**UniProt ID:** [P51814](#)

**Cytogenetics:** Xp11.3

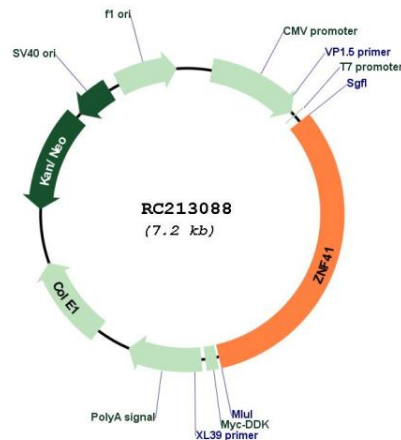
**Domains:** KRAB, zf-C2H2

**Protein Families:** Transcription Factors

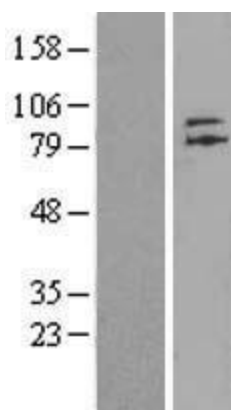
**MW:** 88.9 kDa

**Gene Summary:** This gene encodes a protein that contains KRAB-A and KRAB-B domains multiple zinc finger DNA binding motifs and finger linking regions characteristic of the Kruppel family. An initial study suggested that this gene may be associated with X-linked cognitive disability, but a later study has called this finding into question (PMID:23871722).[provided by RefSeq, Apr 2016]

### Product images:



Circular map for RC213088



Western blot validation of overexpression lysate (Cat# [LY407090]) using anti-DDK antibody (Cat# [TA50011-100]). Left: Cell lysates from untransfected HEK293T cells; Right: Cell lysates from HEK293T cells transfected with RC213088 using transfection reagent MegaTran 2.0 (Cat# [TT210002]).