

## Product datasheet for **RC213084**

### PGAP2 (NM\_014489) Human Tagged ORF Clone

#### Product data:

Product Type:	Expression Plasmids
Product Name:	PGAP2 (NM_014489) Human Tagged ORF Clone
Tag:	Myc-DDK
Symbol:	PGAP2
Synonyms:	CWH43-N; FRAG1; HPMRS3; MRT17; MRT21
Mammalian Cell Selection:	Neomycin
Vector:	pCMV6-Entry (PS100001)
E. coli Selection:	Kanamycin (25 ug/mL)
ORF Nucleotide Sequence:	>RC213084 representing NM_014489 Red=Cloning site Blue=ORF Green=Tags(s)

TTTTGTAATACGACTCACTATAGGGCGGCCGGAATTCGTCGACTGGATCCGGTACCGAGGAGATCTGCC  
GCC**CGCATCGC**

ATGTACCAGGTCCCCTACCACTGGATCGGGATGGGACCCTGGTACGGCTCCGCTTCACCATGGTGGCCC  
TGGTCACGGTCTGCTGTCCACTTGTGCGCTTCCTCTTCTGCATCCTCTGGTCCCTGCTCTTCCACTTCAA  
GGAGACAACGGCCACACACTGTGGGGCCACGCCCTGCAGGATGTTCTCTGCGGCTCCAGCCTTTGGAC  
CCCGATGGGACCTTGTCCGGCTTCGCTTCACAGCCATGGTCTGGTGGGCCATCACTTTCTGTGTTTCG  
GCTTCTTCTTCTGCATCATCTGGTCCCTGGTGTCCACTTTGAGTACACGGTGGCCACTGACTGTGGGGT  
GCCCAATTACCTGCCCTCGGTGAGCTCAGCCATCGGCGGGGAGGTGCCAGCGCTACGTGTGGCGTTTC  
TGCATCGGCCTGCACTCGGCGCCTCGCTTCTTGGTGGCCTTCGCCTACTGGAACCACTACCTCAGCTGCA  
CCTCCCCGTGTTCTGCTATCGCCCGCTCTGCCGCTCAACTTCGGCCTCAATGTCGTGGAGAACCTCGC  
GTTGCTAGTGCTCACTTATGTCTCCTCCTCCGAGGACTTACCATCCACGAAAATGCTTTTATTGTGTTTC  
ATTGCCTCATCCCTCGGGCACATGCTCCTCACCTGCATTCTCTGGCGGTTGACCAAGAAGCACACAGTAA  
GTCAGGAGGATCGCAAGTCCTACAGCTGGAAACAGCGGCTCTTCATCATCACTTCATCTCCTTCTTCTC  
GGCGTGGCTGTCTACTTTCGGCACAACATGATTGTGAGGCTGGAGGTACACCATCTTGCCATCCTG  
GAGTACACTGTTGTCTTAACCAACATGGCGTTCCACATGACGGCCTGGTGGGACTTCGGGAACAAGGAGC  
TGCTCATAACCTCTCAGCCTGAGGAAAAGCGATTTC

**ACGCGT**ACGCGGCCGCTCGAGCAGAACTCATCTCAGAAGAGGATCTGGCAGCAATGATATCCTGGATT  
ACAAGGATGACGACGATAAGGTTTAA



[View online »](#)

**Protein Sequence:** >RC213084 representing NM\_014489  
 Red=Cloning site Green=Tags(s)

MYQVPLPLDRDGLVRLRFTMVALVTCCPLVAFILFCILWSLLFHFKEETATHCGATPCRMFSAASQPLD  
 PDGTLFRLRFTAMVWVAITFPVFGFFFCIIWSLVFHFETVATDCGVPNYLPSVSSAIGGEVPQRYVWRF  
 CIGLHSAPRFLVAFAYWNHYLSCTSPSCYRPLCRLNFGNVENLALLVTYVSSSEDFTHENAFIVF  
 IASSLGHMLLTCLWRLTKKHTVSQEDRKSYSWKQRLFIINFISFFSALAVYFRHNMCEAGVYITIFAIL  
 EYTVVLTNMAFHMTAWWDFGNKELLITSQPEEKRF

TRTRPLEQKLISEEDLAANDILDYKDDDDKV

**Chromatograms:** [https://cdn.origene.com/chromatograms/mk8008\\_h12.zip](https://cdn.origene.com/chromatograms/mk8008_h12.zip)

**Restriction Sites:** SgfI-MluI

**Cloning Scheme:**



**ACCN:** NM\_014489

**ORF Size:** 945 bp

**OTI Disclaimer:** The molecular sequence of this clone aligns with the gene accession number as a point of reference only. However, individual transcript sequences of the same gene can differ through naturally occurring variations (e.g. polymorphisms), each with its own valid existence. This clone is substantially in agreement with the reference, but a complete review of all prevailing variants is recommended prior to use. [More info](#)

**OTI Annotation:** This clone was engineered to express the complete ORF with an expression tag. Expression varies depending on the nature of the gene.

**Components:** The ORF clone is ion-exchange column purified and shipped in a 2D barcoded Matrix tube containing 10ug of transfection-ready, dried plasmid DNA (reconstitute with 100 ul of water).

**Reconstitution Method:**

1. Centrifuge at 5,000xg for 5min.
2. Carefully open the tube and add 100ul of sterile water to dissolve the DNA.
3. Close the tube and incubate for 10 minutes at room temperature.
4. Briefly vortex the tube and then do a quick spin (less than 5000xg) to concentrate the liquid at the bottom.
5. Store the suspended plasmid at -20°C. The DNA is stable for at least one year from date of shipping when stored at -20°C.

**RefSeq:** [NM\\_014489.4](#)

**RefSeq Size:** 2040 bp

**RefSeq ORF:** 948 bp

**Locus ID:** 27315

**UniProt ID:** [Q9UHI9](#)

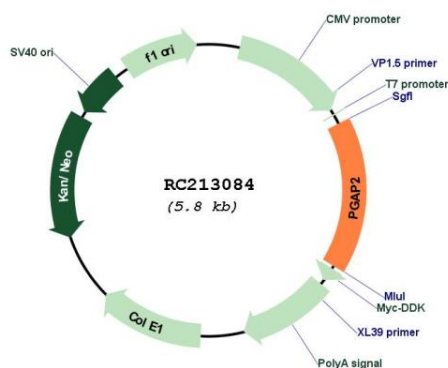
**Cytogenetics:** 11p15.4

**Protein Families:** Druggable Genome, Transmembrane

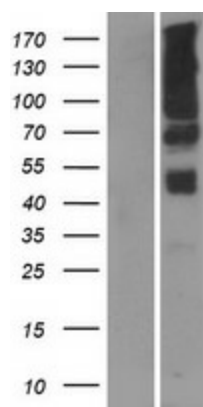
**MW:** 36.2 kDa

**Gene Summary:** The protein encoded by this gene plays a role in the maturation of glycosylphosphatidylinositol (GPI) anchors on GPI-anchored proteins. Mutations in this gene are associated with an autosomal recessive syndrome characterized by hyperphosphatasia and intellectual disability. [provided by RefSeq, Jul 2017]

## Product images:



Circular map for RC213084



Western blot validation of overexpression lysate (Cat# [LY415247]) using anti-DDK antibody (Cat# [TA50011-100]). Left: Cell lysates from untransfected HEK293T cells; Right: Cell lysates from HEK293T cells transfected with RC213084 using transfection reagent MegaTran 2.0 (Cat# [TT210002]).