

Product datasheet for **RC213078**

RIPPLY3 (NM_018962) Human Tagged ORF Clone

Product data:

Product Type: Expression Plasmids
Product Name: RIPPLY3 (NM_018962) Human Tagged ORF Clone
Tag: Myc-DDK
Symbol: RIPPLY3
Synonyms: DSCR6
Mammalian Cell Selection: Neomycin
Vector: pCMV6-Entry (PS100001)
E. coli Selection: Kanamycin (25 ug/mL)
ORF Nucleotide Sequence: >RC213078 representing NM_018962
Red=Cloning site Blue=ORF Green=Tags(s)

TTTTGTAATACGACTCACTATAGGGCGGCCGGAATTCGTCGACTGGATCCGGTACCGAGGAGATCTGCC
GCC**CGATCGCC**

ATGGAGCCCAAGCGCGCCGGAGCCCGGAAGGCGGGGGCGGGCTGTCACTGCCCCGGGACGCTC
CCTGGAGGCTCCGCCACCGCGGGCCGGAGAGCCCGCGCGTGGCGACCTTGGATCCAGACACCTGG
AGATGCTGAGCTGACCAGAACTGGAAGGCCGTTGAACCTAGGGCTGACCAACACTTTGGATCAAAG
GGAGCCTTTGGTTTCAGCATCCTGTAAGAGTCTATTTACCCATGTCAAAGCGTCAAGAATACCTGCGGA
GTTCCGGGAGCAAGTACTGGCCAGTTTCCAGTGCAAGCCACGATTGACTTCTACGACGATGAGTCTAC
TGAGTCTGCTCCGAAGCTGAAGAGCCAGAGGAAGGACCCACCCTCCATCTTCTGCCCCAGGAGGTG
GGAGGTGGCAGGAAAATGGCCCAGGGGAAAGGGCAGAGACCAGGGCATCAACCAAGGGCAGCGATCCT
CAGGAGGGGTGACCACTGGGGGAGGGTCCGCTCCCTCAAGGTGTCTCCTCAAGGGGTGCAAGTGTCTC
TCATCCAAA

ACGCGTACGCGGCCGCTCGAGCAGAACTCATCTCAGAAGAGGATCTGGCAGCAATGATATCCTGGATT
ACAAGGATGACGACGATAAGGTTTAA

Protein Sequence: >RC213078 representing NM_018962
Red=Cloning site Green=Tags(s)

MEPEAAAGARKARGRGCHCPGDAPWRPPPPRGPEPAPWRPWIQTPGDAELTRTGRPLEPRADQHTFGSK
GAFGFQHPVRVYLPMSKRQEYLRSSGEQVLASFVQATIDFYDDESTESASEEPEEGPPLHLLPQEV
GGRQENPGGKGRDQGINQGQRSSGGDHWEGPLPQGVSSRGGKCSSK

TRTRPLEQKLISEEDLAANDILDYKDDDDKV



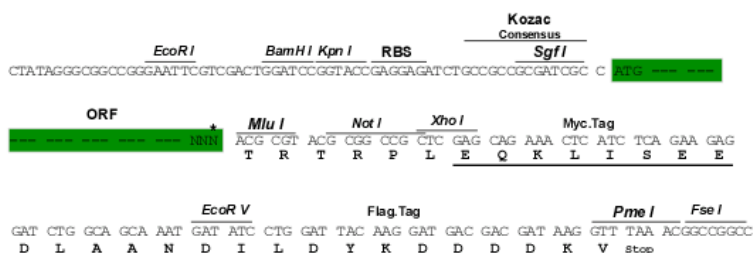
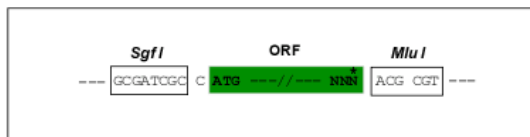
[View online »](#)

Chromatograms: https://cdn.origene.com/chromatograms/mk8024_e12.zip

Restriction Sites: SgfI-MluI

Cloning Scheme:

Cloning sites used for ORF Shuttling:



* The last codon before the Stop codon of the ORF

ACCN: NM_018962

ORF Size: 570 bp

OTI Disclaimer: The molecular sequence of this clone aligns with the gene accession number as a point of reference only. However, individual transcript sequences of the same gene can differ through naturally occurring variations (e.g. polymorphisms), each with its own valid existence. This clone is substantially in agreement with the reference, but a complete review of all prevailing variants is recommended prior to use. [More info](#)

OTI Annotation: This clone was engineered to express the complete ORF with an expression tag. Expression varies depending on the nature of the gene.

Components: The ORF clone is ion-exchange column purified and shipped in a 2D barcoded Matrix tube containing 10ug of transfection-ready, dried plasmid DNA (reconstitute with 100 ul of water).

Reconstitution Method:

1. Centrifuge at 5,000xg for 5min.
2. Carefully open the tube and add 100ul of sterile water to dissolve the DNA.
3. Close the tube and incubate for 10 minutes at room temperature.
4. Briefly vortex the tube and then do a quick spin (less than 5000xg) to concentrate the liquid at the bottom.
5. Store the suspended plasmid at -20°C. The DNA is stable for at least one year from date of shipping when stored at -20°C.

RefSeq: [NM_018962.3](#)

RefSeq Size: 2262 bp

RefSeq ORF: 573 bp

Locus ID: 53820

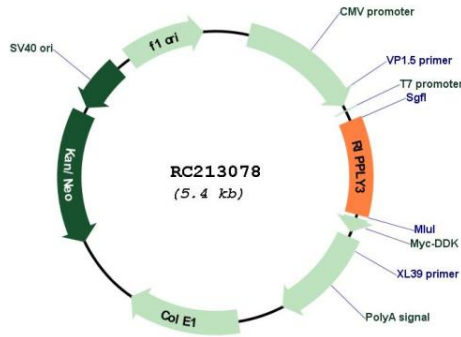
UniProt ID: [P57055](#)

Cytogenetics: 21q22.13

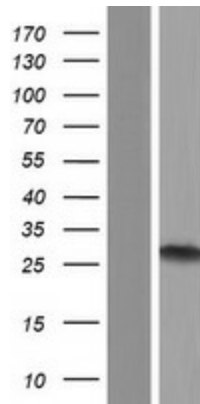
MW: 20.2 kDa

Gene Summary: Acts as a transcriptional corepressor. Negative regulator of the transcriptional activity of TBX1. Plays a role in the development of the pharyngeal apparatus and derivatives (By similarity).[UniProtKB/Swiss-Prot Function]

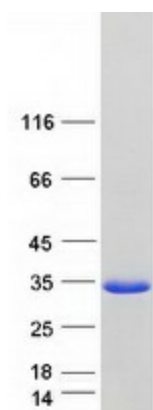
Product images:



Circular map for RC213078



Western blot validation of overexpression lysate (Cat# [LY412850]) using anti-DDK antibody (Cat# [TA50011-100]). Left: Cell lysates from untransfected HEK293T cells; Right: Cell lysates from HEK293T cells transfected with RC213078 using transfection reagent MegaTran 2.0 (Cat# [TT210002]).



Coomassie blue staining of purified RIPPLY3 protein (Cat# [TP313078]). The protein was produced from HEK293T cells transfected with RIPPLY3 cDNA clone (Cat# RC213078) using MegaTran 2.0 (Cat# [TT210002]).