

## Product datasheet for RC213075

### ADAMTS19 (NM\_133638) Human Tagged ORF Clone

#### Product data:

Product Type:	Expression Plasmids
Product Name:	ADAMTS19 (NM_133638) Human Tagged ORF Clone
Tag:	Myc-DDK
Symbol:	ADAMTS19
Mammalian Cell Selection:	Neomycin
Vector:	pCMV6-Entry (PS100001)
E. coli Selection:	Kanamycin (25 ug/mL)
ORF Nucleotide Sequence:	>RC213075 representing NM_133638 Red=Cloning site Blue=ORF Green=Tags(s)

TTTTGTAATACGACTCACTATAGGGCGGCCGGAATTCGTCGACTGGATCCGGTACCGAGGAGATCTGCC  
GCCCGATCGCC

ATGCGCCTGACTCACATCTGCTGCTGCTGCCTCCTTTACCAGCTGGGGTTCCTGTGCAATGGGATCGTTT  
CAGAGCTGCAGTTCGCCCCGACCCGCGAGGAGTGGGAAGTCGTGTTTCTGCGCTCTGGCGCCGGGAGCC  
GGTGGACCCGGCTGGCGGCAGCGGGGACGCGCGGACCCGGGCTGGGTGCGCGCGGTTGGGGCGGGCGGA  
AGCGCCCGGGCGCAGGCTGCCCGCAGCTCACGCGAGGTGCGCTCTGTGGCTCCGGTGCCTTTGGAGGAGC  
CCGTGGAGGGCCGATCAGAGTCCCGCTCCGGCCCCCGCCCGTCCGAGGGTGGAGGACGACGAGGAGCT  
CGAGTCGAGGAGCTGCCGCGGGATCCAGCGGGGCTGCCGCTTGTCCCGGGCGCCCGGCTCGTGG  
CAGCCGCGCCTCCCCGCAGCCGCCCCGTCGCCGCCCGGCCAGCATGCCGAGCCGGATGGCGACG  
AAGTGTGCTGCGGATCCCGCCTTCTCTCGGGACCTGTACCTGCTGCTCCGGAGAGACGGCCGCTTCT  
GGCGCCGCGCTTCGAGTGAACAGCGGCAAAATCCCGGCCCGGCCACGGGGCAGCATCCGCCCG  
CAACCTCCCGCGCCACCAGACGCGAGGCTGCTTCTACCCGAGCTGTGCTGCGGCACCCTGGCTCGTGG  
CTTCTTTAGCACCTGTGGAGTGGCTGATGGGATTTATACAGCTCAATGAGGACTTCATATTTATTGA  
GCCACTCAATGATACAATGGCCATAACAGGTACCCACACCGTGTATATAGGCAGAAAAGTCCATGGAG  
GAAAAGGTCACAGAGAAGTCAGCTTTACAGTCATTACTGTGGTATCATTTAGATAAAGGAAGACCTA  
GGTCTAGAAAAATAGCAGAAAGTGAAGAGGGAACGATATTCATACAAATTACCTCAAGAATACAACAT  
AGAGACTGTAGTGGTTCAGACCCAGCAATGGTTTCTATCATGGAGCAGATGCAGCCAGGAGATTCATT  
CTAACCATCTTAAATATGGTATTTAACCTTTTCCAACACAAGAGTCTGAGTGTGCAGGTCAATCTTCGTG  
TGATAAAGCTTATTCTGCTCCATGAAATCCACCAGAATATAATTGGGCATCATGGAGAAAAATGCT  
AGAGAGTTTTTGAAGTGCAACATGAAGAATTTGGCAAAAAGAATGATATACATTTAGAGATGTCAACA  
AACTGGGGGAAGACATGACTTCAGTGGATGCAGCTATACTTATAACAAGGAAAGATTTCTGTGTGCACA  
AAGATGAACCATGTGATACTGTTGGTATAGCTTACTTGAGTGAATGTGTAGTGAAGAGAAAAATGGTAT  
TATTGTAAGACAATGGCTTGAATCTTCTTTACAATTGCTCATGAAATGGGTGCAACATGGGCATT  
AACCATGACAATGACCACCCATCGTGTGCTGATGGTCTTCATATCATGTCTGGTGAATGGATTAAGGAC  
AGAATCTTGTGACGTTTCATGGTCTCGATGTAGCAAGGAAGATTTGAAAGATTTCTCAGGTCAAAGGC



[View online »](#)

CAGTAACTGCTTGTACAAAACAATCCGCAGAGTGTCAATTCTGTGATGGTTCCTCCAAGCTGCCAGGG  
ATGACATACACTGCTGATGAACAATGCCAGATCCTTTTTGGGCCATTGGCTTCTTTTTGTGACAGGATGC  
AGCATGTTATTTGCACAGGATTATGGTGAAGGTAGAAGGTGAGAAAGAATGCAGAACCAAGCTAGACCC  
ACCAATGGATGGAAGTACTGTGACCTTGGTAAGTGGTGAAGGCTGGAGAATGTACCAGCAGGACCTCA  
GCACCTGAACATCTGGCCGGAGAGTGGAGCCTGTGGAGTCTTGTAGCCGAACCTGCAGTGTGGGATCA  
CAGAATATGTGAGAAATCCACCTTGTCTGCAGGTTTGCCTGGATTTCAGAGACTGGCAATGTCAGGCTTAT  
AGTGTTAGAACTTCTCCCAAAGCATATACTTCAGTGGCAAGCTGTCTGGATGAAGAAAAACCATGTG  
CCTTGTTTTGCTCTCTGTTGGAAAAGAAGCAGCCTATTCTTCTATCAGAAAAAGTATGGATGGAAGTTC  
TTGTGGCTATCAGGGATTAGATATCTGTGCAAATGGCAGGTGCCAGAAAGTTGGCTGTGATGGTTTATTA  
GGGTCTCTTGAAGAGAAGATCATTGTGGTGTATGCAATGGCAATGGAAAATCATGCAAGATCATTAAAG  
GGGATTTAATCACACCAGAGGAGCAGGTTATGTAGAAGTGTGGTGTACCTGCTGGAGCAAGAAGAAT  
CAAAGTTGTGGAGAAAAGCCGGCACATAGCTATTTAGCTCTCCGAGATGCTGGCAAACAGTCTATTAAT  
AGTGACTGGAAGATTGAACACTCTGGAGCCTTCAATTTGGCTGGAACACCGTTCATTATGAAGACGAG  
GCCTCTGGGAGAAGATCTCTGCCAAAGGCTCTACTACAGCACCTTACATCTTCTGGTGTCTCTGTTTCA  
GGATCAGAATTATGGTCTTCACTATGAATACACTATCCCATCAGACCCTTCCAGAAAAACAGAGCTCT  
AAAGCACCTGAGCCCCTTTCATGTGGACACACAAGCTGGGAAGATTGCGATGCCACTTGTGGAGGAG  
GAGAAAAGGAAGACAACAGTGTCTGCACAAAAATCATGAGCAAAAATATCAGCATTGTGGACAATGAGAA  
ATGCAAACTTAACCAAGCCAGAGCCACAGATTGCAAAAGTGAATGAGCAACCATGTCAAAACAGGTGG  
ATGATGACAGAATGGACCCCTTGTTCACGAACTTGTGGAAAAGGAATGCAGAGCAGACAAGTGGCCTGTA  
CCCAACAACCTGAGCAATGGAACACTGATTAGAGCCCGAGAGAGGGACTGCATTGGGCCAAGCCCGCCTC  
TGCCACGCGCTGTGAGGGCCAGGACTGCATGACCGTGTGGGAGGCGGGAGTGTGGTCTGAGTGTTCAGTC  
AAGTGTGGCAAAGGCATACGTCACTCGGACCGTTAGATGTACCAACCAAGAAAGAAGTGTGTCTCTCTA  
CCAGACCCAGGGAGGCTGAAGACTGTGAGGATTATTCAAATGCTATGTGTGGCGAATGGGTGACTGGTC  
TAAGTGCTCAATTACCTGTGGCAAAGGAATGCAGTCCCCTGTAATCCAATGCATGCATAAGATCACAGGA  
AGACATGGAAATGAATGTTTTCTCAGAAAAACCTGCAGCATACAGGCCATGCCATCTTCAACCCTGCA  
ATGAGAAAATTAATGTAATACCATAACATCACCCAGACTGGCTGCTGACTTTCAAGTGCCTGGGAGA  
TCAGTGGCCAGTGTACTGCCGAGTGATACGTGAAAAGAACCTATGTCAGGACATGCGGTGGTATCAGCGC  
TGCTGTGAAACATGCAGGGACTTCTATGCCAAAAGCTGCAGCAGAAGAGT

ACGCGTACGCGGCCGCTCGAGCAGAACTCATCTCAGAAGAGGATCTGGCAGCAAATGATATCCTGGATT  
ACAAGGATGACGACGATAAGGTTTAA

**Protein Sequence:** >RC213075 representing NM\_133638  
 Red=Cloning site Green=Tags(s)

```
MRLTHICCCLL YQLGFLSNGIVSELQFAPDREWEVVPALWRREPVD PAGSGGSADPGWVRVGGGG
SARAQAAGSSREVRVAPVPLEEPVEGRSE SRLRPPPPSEGEDEELESQELPRGSSGAALSPGAPASW
QPPPPQPPSPPPAQAEPDGDVLLRIPAFSRDLYLLRRDGRFLAPRFAVEQRPNPGPGTGAASAP
QPPAPPDAGCFYTGAVLRHPGSLASFSTCGGGLMGFIQLNEDFIFIEPLNDTMAITGHPRVYRQKRSME
EKVTEKSALHSHYCGIISDKGRPRSRKIAESGRGKRYSYKLPQEYNIETVVVADPAMVSYHGADAARRFI
LTILNMVFNLFQHKSLSVQVNLRVIKLILLHETPELYIGHHGEKMLESFCKWQHEEFGKKNDIHLEMST
NWGEDMTSDAAILITRKDFCVHKDEPCDVTGIA YLSGMCSEKRKCI AEDNGLNLAFTIAHEMGNMGI
NHDNDHPSCADGLHIMSGEWIKQNLGDVSWSRC SKEDLERFLRSKASNCLLQTNPQSVNSVMVPSKLPG
MTYTADEQCQILFGPLASFCQEMQHVICTGLWCKVEGEKECRTKLDPPMDGTD CDLGKWKAGECTSRTS
APEHLAGEWSLWSPCSRTCSAGISSRERKCPGLDSEARDCNGPRKQYRICENPPCPAGLPGRFDWQCQAY
SVRTSSPKHILQWQAVLDEEKPCALFCSPVGEQPILLSEKVM DGTSCGYQGLDICANGRCQKVGCDGLL
GSLAREDHCGVCNGNGSKCKI IKGDFNHTRGAGYVEVLVIPAGARRIKVVEEKPAHSYLALRDAGKQSIN
SDWKIEHSGAFNLAGTTVHYVRRGLWEKISAKGPTTAPLHLLVLLFQDQNYGLHYEYTI PS DPLPENQSS
KAPEPLFMWHTSWEDDATCGGGERKTTV SCTKIMSKNISIVDNEKCKYLTKPEPQIRKNEQPQTRW
MMEWTPCSRTCGKGMQSRQVACTQQLSNGTLIRARERDCIGPKPASAQRCEGQDCMTVWEAGVWSECSV
KCGKGIHRHTVRCNTNPRKCVLSTRPREAEDCEDYSKCYVWRMGDWSKCSITCGKGMQSRVIQCMHKITG
RHGNECFSSKPAAYRPHLQPCNEKINVTITSPRLAALTFKCLGDQWPVYCRVIREKNLQDMRWYQR
CCETCRDFYAQKLQQKS
```

TRTRPLEQKLISEEDLAANDILDYKDDDDKV

**Chromatograms:** [https://cdn.origene.com/chromatograms/mk6828\\_a02.zip](https://cdn.origene.com/chromatograms/mk6828_a02.zip)

**Restriction Sites:** SgfI-MluI

**Cloning Scheme:**

Cloning sites used for ORF Shuttling:



\* The last codon before the Stop codon of the ORF

**ACCN:** NM\_133638

**ORF Size:** 3621 bp

**OTI Disclaimer:** Due to the inherent nature of this plasmid, standard methods to replicate additional amounts of DNA in E. coli are highly likely to result in mutations and/or rearrangements. Therefore, OriGene does not guarantee the capability to replicate this plasmid DNA. Additional amounts of DNA can be purchased from OriGene with batch-specific, full-sequence verification at a reduced cost. Please contact our customer care team at [custsupport@origene.com](mailto:custsupport@origene.com) or by calling 301.340.3188 option 3 for pricing and delivery.

The molecular sequence of this clone aligns with the gene accession number as a point of reference only. However, individual transcript sequences of the same gene can differ through naturally occurring variations (e.g. polymorphisms), each with its own valid existence. This clone is substantially in agreement with the reference, but a complete review of all prevailing variants is recommended prior to use. [More info](#)

**OTI Annotation:** This clone was engineered to express the complete ORF with an expression tag. Expression varies depending on the nature of the gene.

**Components:** The ORF clone is ion-exchange column purified and shipped in a 2D barcoded Matrix tube containing 10ug of transfection-ready, dried plasmid DNA (reconstitute with 100 ul of water).

**Reconstitution Method:**

1. Centrifuge at 5,000xg for 5min.
2. Carefully open the tube and add 100ul of sterile water to dissolve the DNA.
3. Close the tube and incubate for 10 minutes at room temperature.
4. Briefly vortex the tube and then do a quick spin (less than 5000xg) to concentrate the liquid at the bottom.
5. Store the suspended plasmid at -20°C. The DNA is stable for at least one year from date of shipping when stored at -20°C.

**RefSeq:** [NM\\_133638.3](#)

**RefSeq Size:** 5094 bp

**RefSeq ORF:** 3642 bp

**Locus ID:** 171019

**UniProt ID:** [Q8TE59](#)

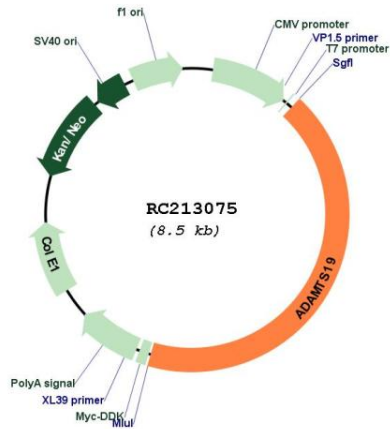
**Cytogenetics:** 5q23.3

**Protein Families:** Protease, Secreted Protein

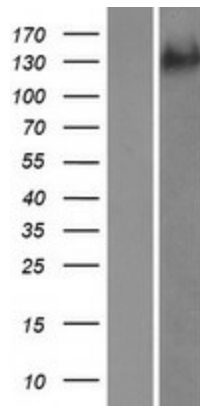
**MW:** 131.6 kDa

**Gene Summary:** This gene encodes a member of the ADAMTS (a disintegrin and metalloproteinase with thrombospondin motif) protein family. Members of the family share several distinct protein modules, including a propeptide region, a metalloproteinase domain, a disintegrin-like domain, and a thrombospondin type 1 (TS) motif. Individual members of this family differ in the number of C-terminal TS motifs, and some have unique C-terminal domains. The protein encoded by this gene has high sequence similarity to the protein encoded by ADAMTS16, another family member. [provided by RefSeq, Jul 2008]

Product images:



Circular map for RC213075



Western blot validation of overexpression lysate (Cat# [LY408759]) using anti-DDK antibody (Cat# [TA50011-100]). Left: Cell lysates from untransfected HEK293T cells; Right: Cell lysates from HEK293T cells transfected with RC213075 using transfection reagent MegaTran 2.0 (Cat# [TT210002]).