

## Product datasheet for **RC213074**

### EPS8L1 (NM\_133180) Human Tagged ORF Clone

#### Product data:

Product Type:	Expression Plasmids
Product Name:	EPS8L1 (NM_133180) Human Tagged ORF Clone
Tag:	Myc-DDK
Symbol:	EPS8L1
Synonyms:	DRC3; EPS8R1; PP10566
Mammalian Cell Selection:	Neomycin
Vector:	pCMV6-Entry (PS100001)
E. coli Selection:	Kanamycin (25 ug/mL)



[View online »](#)

ORF Nucleotide  
Sequence:

>RC213074 representing NM\_133180  
Red=Cloning site Blue=ORF Green=Tags(s)

TTTTGTAATACGACTCACTATAGGGCGGCCGGAATTCGTCGACTGGATCCGGTACCGAGGAGATCTGCC  
GCCGCGATCGCC

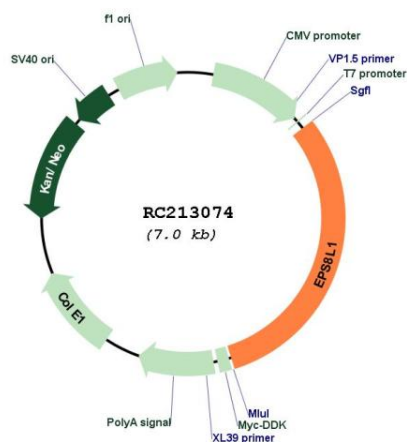
ATGAGCACCGCCACAGGCCAGAAGCTGCCCAAAGCCAAGCCAAAGTCTATCTATGAGCAGAGGAAGC  
GTTACTCCACAGTTGTTATGGCTGATGTATCCAGTACCCAGTCAATCACCTGGTGACGTTCTGCCTGGG  
TGAGGACGATGGCGTGCATACCGTGGAGGATGCCTCCAGGAAGTTGGCCGTCATGGATAGCCAGGGCCGA  
GCTGGGCACAGGAGATGCTGCTGCGAGTGTCTCCCGACCATGTCACGCTGCTCGACCCGGCCTCCAAGG  
AGGAGCTGGAGTCGTACCCACTGGGCGCCATCGTGCCTGTGACGCGGTGATGCCACCCGGCAGGAGCCG  
CTCGTTGCTGCTGCTGCTGCCAGGAACCCGAGCGCGCAGCCGACGTGCACCTCTTCCAGGGCCTG  
CGCCTCGGGGCGGAGCTGATCCGAGAGGACATCCAGGGGCTCTGCACAATTACCGCTCGGGCCGCGGGG  
AGCGCAGGGCGGGCGCTCAGGGCCACGAGGAGGAGTTGCAGCGGACCGCTCGCCCGCCGCTGAGAC  
CCCGCCCTGCAGCGCCCGCTCAGTCCGCGCAGTGTGACACCGTAGAGCGGGCGCGGGCCGCGGA  
CGACCCAGGCGAAGCCATTCCCGAGGCGAGGAGGCGCAGAGGCCGTGAGCCGGTGGGGACCTCGAGCA  
ACGCTGACTCGGCCTCCCGGACCTGGTCCCCGGGTCTGACCTGGCGGTTCTGCAGGCGGAGCGGGGA  
AGTGGACATCCTGAACCAGTGTTCGACGACGTAGAGAGCTTTGTATCGAGGCTGCGAAGTTCGGCGGAG  
GCGGCCAGGGTGTGGAGCACCGGGAACCGCGCCGAGGAGCCGGCGCCGGGCGGCTGGGGAGGGCTTGC  
TGACGCTGCGGGCAAGCCGCCCTCGGAGGCGGAGTACACCGACGTGCTGCGAAGATCAAGTACGCTT  
CAGCCTGCTGGCCGGCTGCGCGCAACATCGCCGACCCCTCCTCTCCGGAGCTGTTGCACCTTCTTTTC  
GGGCTCTGCAGATGATTGTGAACAGTCGGGGGGCCGGAGTTCGCGAGCAGTGTGCGGGCGCCGATC  
TGACATCGGATGCCGTGGCGCTGCTGCGGACAACGTCACCTCCAGTGAACGAGCTCTGGACCTCGCT  
GGGGGACTCGTGGACCCCGCCCGGGCTGGAGCTGTCCCGGAGGAGGGACCCCATACAGACCCGAGTTC  
TTCAGCGGCTGGGAGCCCGGTCACCTGACCCGACAGCCGCGCCTGGGAGGACCCAGTTGAGAAACAGC  
TACAGCACGAGCGGAGGCGCCGCGAGCAAAAGCGCCCCCAGGTCGCTGTCAATGGTACCAGACTTGGA  
GCCAGAATCTGAGCCTCAGCTGGAGTCAGAGACAGCAGGAAAAATGGTCTGTGTAATTATGACTTCCAG  
GCCCGCAACAGCAGTGAAGTGTGCGTCAAGCAGCGGGACGTAAGGAGTCTGGATGACAGTCTGAAGT  
GGTGAAGGTTCCGGACCCAGCGGGCAGGAGGATATGTGCCCTACAACATCTGACACCTACCCCGG  
ACCCCGGCTGCACCACAGCCAAAGCCCTGCCCGCAGCCTGAACAGCACTCCTCCTCACCACCAGCCCA  
GCCCGGCCCCACCTCCAGCTCTGGCTCGGCCCGCTGGGACAGGCCCGCTGGGACAGTGCATAGCC  
TCAACGGCTTGGACCCAGCGAGAAGGAGAAATCTCCAGATGCTCATCGTCAACGAGGAACTGCAGGC  
GGCCTGGCCAGGGCCGCTCGGACCGAGCCGCGCAGTCCCAGGGCCCCGCGCCCGGAACCGCAGCTC  
AGCCCGGGCTCGGACGCTCCGAGGTCGCGCCTGGTGCAGGCCAAGGGCTTTAGCTCCGGGACCGTGG  
ACGCGCTGGGTGTGCTGACCGGGGCGCAGCTTTTCTCGTGCAGAAGGAGGAGTGCAGGGCGGTGAGCC  
CGAGGAGGGGACGCTGTGTACAGCCAGGTCACCGTGCAGCGCTCGTGTGGAGGACAAAGAGAAAGTG  
TCAGAGCTGGAGGCAAGTATGGAGAAGCAAAAGAAGGTGGAAGGCGAGGTGGAATGGAGGTCATT

ACGCGTACGCGGCCGCTCGAGCAGAACTCATCTCAGAAGAGGATCTGGCAGCAAATGATATCCTGGATT  
ACAAGGATGACGACGATAAGGTTTAA

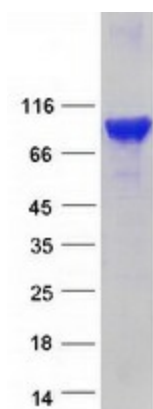


<b>OTI Disclaimer:</b>	<p>Due to the inherent nature of this plasmid, standard methods to replicate additional amounts of DNA in E. coli are highly likely to result in mutations and/or rearrangements. Therefore, OriGene does not guarantee the capability to replicate this plasmid DNA. Additional amounts of DNA can be purchased from OriGene with batch-specific, full-sequence verification at a reduced cost. Please contact our customer care team at <a href="mailto:custsupport@origene.com">custsupport@origene.com</a> or by calling 301.340.3188 option 3 for pricing and delivery.</p> <p>The molecular sequence of this clone aligns with the gene accession number as a point of reference only. However, individual transcript sequences of the same gene can differ through naturally occurring variations (e.g. polymorphisms), each with its own valid existence. This clone is substantially in agreement with the reference, but a complete review of all prevailing variants is recommended prior to use. <a href="#">More info</a></p>
<b>OTI Annotation:</b>	This clone was engineered to express the complete ORF with an expression tag. Expression varies depending on the nature of the gene.
<b>Components:</b>	The ORF clone is ion-exchange column purified and shipped in a 2D barcoded Matrix tube containing 10ug of transfection-ready, dried plasmid DNA (reconstitute with 100 ul of water).
<b>Reconstitution Method:</b>	<ol style="list-style-type: none"> <li>1. Centrifuge at 5,000xg for 5min.</li> <li>2. Carefully open the tube and add 100ul of sterile water to dissolve the DNA.</li> <li>3. Close the tube and incubate for 10 minutes at room temperature.</li> <li>4. Briefly vortex the tube and then do a quick spin (less than 5000xg) to concentrate the liquid at the bottom.</li> <li>5. Store the suspended plasmid at -20°C. The DNA is stable for at least one year from date of shipping when stored at -20°C.</li> </ol>
<b>RefSeq:</b>	<a href="#">NM_133180.3</a>
<b>RefSeq Size:</b>	2543 bp
<b>RefSeq ORF:</b>	2172 bp
<b>Locus ID:</b>	54869
<b>UniProt ID:</b>	<a href="#">Q8TE68</a>
<b>Cytogenetics:</b>	19q13.42
<b>Domains:</b>	SH3, PID
<b>Protein Families:</b>	Druggable Genome
<b>MW:</b>	80.1 kDa
<b>Gene Summary:</b>	This gene encodes a protein that is related to epidermal growth factor receptor pathway substrate 8 (EPS8), a substrate for the epidermal growth factor receptor. The function of this protein is unknown. At least two alternatively spliced transcript variants encoding different isoforms have been found for this gene. [provided by RefSeq, Jul 2008]

Product images:



Circular map for RC213074



Coomassie blue staining of purified EPS8L1 protein (Cat# [TP313074]). The protein was produced from HEK293T cells transfected with EPS8L1 cDNA clone (Cat# RC213074) using MegaTran 2.0 (Cat# [TT210002]).