

Product datasheet for **RC213063**

ALS2CL (NM_182775) Human Tagged ORF Clone

Product data:

Product Type:	Expression Plasmids
Product Name:	ALS2CL (NM_182775) Human Tagged ORF Clone
Tag:	Myc-DDK
Symbol:	ALS2CL
Synonyms:	RN49018
Mammalian Cell Selection:	Neomycin
Vector:	pCMV6-Entry (PS100001)
E. coli Selection:	Kanamycin (25 ug/mL)
ORF Nucleotide Sequence:	>RC213063 representing NM_182775 Red=Cloning site Blue=ORF Green=Tags(s)

TTTTGTAATACGACTCACTATAGGGCGGCCGGAATTCGTCGACTGGATCCGGTACCGAGGAGATCTGCC
GCC**CGGATCGCC**

ATGGAAGACATCCTGGAGGAGCTGCTGCAGCACCCGGGAGCCCAAGGCCCTGCAGCTGTACCTCAGGAAGG
CTCTGAGCAACTCACTGCACCCCTGGGAAAGCTGCTCCGGACTGATGCTGACCTCCAGGCTACCTA
CGCAGGTGTCGGGGCCAACAAGCACCTGCAGGAGCTGGCCAGGAGGAGTGAAGCAGCATGCCAGGAA
CTCTGGGCTGCCTACAGGGTCTGCTGCGAGTTGCCTTAGAGCGCAAGGGCCAGGCCCTGGAGGAGGATG
AAGACACAGAGACAAGGGACCTCCAGGTGCATGGATTGGTGTGCCCTCATGCTGCCAGCTTCTACTC
AGAGCTCTCACGCTCTACCTGCTGCTTATGAGCGGGAGGACAGCTTCTACAGCCAGGGCATTGCCAAC
TTGAGCCTCTTTCCTGATACCCAACCTGCTCGAGTTCCTGGATGTGCAGAAGCACTTGTGGCCCTCAAGG
ACCTCACGCTGACGAGCAATCAGAGGTAATCCCTGGTCAGGGACAAGTGTTCCTGTGAGCCACCGAGTG
CCTGCAGAAGATCATGACCACGGTGGACCCACGGGAGAAGCTGGAGGTGCTGGAGAGGACATACGGGGAA
ATTGAGGGCACGGTGTGAGGGTATTGGCCGGGAGTACAAGCTGCCATGGACGACCTGCTGCCACTTC
TCATCTACGTGGTGTGCGCGCCCGAATTCAGCACCTGGGAGCCGAGATCCACCTGATCCGTGACATGAT
GGACCCCAACACAGGAGGCTGTATGACTTCTGCTCACAGCCCTGGAGTCTGTTACGAGCACATC
CAGAAAGAAGACATGAGGCTGCACCGCTTACCTGGCCACTGGCACTCCAGGGAGCTCTGG

ACGCGTACGCGGGCCGCTCGAGCAGAAACTCATCTCAGAAGAGGATCTGGCAGCAAATGATATCCTGGATT
ACAAGGATGACGACGATAAGGTTTAA



[View online »](#)

Protein Sequence: >RC213063 representing NM_182775
Red=Cloning site Green=Tags(s)

MEDILEEELQHREPKALQLYLRKALSNSLHPLGKLLRTLMLTFQATYAGVGANKHLQELAQEEVKQHAQE
 LWAA YRGLLRVALERKGOALEEDEDTE TRDLQVHGLVPLMLPSFYSELF TLYLLHEREDSFYSQGIAN
 LSLFPDTQLLEFLDVQKHLWPLKDLTLTSNQRYSLVRDKCFLSATECLQKIMTTVDPREKLEVLERTYGE
 IEGTVSRVLGREYKLPMDLLPLLIYVVSRRARIQHLGAEIHLIRDMMDPNHTGGLYDFLLTALESCYEHI
 QKEDMRLHRLPGHWSRELW

TRTRPLEQKLISEEDLAANDILDYKDDDDKV

Chromatograms: https://cdn.origene.com/chromatograms/mk8024_e02.zip

Restriction Sites: SgfI-MluI

Cloning Scheme:



ACCN: NM_182775

ORF Size: 900 bp

OTI Disclaimer: The molecular sequence of this clone aligns with the gene accession number as a point of reference only. However, individual transcript sequences of the same gene can differ through naturally occurring variations (e.g. polymorphisms), each with its own valid existence. This clone is substantially in agreement with the reference, but a complete review of all prevailing variants is recommended prior to use. [More info](#)

OTI Annotation: This clone was engineered to express the complete ORF with an expression tag. Expression varies depending on the nature of the gene.

Components: The ORF clone is ion-exchange column purified and shipped in a 2D barcoded Matrix tube containing 10ug of transfection-ready, dried plasmid DNA (reconstitute with 100 ul of water).

Reconstitution Method:

1. Centrifuge at 5,000xg for 5min.
2. Carefully open the tube and add 100ul of sterile water to dissolve the DNA.
3. Close the tube and incubate for 10 minutes at room temperature.
4. Briefly vortex the tube and then do a quick spin (less than 5000xg) to concentrate the liquid at the bottom.
5. Store the suspended plasmid at -20°C. The DNA is stable for at least one year from date of shipping when stored at -20°C.

RefSeq: [NM_182775.2](#), [NP_877576.1](#)

RefSeq Size: 3148 bp

RefSeq ORF: 903 bp

Locus ID: 259173

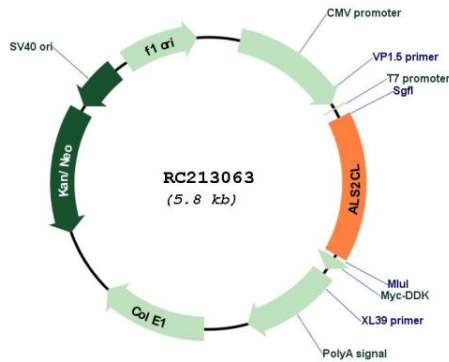
Cytogenetics: 3p21.31

Protein Families: Druggable Genome

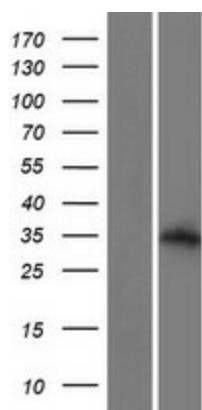
MW: 34.8 kDa

Gene Summary: Acts as a guanine nucleotide exchange factor (GEF) for Rab5 GTPase. Regulates the ALS2-mediated endosome dynamics.[UniProtKB/Swiss-Prot Function]

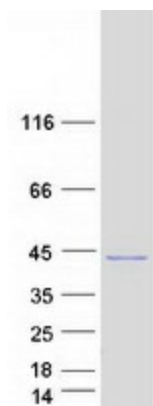
Product images:



Circular map for RC213063



Western blot validation of overexpression lysate (Cat# [LY405354]) using anti-DDK antibody (Cat# [TA50011-100]). Left: Cell lysates from untransfected HEK293T cells; Right: Cell lysates from HEK293T cells transfected with RC213063 using transfection reagent MegaTran 2.0 (Cat# [TT210002]).



Coomassie blue staining of purified ALS2CL protein (Cat# [TP313063]). The protein was produced from HEK293T cells transfected with ALS2CL cDNA clone (Cat# RC213063) using MegaTran 2.0 (Cat# [TT210002]).