

Product datasheet for **RC213062**

ATHL1 (PGGHG) (NM_025092) Human Tagged ORF Clone

Product data:

Product Type:	Expression Plasmids
Product Name:	ATHL1 (PGGHG) (NM_025092) Human Tagged ORF Clone
Tag:	Myc-DDK
Symbol:	ATHL1
Synonyms:	ATHL1
Mammalian Cell Selection:	Neomycin
Vector:	pCMV6-Entry (PS100001)
E. coli Selection:	Kanamycin (25 ug/mL)



[View online »](#)

ORF Nucleotide Sequence:

>RC213062 ORF sequence
 Red=Cloning site Blue=ORF Green=Tags(s)

TTTTGTAATACGACTCACTATAGGGCGGCCGGAATTCGTCGACTGGATCCGGTACCGAGGAGATCTGCC
 GCC**CGGATCGCC**

ATGCTGTGGACACCAGCACCCCCAGACCTGACCCTTGGGAAGGTGAGGAGGCTAGGACGTGGGACTTCC
 TGACAGCGGTGGGCGGCAGCCAGGCTGAGGCTCAGGCCTGCCTCACTGAGGCCCTGCAGCTGCAGGCCAG
 GGGAGCTCTGTATACGGCTCACGCACAGGCCTGGGCCAGCTCTGGGTAGAATGTGGCTTGACGTGGT
 GGGCCCTGCAGCTGCGCCAGGCCCTGCGTGGCTCCCTCTACTACCTGCTCAGTGCCTGCCAGCCCA
 AGGCCCCAGGATACATCTGCCATGGCCTCAGTCTGGGGCCCTCCAATGGGAGCCGTGAGGAATGCTA
 CTGGGGCCACGTCTTCTGGGACCAGGACCTCTGGATGTTCCCGAGTATCCTGATGTTCCACCCAGAAGCC
 GCCAGGGCCATCCTGGAGTACCGCATCCGCACGCTGGACGGGGCCCTGGAGAACGCCAGAACCTGGGCT
 ACCAGGGAGCCAAGTTTGCCTGGGAGAGTGCAGACTCCGGCCTAGAGGTTTCCCTGAGGACATTTACGG
 AGTCCAGGAGTCCAGTCAACGGGGCCGTGGTGTGGCCTTCGAGCTGTACTACCATACCCAGGAC
 CTGCAGCTATTTGAGAGGCTGGTGGCTGGGACGTGGTCAAGGCTGTGGCCGAGTTTTGGTGCAGTCGTG
 TTGAGTGGAGCCCCAGGGAGGAAAAGTACCACCTGAGGGGAGTCACTGCCCCGACGAGTACCATTACAGG
 GGTCAACAACCTGTGTACACCAACGCTCCTGGTCCAGAACAGCCTGCGCTTTGCTGCTGCCTGGCCAG
 GACCTGGGTCTTCCATCCCCAGCCAGTGGCTGGCGGTGGCTGACAAGTCAAGGTACCCTTTGACGTGG
 AGCAGAACTTCCACCCGGAGTTCGATGGGTATGAGCCTGGAGAGGTGGTGAAGCAGGCAGACGTCGTGCT
 CCTGGGATACCCAGTCCCTTCTCCCTGAGTCTGATGTTGCGAGGAAAATCTGGAGATTTACGAGGCT
 GTGACGTCCCCCAGGGCCCCGACCTGACCTGGAGCATGTTTGTGTGGCTGGATGGAGCTGAAGGACG
 CAGTGCAGGCCCCGGGGCCCTCTGGACAGGAGCTTTGCCAACATGGCTGAACCTTCAAGGTGGACGGA
 GAATGCAGACGGGTGAGGCGCTGTGAACCTCCTGACAGGCATGGGGGGCTTCTGCAGGCGGTGGTCTTC
 GGTGTCACGGGGTTCAGGGTACCCGAGCGGTGTGACCTTTGACCTGTGTGTCTGTGGGATCTCCA
 GAGTGAAGCTCTCCGGCATCTTCTACCAGGGGAACAAGCTCAACTTCTCTTTTTCCGAGGACTCCGTGAC
 CGTGGAGGTCACAGCTCGAGCAGGGCCCTGGGCTCCTCACCTGGAGGCTGAGCTGTGGCCATCCCAGTCC
 CGGCTCTCCCTGTTGCCAGGACACAAGTCTCCTTTCCCGCTCGGCTGGCCGGATACAAATGTACCCCC
 CGAAGTGCCTGGAAGTCCAGCTCCGAGTTCCTGGGAGGACTTTTTCAGATGTAGGGACCCGCTCCA
 GAGCCCCCTCTGGGTACCCCTGGGTTCTCCAGCCCCACCGAGTCACTCACTGTGGACCTGCCTCTGAA

ACGCGTACGCGGCCGCTCGAGCAGAAACTCATCTCAGAAGAGGATCTGGCAGCAAATGATATCTGGATT
 ACAAGGATGACGACGATAAGGTTTAA

Protein Sequence:

>RC213062 protein sequence
 Red=Cloning site Green=Tags(s)

MLWTPAPPDLTLGEGEEARTWDFLTAVGGSQAEQAQLTEALQLQARGALYTAHAQAWAQLWVECLDVG
 GPLQLRQALRGSLLYLLSALPQPKAPGYICHGLSPGGLSNGSREECYWGHVFDQDLWMFPSILMFHPEA
 ARAILEYRIRTLDGALENAQNLGYQGAKFAWESADSGLEVCPEDIYGVQEVHVNAGAVVLAFLYHTTQD
 LQLFREAGGWDVRAVAEFWCSRVEWSPREEKYHLRGMSPDEYHSGVNNSVYTNVLVQNSLRFAAALAQ
 DLGLPIPSQWLAVADKIKVFPDVEQNFHPEFDGYEPGEVVKQADVLLGYPVPFSLSPDVRKNIIEYA
 VTSPPQGPAMTWSMFAVGWMLKDAVRARGLLDRSFANMAEPFKVWTENADGSGAVNFLTGMGGFLQAVVF
 GCTGFRVTRAGVTFDPVCLSGISRVSVSGIFYQGNKLNFSFSEDSVTVEVTARAGPWAPHLEAELWPSQS
 RLSSLPGHKVSPRPRAGRIQMSPPKLPSSSSEFPGRTFSDVRDPLQSPWLWTLGSSSPTESLTVDPASE

TRTRPLEQKLISEEDLAANDILDYKDDDDKV

Chromatograms:

https://cdn.origene.com/chromatograms/mk6602_d03.zip

Restriction Sites:

Sgfl-MluI

Cloning Scheme:


ACCN: NM_025092

ORF Size: 1680 bp

OTI Disclaimer: The molecular sequence of this clone aligns with the gene accession number as a point of reference only. However, individual transcript sequences of the same gene can differ through naturally occurring variations (e.g. polymorphisms), each with its own valid existence. This clone is substantially in agreement with the reference, but a complete review of all prevailing variants is recommended prior to use. [More info](#)

OTI Annotation: This clone was engineered to express the complete ORF with an expression tag. Expression varies depending on the nature of the gene.

Components: The ORF clone is ion-exchange column purified and shipped in a 2D barcoded Matrix tube containing 10ug of transfection-ready, dried plasmid DNA (reconstitute with 100 ul of water).

Reconstitution Method:

1. Centrifuge at 5,000xg for 5min.
2. Carefully open the tube and add 100ul of sterile water to dissolve the DNA.
3. Close the tube and incubate for 10 minutes at room temperature.
4. Briefly vortex the tube and then do a quick spin (less than 5000xg) to concentrate the liquid at the bottom.
5. Store the suspended plasmid at -20°C. The DNA is stable for at least one year from date of shipping when stored at -20°C.

RefSeq: [NM_025092.3](#), [NP_079368.2](#)

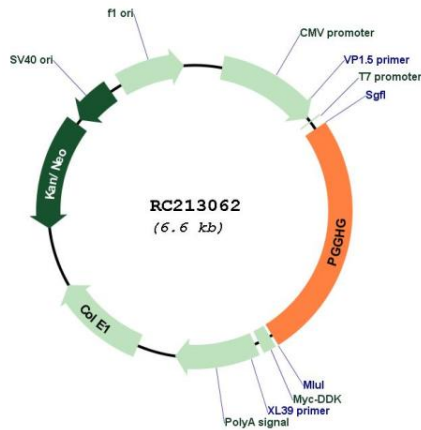
RefSeq Size: 3270 bp

RefSeq ORF: 2214 bp

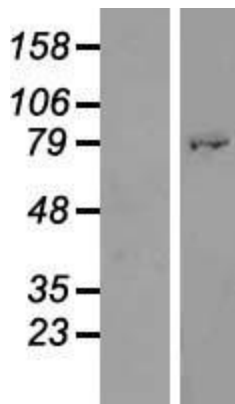
Locus ID: 80162

UniProt ID: [Q32M88](#)

Cytogenetics: 11p15.5
Domains: Glyco_hydro_65m
MW: 61.6 kDa
Gene Summary: Catalyzes the hydrolysis of glucose from the disaccharide unit linked to hydroxylysine residues of collagen and collagen-like proteins.[UniProtKB/Swiss-Prot Function]

Product images:


Circular map for RC213062



Western blot validation of overexpression lysate (Cat# [LY410897]) using anti-DDK antibody (Cat# [TA50011-100]). Left: Cell lysates from untransfected HEK293T cells; Right: Cell lysates from HEK293T cells transfected with RC213062 using transfection reagent MegaTran 2.0 (Cat# [TT210002]).