

Product datasheet for **RC213060**

RAD26L (ERCC6L2) (NM_001010895) Human Tagged ORF Clone

Product data:

Product Type:	Expression Plasmids
Product Name:	RAD26L (ERCC6L2) (NM_001010895) Human Tagged ORF Clone
Tag:	Myc-DDK
Symbol:	RAD26L
Synonyms:	BMFS2; C9orf102; HEBO; RAD26L; SR278
Mammalian Cell Selection:	Neomycin
Vector:	pCMV6-Entry (PS100001)
E. coli Selection:	Kanamycin (25 ug/mL)



[View online »](#)

ORF Nucleotide
Sequence:

>RC213060 representing NM_001010895
Red=Cloning site Blue=ORF Green=Tags(s)

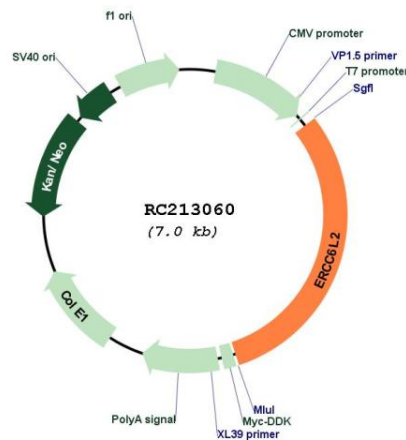
TTTTGTAATACGACTCACTATAGGGCGGCCGGAATTCGTGACTGGATCCGGTACCGAGGAGATCTGCC
GCC**CGCATCGCC**

ATGCAGCCGGGCTCGGCCCTCCCCTGGCCGGATGGATCCGTGCGGCCACAGCCCCGCGGAAACCT
CAGGCAAAGACATATGGCATCCAGGAGAAAGATGTCTTGCCCTTCTCCAGATAATGGAAAACTTTGTGA
AGCAAGCATAAAATCTATCACAGTGGATGAAAATGGCAAGTCATTTGCAGTCGTCTTATATGCAGATTTT
CAAGAAAGGAAAAACCTCTTAAACAGCTTCAAGAAGTAAAATTTGTTAAAGATTGCCCTAGGAATCTTA
TATTTGATGATGAAGATTTAGAAAACTTATTTCCAAACCGAAAAATTTCCATCATCTTCTGTTGCTTT
TAAATTATCTGACAATGGAGACTCTATTCCTTATACCATCAATAGGTATTTGAGAGACTACCAAAGAGAA
GGAACCCGGTTTCTTTATGGACTACATCCATGGAGGAGGTGCATTCTGGGTGATGACATGGGACTTG
GAAAAACAGTACAGGTTATTTCAATTTCTGGCTGCAGTTTTGCATAAAAAGGGAACCTGTGAGGATATTGA
AAATAACATGCCAGATTTTTACTAAGAAGTATGAAAAAGGAACCCCTTTCTTCTACAGCAAAAAGATG
TTCTTAATAGTTGCTCCTCTTTCTGTCCCTACAACCTGGAAGGATGAATTTGGACACTGGGGATATTTCA
GAGTCACTGTTTTACATGGAAACAGAAAAGATAATGAATTAATTCGTGTAAGCAGAGGAAATGTGAAAT
TGCTCTAAACACTTATGAAACACTACGCTTATGCCTGGATGAACTTAACAGTTTGGAAATGGTCAGCTGTC
ATTGTGGATGAAGCTCATAGAATCAAGAATCCAAAAGCTAGAGTAACAGAAGTTATGAAAGCTTTGAAAT
GTAATGTCCGCATTGGCCTCACTGGAACCATCCTTCAGAACAACTGAAGGAACTGTGGTGTGTTATGGA
CTGGGCTGTGCCAGGCCTTTTAGGGAGTGGGACCTACTTCAAGAAGCAGTTTTCTGACCCAGTAGAACAT
GGTCAGAGACACCGGCAACAAAGAGAGAACTAGCCACTGGCCGAAAGGCCATGCAAAGACTTGCCAAAA
AGATGCTGGCTGGTTTTCTCAGGCGCACCAAGACTCTTATCAAGGATCAGTTGCCTAAGAAGGAAGACCG
GATGGTGTATTGTTCTTTGACAGATTTCCAGAAAAGCTGTCTATCAAACAGTGTTAGAAAACAGAGGACGTG
ACTTTGATACTTCAATCTTCTGAGCCTTGACCTGTAGGAGTGGCCAAAAAGGAGAAATTTGTTGTATA
AGACCAATTCTCATGGTGAACAGTGAACACTTGTATCTCAGTTACCTTACAGTCCTTCAGAAGGTAGC
TAACCATGTGCGCTACTGCAAGCTGCTAGTACTTCAAACAACAGGAAACACTTATCAAAGGATATGT
GATCAGGTATTTCCAGATTTCCAGATTTGTGCAGAAAAGCAAAGATGCAGCCTTTGAAACACTTTCTG
ACCCTAAATACAGTGGAAAAATGAAGTCTTCCAGCAGCTTTAAATCATTGCAGAAAAACAGAGATAA
AGTTCTTCTCTTTCTTTTCCACCAAGTTGCTTGACGTGCTACAGCAGTACTGTATGGCGTCTGGGCTT
GATTACCGACGACTTGATGGAAGTACAAAATCAGAGGAAAGACTCAAGATTGTAAGAGTTCAACAGTA
CACAAGATGTTAACATTTGCCTTGTCTCTACAATGGCTGGTGGACTAGGCCTCAATTTTGTGCGTGCCAA
TGTTGTTGATATTTGATCCTACTTGGAAATCCAGCCAATGATCTTCAAGCCATTGACAGAGCATATAGG
ATTGGACAATGTAGAGATGTCAAAGTGCTTAGGCTGATATCCTTGGGAACTGTGGAGGAAATCATGTATT
TACGACAGATATAAAGCAGCAACTTCACTGTGTGGTGGTTGGAAGTAAAAATGCCAAACGATATTTTGA
AGCAGTTCAAGGATCTAAAGAGCATCAAGGAGAGCTTTTTGGGATCCATAACCTCTTCAAATTTAGGTCC
CAAGGGTCTTGTCTTACGAAGGACATCCTGGAGGTG

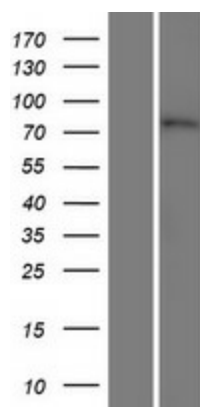
ACGCGTACGCGGCCGCTCGAGCAGAAACTCATCTCAGAAGAGGATCTGGCAGCAAATGATATCCTGGATT
ACAAGGATGACGACGATAAGGTTTAA

Components:	The ORF clone is ion-exchange column purified and shipped in a 2D barcoded Matrix tube containing 10ug of transfection-ready, dried plasmid DNA (reconstitute with 100 ul of water).
Reconstitution Method:	<ol style="list-style-type: none"> 1. Centrifuge at 5,000xg for 5min. 2. Carefully open the tube and add 100ul of sterile water to dissolve the DNA. 3. Close the tube and incubate for 10 minutes at room temperature. 4. Briefly vortex the tube and then do a quick spin (less than 5000xg) to concentrate the liquid at the bottom. 5. Store the suspended plasmid at -20°C. The DNA is stable for at least one year from date of shipping when stored at -20°C.
RefSeq:	<u>NM_001010895.2</u> , <u>NP_001010895.1</u>
RefSeq Size:	2840 bp
RefSeq ORF:	2106 bp
Locus ID:	375748
UniProt ID:	<u>Q5T890</u>
Cytogenetics:	9q22.32
MW:	80.9 kDa
Gene Summary:	This gene encodes a member of the Snf2 family of helicase-like proteins. The encoded protein may play a role in DNA repair and mitochondrial function. Mutations in this gene have been associated with bone marrow failure syndrome 2. Alternatively spliced transcript variants that encode different protein isoforms have been described. [provided by RefSeq, Apr 2014]

Product images:



Circular map for RC213060



Western blot validation of overexpression lysate (Cat# [LY423215]) using anti-DDK antibody (Cat# [TA50011-100]). Left: Cell lysates from untransfected HEK293T cells; Right: Cell lysates from HEK293T cells transfected with RC213060 using transfection reagent MegaTran 2.0 (Cat# [TT210002]).