

Product datasheet for **RC213056**

Factor XI (F11) (NM_000128) Human Tagged ORF Clone

Product data:

Product Type:	Expression Plasmids
Product Name:	Factor XI (F11) (NM_000128) Human Tagged ORF Clone
Tag:	Myc-DDK
Symbol:	F11
Synonyms:	FXI; PTA
Vector:	pCMV6-Entry (PS100001)
E. coli Selection:	Kanamycin (25 ug/mL)
Cell Selection:	Neomycin



[View online »](#)

ORF Nucleotide Sequence:

>RC213056 representing NM_000128
 Red=Cloning site Blue=ORF Green=Tags(s)

TTTTGTAATACGACTCACTATAGGGCGGCCGGAATTCGTCGACTGGATCCGGTACCGAGGAGATCTGCC
 GCC**CGGATCGCC**

ATGATTTTCTTATATCAAGTGGTACATTTTCAATTTATTTACTTCAGTTTCTGGTGAATGTGTGACTCAGT
 TGTTGAAGGACACCTGCTTTGAAGGAGGGGACATTACTACGGTCTTCACACCAAGCGCCAAGTACTGCCA
 GGTAGTCTGCACTTACCACCCAAGATGTTTACTCTTCACTTTACGCGCGGAATCACCATCTGAGGATCCC
 ACCCGATGGTTTACTTGTGTCCTGAAAGACAGTGTACAGAAACTGCCAAGAGTGAATAGGACAGCAG
 CGATTTCTGGGTATTCTTTCAAGCAATGCTCACACCAAATAAGCGCTTGAACAAAGACATTTATGTGGA
 CCTAGACATGAAGGCATAAACTATAACAGCTCAGTTGCCAAGAGTGCTCAAGATGCCAAGAAAGATGC
 ACGGATGACGTCCACTGCCACTTTTACGTACGCCACAAGGCAGTTTCCAGCCTGGAGCATCGTAACA
 TTTGTCTACTGAAGCACCCAAACAGGGACCAACCAGAATAACGAAGCTCGATAAAGTGGTGTCTGG
 ATTTTCACTGAAATCCTGTGCATTTCTAATCTGGCTTGTATTAGGGACATTTTCCCTAATACGGTGT
 GCAGACAGCAACATCGACAGTGTATGGCTCCCGATGCTTTTGTCTGTGGCCGAATCTGCACTCATCATC
 CCGTTGCTTGTTTTTACCTTCTTTCCAGGAATGGCCCAAAGAATCTCAAAGAAATCTTTGTCTCTCT
 TAAACATCTGAGAGTGGATTGCCAGTACACGCATTAAGAGAGCAAAGCTCTTTCTGGTTTCACTCTA
 CAAAGTGCAGGCACAGCATCCCAGTGTCTGCCATTCTTCAATTTACCATGACTGATTTCTTGGGAG
 AAGAACTGGATATTGTTGCTGCAAAAAGTACGAGGCCTGCCAGAACTGTGCACCAATGCCGTCGCTG
 CCAATTTTTACCTATACCCAGCCCAAGCATCTGCAACGAAGGAAGGGCAAGTGTACTTAAAGCTT
 TCTTCAAACGGATCTCCAATAAACTTACGCGGAGAGGAGGCATCTCTGGATACACATTAAGGTTGT
 GTAAAATGGATAATGAGTGTACCACCAAATCAAGCCAGGATCGTTGGAGGAAGTGCCTGTTCTGGTGG
 TGAGTGGCCGTGGCAGGTGACCCTGCACACAACCTCACCACTCAGAGACACCTGTGTGGAGGCTCCATC
 ATTGAAACCAAGTGGATATTAACAGCCGCTCACTGTTTCTATGGGGTAGAGTACACCTAAGATTTTGCCTG
 TCTACAGTGGCATTTTAAATCAATCTGAAATAAAGAGGACACATCTTTCTTGGGGTTCAAGAAATAAT
 AATCCATGATCAGTATAAAATGGCAGAAAGCGGGTATGATATTGCCTTGTGAACTGGAACCACAGTG
 AATTACACAGATTCTCAACGACCATATGCCTGCCTTCAAAGGAGATAGAAATGTAATATACACTGATT
 GCTGGGTGACTGGATGGGGTACAGAAACTAAGAGACAAAATACAAAATACTCTCCAGAAAGCCAAGAT
 ACCCTTAGTGACCAACGAAGAGTGCCAGAAGAGATACAGAGGACATAAAAATAACCCATAAGATGATCTGT
 GCCGGCTACAGGAAGGAGGGAAGGACGCTTGAAGGGAGATTCCGGAGGCCCTCTGTCTGCAACACA
 ATGAGGTCTGGCATCTGGTAGGCATCACGAGCTGGGGCGAAGGCTGTGCTCAAAGGAGCGGCCAGGTGT
 TTACCCAACGTGGTTCGAGTACGTGGACTGGATTCTGGAGAAAACCAAGCAGTG

ACGCGTACGCGGCCGCTCGAGCAGAAACTCATCTCAGAAGAGGATCTGGCAGCAATGATATCCTGGATT
 ACAAGGATGACGACGATAAGGTTTAA

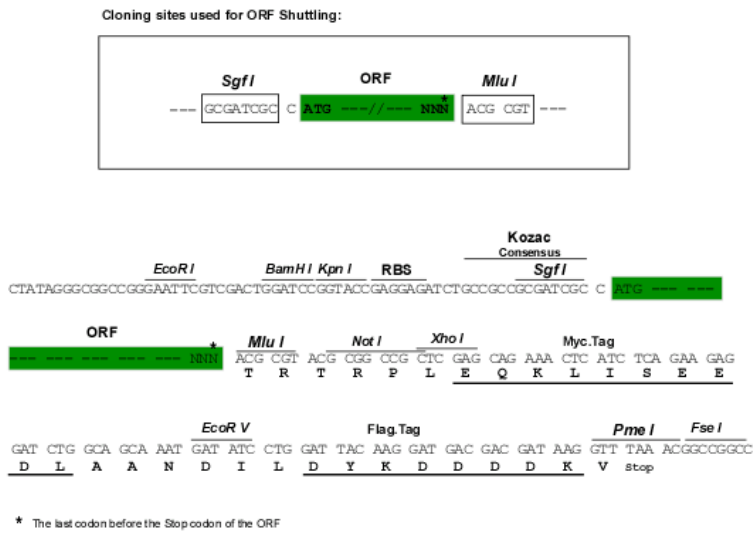
Protein Sequence:

>RC213056 representing NM_000128
 Red=Cloning site Green=Tags(s)

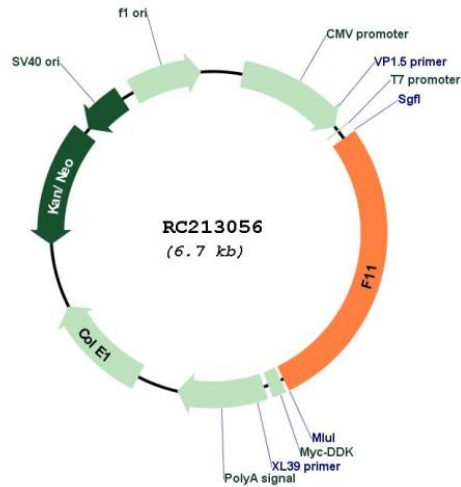
MIFLYQVVFHILFTSVSGECVTQLLKDTCFEGGDITTVFVTPSAKYQVVTYHPRCLLFTFTAESPSED
 TRWFTCVLKDSVTETLPRVNRATAISGYSFKQCSHQISACNKDIYVDLDMKGINYNSSVAKSAQEQERC
 TDDVHCHFFTYATRQFPSLEHRNICLLKHTQTGTPTRITKLDKVVSGFSLKSCALSNLACIRDIFPNTVF
 ADSNIDSVMPDAFVCGRICTHHPGCLFFTFSSQEWPKESQRNLCLLKTSEGLPSTRIKSKALSGFSL
 QSCRHSIPVVFCHSSFYHDTDFLGEELDIVAAKSHEACQKLCNAVRCQFFTYTPAQASCNEGKGCYLK
 SSSNGSPTKILHGRGGISGYTLRLCKMNECTTKIKPRIVGGTASVRGEWPQVTLHTTSPQRHLGGSI
 IGNQWILTAACHFYGVESPKILRVYSGILNQSEIKEDTSFFGVQEIIHHDQYKMAESGYDIALLLKLETTV
 NYTDSQRPICLPSKGDNRVITYDCWVTGWYRKLKDKIQNTLQAKIPLVTNEECQKRYRGHKITHKMIC
 AGYREGGKDACKGDSGGPLSCKHNEVHVLVGITSWGEGCAQRERPGVYTNVVEYVDWILEKTQAV

TRTRPLEQKLISEEDLAANDILDYKDDDDKV

Chromatograms: https://cdn.origene.com/chromatograms/mg2522_h07.zip
 Restriction Sites: SgfI-MluI
 Cloning Scheme:



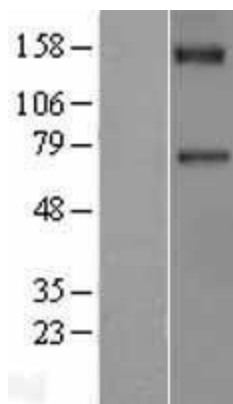
Plasmid Map:



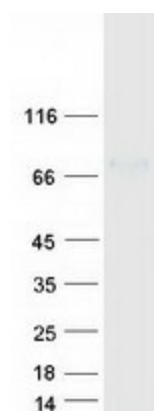
ACCN: NM_000128
 ORF Size: 1875 bp

OTI Disclaimer:	The molecular sequence of this clone aligns with the gene accession number as a point of reference only. However, individual transcript sequences of the same gene can differ through naturally occurring variations (e.g. polymorphisms), each with its own valid existence. This clone is substantially in agreement with the reference, but a complete review of all prevailing variants is recommended prior to use. More info
OTI Annotation:	This clone was engineered to express the complete ORF with an expression tag. Expression varies depending on the nature of the gene.
Components:	The ORF clone is ion-exchange column purified and shipped in a 2D barcoded Matrix tube containing 10ug of transfection-ready, dried plasmid DNA (reconstitute with 100 ul of water).
Reconstitution Method:	<ol style="list-style-type: none">1. Centrifuge at 5,000xg for 5min.2. Carefully open the tube and add 100ul of sterile water to dissolve the DNA.3. Close the tube and incubate for 10 minutes at room temperature.4. Briefly vortex the tube and then do a quick spin (less than 5000xg) to concentrate the liquid at the bottom.5. Store the suspended plasmid at -20°C. The DNA is stable for at least one year from date of shipping when stored at -20°C.
RefSeq:	NM_000128.4
RefSeq Size:	2217 bp
RefSeq ORF:	1878 bp
Locus ID:	2160
UniProt ID:	P03951
Cytogenetics:	4q35.2
Domains:	APPLE, Tryp_SpC, PAN
Protein Families:	Druggable Genome, Protease, Secreted Protein
Protein Pathways:	Complement and coagulation cascades
MW:	69.9 kDa
Gene Summary:	This gene encodes coagulation factor XI of the blood coagulation cascade. This protein is present in plasma as a zymogen, which is a unique plasma coagulation enzyme because it exists as a homodimer consisting of two identical polypeptide chains linked by disulfide bonds. During activation of the plasma factor XI, an internal peptide bond is cleaved by factor XIIa (or XII) in each of the two chains, resulting in activated factor XIa, a serine protease composed of two heavy and two light chains held together by disulfide bonds. This activated plasma factor XI triggers the middle phase of the intrinsic pathway of blood coagulation by activating factor IX. Defects in this factor lead to Rosenthal syndrome, a blood coagulation abnormality. [provided by RefSeq, Jul 2008]

Product images:



Western blot validation of overexpression lysate (Cat# [LY400043]) using anti-DDK antibody (Cat# [TA50011-100]). Left: Cell lysates from untransfected HEK293T cells; Right: Cell lysates from HEK293T cells transfected with RC213056 using transfection reagent MegaTran 2.0 (Cat# [TT210002]).



Coomassie blue staining of purified F11 protein (Cat# [TP313056]). The protein was produced from HEK293T cells transfected with F11 cDNA clone (Cat# RC213056) using MegaTran 2.0 (Cat# [TT210002]).