

## Product datasheet for RC213043

### Amino terminal enhancer of split (AES) (NM\_198970) Human Tagged ORF Clone

#### Product data:

**Product Type:** Expression Plasmids  
**Product Name:** Amino terminal enhancer of split (AES) (NM\_198970) Human Tagged ORF Clone  
**Tag:** Myc-DDK  
**Symbol:** Amino terminal enhancer of split  
**Synonyms:** AES; AES-1; AES-2; ESP1; GRG; Grg-5; GRG5  
**Mammalian Cell Selection:** Neomycin  
**Vector:** pCMV6-Entry (PS100001)  
**E. coli Selection:** Kanamycin (25 ug/mL)  
**ORF Nucleotide Sequence:** >RC213043 representing NM\_198970  
 Red=Cloning site Blue=ORF Green=Tags(s)

TTTTGTAATACGACTCACTATAGGGCGGCCGGAATTCGTCGACTGGATCCGGTACCGAGGAGATCTGCC  
 GCC**CGATCGCC**

ATGATGTTTCCACAAAGCAGGCATTGGGGCTCCTCGCACCTACCCAGCAACTCAAATTCACCACCTCGG  
 ACTCCTGCGACCGCATCAAAGACGAATTCAGCTACTGCAAGCTCAGTACCACAGCCTCAAGCTCGAATG  
 TGACAAGTTGGCCAGTGAGAAGTCAGAGATGCAGCGTCACTATGTGATGTACTACGAGATGTCCTACGGC  
 TTGAACATCGAGATGCACAAACAGGCTGAGATCGTCAAAGGCTGAACGGATTTGTGCCAGGTCCTCGC  
 CCTACCTCTCCAAGAGCACCAGCAGCAGTCTTGGGAGCCATTGAGAGGCCAAGCAGGTCACCGCTCC  
 CGAGCTGAACTCTATCATCCGACAGCTCCAAGCCACCAGCTGTCCAGCTGCAGGCCCTGGCCCTGCC  
 TTGACCCCACTACCCGTGGGGCTGCAGCCGCTTCGCTGCCGGCGGTGAGCGCAGGCACCGGCTCCTCT  
 CGCTGTCCGCGTGGGTTCCAGGCCACTCTCCAAGGAAGACAAGAACGGGCACGATGGTGACACCCA  
 CCAGGAGGATGATGGCGAGAAGTCGGAT

**ACGCGT**ACGCGGCCGCTCGAGCAGAACTCATCTCAGAAGAGGATCTGGCAGCAATGATATCCTGGATT  
 ACAAGGATGACGACGATAAGGTTTAA

**Protein Sequence:** >RC213043 representing NM\_198970  
 Red=Cloning site Green=Tags(s)

MMFPQSRHSGSSHLPPQLKFTTSDSCDRIKDEFQLLQAQYHSLKLECDKLASEKSEMQRHYVMYEMSYG  
 LNIEMHKQAEIVKRLNGICAQVLPYLSQEHQQQVLGAIERAKQVTAPELNSIIRQLQAHQLSQLALALP  
 LTPLPVGLQPPSLPAVSAGTGLLSLSALGSAHLKEDKNGHDGDTHQEDDGEKSD

**TRTRPLEQKLISEEDLAANDILDYKDDDDKV**



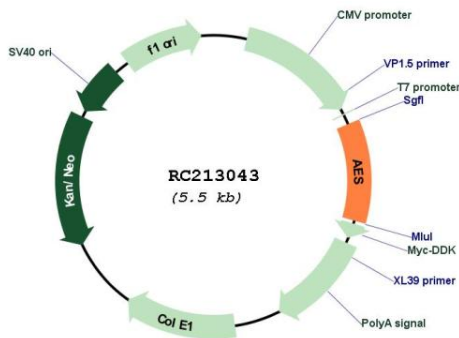
[View online »](#)



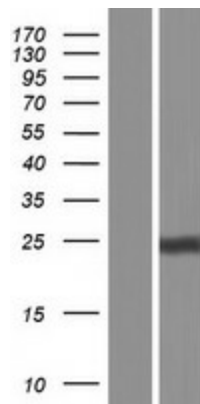
UniProt ID: [Q08117](#)  
 Cytogenetics: 19p13.3  
 Protein Families: Druggable Genome, Transcription Factors  
 MW: 21.7 kDa

**Gene Summary:** The protein encoded by this gene is similar in sequence to the amino terminus of Drosophila enhancer of split groucho, a protein involved in neurogenesis during embryonic development. The encoded protein, which belongs to the groucho/TLE family of proteins, can function as a homooligomer or as a heterooligomer with other family members to dominantly repress the expression of other family member genes. Three transcript variants encoding different isoforms have been found for this gene. [provided by RefSeq, Jul 2008]

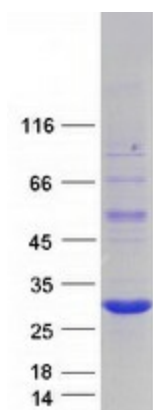
**Product images:**



Circular map for RC213043



Western blot validation of overexpression lysate (Cat# [LY404646]) using anti-DDK antibody (Cat# [TA50011-100]). Left: Cell lysates from untransfected HEK293T cells; Right: Cell lysates from HEK293T cells transfected with RC213043 using transfection reagent MegaTran 2.0 (Cat# [TT210002]).



Coomassie blue staining of purified TLE5 protein (Cat# [TP313043]). The protein was produced from HEK293T cells transfected with TLE5 cDNA clone (Cat# RC213043) using MegaTran 2.0 (Cat# [TT210002]).