

Product datasheet for **RC213031**

LAD1 (NM_005558) Human Tagged ORF Clone

Product data:

Product Type:	Expression Plasmids
Product Name:	LAD1 (NM_005558) Human Tagged ORF Clone
Tag:	Myc-DDK
Symbol:	LAD1
Synonyms:	LadA
Mammalian Cell Selection:	Neomycin
Vector:	pCMV6-Entry (PS100001)
E. coli Selection:	Kanamycin (25 ug/mL)



[View online »](#)

ORF Nucleotide Sequence:

>RC213031 representing NM_005558
 Red=Cloning site Blue=ORF Green=Tags(s)

TTTTGTAATACGACTCACTATAGGGCGGCCGGGAATTCGTCGACTGGATCCGGTACCGAGGAGATCTGCC
 GCC**GCGATCGCC**

ATGGCTGT CAGCAGGAAGGACTGGTCCGCGCTGTCCAGCCTTGCCCGGCAGAGGACTCTGGAGGATGAGG
 AGGAACAGGAGCGGAGCGCAGGCGGCGCACCGCAACCTGAGCTCCACCACGGACGATGAGGCTCCAG
 GCTCAGCCAGAATGGAGACCGGCAGGCCTCTGCTTCTGAGAGACTACCGAGCGTGAAGAAGCAGAGGTG
 CCCAAGCCACTGCCCCAGCCTCCAAGATGAGGACGAGGACATCCAGAGCATCCTCAGAACACGGCAGG
 AGCGGAGGCAGAGGCGCAGGTGGTGGAGGCTGCACAGGCCCCCATCCAGGAGAGGCTGGAGGCAGAGGA
 GGGGAGGAACAGCTTGAGCCCTGTGCAGGCCACACAGAAACCCCTAGTCTCCAAGAAGGAACTGGAAATC
 CCACCTCGCCGGAGACTGAGTCGGGAACAGCGGGCCCTGGGCCCTGGAGGAGGAGACTTGGTGGGCA
 GGGAGCCAGAAGAGAGGAAGAAAGGGTTCCAGAAAAGTCCCAGTCTTGGAGAAATCCTCCATGCCAAA
 GAAGACGCACCTGAAAAGAGCCTGGTCTCCGATAAAACCTCCATCTCTGAGAAGGTGCTGCCTCAGAG
 AAGACATCTATCAGAGAAGATAGCAGTGT CAGAGAAAAGAAACAGCTCAGAGAAGAAGTCTGTTCTAG
 AAAAAACCAAGTGTCTCTGAGAAGTCGCTGGCCCAAGGATGGCACTGGGCTCAGGAAGGAGGCTGGTGT
 TGAGAAAGCTTCCATCTTTGAGAAGGCACTGGCCTCAGAGAAGAGCCCAACTGCAGATGCTAAGCCGGCC
 CCAAAGAGGGCCACAGCCTCAGAGCAGCCCTGGCGCAGGAGCCGCCAGCCTCTGGGGGAAGCCAGCCA
 CCACCAAGGAGCAGAGAGGAAGGGCCCTCCCTGGGAAGAACCTGCCCTCTTTGGCAGAGCAGGGGGCTTC
 AGACCTCCGACTGTGGCCTCCCGCCTCCACCCGTCACACTCCAGGTGAAAATCCCAGCAAGGAGGAA
 GAGGCAGATATGCTCACCACACAGCGAACCTACAGCAGCTCCCTCAAACGCTCCAGCCCAGGACCA
 TCTCCTTTCGGATGAAACCCAAGAAAAGAACTCGGAAACAACCTAACTCGCAGTGCCAGCATGAAAGT
 CCCAGACAACACAGTGAAGTTGGGAGAGAAGCTGGAGAGATACCACACGGCCATACGGAGATCAGAAATCT
 GTCAAGTCTCGGGTCTGCCTTGCCTGACTGAGTTATTCGTGGCTCCTGTGGGTGTAGCCAGCAAGCGCCACC
 TCTTTGAGAAGGAACTGGCGGGCCAGAGCCGAGCAGAACCAGCCTCCAGCCGGAAGGAGAAGCTTGGGCT
 CTCAGGGGTTGTGACATCAAGGCTCAACCTGTGGATCAGCAGGACCCAGGAATCTGGAGATCAGGACCC
 CAGGAGGCACAGAAAGCATCATCTGCAACCGAGAGGTCTCAGTGGGGACAGAAATCTGACTCCTCGCTGG
 ACGCTGAGGTG

ACGCGTACGCGGCGGCTCGAGCAGAAACTCATCTCAGAAGAGGATCTGGCAGCAAATGATATCCTGGATT
 ACAAGGATGACGACGATAAGGTTTAA

Protein Sequence:

>RC213031 representing NM_005558
 Red=Cloning site Green=Tags(s)

MAVSRKDWSSSLARQRTLEDEEEQERERRRRHRNLSSTTDDEAPRLSQNGDRQASASERLPSVEEAEV
 PKPLPPASKDEDEDIQSILRTRQERRRRQVVEAAQAPIQERLEAEENSLSPVQATQKPLVSKKELEI
 PRRRLSREQRGPWALEEESLVGREPEERKKGVPKSPVLEKSSMPKTAPEKSLVSDKTSISEKVLASE
 KTSLEKIAVSEKRNSEKKSVELEKTSVSEKSLAPGMALGSGRRLVSEKASIFEKALASEKSPTADAKPA
 PKRATASEQPLAQEPASGGSPATTKEQRGRALPGKNLPSLAEQGASDPPTVASRLPPVTLQVKIPSKEE
 EADMSSPTQRTYSSSLKRSSPTISFRMKPKKENSETTLTRSASMKLPDNTVKLGEKLERYHTAIRRES
 VKSRGLPCTELFVAPVGVASKRHLFEKELAGQSRAPASSRKENLRLSGVVT SRLNLWISRTQESGDQDP
 QEAQKASSATERSQWQKSDSSSLDAEV

TRTRPLEQKLISEEDLAANDILDYKDDDDKV

Chromatograms:

https://cdn.origene.com/chromatograms/mk6157_b07.zip

Restriction Sites:

Sgfl-MluI

Cloning Scheme:


ACCN: NM_005558

ORF Size: 1551 bp

OTI Disclaimer: The molecular sequence of this clone aligns with the gene accession number as a point of reference only. However, individual transcript sequences of the same gene can differ through naturally occurring variations (e.g. polymorphisms), each with its own valid existence. This clone is substantially in agreement with the reference, but a complete review of all prevailing variants is recommended prior to use. [More info](#)

OTI Annotation: This clone was engineered to express the complete ORF with an expression tag. Expression varies depending on the nature of the gene.

Components: The ORF clone is ion-exchange column purified and shipped in a 2D barcoded Matrix tube containing 10ug of transfection-ready, dried plasmid DNA (reconstitute with 100 ul of water).

Reconstitution Method:

1. Centrifuge at 5,000xg for 5min.
2. Carefully open the tube and add 100ul of sterile water to dissolve the DNA.
3. Close the tube and incubate for 10 minutes at room temperature.
4. Briefly vortex the tube and then do a quick spin (less than 5000xg) to concentrate the liquid at the bottom.
5. Store the suspended plasmid at -20°C. The DNA is stable for at least one year from date of shipping when stored at -20°C.

RefSeq: [NM_005558.4](#)

RefSeq Size: 2869 bp

RefSeq ORF: 1554 bp

Locus ID: 3898

UniProt ID: [O00515](#)

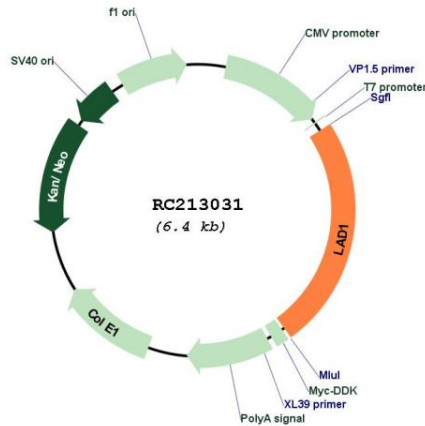
Cytogenetics: 1q32.1

Protein Families: Secreted Protein

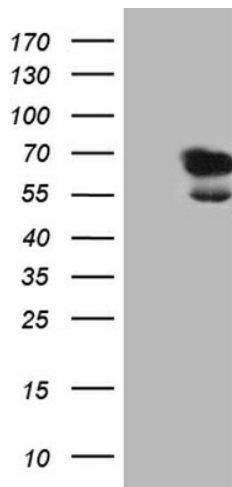
MW: 57 kDa

Gene Summary: The protein encoded by this gene may be an anchoring filament that is a component of basement membranes. It may contribute to the stability of the association of the epithelial layers with the underlying mesenchyme. [provided by RefSeq, Jul 2008]

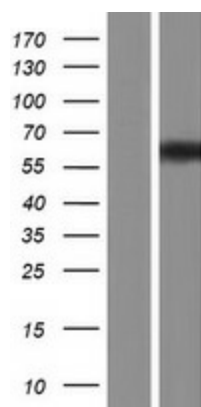
Product images:



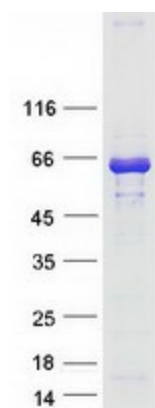
Circular map for RC213031



HEK293T cells were transfected with the pCMV6-ENTRY control (Cat# [PS100001], Left lane) or pCMV6-ENTRY LAD1 (Cat# RC213031, Right lane) cDNA for 48 hrs and lysed. Equivalent amounts of cell lysates (5 ug per lane) were separated by SDS-PAGE and immunoblotted with anti-LAD1 (Cat# [TA811683])(1:2000). Positive lysates [LY401704] (100ug) and [LC401704] (20ug) can be purchased separately from OriGene.



Western blot validation of overexpression lysate (Cat# [LY401704]) using anti-DDK antibody (Cat# [TA50011-100]). Left: Cell lysates from untransfected HEK293T cells; Right: Cell lysates from HEK293T cells transfected with RC213031 using transfection reagent MegaTran 2.0 (Cat# [TT210002]).



Coomassie blue staining of purified LAD1 protein (Cat# [TP313031]). The protein was produced from HEK293T cells transfected with LAD1 cDNA clone (Cat# RC213031) using MegaTran 2.0 (Cat# [TT210002]).