

Product datasheet for **RC213015**

OTUD7A (NM_130901) Human Tagged ORF Clone

Product data:

Product Type:	Expression Plasmids
Product Name:	OTUD7A (NM_130901) Human Tagged ORF Clone
Tag:	Myc-DDK
Symbol:	OTUD7A
Synonyms:	C15orf16; C16ORF15; CEZANNE2; OTUD7
Vector:	pCMV6-Entry (PS100001)
E. coli Selection:	Kanamycin (25 ug/mL)
Cell Selection:	Neomycin



[View online »](#)

ORF Nucleotide Sequence:

>RC213015 representing NM_130901
 Red=Cloning site Blue=ORF Green=Tags(s)

TTTTGTAATACGACTCACTATAGGGCGGCCGGAATTCGTCGACTGGATCCGGTACCGAGGAGATCTGCC
 GCC**CGCATCGCC**

ATGGTTTCTAGTGTGCTTCCAAACCCACCTCGGCTGAGTGTGGCAGCACTTCTACATGATCCTATGA
 CTCTTGATATGGACGCAGTCCTGTCAGACTTTGTTTCGGTCCACGGGGCAGAACCTGGTCTGGCCAGAGA
 CCTGCTGGAAGGCAAAAAGTGGGACCTGACAGCCGCTCTGAGCGACTATGAGCAGCTCCGCCAGGTGCAC
 ACAGCCAATCTGCCACATGTGTTCAATGAAGGGCGGGTCCCAAGCAGCCAGAGCGAGAGCCACAGCCCG
 GGCACAAGGTGGAGCGACCCTGCCTGCAGAGGCAGGACGACATTGCCAAGAAAAGCGGCTTTCCCGGGG
 GATTTCCACGCCAGCTCAGCCATCGTCTCCCTGGCCCGTCCCACGTGGCAAGTGAATGCAACAACGAG
 CAGTTCCCTGGAGATGCCAATCTACACATTCCAGTTGCCAGACCTGAGCGTGTACAGCGAGGATTTCA
 GGAGTTCATCGAGCGGACTTGATCGAGCAGGCAACAATGGTGGCTTTGGAGCAGGCAGGTCGCCTGAA
 CTGGTGGTCCACTGTGTGCACGAGCTGTAACCGCTTCTCTCTGGCCACAACAGGGGATGGGAACTGC
 CTTTTACATGCTCTTACTGGGAATGTGGGGTTTCACGACCGGACCTGGTGTACCGAAAGCTCTCT
 ATACCATGATGAGGACGGGAGCTGAGAGGGAAGCCCTGAAGCGGAGGTGGAGGTGGCAGCAGACGCAGCA
 GAATAAGGAGGAGGAGTGGGAGCGGGAGTGGACGGAGCTGCTGAAGTGGCCTCCAGCGAGCCGCGCACA
 CACTTCAGCAAGAATGGCGGCACGGGCGGGGTGTGGACAACCTCTGAGGACCCCGTGTACGAGAGCTGG
 AAGAGTTCACGTTTTTGTCTAGCCATATAATGAAGAGGCCATCGTTGTTGTGGCAGATAACAATGTT
 AAGAGACTCAGGTGGAGAAGCGTTCGCACCCATCCATTTCGAGGGATCTACCTGCCCTTGAGGTCCT
 CCCAACAGATGCCACTGCTCGCTCTGGTCTGGCCTATGATCAAGCCATTTCTCTGCCCTTGTGTCCA
 TGGAACAGAGAGACCAGCAAAGAGAACAAGCCGTGATCCCCTGACGGATTCTGAGCACAAGCTGCTGCC
 TCTGCACTTTGCAAGTGGACCCTGGCAAGGACTGGGAGTGGGGAAAGACGACAACGATAACGCCCGGCTG
 GCCCACCTTATCCTGTGCTAGAAAGCAAGCTGAACCTTCTGCACAGCTACATGAACGTGACGTGGATCC
 GGATCCCTCCGAGACACGGGCGCCCTGGCACAGCCGGAGTCTCCACGGCCTCGGCAGGGGAGGACGT
 GCAGTCCCTGGCCGACTCGTGGACTCGGACCGGATTCCGGTGTGCAGCAATTCTAACAGCAATAACGGC
 AAGAACGGCAAGGACAAGGAGAAGGAGAAGCAGCGCAAGGAGAAGGACAAGACGCGCGCCGACTCCGTGG
 CCAACAAGCTGGCAGCTTCAAGACGCTGGGCATCAAGCTGAAGAAAACATGGGCGGCTCGGCGG
 CCTGGTGCACGGCAAGATGGGCCGCGCAACTCCGCAATGGCAAGAACGGGACTCGGCCGAGCGGGC
 AAGGAGAAGAAGCCAAGTCGCGCAAGGGCAGCAAGGAGGAGTCTGGTGCCTCGCCAGCAGCTCGCCGT
 CGGAAAAGACCACGCCGTGCGCCACAGACAAGGCAGCGGGCGCGTCCGCCGCGGAGAAGGGCGGTGGGCC
 GCGGGGCGACGCCTGGAAGTACAGCAGCGATGTGAAGCTGAGCCTCAACATCCTGCGCGCCGCCATGCAG
 GGGGAGCGCAAGTTTATCTTCGCCGGCCTGCTGCTCACCAGCCACCGGCACCAAGTTCCACGAGGAGATGA
 TCGGCTACTACCTGACGAGCGCGCAGGAGCGCTTACGCGCCGAGCAGGAGCAGCGCGCCGCGACGCCGC
 TACTGCGGCCCGCTGCCGCGCCGCGCCGCGCCACGGCCAAGCGGCCGCGCGCAGACCCGGAGACG
 GAGGGCGTGCCGGTCCCGGAGCGCGCTTCCGGGCCACCCACGCAGCTGGTGTCAAGCTCAAGGAGC
 GGCCGAGCCCCGGGCCCGCGCAGGGCGTGGCGCGGGCGCGCGGGCGGCACGGCTCCCCGGGGGG
 AGGCGCGCGCGTGCAGCGCCAGCGGACCAAGTGCCTGGCCGAGCCCCCGCGCCAGCGCGCCAGAGC
 GTCATCCAGTGCAGGCGTCCGGCGCGGGACGAGGCGTGCGCCCGGCCGTGGGGCGCTGCGGCGCT
 GCGCCACGTACCCGACGAGAACCCTCGCTGTGTCGACAGACTACAGCCCGCGCGCGCCGCCCT
 GCGCACCGTCAACACGGTTCGAGTCGCTGGCGCGCGGTCGCCGGGGCCCTACCGGGCGCGCGGGGACG
 GCGGGGGCGCGGAGCACAAGTCGACAGACTACACCAACGGCTTCCGGCGCCCTGCGCGACGGCTGGAGT
 TCGCCGACCGGACGCGCCGACCGCGCTCGAACGGTGAAGTGCGGCGTGGCGGCCCGGGCCGGTGA
 GCGGGCGTCCAGCGGAGAAGTGTGCTTCTACGGGCGCGGAGACCGAGCACTACTGCTCTACTGC
 TACCGCGAGGAGTGGCGCGCGCGGAGGCGCGGGGCCCGCC

ACGCGTACGCGGCCGCTCGAGCAGAAACTCATCTCAGAAGAGGATCTGGCAGCAAATGATATCCTGGATT
 ACAAGGATGACGACGATAAGGTTTAA

Protein Sequence: >RC213015 representing NM_130901
 Red=Cloning site Green=Tags(s)

MVSSVLPNPTSAECWAALLHDPMTLDMDAVL SDFV RSTGAEPGLARDLLEKGNWDLTAALSDYEQLRQVH
 TANLPHVFNEGRGPKQPEREPQPGHKVERPCLQRQDDIAQEKRLSRGISHASSAIVSLARSHVASECNE
 QFPLEMPIYTFQLPDL SVYSEDFRSFIERDLIEQATMVALEQAGRLNWWSTVCTSCKRLLPLATTGDGNC
 LLHAASLGMWGFHDDRDLVLRKALYTMRTGAEREALKRRWRWQQTQONKEEWEWERWTELLKLASSEPT
 HFSKNGGTGGVDNSEDPVYSELEEFHVFVLAHILRRPIVVVADTMLRDSGGEAFAPIPFGGIYLPLEVP
 PNRCHCSPLVLAYDQAHFSALVSMEQRDQREQAVIPLTDSEHKLLPLHFAVDPGKDWEWGKDDNDNARL
 AHLILSLEAKLNLHSHYMNVTWIRIPSETRAPLAQPESPTASAGEDVQSLADSLSDRDSVCSNSNSNNG
 KNGKDKKEKQREKDKTRADSVANKLGSF SKTLGIKLLKKNMGGGLGGLVHGKMGRANSANGKNGDSAERG
 KEKAKSRKGSKEESGASASTSPSEKTPSPTDKAAGASPAEKGGRGDawkYSTDVKLSLNLRAAMQ
 GERKFI FAGLLL TSHRHQFHEEMIGYYL TSAQERFSAEQEQRRAATAAAAAAAAAAATAKRPPRRPET
 EGVVPERASPGPPTQLVLKLERPSPGPAAGRAAAAAGGTASPGGGARRASASGPVGRSPPAPARQS
 VIHVQASGARDEACAPAVGALRPCATYPQQRSLSSQSYSPARAALRTVNTVESLARAVPGALPGAAGT
 AGAAEHKSQTYTNGFGALRDGLEFADADAPTARSNGECGRGGPGPVQRRQRENCAFYGRAETEHYCSYC
 YREELRRRREARGARP

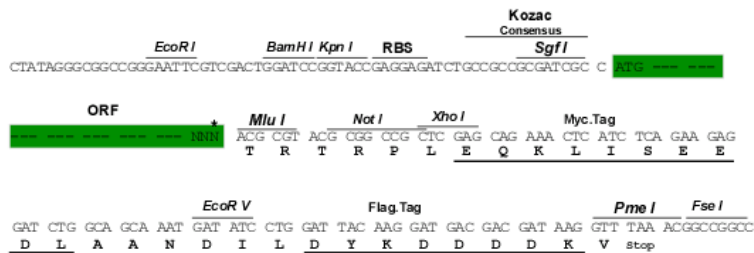
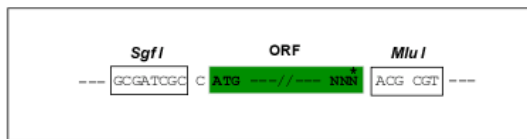
TRTRPLEQKLISEEDLAANDILDYKDDDDKV

Chromatograms: https://cdn.origene.com/chromatograms/mk8024_e08.zip

Restriction Sites: SgfI-MluI

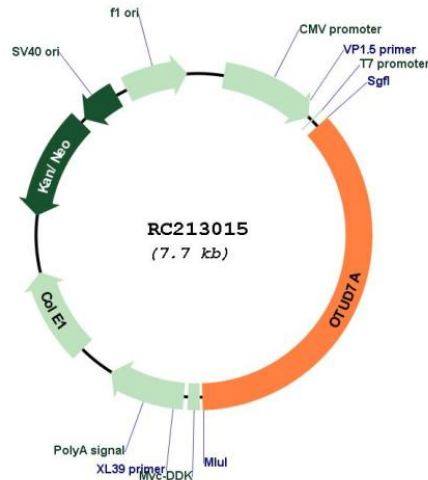
Cloning Scheme:

Cloning sites used for ORF Shuttling:



* The last codon before the Stop codon of the ORF

Plasmid Map:



ACCN: NM_130901

ORF Size: 2778 bp

OTI Disclaimer: The molecular sequence of this clone aligns with the gene accession number as a point of reference only. However, individual transcript sequences of the same gene can differ through naturally occurring variations (e.g. polymorphisms), each with its own valid existence. This clone is substantially in agreement with the reference, but a complete review of all prevailing variants is recommended prior to use. [More info](#)

OTI Annotation: This clone was engineered to express the complete ORF with an expression tag. Expression varies depending on the nature of the gene.

Components: The ORF clone is ion-exchange column purified and shipped in a 2D barcoded Matrix tube containing 10ug of transfection-ready, dried plasmid DNA (reconstitute with 100 ul of water).

Reconstitution Method:

1. Centrifuge at 5,000xg for 5min.
2. Carefully open the tube and add 100ul of sterile water to dissolve the DNA.
3. Close the tube and incubate for 10 minutes at room temperature.
4. Briefly vortex the tube and then do a quick spin (less than 5000xg) to concentrate the liquid at the bottom.
5. Store the suspended plasmid at -20°C. The DNA is stable for at least one year from date of shipping when stored at -20°C.

RefSeq: [NM_130901.3](#)

RefSeq Size: 3042 bp

RefSeq ORF: 2781 bp

Locus ID: 161725

UniProt ID: [Q8TE49](#)

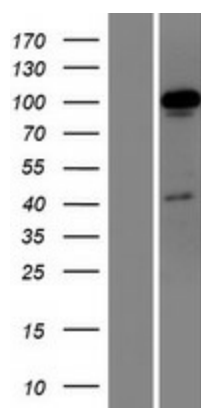
Cytogenetics: 15q13.3

Domains: zf-A20

MW: 100.5 kDa

Gene Summary: The protein encoded by this gene is a deubiquitinating enzyme and possible tumor suppressor. The encoded protein acts on TNF receptor associated factor 6 (TRAF6) to control nuclear factor kappa B expression. However, this gene is downregulated by SNAIL1 in hepatocellular carcinoma cells, contributing to their progression and malignancy. [provided by RefSeq, Aug 2016]

Product images:



Western blot validation of overexpression lysate (Cat# [LY408886]) using anti-DDK antibody (Cat# [TA50011-100]). Left: Cell lysates from untransfected HEK293T cells; Right: Cell lysates from HEK293T cells transfected with RC213015 using transfection reagent MegaTran 2.0 (Cat# [TT210002]).