

## Product datasheet for **RC213012**

### GRHL3 (NM\_021180) Human Tagged ORF Clone

#### Product data:

Product Type:	Expression Plasmids
Product Name:	GRHL3 (NM_021180) Human Tagged ORF Clone
Tag:	Myc-DDK
Symbol:	GRHL3
Synonyms:	SOM; TFCP2L4; VWS2
Mammalian Cell Selection:	Neomycin
Vector:	pCMV6-Entry (PS100001)
E. coli Selection:	Kanamycin (25 ug/mL)



[View online »](#)

**ORF Nucleotide Sequence:**

>RC213012 representing NM\_021180  
 Red=Cloning site Blue=ORF Green=Tags(s)

TTTTGTAATACGACTCACTATAGGGCGGCCGGAATTCGTCGACTGGATCCGGTACCGAGGAGATCTGCC  
 GCC**CGCATCGCC**

ATGTGGATGAATTCATTCTTCTATTTTTCTTTTCAGGTCTGTGCGGCTGCTAAAGAACGACCCAGTCA  
 ACTTGCAGAAATTCTCTTACACTAGTGAGGATGAGGCCTGGAAGACGTACCTAGAAAACCCGTTGACAGC  
 TGCCACAAAGGCCATGATGAGAGTCAATGGAGATGATGACAGTGTTCGCGCCTTGAGCTTCTCTATGAT  
 TACTACATGGGTCCCAAGGAGAAGCGGATATTGCTCCAGCACTGGGGCAGGAATGACCAAGGAAAGA  
 GGTACTACCATGGCATGGAATAGAGACGGACCTCACTCCCTTGAAAGCCCCACACACCTCATGAAATT  
 CCTGACAGAGAACGTGTCTGGAACCCAGAGTACCCAGATTTGCTCAAGAAGAATAACCTGATGAGCTTG  
 GAGGGGCTTGGCCACCCCTGGCAAGGCAGCTCCCTCCCTGCAGGCCAGCAAGCTGGAGGCCGGCT  
 CTGTGGACAGCTACCTGTTACCCACCAGTATGATGATAATGGCTCCCTCAACTCCTGTTTGAGAG  
 CATTTCATGGGGTCCGCCACACAGCGCTGGCAGCCAGACAGCACCTTCAAAGATGACCCACAGGAGTCG  
 ATGCTCTTCCAGATATCCTGAAAACCTCCCGGAACCCCATGTCCAGAGGACTACCCAGCCTCAAAA  
 GTGACTTTGAATACACCTGGGCTCCCCAAAGCCATCCACATCAAGTCAGGCGAGTCACCCATGGCCTA  
 CCTCAACAAAGGCCAGTTCTACCCCGTCAACCCTGCGGACCCAGCAGGTGGCAAAGGCCCTTGCTTTGTC  
 TCCAACAAAGTCAAGAGTGTGGTGTGTTGTCTTCGACAATGAGAAGTCCCAGTAGAGCAGCTGCGCT  
 TCTGGAAGCACTGGCATTCCCGGCAACCCACTGCCAAGCAGCGGGTCATTGACGTGGTACTGCAAAGA  
 AAATTCAACACTGTGGAGCACATTGAGGAGTGGCCTATAATGCACTGTCTTTGTGTGGAACGTGAAT  
 GAAGAGCCAAGTGTTCATCGGGTAACTGTCTGAGCACAGACTTTTCTCACAAAAGGGGTGAAGG  
 GTGTCCCTGAACTGCAGATTGACACCTATGACTGTGGCTGGCAGTACTGAGCGCTGATACACCGTGC  
 TGTCTGCCAGATCAAGATCTTCTGTGACAAGGGAGCTGAGAGGAAGATGCGCGATGACGAGCGGAAGCAG  
 TTCGGGAGGAAGTCAAGTGCCTGACTCCAGCAACAGTGGCGTCAAGGGCTGCCTGCTGTGCGGCTTCA  
 GGGCAATGAGACGACCTACCTTCGCCCAGAGACTGACCTGGAGACGCCACCCGCTGTTTCATCCCAA  
 TGTGCACTTCTCCAGCCTGCAGCGCTCTGGAGGGCAGCCCCCTCGGCAGGACCCAGCAGCTCCAACAGG  
 CTGCTCTGAAGCGTACCTGCTCGCCCTCACTGAGGAGTTTGGCCTCTGCCCTCAAGCAGGCCAAGG  
 AAGGCGACCTTCCAGAGTCTGCTGTATGTGCGGAGGGAGACTGAGGAGGTGTTGACGCGCTCATGTT  
 GAAGCCCCAGACCTGAAGGGGCTGAGGAATGCGATCTCTGAGAAGTATGGGTTCCCTGAAGAGAACATT  
 TACAAAGTCTACAAGAAATGCAAGCGAGGAATCTTAGTCAACATGGACAACAACATCATTACGATTACA  
 GCAACCACGTCGCCTTCTGCTGGACATGGGGAGCTGGACGGCAAATTCAGATCATCCTTAAGGAGCT  
 G

**ACGCGT**ACGCGGCCGCTCGAGCAGAACTCATCTCAGAAGAGGATCTGGCAGCAAATGATATCCTGGATT  
 ACAAGGATGACGACGATAAGGTTAA

**Protein Sequence:**

>RC213012 representing NM\_021180  
 Red=Cloning site Green=Tags(s)

MWMNSILPIFLFRSVRLKNDPVLNQLKFSYSEDEAWKTYLENPLTAATKAMMRVNGDDDSVAALSFLYD  
 YYMGPKEKRILSSSTGGRNDQGRYYHGMEYETDLTPLESPTLHMKFLTENVSGTPEYDILLKNNLMSL  
 EGALPTPGKAAPLPAGPSKLEAGSVDSYLLPTTDMYDNGSLNSLFESIHGVPPTQRWQPDSTFKDDPQES  
 MLFPDILKTSPEPPCPEDYPSLKSDFEYTLGSPKAIHIKSGESPMAYLNKGQFYVPTLRTPAGGKGLALS  
 SNKVKSVVMVFDNEKVPVEQLRFWKHWSRQPTAKQRVIDVADCKENFNTVEHIEEVAYNALSFVWNVN  
 EEAKVFIGVNCSTDFSSQKGVKGVPLNLQIDTYDCGLGTERLVHRAVCQIKIFCDKGAERKMRDDEKQ  
 FRRKVKCPDSSNSGVKGCLLSGFRGNETTYLRPETDLETTPVLFIPNVHFSSLQRSGGAAPSAGPSSNR  
 LPLKRTCSPTFEFEPLPSKQAKEGDLQRVLLYVRRETEEVFDALMLKTPDLKGLRNAISEKYGFPEENI  
 YKYVKKCKRGILVNMDNIIQHYSNHVAFLLDMGELDGKIQIILKEL

**TRTRPLEQKLI**SEEDLAANDILDYKDDDDKV

Chromatograms: [https://cdn.origene.com/chromatograms/mk8069\\_e04.zip](https://cdn.origene.com/chromatograms/mk8069_e04.zip)

Restriction Sites: SgfI-MluI

Cloning Scheme:



ACCN: NM\_021180

ORF Size: 1821 bp

OTI Disclaimer: The molecular sequence of this clone aligns with the gene accession number as a point of reference only. However, individual transcript sequences of the same gene can differ through naturally occurring variations (e.g. polymorphisms), each with its own valid existence. This clone is substantially in agreement with the reference, but a complete review of all prevailing variants is recommended prior to use. [More info](#)

OTI Annotation: This clone was engineered to express the complete ORF with an expression tag. Expression varies depending on the nature of the gene.

Components: The ORF clone is ion-exchange column purified and shipped in a 2D barcoded Matrix tube containing 10ug of transfection-ready, dried plasmid DNA (reconstitute with 100 ul of water).

Reconstitution Method:

1. Centrifuge at 5,000xg for 5min.
2. Carefully open the tube and add 100ul of sterile water to dissolve the DNA.
3. Close the tube and incubate for 10 minutes at room temperature.
4. Briefly vortex the tube and then do a quick spin (less than 5000xg) to concentrate the liquid at the bottom.
5. Store the suspended plasmid at -20°C. The DNA is stable for at least one year from date of shipping when stored at -20°C.

RefSeq: [NM\\_021180.3](#), [NP\\_067003.2](#)

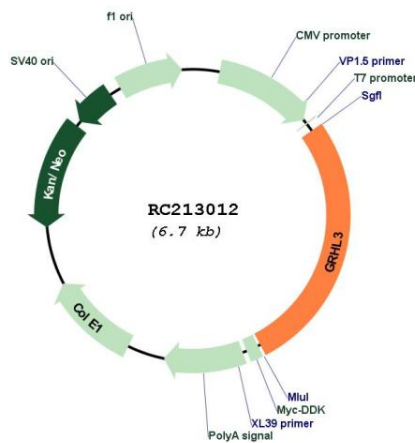
RefSeq Size: 2715 bp

RefSeq ORF: 1824 bp

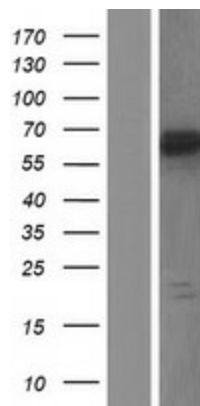
**Locus ID:** 57822  
**UniProt ID:** [Q8TE85](#)  
**Cytogenetics:** 1p36.11  
**Domains:** CP2  
**MW:** 68.2 kDa

**Gene Summary:** This gene encodes a member of the grainyhead family of transcription factors. The encoded protein may function as a transcription factor during development, and has been shown to stimulate migration of endothelial cells. Multiple transcript variants encoding distinct isoforms have been identified for this gene.[provided by RefSeq, Aug 2010]

### Product images:



Circular map for RC213012



Western blot validation of overexpression lysate (Cat# [LY412043]) using anti-DDK antibody (Cat# [TA50011-100]). Left: Cell lysates from untransfected HEK293T cells; Right: Cell lysates from HEK293T cells transfected with RC213012 using transfection reagent MegaTran 2.0 (Cat# [TT210002]).