

Product datasheet for RC213000

C1QL2 (NM_182528) Human Tagged ORF Clone

Product data:

Product Type: Expression Plasmids
Product Name: C1QL2 (NM_182528) Human Tagged ORF Clone
Tag: Myc-DDK
Symbol: C1QL2
Synonyms: C1QTNF10; CTRP10
Mammalian Cell Selection: Neomycin
Vector: pCMV6-Entry (PS100001)
E. coli Selection: Kanamycin (25 ug/mL)
ORF Nucleotide Sequence: >RC213000 representing NM_182528
 Red=Cloning site Blue=ORF Green=Tags(s)

TTTTGTAATACGACTCACTATAGGGCGGCCGGAATTCGTCGACTGGATCCGGTACCGAGGAGATCTGCC
 GCC**CGCATCGCC**

ATGGCGCTCGGGCTGCTCATCGCCGTGCCGCTGCTGCTGCAGGCGGCCCGCCGAGGCGCCGCGCACTATG
 AGATGATGGGCACCTGCCGCATGATCTGCGACCCTTAACTGCCGCGCCCGGGGAGCCCCGGGTGC
 AAAGGCGCAGCCACCCGACCCAGCACCAGCCGCTGGAAGTCATGCAGGACCTCAGCGCAACCCCTCT
 CCTCCTTTCATCCAGGGACCCAAGGGCGACCCGGGGCGACCGGGCAAGCCAGGGCCGCGGGGCCCTG
 GAGAGCCGGGCCCGCTGGACCCAGGGCCCTCCGGGAGAGAAGGGCGACTCGGGCGGGCCGGGTGCC
 AGGGCTGCAACTGACGGCGGGCACGGCCAGCGGCTCGGGGTGGTGGGCGCGGGCCGGGTAGGTGGC
 GATTCCGAGGGTGAAGTGACCAAGTGCAGTGCAGCGCCACCTTCAGCGGCCCAAGATCGCCTTCTATGTGG
 GTCTCAAGAGCCCCACGAAGGCTATGAGGTGCTGAAGTTCGATGACGTGGTCACCAACCTCGGCAATCA
 CTATGACCCACCCAGGGCAAGTTCAGCTGCCAGGTACCGGCATCTACTTCTTACCTACCACATCCTC
 ATGCGCGCGGGCAGCGCACCATGTGGCGGACCTCTGCAAGAACGGGCAAGTCCGGGCCAGCGCCA
 TTGCACAGGACCGCCAGCAGAACTACGACTACGCCAGTAACAGCGTGGTGTGCACTTGGATTAGGGGA
 CGAAGTGTATGTGAAGCTGGATGGCGGGAAGGCTCACGGAGGCAATAAACAAGTACAGCACGTTCTCG
 GGCTTTCTTGTACCCGAT

ACGCGTACGCGGGCGCTCGAGCAGAAACTCATCTCAGAAGAGGATCTGGCAGCAAATGATATCCTGGATT
 ACAAGGATGACGACGATAAGGTTAA



[View online »](#)

Protein Sequence: >RC213000 representing NM_182528
Red=Cloning site Green=Tags(s)

MALGLLLIAPLLLQAAPRGAAHYEMMGTCRMICDPYTAAPGGEPGAKAQPPGPSTAALVEMQDLSANPP
 PPFIQGPKGDPGRPGKPGPRPPGEPGPPGPRGPPGEGKGDSDRGLPGLQLTAGTASGVGVGGGAGVGG
 DSEGEVTSALSATFSGPKIAFYVGLKSPHEGYEVLFKDDVVTNLGNHYDPTTGKFSQVIRGIYFFTYHIL
 MRGGDGTSMWADLCKNGQVRASAI AQDADQNYDYASNSVVLHLDSGDEVVYKLDGGKAHGGNNNKYSTFS
 GFLLYPD

TRTRPLEQKLISEEDLAANDILDYKDDDDKV

Chromatograms: https://cdn.origene.com/chromatograms/mk8023_g09.zip

Restriction Sites: SgfI-MluI

Cloning Scheme:



ACCN: NM_182528

ORF Size: 861 bp

OTI Disclaimer: The molecular sequence of this clone aligns with the gene accession number as a point of reference only. However, individual transcript sequences of the same gene can differ through naturally occurring variations (e.g. polymorphisms), each with its own valid existence. This clone is substantially in agreement with the reference, but a complete review of all prevailing variants is recommended prior to use. [More info](#)

OTI Annotation: This clone was engineered to express the complete ORF with an expression tag. Expression varies depending on the nature of the gene.

Components: The ORF clone is ion-exchange column purified and shipped in a 2D barcoded Matrix tube containing 10ug of transfection-ready, dried plasmid DNA (reconstitute with 100 ul of water).

Reconstitution Method:

1. Centrifuge at 5,000xg for 5min.
2. Carefully open the tube and add 100ul of sterile water to dissolve the DNA.
3. Close the tube and incubate for 10 minutes at room temperature.
4. Briefly vortex the tube and then do a quick spin (less than 5000xg) to concentrate the liquid at the bottom.
5. Store the suspended plasmid at -20°C. The DNA is stable for at least one year from date of shipping when stored at -20°C.

RefSeq: [NM_182528.4](#)

RefSeq Size: 2066 bp

RefSeq ORF: 864 bp

Locus ID: 165257

UniProt ID: [Q7Z5L3](#)

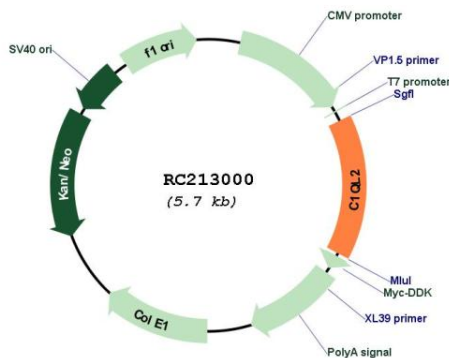
Cytogenetics: 2q14.2

Protein Families: Secreted Protein

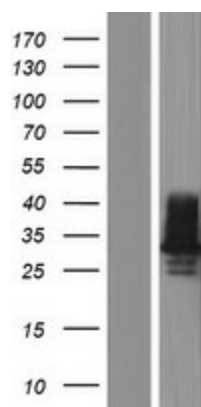
MW: 29.3 kDa

Gene Summary: May regulate the number of excitatory synapses that are formed on hippocampus neurons. Has no effect on inhibitory synapses (By similarity).[UniProtKB/Swiss-Prot Function]

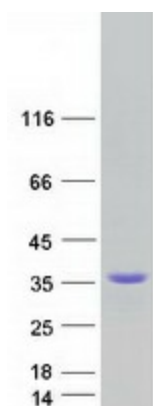
Product images:



Circular map for RC213000



Western blot validation of overexpression lysate (Cat# [LY405505]) using anti-DDK antibody (Cat# [TA50011-100]). Left: Cell lysates from untransfected HEK293T cells; Right: Cell lysates from HEK293T cells transfected with RC213000 using transfection reagent MegaTran 2.0 (Cat# [TT210002]).



Coomassie blue staining of purified C1QL2 protein (Cat# [TP313000]). The protein was produced from HEK293T cells transfected with C1QL2 cDNA clone (Cat# RC213000) using MegaTran 2.0 (Cat# [TT210002]).