

Product datasheet for **RC212997**

DTX2 (NM_001102594) Human Tagged ORF Clone

Product data:

Product Type:	Expression Plasmids
Product Name:	DTX2 (NM_001102594) Human Tagged ORF Clone
Tag:	Myc-DDK
Symbol:	DTX2
Synonyms:	RNF58
Mammalian Cell Selection:	Neomycin
Vector:	pCMV6-Entry (PS100001)
E. coli Selection:	Kanamycin (25 ug/mL)



[View online »](#)

ORF Nucleotide Sequence:

>RC212997 representing NM_001102594
 Red=Cloning site Blue=ORF Green=Tags(s)

TTTTGTAATACGACTCACTATAGGGCGGCCGGAATTCGTGACTGGATCCGGTACCGAGGAGATCTGCC
 GCC**CGGATCGCC**

ATGGCCATGGCCCAAGCCCTTCCTGGTGCAGGTGTACACCAGCCCCGGGCTGTGGCCGTGTGGGAAT
 GGCAGGACGGGCTGGGCACCTGGCACCCCTACAGTGCCACCGTCTGCAGCTTCATCGAGCAGCAGTTTGT
 CCAGCAGAAGGGCCAACGTTTTGGGCTTGGGAGCCTGGCCACAGCATCCCTTGGGCCAGGCAGACCCC
 TCGCTGGCCCTTACATTATTGACCTCCCCAGCTGGACCCAGTTCGCCAGGACACCGGCACCATGCGGG
 CTGTGCGGAGACACCTGTTCCCCAGCACTCAGCCCTGGCCGAGGTGTCGTCTGGGAGTGGCTGAGCGA
 CGATGGCTCCTGGACTGCCTATGAAGCCAGCGTCTGTGACTATCTGGAGCAGCAGGTGGCCAGGGGCAAC
 CAGCTCGTGGACTTGGCCCCCTGGGGTACAACACTACACTGTCAACTACACCACCCACACGCAGACCAACA
 AGACTTCCAGCTTCTGCCGACGCTGCGCGCCAAGCAGGGCCGCTTACCCGGTACCACCATCATCGC
 TCCGCCGGCCACACAGGCGTGCCTGCTTGGCACCAGTGCCTCAGTGGCAGCAGAATGGCCCCGTG
 TCAGGCCGCTACCGCCACTCCATGACCAACCTCCCTGCATACCCCGTCCCCAGCACCCCCACACAGGA
 CCGCTTCTGTGTTTGGGACCCACAGGCCCTTGCACCGTACAACAACCCCTCACTCTCCGGGGCCCGGTC
 TGCGCCAGGCTGAACACCACCAACGCCTGGGGCGCAGCTCCTCCTTCCCTGGGGAGCCAGCCCCTAC
 CGCTCCAGCCTCTCCACCTGGGACCGCAGCACCTGCCCCAGGATCCTCCACCTCCGGTGCAGTCAGTG
 CCTCCCTCCCCAGCGTCCCTCAAGCAGCCAGGGAGCGTCCCTGCCACTGTGCCATGCAGATGCCAAA
 GCCCAGCAGAGTCCAGCAGGCGCTCGCAGGCATGACGAGTGTCTGATGTAGCCATTGGACTCCCTGTG
 TGTCTTAGCCGCGCACCCAGCCACAGCCCTCCCGCTCCCGTCTGGCTTCCAAAAGTACGCGCTCAG
 TTAAGAGATTGAGGAAAATGTCCGTGAAAGGAGCGACCCGAAGCCAGAGCCAGCCAGCAGGTGCAT
 AAAAAACTACACGGAAGAGCTGAAAGTGCCCCAGATGAGGACTGCATCATCTGCATGGAGAAGCTGTCC
 ACAGCGTCTGGATACAGCGATGTGACTGACAGCAAGGCAATCGGGTCCCTAGCTGTGGGCCACCTACCA
 AGTGCAGCCATGCCTTCCACCTGCTGTGCCTCCTGGCCATGACTGCAACGGCAATAAGGATGGAAGTCT
 GCAGTGTCCCTCTGCAAAACCTATGAGAGAGAAGACGGGACCCAGCCAGGAAAGATGGAGGTA
 TTACGGTTCAGATGTGCTCCCGGCCACGAGGACTGCGGGACCATCCTCATAGTTTACAGCATTCCCC
 ATGGTATCCAGGGCCCTGAGCACCCCAATCCCGGAAAGCCGTTCACTGCCAGAGGGTTTCCCGCCAGTG
 CTACCTCCAGACAACGCCAGGGCCGCAAGTCTAGAGCTCCTGAAGGTGGCCTGGAAGAGGCGGCTC
 ATCTTACAGTGGCAGCTCCAGCACACGGGTGAGACGGACACCGTGGTATGGAACGAGATCCACCACA
 AGACAGAGATGGACCGCAACATTACGGGCCACGGCTATCCCGACCCCAACTACCTGCAGAACGTGCTGGC
 TGAGTGGCTGCCAGGGGGTGACCGAGGACTGCCTGGAGCAGCAG

ACGCGTACGCGGCCGCTCGAGCAGAACTCATCTCAGAAGAGGATCTGGCAGCAATGATATCCTGGATT
 ACAAGGATGACGACGATAAGGTTTAA

Protein Sequence:

>RC212997 representing NM_001102594
 Red=Cloning site Green=Tags(s)

MAMAPSPSLVQVYVSPAAYAVVWEWQDGLGTWHPYSATVCSFIEQQFVQQKQRFGLGSLAHSIPLGQADP
 SLAPYIIDLPSWTQFRQDTGTMRAVRRHLFPQHSAPGRGVVWEWLSDDGSWTAYEASVCDYLEQQVARGN
 QLVDLAPLGYNYTVNYTHTQTNKTSFCSRVRQAGPPYVTTIIAPPGHTGVACSCHQCLSGSRTGPV
 SGRYRHSMTNLPAYVPQHPHRTASVFGTHQAFAPYNKPSLSGARSAPRLNTTNAWGAAPPPLGSQPLY
 RSSLSHLGPQHLPPGSSTSGAVSASLPSGSPSSSPGVPATVPMQMPKPSRVQQALAGMTSVLMSAIGLPV
 CLSRAPQPTSPPARLASKSHGSKRLRKMSVKGATPKPEPEPEQVIKNYTEELKVPPEDECIICMEKLS
 TASGYSVDTDSKAIGSLAVGHLTKCSHAFHLLCLLAMYCNGNKGSLQCPCKTIYGEKGTQPQGMKV
 LRFQMSLPGHEDCGTILIVYSIPHGIQGPENPNPKPFTARGFPRQCYLPDQAQRKVLLELLKVAWKRRLL
 IFTVGTSSSTTGETDVTVVWNEIHHKTEMDRNIITGHGYPDPNYLQNVLAELAAQGVTEDCLEQQ

TRTRPLEQKLISEEDLAANDILDYKDDDDKV

Chromatograms: https://cdn.origene.com/chromatograms/mk6522_e06.zip
 Restriction Sites: SgfI-MluI
 Cloning Scheme:



ACCN: NM_001102594

ORF Size: 1866 bp

OTI Disclaimer: The molecular sequence of this clone aligns with the gene accession number as a point of reference only. However, individual transcript sequences of the same gene can differ through naturally occurring variations (e.g. polymorphisms), each with its own valid existence. This clone is substantially in agreement with the reference, but a complete review of all prevailing variants is recommended prior to use. [More info](#)

OTI Annotation: This clone was engineered to express the complete ORF with an expression tag. Expression varies depending on the nature of the gene.

Components: The ORF clone is ion-exchange column purified and shipped in a 2D barcoded Matrix tube containing 10ug of transfection-ready, dried plasmid DNA (reconstitute with 100 ul of water).

Reconstitution Method:

1. Centrifuge at 5,000xg for 5min.
2. Carefully open the tube and add 100ul of sterile water to dissolve the DNA.
3. Close the tube and incubate for 10 minutes at room temperature.
4. Briefly vortex the tube and then do a quick spin (less than 5000xg) to concentrate the liquid at the bottom.
5. Store the suspended plasmid at -20°C. The DNA is stable for at least one year from date of shipping when stored at -20°C.

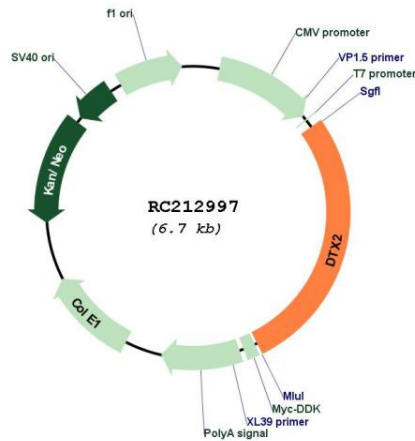
RefSeq: [NM_001102594.1](#), [NP_001096064.1](#)

RefSeq Size: 2715 bp

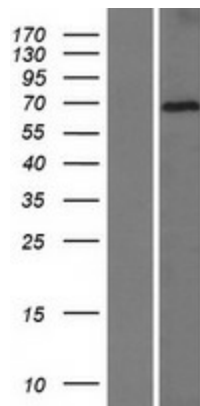
RefSeq ORF: 1869 bp

Locus ID: 113878
UniProt ID: [Q86UW9](#)
Cytogenetics: 7q11.23
Protein Families: Druggable Genome
Protein Pathways: Notch signaling pathway
MW: 67.1 kDa
Gene Summary: DTX2 functions as an E3 ubiquitin ligase (Takeyama et al., 2003 [PubMed 12670957]). [supplied by OMIM, Nov 2009]

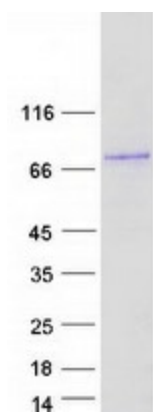
Product images:



Circular map for RC212997



Western blot validation of overexpression lysate (Cat# [LY420164]) using anti-DDK antibody (Cat# [TA50011-100]). Left: Cell lysates from untransfected HEK293T cells; Right: Cell lysates from HEK293T cells transfected with [RC213418] using transfection reagent MegaTran 2.0 (Cat# [TT210002]).



Coomassie blue staining of purified DTX2 protein (Cat# [TP312997]). The protein was produced from HEK293T cells transfected with DTX2 cDNA clone (Cat# RC212997) using MegaTran 2.0 (Cat# [TT210002]).