

## Product datasheet for **RC212993**

### FOLR2 (NM\_000803) Human Tagged ORF Clone

#### Product data:

**Product Type:** Expression Plasmids  
**Product Name:** FOLR2 (NM\_000803) Human Tagged ORF Clone  
**Tag:** Myc-DDK  
**Symbol:** FOLR2  
**Synonyms:** BETA-HFR; FBP; FBP/PL-1; FOLR1; FR-BETA; FR-P3; FRbeta  
**Mammalian Cell Selection:** Neomycin  
**Vector:** pCMV6-Entry (PS100001)  
**E. coli Selection:** Kanamycin (25 ug/mL)  
**ORF Nucleotide Sequence:** >RC212993 representing NM\_000803  
Red=Cloning site Blue=ORF Green=Tags(s)

TTTTGTAATACGACTCACTATAGGGCGCCGGAATTCGTCGACTGGATCCGGTACCGAGGAGATCTGCC  
GCC**CGATCGCC**

ATGGTCTGGAAATGGATGCCACTTCTGCTGCTTCTGGTCTGTGTAGCCACCATGTGCAGTGCCCAGGACA  
GGACTGATCTCCTCAATGTCTGTATGGATGCCAAGCACCACAAGACAAAGCCAGGTCCTGAGGACAAGCT  
GCATGACCAATGCAGTCCCTGGAAGAAGAATGCCTGCTGCACAGCCAGCACCAGCCAGGAGCTGCACAAG  
GACACCTCCCGCCTGTACAACTTAACTGGGACCCTGCGCAAGATGGAGCCCGCTGCAAGCGCCACT  
TCATCCAGGACACCTGTCTCTATGAGTGCTCACCAACCTGGGGCCCTGGATCCAGCAGGTAATCAGAG  
CTGGCGCAAAGAACGCTTCTGGATGTGCCCTTATGCAAAGAGGACTGTCAGCGCTGGTGGGAGGATTGT  
CACACCTCCCACACGTGCAAGAGCAACTGGCACAGAGGATGGGACTGGACCTCAGGATTAACAAGTGCC  
CAGCTGGGGCTCTCTGCCGACCTTTGAGTCTACTTCCCCTCCAGCTGCCCTTTGTGAAGGCCTCTG  
GAGTCACTCATACAAGGTCAGCAACTACAGCCGAGGGAGCGCCGCTGCATCCAGATGTGGTTTGATTCA  
GCCAGGGCAACCCCAACGAGGAAGTGGCGAGGTTCTATGCTGCAGCCATGCATGTGAATGCTGGTGAGA  
TGCTTCATGGGACTGGGGTCTCCTGCTCAGTCTGGCCCTGATGCTGCAACTCTGGCTCCTTGGC

**ACGCGT**ACGCGGCCGCTCGAGCAGAACTCATCTCAGAAGAGGATCTGGCAGCAAATGATATCCTGGATT  
ACAAGGATGACGACGATAAGGTTTAA



[View online »](#)

**Protein Sequence:** >RC212993 representing NM\_000803  
 Red=Cloning site Green=Tags(s)

MVWKWMPLLLLLVCVATMCSAQDRTDLLNVCMDAKHHKTKPGPEDKLHDQCSPWKKNACCTASTSQELHK  
 DTSRLYNFNWDHCGKMEPACKRHF IQDTCLYECSPLGPWIQQVNQSWRKERFLDVPLCKEDCQRWWEDC  
 HTSHTCKSNWHRGWDWTSGVNKCPAGALCRTFESYFPTPAALCEGLWSHSYKVSNSYSRGSGRCIQMWFDS  
 AQGNPNEEVARFYAAAMHVNAGEMLHGTGGLLLSLALMLQLWLLG

TRTRPLEQKLISEEDLAANDILDYKDDDDKV

**Chromatograms:** [https://cdn.origene.com/chromatograms/mk6172\\_h05.zip](https://cdn.origene.com/chromatograms/mk6172_h05.zip)

**Restriction Sites:** SgfI-MluI

**Cloning Scheme:**

Cloning sites used for ORF Shuttling:



\* The last codon before the Stop codon of the ORF

**ACCN:** NM\_000803

**ORF Size:** 765 bp

**OTI Disclaimer:** The molecular sequence of this clone aligns with the gene accession number as a point of reference only. However, individual transcript sequences of the same gene can differ through naturally occurring variations (e.g. polymorphisms), each with its own valid existence. This clone is substantially in agreement with the reference, but a complete review of all prevailing variants is recommended prior to use. [More info](#)

**OTI Annotation:** This clone was engineered to express the complete ORF with an expression tag. Expression varies depending on the nature of the gene.

**Components:** The ORF clone is ion-exchange column purified and shipped in a 2D barcoded Matrix tube containing 10ug of transfection-ready, dried plasmid DNA (reconstitute with 100 ul of water).

**Reconstitution Method:**

1. Centrifuge at 5,000xg for 5min.
2. Carefully open the tube and add 100ul of sterile water to dissolve the DNA.
3. Close the tube and incubate for 10 minutes at room temperature.
4. Briefly vortex the tube and then do a quick spin (less than 5000xg) to concentrate the liquid at the bottom.
5. Store the suspended plasmid at -20°C. The DNA is stable for at least one year from date of shipping when stored at -20°C.

**Note:** Plasmids are not sterile. For experiments where strict sterility is required, filtration with 0.22um filter is required.

**RefSeq:** [NM\\_000803.5](#)

**RefSeq Size:** 1119 bp

**RefSeq ORF:** 768 bp

**Locus ID:** 2350

**UniProt ID:** [P14207](#)

**Cytogenetics:** 11q13.4

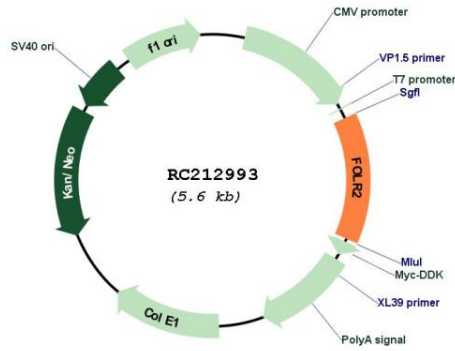
**Domains:** Folate\_rec

**Protein Families:** Druggable Genome, Secreted Protein

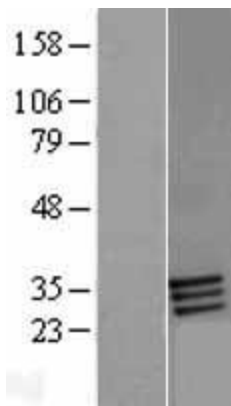
**MW:** 29.1 kDa

**Gene Summary:** The protein encoded by this gene is a member of the folate receptor (FOLR) family, and these genes exist in a cluster on chromosome 11. Members of this gene family have a high affinity for folic acid and for several reduced folic acid derivatives, and they mediate delivery of 5-methyltetrahydrofolate to the interior of cells. This protein has a 68% and 79% sequence homology with the FOLR1 and FOLR3 proteins, respectively. Although this protein was originally thought to be specific to placenta, it can also exist in other tissues, and it may play a role in the transport of methotrexate in synovial macrophages in rheumatoid arthritis patients. Multiple transcript variants that encode the same protein have been found for this gene. [provided by RefSeq, Jul 2008]

Product images:



Circular map for RC212993



Western blot validation of overexpression lysate (Cat# [LY400280]) using anti-DDK antibody (Cat# [TA50011-100]). Left: Cell lysates from untransfected HEK293T cells; Right: Cell lysates from HEK293T cells transfected with RC212993 using transfection reagent MegaTran 2.0 (Cat# [TT210002]).