

Product datasheet for **RC212990**

SPCA2 (ATP2C2) (NM_014861) Human Tagged ORF Clone

Product data:

| | |
|---------------------------|---|
| Product Type: | Expression Plasmids |
| Product Name: | SPCA2 (ATP2C2) (NM_014861) Human Tagged ORF Clone |
| Tag: | Myc-DDK |
| Symbol: | SPCA2 |
| Synonyms: | SPCA2 |
| Mammalian Cell Selection: | Neomycin |
| Vector: | pCMV6-Entry (PS100001) |
| E. coli Selection: | Kanamycin (25 ug/mL) |



[View online »](#)

ORF Nucleotide Sequence:

>RC212990 representing NM_014861
 Red=Cloning site Blue=ORF Green=Tags(s)

TTTTGTAATACGACTCACTATAGGGCGGCCGGGAATTCGTCGACTGGATCCGGTACCGAGGAGATCTGCC
 GCC**CGGATCGCC**

ATGGTCGAGGGACGCGTCTCCGAGTTCCTGAAGAACTCGGCTTCTCGGGCGGGGCCGCCAGTACCAGG
 CGCTGGAGAAGGACGAAGAGGAAGCCTTGATTGATGAACAGAGTGAGCTGAAAGCCATCGAGAAAGAGAA
 GAAGGTGACAGCCCTGCCCCCAAGGAAGCGTGCAAATGCCAGAAAGAGGATTTGGCCAGAGCGTTTTGT
 GTGGACTTACACACTGGGCTGTCCGAGTTCCTGGTGACGCAGCGCCGGCTGGCCCATGGCTGGAATGAGT
 TTGTTGCTGACAACAGCGAACCTGTGTGAAGAAATACCTGGATCAGTTTAAAGACCCCTGATCCTGCT
 GCTGCTGGGCTCTGCCCTGGTGTGAGTGTCTCACCAAGGAGTATGAGGACGCCGTCAGCATCGCCACGGCA
 GTGCTTGTGCGTGGTCACTGTGCCTTATCCAGGAGTACAGGTCGGAGAAATCTCTGGAAGAGCTGACCA
 AGATGGTTCCTCCAGAATGTAATGCCTAAGAGAAGGAAAACCTCCAGCACCTGCTTGTCTGAGAAGTGGT
 TCCTGGTGTATGTGTATCTCTCGATCGGAGACCGGATCCCTGCAGACATCCGACTCACTGAGGTACAG
 GACCTCTTGGTGGATGAATCCAGTTTACCGGGGAAGCCGAGCCATGTAGTAAAACAGACAGCCCTTGA
 CAGGCGGTGGGGACCTCACCCCTCAGCAACATCGTCTTCATGGGGACCTGGTGCAGTATGGGAGGGG
 CCAGGGGGTCTGATTGGAACAGGGGAAAGCTCTCAGTTCGGAGAAGTGTAAAGATGATGCAGGCTGAA
 GAGACACCTAAAACCTCTTTCAGAAAAGCATGGACAGGCTAGGAAAGCAACTGACACTCTTCTCCTTTG
 GCATAATCGGTCTCATATGCTCATTGGCTGGTGCAGGGAACAACCTCCTGAGTATGTTACAGATCGG
 GGTGAGCTGGTGTGGCGCCATTCCAGAGGGTCTGCCCATCGTCGTATGGTACGCTGGTCTCTGGGA
 GTGCTGCGGATGGCCAAGAAGCGGGTCACTGTGAAGAAGTTACCCATCGTGGAGACTTTAGTGTCTGCA
 GCGTCTCTGTTCTGACAAGACGGGGACTCTGACTGCCAATGAAATGACAGTGACCCAGCTGTAAACATC
 AGATGGGCTTCGTGCCGAGGTACGCGGAGTTGGGTATGACGGTCAAGGGACTGTGTCTTCTACCATCC
 AAGGAAGTCATTAAGGAATTTTCCAATGTCTCAGTGGGAAAGTTAGTGGAGGCGGGCTGTGTTGCCAACA
 ATGCGGTGATCAGAAAAGACCGCGTGTGGGGCAGCCACCGAGGGTGCATTGATGGCCCTGGCGATGAA
 GATGGACTTAAGTGATATTAATAATTCATATAAAGAAAAAAGAGATTCATTGAGTTCAGAGCAGAAG
 TGGATGGCGGTGAAATGCAGTCTGAAGACTGAGGATCAGGAAGACATTTACTTCATGAAAGGGCCCTGG
 AAGAGGTGATCCGCTACTGCACCATGTACAACAACGGGGGCATCCCTGCGCTGACGCCCCAGCAGAG
 GTCATTCTGCCTGCAGGAAGAGAAGAGGATGGGGTCTCGTGGTTCGGGTTGCGGGTGTGGCCCTGGCTTCTGGG
 CCCGAGCTGGGGCGGCTGACGTTTCTCGGTCTTGTGGGATCATTGACCCCCGAGAGTTGGCGTGAAGG
 AAGCAGTCCAGGTTCTCTCCGAGTCTGGTGTGTCTGTGAAGATGATAACGGGGGATGCCCTGGAGACGGC
 CTTGGCCATAGGAAGAAACATCGGCCTGTGCAACGGGAAGCTGCAAGCCATGTCCGGGGAGGAGGTGGAC
 AGCGTGGAGAAGGGCGAGCTGGCCGACCGCGTGGGGAAGGTGTCCGTGTTCTTCAGGACCAGCCAAAGC
 ACAAGCTCAAAATCATCAAGGCTCTGCAGGAGTCAAGGGCGATCGTGGCCATGACTGGGGATGGGGTGA
 CGACGCAGTGGCCCTGAAGTCTGCAGACATTGGGATCGCCATGGGGCAGACAGGGACGGACGTCAGCAA
 GAGGCCCAACATGATCCTGGTGGATGATGACTTCTCAGCCATCATGAATGCAGTGGAGGAAGGCAAGG
 GTATTTTTTACAACATCAAAAACCTTGTCCGATCCAGCTGAGCACGAGCATCTCCGCCCTGAGTCTCAT
 CACTCTGTCCACCGTGTCAACCTGCCAGCCCCCTCAACGCCATGCAGATCCTATGGATCAACATCATC
 ATGGATGGGCCACCGCGCAGAGCTTGGGGGTAGAGCCCGTTGACAAAGACGCCTTCAGGACGCCACCAC
 GGAGTGTGCGGGACACCATCCTCAGCAGAGCCCTCATCCTGAAGATCCTCATGTCCGCGGCCATCATCAT
 CAGCGGGACCTCTTTATCTTCTGGAAGGAGATGCCTGAAGACAGAGCAAGCACTCCCGCACCCAGCAGC
 ATGACGTTCACTTGTGTTTGTGTTTTCGATCTCTTCAACGCCCTTACCTGCCGCTCTCAGACCAAGCTGA
 TATTTGAGATCGGCTTTCTCAGGAACCACATGTTCTCTACTCCGCTCTGGGGTCCATCCTGGGGCAGCT
 GGCGGTCAATTTACATCCCCCGCTGCAGAGGGTCTCCAGACGGAGAACCTGGGAGCGCTTGATTTGCTG
 TTTTAACTGGATTGGCCTCATCCGTCTCATTTTGTGAGAGCTCCTCAAACATATGTGAAAAATACTGTT
 GCAGCCCCAAGAGAGTCCAGATGCACCCTGAAGATGTG

AG**CGGACCG**ACGCGTACGCGGCCGCTCGAGCAGAACTCATCTCAGAAGAGGATCTGGCAGCAAATGATATCC
 TGGATTACAAGGATGACGACGATAAGGTTTAA

Protein Sequence: >RC212990 representing NM_014861
 Red=Cloning site Green=Tags(s)

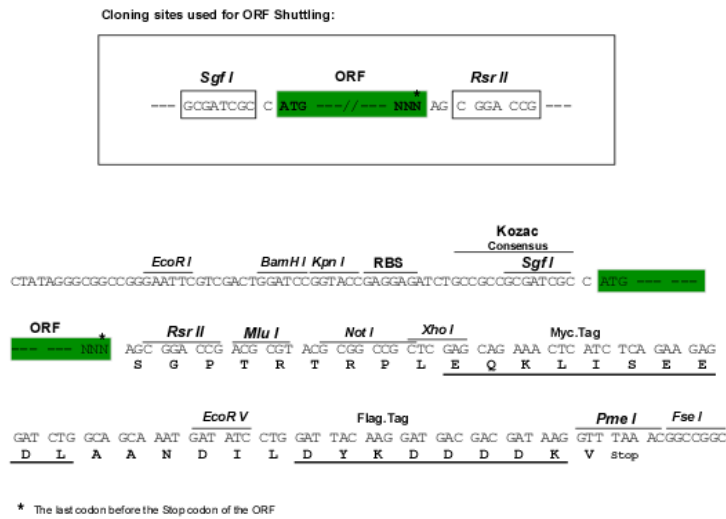
MVEGRVSEFLKKLGFSGGGRQYQALEKDEEEALIDEQSELKAIEKEKKVTALPPKEACKCQKEDLARAFCLV
 VDLHTGLSEFSVTQRRLAHGWNEFVADNSEPVWKKYLDQFKNPLILLLLGSALVSVLTKEYEDAVSIATA
 VLVVVTVAFIQEYRSEKSLEELTKMVPPECNCLREGKLOHLLARELVPGDVVSLSIGDRIPADIRLTVT
 DLLVDESSFTGEAEPCKTDSPLTGGDDLTTLSNIVFMGTLVQYGRGQGVVIGTGESSQFGEVFKMMQAE
 ETPKTPKQKSMQDLGKQLTLFSFGIIGLIMLIGWSQKQLLSMFTIGVSLAVAAIPEGLPIVVMVTLVGL
 VLRMAKKRVIVKKLPIVETLGCSSVLCSDKTGTLTANEMTVTQLVTSGLRAEVSGVGYDQGTVCLLPS
 KEVIKEFSNVSVGKLV EAGCVANNAVIRKNAVMGQPTGALMALAMKMDLSDIKNSYIRKKEIPFSSEQK
 WMAVKCSLKTEDQEDIYFMKGAL EEVIRYCTMYNNGGIPLPLTPQQRSFCLQEEKRMGSLGLRVLALASG
 PELGRLTFLGLVGIIDPPRVGVKEAVQVLSSEGSVVKMITGDALETALAIGRNIGLCNGKLQAMSGEEVD
 SVEKGELADRVGKVSFVRTSPKHKLKIIKALQESGAI VAMTGDGVNDAVALKSADIGIAMGQTGTDVSK
 EAANMILVDDDFSAIMNAVEEGKIFYNIKNFVRFQLSTISALSLITLSTVFNLP SPLNAMQILWINII
 MDGPPAQLGVEPVKDAFRQPPRSVRDITL SRALILKILMSAAIIISGTLFIFWKEMPEDRASTPRTTT
 MTFTCFVFFDLFNALTCRSQTKLIFEIGFLRNHMFLYSVLGSILGQLAVIYIPPLQRVFTENLGALDLL
 FLTGLASSVFI LSELLKCEKYCCSPKRVMHPEDV

SGP TRRRLEQKLI SEEDLAANDILDYKDDDDKV

Chromatograms: https://cdn.origene.com/chromatograms/mk8009_b02.zip

Restriction Sites: SgfI-RsrII

Cloning Scheme:

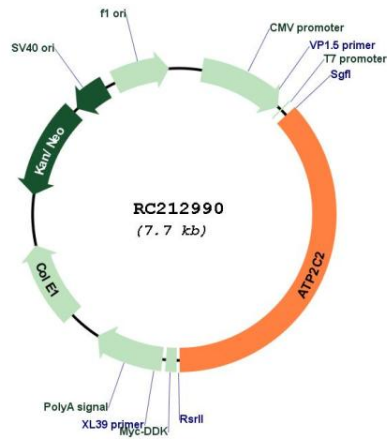


ACCN: NM_014861

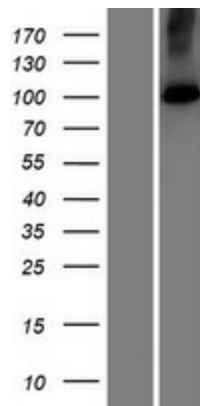
ORF Size: 2838 bp

| | |
|-------------------------------|---|
| OTI Disclaimer: | The molecular sequence of this clone aligns with the gene accession number as a point of reference only. However, individual transcript sequences of the same gene can differ through naturally occurring variations (e.g. polymorphisms), each with its own valid existence. This clone is substantially in agreement with the reference, but a complete review of all prevailing variants is recommended prior to use. More info |
| OTI Annotation: | This clone was engineered to express the complete ORF with an expression tag. Expression varies depending on the nature of the gene. |
| Components: | The ORF clone is ion-exchange column purified and shipped in a 2D barcoded Matrix tube containing 10ug of transfection-ready, dried plasmid DNA (reconstitute with 100 ul of water). |
| Reconstitution Method: | <ol style="list-style-type: none"> 1. Centrifuge at 5,000xg for 5min. 2. Carefully open the tube and add 100ul of sterile water to dissolve the DNA. 3. Close the tube and incubate for 10 minutes at room temperature. 4. Briefly vortex the tube and then do a quick spin (less than 5000xg) to concentrate the liquid at the bottom. 5. Store the suspended plasmid at -20°C. The DNA is stable for at least one year from date of shipping when stored at -20°C. |
| RefSeq: | NM_014861.2 |
| RefSeq Size: | 3600 bp |
| RefSeq ORF: | 2841 bp |
| Locus ID: | 9914 |
| UniProt ID: | O75185 |
| Cytogenetics: | 16q24.1 |
| Domains: | E1-E2_ATPase, Cation_ATPase_N, Hydrolase, Cation_ATPase_C |
| Protein Families: | Druggable Genome, Transmembrane |
| MW: | 103 kDa |
| Gene Summary: | This magnesium-dependent enzyme catalyzes the hydrolysis of ATP coupled with the transport of calcium.[UniProtKB/Swiss-Prot Function] |

Product images:



Circular map for RC212990



Western blot validation of overexpression lysate (Cat# [LY414989]) using anti-DDK antibody (Cat# [TA50011-100]). Left: Cell lysates from untransfected HEK293T cells; Right: Cell lysates from HEK293T cells transfected with RC212990 using transfection reagent MegaTran 2.0 (Cat# [TT210002]).