

## Product datasheet for RC212984

### I-Myc (MYCL) (NM\_001033082) Human Tagged ORF Clone

#### Product data:

Product Type:	Expression Plasmids
Product Name:	I-Myc (MYCL) (NM_001033082) Human Tagged ORF Clone
Tag:	Myc-DDK
Symbol:	I-Myc
Synonyms:	bHLHe38; L-Myc; LMYC; MYCL1
Mammalian Cell Selection:	Neomycin
Vector:	pCMV6-Entry (PS100001)
E. coli Selection:	Kanamycin (25 ug/mL)
ORF Nucleotide Sequence:	>RC212984 representing NM_001033082 Red=Cloning site Blue=ORF Green=Tags(s)

TTTTGTAATACGACTCACTATAGGGCGGCCGGAATTCGTCGACTGGATCCGGTACCGAGGAGATCTGCC  
GCC**CGATCGCC**

ATGTGCGTGTGTGCTGGCTGCCGGGTGCCCGAGCCGGCGGGGAGCCGGTCCGCTCCAGGTGGCGGGCG  
GCTGGAGCGAGGGAGCGGACATGGACTACGACTCGTACCAGCACTATTTCTACGACTATGACTGCGGGGA  
GGATTTCTACCGCTCCACGGCGCCAGCGAGGACATCTGGAAGAAATTCGAGCTGGTCCATCGCCCCC  
ACGTCGCCGCCCTGGGGTTGGTCCCAGCGCAGGGACCCGGCCCCGGGATTGGTCCCCGGAGCCGT  
GGCCCGAGGGTGCACCGGAGACGAAGCGAATCCCGGGCCACTCGAAAGGCTGGGGCAGGAACACGC  
CTCCATCATACGCCGTGACTGCATGTGGAGCGGCTTCTCGGCCCGGGAACGGCTGGAGAGAGCTGTGAGC  
GACCGGCTCGCTCCTGGCGGCCCGGGGAACCCGCCAAGGCGTCCGCGCCCCGGACTGCACTCCCA  
GCCTCGAAGCCGCAACCCGGCGCCCGCCGCCCTGTCCGCTGGGCGAACCAGAGCCAGGCCTGCTC  
CGGGTCCGAGAGCCCAAGCGACTCGGAGAATGAAGAAATTGATGTTGTGACAGTAGAGAAGAGGCAGTCT  
CTGGGTATTCGGAAGCCGGTCAACATCACGGTGCAGCAGACCCCTGGATCCCTGCATGAAGCATTTC  
ACATCTCCATCCATCAGCAACAGCACAACATGCTGCCGTTTCTCCAGAAAGCTGCTCCCAAGAAGA  
GGCTTCAGAGAGGGTCCCCAAGAAGAGGTTCTGGAGAGAGATGCTGCAGGGGAAAAGGAAGATGAGGAG  
GATGAAGAGATTGTGAGTCCCCACCTGTAGAAAGTGAGGCTGCCAGTCCCTGCCACCCAAACCTGTCA  
GTTCTGATACTGAGGATGTGACCAAGAGGAAGAATCACAACCTCCTGGAGCGCAAGAGGGCGGAATGACCT  
CGGTTCCGCGATTCTTGGCGCTGAGGGACAGGTGCCACCCCTGGCCAGCTGCTCCAGGCCCCCAAGTA  
GTGATCCTAAGCAAGCCTTGAATACTTGCAAGCCCTGGTGGGGCTGAGAAGAGGATGGCTACAGAGA  
AAAGACAGCTCCGATGCCGGCAGCAGCAGTTGCAGAAAAGAAATTCATACCTCACTGGCTAC

**ACGCGT**ACGCGGCCGCTCGAGCAGAACTCATCTCAGAAGAGGATCTGGCAGCAATGATATCTGGATT  
ACAAGGATGACGACGATAAGGTTTAA



[View online »](#)

**Protein Sequence:** >RC212984 representing NM\_001033082  
Red=Cloning site Green=Tags(s)

MCVCAGCRAAPSRRGAGPLQVAGGWSEGADMDYDSYQHIFYDYDCGEDFYRSTAPSEDIWKKFELVPSPPTSPWPGLGPGAGDPAPGIGPPEPWPGGCTGDEAESRGHSGWGRNYASIIRRDCMWSGFSARERLERAVSDRLAPGAPRGNPPKASAAPDCTPSLEAGNPAPAAPCPLGEPKTQACSGSESPSDSENEEIDVVTVEKRQSLGIRKPVTITVRADPLDPCMKHFHISIHQQQHNYAARFPPESCSQEEASERGPQEEVLERDAAGEKEDEE DEEIVSPPPVSEAAQSCHPKPVSSDTEVDVTKRKNHNFLEKRRNDLRSRFLALRDQVPTLASCCKAPKVILSKALEYLQALVGAEKRMATEKRQLRCRQQQLKRIAYLTGY

TRTRPLEQKLISEEDLAANDILDYKDDDDKV

**Chromatograms:** [https://cdn.origene.com/chromatograms/mk8054\\_h12.zip](https://cdn.origene.com/chromatograms/mk8054_h12.zip)

**Restriction Sites:** SgfI-MluI

**Cloning Scheme:**



**ACCN:** NM\_001033082

**ORF Size:** 1182 bp

**OTI Disclaimer:** The molecular sequence of this clone aligns with the gene accession number as a point of reference only. However, individual transcript sequences of the same gene can differ through naturally occurring variations (e.g. polymorphisms), each with its own valid existence. This clone is substantially in agreement with the reference, but a complete review of all prevailing variants is recommended prior to use. [More info](#)

**OTI Annotation:** This clone was engineered to express the complete ORF with an expression tag. Expression varies depending on the nature of the gene.

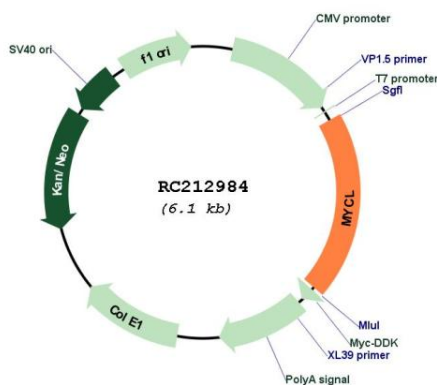
**Components:** The ORF clone is ion-exchange column purified and shipped in a 2D barcoded Matrix tube containing 10ug of transfection-ready, dried plasmid DNA (reconstitute with 100 ul of water).

**Reconstitution Method:**

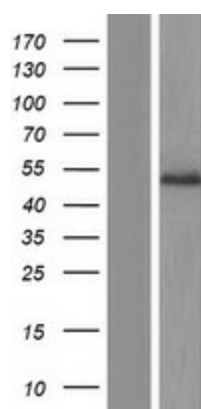
1. Centrifuge at 5,000xg for 5min.
2. Carefully open the tube and add 100ul of sterile water to dissolve the DNA.
3. Close the tube and incubate for 10 minutes at room temperature.
4. Briefly vortex the tube and then do a quick spin (less than 5000xg) to concentrate the liquid at the bottom.
5. Store the suspended plasmid at -20°C. The DNA is stable for at least one year from date of shipping when stored at -20°C.

**RefSeq:** [NM\\_001033082.3](#)  
**RefSeq Size:** 3258 bp  
**RefSeq ORF:** 1185 bp  
**Locus ID:** 4610  
**UniProt ID:** [P12524](#)  
**Cytogenetics:** 1p34.2  
**Protein Families:** Druggable Genome, Transcription Factors  
**MW:** 43.24 kDa

**Product images:**



Circular map for RC212984



Western blot validation of overexpression lysate (Cat# [LY422362]) using anti-DDK antibody (Cat# [TA50011-100]). Left: Cell lysates from untransfected HEK293T cells; Right: Cell lysates from HEK293T cells transfected with RC212984 using transfection reagent MegaTran 2.0 (Cat# [TT210002]).