

## Product datasheet for RC212974

### HRH4 (NM\_021624) Human Tagged ORF Clone

#### Product data:

Product Type:	Expression Plasmids
Product Name:	HRH4 (NM_021624) Human Tagged ORF Clone
Tag:	Myc-DDK
Symbol:	HRH4
Synonyms:	AXOR35; BG26; GPCR105; GPRv53; H4; H4R; HH4R
Mammalian Cell Selection:	Neomycin
Vector:	pCMV6-Entry (PS100001)
E. coli Selection:	Kanamycin (25 ug/mL)
ORF Nucleotide Sequence:	>RC212974 representing NM_021624 Red=Cloning site Blue=ORF Green=Tags(s)

TTTTGTAATACGACTCACTATAGGGCGGCCGGAATTCGTCGACTGGATCCGGTACCGAGGAGATCTGCC  
GCC**CGATCGCC**

ATGCCAGATACTAATAGCACAATCAATTTACTAAGCACTCGTGTACTTTAGCATTTCCTTATGTCCT  
TAGTAGCTTTTGTATAATGCTAGGAAATGCTTTGGTCATTTAGCTTTTGTGGTGGACAAAACCTTAG  
ACATCGAAGTAGTATTTTTTTCTAACTTGGCCATCTCTGACTCTTTGTGGTGTGATCTCCATTCT  
TTGTACATCCCTCACACGCTGTTTGAATGGGATTTTGGAAAGGAAATCTGTGATTTTGGCTCACTACTG  
ACTATCTGTTATGTACAGCATCTGTATATAACATTGTCCTCATCAGCTATGATCGATACCTGTCAGTCTC  
AAATGCTGTGCTTATAGAACTCAACATACTGGGGCTTGAAGATTGTTACTCTGATGGTGGCCGTTTGG  
GTGCTGGCCTTCTTAGTGAATGGCCAATGATTCTAGTTTCAGAGTCTTGAAGGATGAAGGTAGTGAAT  
GTGAACCTGGATTTTTTCGGAATGGTACATCCTTGCCATCACATCATTCTTGAATTCGTGATCCCACT  
CATCTTAGTCGCTTATTTCAACATGAATATTTATTTGGAGCCTGTGGAAGCGTGATCATCTCAGTAGGTGC  
CAAAGCCATCCTGGACTGACTGCTGTCTTCCAACATCTGTGGACACTCATTAGAGGTAGACTATCTT  
CAAGGAGATCTCTTCTGCATCGACAGAAGTTCCTGCATCCTTTCATTAGAGAGACAGAGGAGAAAAGAG  
TAGTCTCATGTTTTCTCAAGAACAAGATGAATAGCAATACAATTGCTTCAAAAATGGTTCCTTCTCC  
CAATCAGATTCTGTAGCTTTCCAAAGGGAACATGTTGAAGCTTTAGAGCCAGGAGATTAGCCAAGT  
CACTGGCCATTCTTTAGGGTTTTTGGCTGTTTGGCTGGCTCCATATTCTCTGTTCAACAATTGTCCTTTC  
ATTTTATTCCTCAGCAACAGGTCCTAAATCAGTTTGGTATAGAATTGCATTTTGGCTTCAGTGGTCAAT  
TCCTTTGTCAATCCTCTTTTGTATCCATTGTGTACAAGCGCTTTCAAAGGCTTTCTTGAAAATATTTT  
GTATAAAAAGCAACCTCTACCATCACACACAGTCGGTCAGTATCTTCT

**ACGCGT**ACGCGGCCGCTCGAGCAGAACTCATCTCAGAAGAGGATCTGGCAGCAATGATATCCTGGATT  
ACAAGGATGACGACGATAAGGTTTAA



[View online >](#)

**Protein Sequence:** >RC212974 representing NM\_021624  
Red=Cloning site Green=Tags(s)

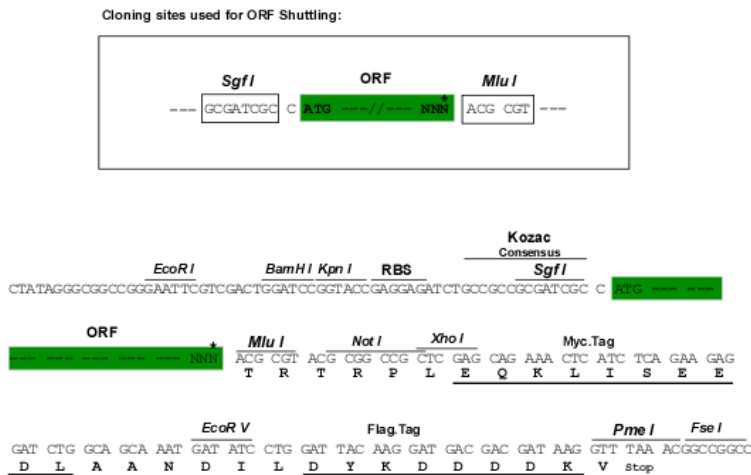
MPDTNSTINLSLSTRVTLAFFMSLVAFAIMLGNALVILAFVVDKNLRHRSSYFFLNLAISDFVGVISIP  
 LYIPHTLFEWDFGKEICVFWLTTDYLLCTASVYNIIVLSYDRYLSVSNVSYRTQHTGVLKIVTLMVAVW  
 VLAFLVNGPMILVSESWKDEGSECEPGFFSEWYILAITSFLEFVIVPILVAYFNMNIYWSLWKRDLHLSRC  
 QSHPLTAVSSNICGHSFRGRLSSRRSLASTEVPASFHSEQRKRKSSLMFSSRTKMNSNTIASKMGFSFS  
 QSDSVALHQREHVELLRARRLAKSLAILLGVFAVCWAPYSLFTIIVLSFYSSATGPKSVWYRIAFWLQWFN  
 SFVNPLLYPLCHKRFQKAFKIFCIKKQPLPSQHSRSVSS

TRTRPLEQKLISEEDLAANDILDYKDDDDKV

**Chromatograms:** [https://cdn.origene.com/chromatograms/mk6096\\_f07.zip](https://cdn.origene.com/chromatograms/mk6096_f07.zip)

**Restriction Sites:** SgfI-MluI

**Cloning Scheme:**



\* The last codon before the Stop codon of the ORF

**ACCN:** NM\_021624

**ORF Size:** 1170 bp

**OTI Disclaimer:** The molecular sequence of this clone aligns with the gene accession number as a point of reference only. However, individual transcript sequences of the same gene can differ through naturally occurring variations (e.g. polymorphisms), each with its own valid existence. This clone is substantially in agreement with the reference, but a complete review of all prevailing variants is recommended prior to use. [More info](#)

**OTI Annotation:** This clone was engineered to express the complete ORF with an expression tag. Expression varies depending on the nature of the gene.

**Components:** The ORF clone is ion-exchange column purified and shipped in a 2D barcoded Matrix tube containing 10ug of transfection-ready, dried plasmid DNA (reconstitute with 100 ul of water).

**Reconstitution Method:**

1. Centrifuge at 5,000xg for 5min.
2. Carefully open the tube and add 100ul of sterile water to dissolve the DNA.
3. Close the tube and incubate for 10 minutes at room temperature.
4. Briefly vortex the tube and then do a quick spin (less than 5000xg) to concentrate the liquid at the bottom.
5. Store the suspended plasmid at -20°C. The DNA is stable for at least one year from date of shipping when stored at -20°C.

**RefSeq:** [NM\\_021624.4](#)

**RefSeq Size:** 3689 bp

**RefSeq ORF:** 1173 bp

**Locus ID:** 59340

**UniProt ID:** [Q9H3N8](#)

**Cytogenetics:** 18q11.2

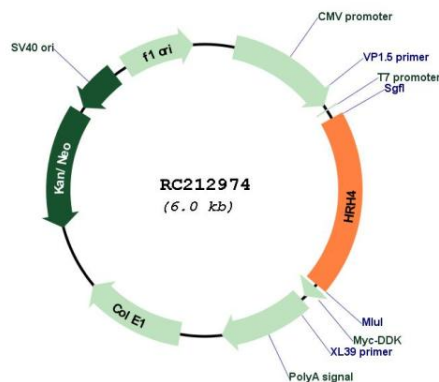
**Protein Families:** Druggable Genome, GPCR, Transmembrane

**Protein Pathways:** Neuroactive ligand-receptor interaction

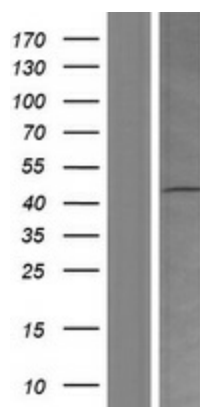
**MW:** 44.3 kDa

**Gene Summary:** Histamine is a ubiquitous messenger molecule released from mast cells, enterochromaffin-like cells, and neurons. Its various actions are mediated by a family of histamine receptors, which are a subset of the G-protein coupled receptor superfamily. This gene encodes a histamine receptor that is predominantly expressed in haematopoietic cells. The protein is thought to play a role in inflammation and allergy responses. Multiple transcript variants encoding different isoforms have been found for this gene. [provided by RefSeq, May 2009]

### Product images:



Circular map for RC212974



Western blot validation of overexpression lysate (Cat# [LY411975]) using anti-DDK antibody (Cat# [TA50011-100]). Left: Cell lysates from untransfected HEK293T cells; Right: Cell lysates from HEK293T cells transfected with RC212974 using transfection reagent MegaTran 2.0 (Cat# [TT210002]).