

Product datasheet for **RC212971**

TAF1 48 (TAF1A) (NM_005681) Human Tagged ORF Clone

Product data:

Product Type:	Expression Plasmids
Product Name:	TAF1 48 (TAF1A) (NM_005681) Human Tagged ORF Clone
Tag:	Myc-DDK
Symbol:	TAF1 48
Synonyms:	MGC:17061; RAFI48; SL1; TAFI48
Mammalian Cell Selection:	Neomycin
Vector:	pCMV6-Entry (PS100001)
E. coli Selection:	Kanamycin (25 ug/mL)



[View online »](#)

ORF Nucleotide Sequence:

>RC212971 representing NM_005681
 Red=Cloning site Blue=ORF Green=Tags(s)

TTTTGTAATACGACTCACTATAGGGCGGCCGGAATTCGTCGACTGGATCCGGTACCGAGGAGATCTGCC
 GCC**CGCATCGCC**

ATGAGTGATTTTCAGTGAAGAATTAAGGGCCTGTGACAGATGATGAAGAAGTGGAAACATCTGTGCTCA
 GTGGTGCAGGAATGCATTTTCTTGCTTCAAACATACGTAGAACTGTGGCCATTGGAGGGAAAAGGAG
 GAAGGATTTTGCTCAGACAACAAGTGCTTGTAAAGTTTATCCAAGAAGCTCTGCTGAAGCACCATGG
 CAGCAAGCTGCAGAATACATGTACAGTTATTTTTCAGACCTTGAAGATTCAGATAGCTACAAAAGGCAGG
 CTGCACCTGAGATTATTTGGAAGCTCGGAAGTGAATTCTATTTTATCATCCAAAAGCAACATGGAGAG
 TTTCAATACTTTTGCTAACCGGATGAAAAATTTGGCGTCATGAATTATTTAAAGATCTCCTTACAACAT
 GCATTATACCTTTCGCATCATGGAATGCTTAAAGATGCTAAGAGAAATCTGAGTGAGGCAGAGACATGGA
 GACATGGTGAATAACGCTTCCCGGAAATTAATCAACCTTATTCAGGCCTATAAAGGGCTTTTACA
 GTATTATACCTGGTCTGAAAAGAAGATGGAATTGTCAAAGCTTGATAAGGATGATTATGCTTACAATGCA
 GTAGCCACAGGATGTGTTCAACCACAGCTGGAAGACATCTGCAAATATTTCTGCATTGATTAATAATCCTG
 GAGTTTGGGACCTTTTGTGAAGAGTTATGTAGAAATGCTGGAATTCTATGGGGATCGAGATGGAGCCCA
 AGAGGTAATCACCATTATGCATATGATGAAAAGTTCCATCAAATCAAATGCCATATCTACTTATAC
 AACTTTCTAAAGAGACAGAAGGCACCAAGATCAAATTTGATAAGTGTGCTTAAGATTTTGTATCAGATTG
 TACCATCTCATAAATGATGTTGGAATTCATACATTACTTAGAAAATCAGAAAAAGAAGAACACCGTAA
 ACTGGGTTGGAGGATATTTGGAGTCTTAGATTTTGGCGGATGCACTAAGAATATAACTGCTTGGAAA
 TACTTGGCAAAATATCTGAAAAATCTTAATGGGAAACCACCTTGCCTGGTTCAGAAGAGTGGAACT
 CCAGGAAAAACTGGTGGCCAGGGTTTCATTTTCAGCTACTTTTGGGCAAAAAGTGAATGGAAGGAAGATC
 AGCTTTGGCCTGTGAGAAAGCTTTTGTGGCTGGTTTACTGTTAGGAAAAGGTTGTAGATATTTCCGGTAT
 ATTTTAAAGCAAGATCACCAAATCTTAGGGAAGAAAATTAAGCGGATGAAGAGATCTGTGAAAAATACA
 GTATTGTAATCCAAGACTC

ACGCGTACGCGGCCGCTCGAGCAGAACTCATCTCAGAAGAGGATCTGGCAGCAAATGATATCCTGGATT
 ACAAGGATGACGACGATAAGGTTTAA

Protein Sequence:

>RC212971 representing NM_005681
 Red=Cloning site Green=Tags(s)

MSDFSEELKGPVTDDEEVETSVLSGAGMHFPWLQTYVETVAIGGKRRKDFAQTTSACLSFIQEALLKHQW
 QQAAEYMYSYFQTLESDSYKRQAPEIWKLGSEILFYHPKSNMESFNTFANRMKNIGVMNYLKISLQH
 ALYLLHHGMLKDAKRNLSEAETWRHGENTSSREILINLIQAYKGLLQYYTWSEKKMELSKLDKDDYAYNA
 VAQDVFNHWSKTSANISALIKIPGVWDPFVKSYVEMLEFYGDRDGAQEVL TNYAYDEKFPSPNAHIYLY
 NFLKRQKAPRSKLSVLKILYQIVPSHKLMEFHTLLRKSEKEEHRKLGLEVLFGVLDFACTKNITAWK
 YLAKYLKNILMGNHLAWVQEEWNSRKNWPGFHFYSYFWAKSDWKEDTALACEKAFVAGLLLGKGCYFRY
 ILKQDHQILGKKIKRMKRSVKKYSIVNPRL

TRTRPLEQKLI SEEDLAANDILDYKDDDDKV

Chromatograms:

https://cdn.origene.com/chromatograms/mk6122_d12.zip

Restriction Sites:

Sgfl-Mlul

Cloning Scheme:


ACCN: NM_005681

ORF Size: 1350 bp

OTI Disclaimer: The molecular sequence of this clone aligns with the gene accession number as a point of reference only. However, individual transcript sequences of the same gene can differ through naturally occurring variations (e.g. polymorphisms), each with its own valid existence. This clone is substantially in agreement with the reference, but a complete review of all prevailing variants is recommended prior to use. [More info](#)

OTI Annotation: This clone was engineered to express the complete ORF with an expression tag. Expression varies depending on the nature of the gene.

Components: The ORF clone is ion-exchange column purified and shipped in a 2D barcoded Matrix tube containing 10ug of transfection-ready, dried plasmid DNA (reconstitute with 100 ul of water).

Reconstitution Method:

1. Centrifuge at 5,000xg for 5min.
2. Carefully open the tube and add 100ul of sterile water to dissolve the DNA.
3. Close the tube and incubate for 10 minutes at room temperature.
4. Briefly vortex the tube and then do a quick spin (less than 5000xg) to concentrate the liquid at the bottom.
5. Store the suspended plasmid at -20°C. The DNA is stable for at least one year from date of shipping when stored at -20°C.

RefSeq: [NM_005681.1](#)

RefSeq Size: 1893 bp

RefSeq ORF: 1353 bp

Locus ID: 9015

UniProt ID: [Q15573](#)

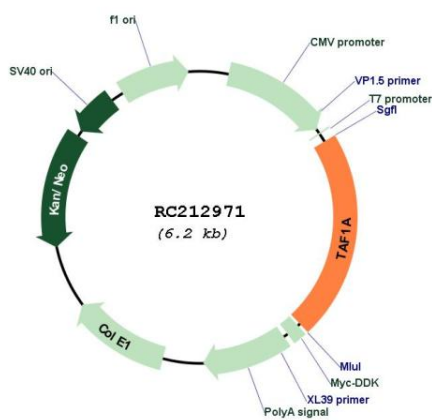
Cytogenetics: 1q41

Protein Families: Transcription Factors

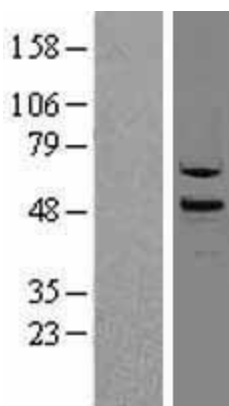
MW: 52.5 kDa

Gene Summary: This gene encodes a subunit of the RNA polymerase I complex, Selectivity Factor I (SLI). The encoded protein is a TATA box-binding protein-associated factor that plays a role in the assembly of the RNA polymerase I preinitiation complex. Alternate splicing results in multiple transcript variants encoding multiple isoforms.[provided by RefSeq, Jan 2011]

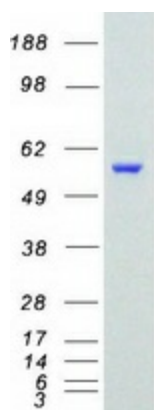
Product images:



Circular map for RC212971



Western blot validation of overexpression lysate (Cat# [LY401732]) using anti-DDK antibody (Cat# [TA50011-100]). Left: Cell lysates from untransfected HEK293T cells; Right: Cell lysates from HEK293T cells transfected with RC212971 using transfection reagent MegaTran 2.0 (Cat# [TT210002]).



Coomassie blue staining of purified TAF1A protein (Cat# [TP312971]). The protein was produced from HEK293T cells transfected with TAF1A cDNA clone (Cat# RC212971) using MegaTran 2.0 (Cat# [TT210002]).