

Product datasheet for RC212968L2

C19orf28 (MFSD12) (NM_001042680) Human Tagged Lenti ORF Clone

Product data:

Product Type:	Expression Plasmids
Product Name:	C19orf28 (MFSD12) (NM_001042680) Human Tagged Lenti ORF Clone
Tag:	mGFP
Symbol:	C19orf28
Synonyms:	C19orf28; PP3501
Mammalian Cell Selection:	None
Vector:	pLenti-C-mGFP (PS100071)
E. coli Selection:	Chloramphenicol (34 ug/mL)
ORF Nucleotide Sequence:	The ORF insert of this clone is exactly the same as(RC212968).
Restriction Sites:	SgfI-MluI
Cloning Scheme:	

Cloning sites used for ORF Shuttling:



* The last codon before the Stop codon of the ORF.

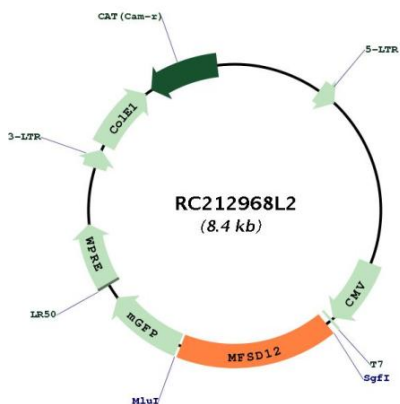
ACCN:	NM_001042680
ORF Size:	1419 bp



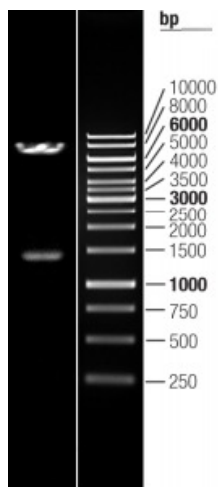
[View online »](#)

OTI Disclaimer:	The molecular sequence of this clone aligns with the gene accession number as a point of reference only. However, individual transcript sequences of the same gene can differ through naturally occurring variations (e.g. polymorphisms), each with its own valid existence. This clone is substantially in agreement with the reference, but a complete review of all prevailing variants is recommended prior to use. More info
OTI Annotation:	This clone was engineered to express the complete ORF with an expression tag. Expression varies depending on the nature of the gene.
Components:	The ORF clone is ion-exchange column purified and shipped in a 2D barcoded Matrix tube containing 10ug of transfection-ready, dried plasmid DNA (reconstitute with 100 ul of water).
Reconstitution Method:	<ol style="list-style-type: none">1. Centrifuge at 5,000xg for 5min.2. Carefully open the tube and add 100ul of sterile water to dissolve the DNA.3. Close the tube and incubate for 10 minutes at room temperature.4. Briefly vortex the tube and then do a quick spin (less than 5000xg) to concentrate the liquid at the bottom.5. Store the suspended plasmid at -20°C. The DNA is stable for at least one year from date of shipping when stored at -20°C.
RefSeq:	NM_001042680.1 , NP_001036145.1
RefSeq Size:	2082 bp
RefSeq ORF:	1421 bp
Locus ID:	126321
Cytogenetics:	19p13.3
Protein Families:	Transmembrane
MW:	51 kDa
Gene Summary:	Transporter that mediates the import of cysteine into melanosomes, thereby regulating skin pigmentation (PubMed:33208952). In melanosomes, cysteine import is required both for normal levels of cystine, the oxidized dimer of cysteine, and provide cysteine for the production of the cysteinyl dopas used in pheomelanin synthesis, thereby regulating skin pigmentation (PubMed:33208952). Also catalyzes import of cysteine into lysosomes in non-pigmented cells (PubMed:33208952).[UniProtKB/Swiss-Prot Function]

Product images:



Circular map for RC212968L2



Double digestion of RC212968L2 using SgfI and MluI