

Product datasheet for RC212963L4

FOLR3 (NM_000804) Human Tagged Lenti ORF Clone

Product data:

Product Type:	Expression Plasmids
Product Name:	FOLR3 (NM_000804) Human Tagged Lenti ORF Clone
Tag:	mGFP
Symbol:	FOLR3
Synonyms:	FR-G; FR-gamma; FRgamma; gamma-hFR
Mammalian Cell Selection:	Puromycin
Vector:	pLenti-C-mGFP-P2A-Puro (PS100093)
E. coli Selection:	Chloramphenicol (34 ug/mL)
ORF Nucleotide Sequence:	The ORF insert of this clone is exactly the same as(RC212963).
Restriction Sites:	SgfI-MluI
Cloning Scheme:	

Cloning sites used for ORF Shuttling:



* The last codon before the Stop codon of the ORF.

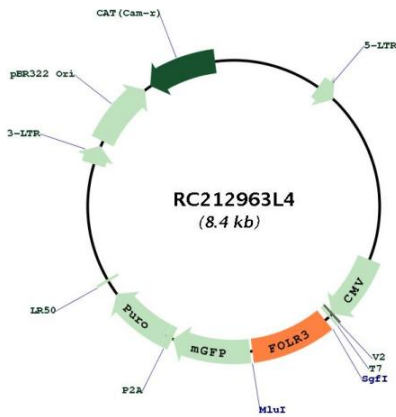
ACCN:	NM_000804
ORF Size:	735 bp



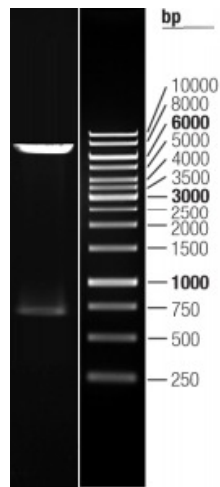
[View online »](#)

OTI Disclaimer:	The molecular sequence of this clone aligns with the gene accession number as a point of reference only. However, individual transcript sequences of the same gene can differ through naturally occurring variations (e.g. polymorphisms), each with its own valid existence. This clone is substantially in agreement with the reference, but a complete review of all prevailing variants is recommended prior to use. More info
OTI Annotation:	This clone was engineered to express the complete ORF with an expression tag. Expression varies depending on the nature of the gene.
Components:	The ORF clone is ion-exchange column purified and shipped in a 2D barcoded Matrix tube containing 10ug of transfection-ready, dried plasmid DNA (reconstitute with 100 ul of water).
Reconstitution Method:	<ol style="list-style-type: none">1. Centrifuge at 5,000xg for 5min.2. Carefully open the tube and add 100ul of sterile water to dissolve the DNA.3. Close the tube and incubate for 10 minutes at room temperature.4. Briefly vortex the tube and then do a quick spin (less than 5000xg) to concentrate the liquid at the bottom.5. Store the suspended plasmid at -20°C. The DNA is stable for at least one year from date of shipping when stored at -20°C.
RefSeq:	NM_000804.2
RefSeq Size:	858 bp
RefSeq ORF:	738 bp
Locus ID:	2352
UniProt ID:	P41439
Cytogenetics:	11q13.4
Domains:	Folate_rec
Protein Families:	Druggable Genome, Secreted Protein
MW:	27.7 kDa
Gene Summary:	This gene encodes a member of the folate receptor (FOLR) family of proteins, which have a high affinity for folic acid and for several reduced folic acid derivatives, and mediate delivery of 5-methyltetrahydrofolate to the interior of cells. Expression of this gene may be elevated in ovarian and primary peritoneal carcinoma. This gene is present in a gene cluster on chromosome 11. Alternative splicing results in multiple transcript variants. [provided by RefSeq, Dec 2015]

Product images:



Circular map for RC212963L4



Double digestion of RC212963L4 using SgfI and MluI