

Product datasheet for RC212954

SCML1 (NM_001037540) Human Tagged ORF Clone

Product data:

Product Type:	Expression Plasmids
Product Name:	SCML1 (NM_001037540) Human Tagged ORF Clone
Tag:	Myc-DDK
Symbol:	SCML1
Mammalian Cell Selection:	Neomycin
Vector:	pCMV6-Entry (PS100001)
E. coli Selection:	Kanamycin (25 ug/mL)
ORF Nucleotide Sequence:	>RC212954 representing NM_001037540 Red=Cloning site Blue=ORF Green=Tags(s)

TTTTGTAATACGACTCACTATAGGGCGGCCGGAATTCGTCGACTGGATCCGGTACCGAGGAGATCTGCC
GCC**CGATCGCC**

ATGATGTCTAACAGCTCCAGTGAAATCGATGTGATAAAAAACAAGAATACCTACTTACGATGAAGATGACA
ACACTATTTCTTTATGCGTATGAAACAAAACCTGAATTTGTCAATAAAGAACCGAATATTGTATCTGACGC
ATCCTGTAATACTGAAGAGCACTGAAGACAGTTGATGATGTCTTATTCATTGCCAGGTTATATATGAT
GCTCTGCAAAACCTGGATAAGAAGATTGATGTATTTCGTAGAAAGTTTCAAAAATCCAACGTTTCCATG
CGAGATCCCTGTGGACAAATCATAAGCGATATGGATATAAAAAGCATTCTTACCGGTTGTTAAAAAGCT
TAAACTCCAGAAAATGAAGAAAAATGAGGTTTACGAGACATTCTCTACCCTGAAAGTTACAGCCCACT
TTACCAGTGTCAAGGCGTGAGAATAATCCCGAGCAACCTTCCAAGGCCATCCTTTTGCATGGAAGAAT
ACCAGCGAGCTGAGCTGGAGGAGGACCCGATCCTCAGCCGCACTCCGAGTCCAGTGCATCCCTCAGATTT
CTCTGAGCATAATTGTCAGCCGTTATATGCATCTGATGGTGAACGTATGGTTCTTCTCAGGGCTCTGC
CTTGCAACCCTCGGGCTGACAGCATCCACAACACTTACTCAACTGACCATGCTTCTGCAGCACCACTT
CAGTTACAAGGTCACCAGTTGAAAATGACGGTTACATAGAGGAAGGAAGCATCACTAAGCACCTTCAAC
CTGGTCCGTGGAAGCAGTGGTCTATTTCTAAAACAAACAGATCCTCTTGCAATTATGCCCTTTGTCGAC
CTTTTCAAGCCATGAAATTGACGGGAAGGCTCTGCTCTACTCAGAGTGACGTGTTGCTGAAGCACT
TGGGGTGAAGCTGGGAACGGCTGTGAAGCTATGCTACTACATTGACCGACTTAAACAAGGAAAATGCTT
TGAAAAT

ACGCGTACGCGGCCGCTCGAGCAGAACTCATCTCAGAAGAGGATCTGGCAGCAAATGATATCCTGGATT
ACAAGGATGACGACGATAAGGTTTAA



[View online »](#)

Protein Sequence: >RC212954 representing NM_001037540
Red=Cloning site Green=Tags(s)

MMSNSSEIDVIKTRIPTYDEDDNTILYAYETKPEFVNKEPNIVSDASCNTEEQKLTVDVLIHCQVIYD
 ALQNLDDKIDVIRRKVSKIQRFHARSLWTNHKRYGYKKHSYRLVKKLKQMKKNEVYETFSYPEYSPT
 LPVSRRENNSPNLPRPFCMEEYQRAELEEDPILSRTPSPVHPSPDFSEHNCQPYASDGATYGSSSLC
 LGNPRADSIHNTYSTDHASAAPPSVTRSPVENDGYIEEGSITKHPSTWSVEAVVFLKQTDPLALCPLVD
 LFRSHEIDGKALLLLTSDVLLKHLGVKLGTAVKLCYYIDRLKQKCFEN

TRTRPLEQKLISEEDLAANDILDYKDDDDKV

Chromatograms: https://cdn.origene.com/chromatograms/mk8052_e12.zip

Restriction Sites: Sgfl-MluI

Cloning Scheme:

Cloning sites used for ORF Shuttling:



* The last codon before the Stop codon of the ORF

ACCN: NM_001037540

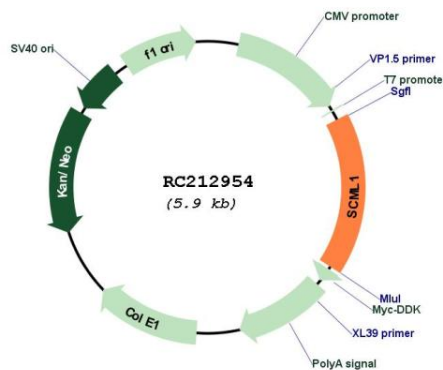
ORF Size: 987 bp

OTI Disclaimer: Due to the inherent nature of this plasmid, standard methods to replicate additional amounts of DNA in E. coli are highly likely to result in mutations and/or rearrangements. Therefore, OriGene does not guarantee the capability to replicate this plasmid DNA. Additional amounts of DNA can be purchased from OriGene with batch-specific, full-sequence verification at a reduced cost. Please contact our customer care team at custsupport@origene.com or by calling 301.340.3188 option 3 for pricing and delivery.

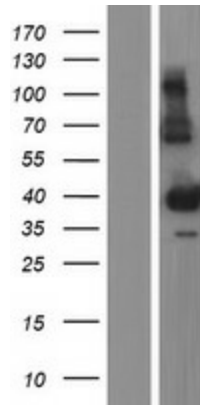
The molecular sequence of this clone aligns with the gene accession number as a point of reference only. However, individual transcript sequences of the same gene can differ through naturally occurring variations (e.g. polymorphisms), each with its own valid existence. This clone is substantially in agreement with the reference, but a complete review of all prevailing variants is recommended prior to use. [More info](#)

OTI Annotation:	This clone was engineered to express the complete ORF with an expression tag. Expression varies depending on the nature of the gene.
Components:	The ORF clone is ion-exchange column purified and shipped in a 2D barcoded Matrix tube containing 10ug of transfection-ready, dried plasmid DNA (reconstitute with 100 ul of water).
Reconstitution Method:	<ol style="list-style-type: none"> 1. Centrifuge at 5,000xg for 5min. 2. Carefully open the tube and add 100ul of sterile water to dissolve the DNA. 3. Close the tube and incubate for 10 minutes at room temperature. 4. Briefly vortex the tube and then do a quick spin (less than 5000xg) to concentrate the liquid at the bottom. 5. Store the suspended plasmid at -20°C. The DNA is stable for at least one year from date of shipping when stored at -20°C.
RefSeq:	<u>NM_001037540.3</u>
RefSeq Size:	2923 bp
RefSeq ORF:	990 bp
Locus ID:	6322
UniProt ID:	<u>Q9UN30</u>
Cytogenetics:	Xp22.13
Protein Families:	Transcription Factors
MW:	37.3 kDa
Gene Summary:	Putative Polycomb group (PcG) protein. PcG proteins act by forming multiprotein complexes, which are required to maintain the transcriptionally repressive state of homeotic genes throughout development. May be involved in spermatogenesis during sexual maturation (By similarity).[UniProtKB/Swiss-Prot Function]

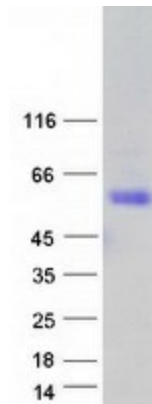
Product images:



Circular map for RC212954



Western blot validation of overexpression lysate (Cat# [LY421922]) using anti-DDK antibody (Cat# [TA50011-100]). Left: Cell lysates from untransfected HEK293T cells; Right: Cell lysates from HEK293T cells transfected with RC212954 using transfection reagent MegaTran 2.0 (Cat# [TT210002]).



Coomassie blue staining of purified SCML1 protein (Cat# [TP312954]). The protein was produced from HEK293T cells transfected with SCML1 cDNA clone (Cat# RC212954) using MegaTran 2.0 (Cat# [TT210002]).