

Product datasheet for RC212939

LRRN4CL (NM_203422) Human Tagged ORF Clone

Product data:

Product Type:	Expression Plasmids
Product Name:	LRRN4CL (NM_203422) Human Tagged ORF Clone
Tag:	Myc-DDK
Symbol:	LRRN4CL
Mammalian Cell Selection:	Neomycin
Vector:	pCMV6-Entry (PS100001)
E. coli Selection:	Kanamycin (25 ug/mL)
ORF Nucleotide Sequence:	>RC212939 representing NM_203422 Red=Cloning site Blue=ORF Green=Tags(s)

CTATAGGGCGGCCGGGAATTCGTGCGACTGGATCCGGTACCGAGGAGATCTGCCGCCGCGATCGCCGGCCG
GCC

ATGCTGGGCTCTCCCTGCCTTCTGTGGCTCCTGGCCGTGACCTTCTTGGTCCCAGAGCTCAGCCCTTGG
CCCCTCAAGACTTTGAAGAAGAGGAGGCAGATGAGACTGAGACGGCGTGGCCGCTTTGCCGGCTGTCCC
CTGCGACTACGACCACTGCCGACACCTGCAGGTGCCCTGCAAGGAGCTACAGAGGGTCGGGCCGGCGGCC
TGCTGTGCCCCAGGACTCTCCAGCCCCGCCAGCCGCCGACCCGCCGCGCATGGGAGAAGTGCGCATTG
CGGCCGAAGAGGGCCGCGCAGTGGTCCACTGGTGTGCCCTTCTCCCGGTCTCCACTACTGGCTGCT
GCTTTGGGACGGCAGCGAGGCTGCGCAGAAGGGGCCCCCGCTGAACGCTACGGTCCGCGAGGCCGAAGT
AAGGGGTGAAGCCAGGGGGCATTATGTGCTTTGCGTAGTGGCCGCTAACGAGGCCGGGCAAGCCGCG
TGCCCCAGGCTGGAGGAGAGGGCCTCGAGGGGGCCGACATCCCTGCCTTCGGGCCTTGACGCCGCTTGC
GGTGCCGCCCAACCCCGCACTCTGGTCCACGCGCCGTCGGGGTGGGCACGGCCCTGGCCCTGCTAAGC
TGTGCCGCCCTGGTGTGGCACTTCTGCCTGCGCGATCGCTGGGGCTGCCCGCCGAGCCGCCGCCGAG
CCGCAGGGGGCGTC

ACGCGTACGCGGCCGCTCGAGCAGAAACTCATCTCAGAAGAGGATCTGGCAGCAAATGATATCCTGGATT
ACAAGGATGACGACGATAAGGTTTAA



[View online »](#)

Protein Sequence: >RC212939 representing NM_203422
Red=Cloning site Green=Tags(s)

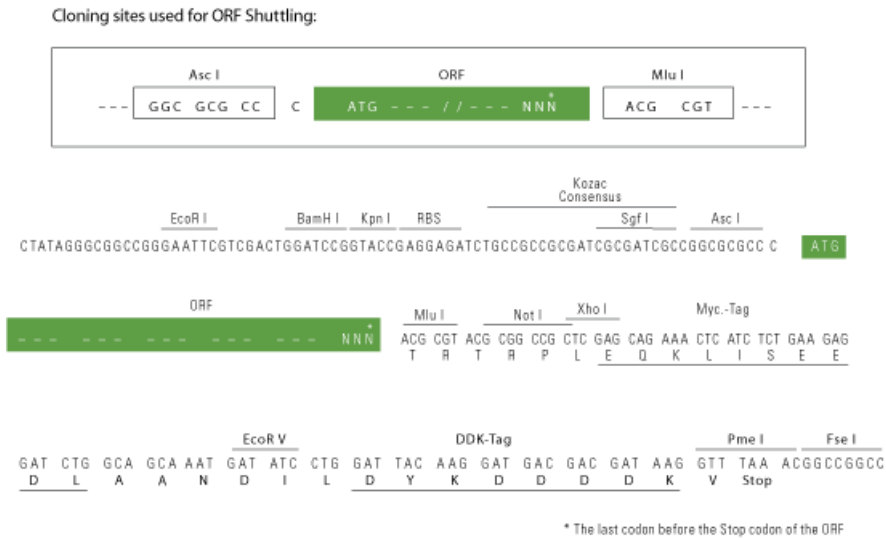
MLGSPCLLWLLAVTFLVPRAQLAPQDFEEEEADETETAWPPLPAVPCDYDHRHLQVPCKELQRVGPAA
 CLCPGLSSPAQPPDPPRMGEVRIAAEEGRAVVHWCAPFSPVLHYWLLLDWGSEAAQKGPPLNATVRRRAEL
 KGLKPGGIYVVCVVAANEAGASRVQAGGEGLEGADIPAFGPCSRLAVPPNPRTLVAHAVGVGTALALLS
 CAALVWHFCLDRWGCPRRAAARAAGAL

TRTRPLEQKLISEEDLAANDILDYKDDDDKV

Chromatograms: https://cdn.origene.com/chromatograms/ja1435_h11.zip

Restriction Sites: AscI-MluI

Cloning Scheme:



ACCN: NM_203422

ORF Size: 714 bp

OTI Disclaimer: The molecular sequence of this clone aligns with the gene accession number as a point of reference only. However, individual transcript sequences of the same gene can differ through naturally occurring variations (e.g. polymorphisms), each with its own valid existence. This clone is substantially in agreement with the reference, but a complete review of all prevailing variants is recommended prior to use. [More info](#)

OTI Annotation: This clone was engineered to express the complete ORF with an expression tag. Expression varies depending on the nature of the gene.

Components: The ORF clone is ion-exchange column purified and shipped in a 2D barcoded Matrix tube containing 10ug of transfection-ready, dried plasmid DNA (reconstitute with 100 ul of water).

- Reconstitution Method:**
1. Centrifuge at 5,000xg for 5min.
 2. Carefully open the tube and add 100ul of sterile water to dissolve the DNA.
 3. Close the tube and incubate for 10 minutes at room temperature.
 4. Briefly vortex the tube and then do a quick spin (less than 5000xg) to concentrate the liquid at the bottom.
 5. Store the suspended plasmid at -20°C. The DNA is stable for at least one year from date of shipping when stored at -20°C.

RefSeq: [NM_203422.4](#)

RefSeq Size: 2429 bp

RefSeq ORF: 717 bp

Locus ID: 221091

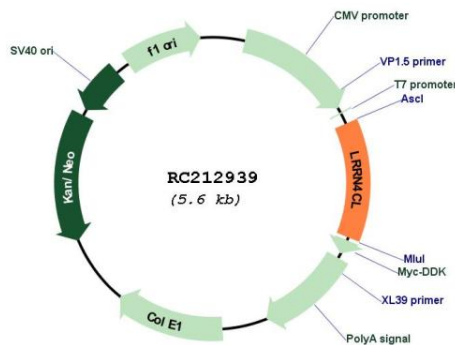
UniProt ID: [Q8ND94](#)

Cytogenetics: 11q12.3

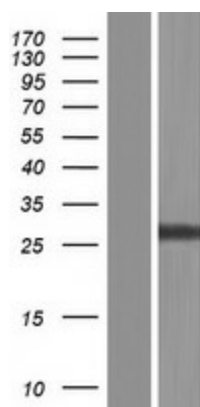
Protein Families: Transmembrane

MW: 25.1 kDa

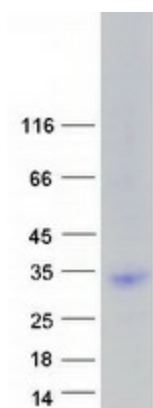
Product images:



Circular map for RC212939



Western blot validation of overexpression lysate (Cat# [LY404286]) using anti-DDK antibody (Cat# [TA50011-100]). Left: Cell lysates from untransfected HEK293T cells; Right: Cell lysates from HEK293T cells transfected with RC212939 using transfection reagent MegaTran 2.0 (Cat# [TT210002]).



Coomassie blue staining of purified LRRN4CL protein (Cat# [TP312939]). The protein was produced from HEK293T cells transfected with LRRN4CL cDNA clone (Cat# RC212939) using MegaTran 2.0 (Cat# [TT210002]).