

Product datasheet for **RC212930**

C1ORF151 (MINOS1) (NM_001032363) Human Tagged ORF Clone

Product data:

Product Type: Expression Plasmids
Product Name: C1ORF151 (MINOS1) (NM_001032363) Human Tagged ORF Clone
Tag: Myc-DDK
Symbol: C1ORF151
Synonyms: C1orf151; Mic10; MINOS1; MIO10
Mammalian Cell Selection: Neomycin
Vector: pCMV6-Entry (PS100001)
E. coli Selection: Kanamycin (25 ug/mL)
ORF Nucleotide Sequence: >RC212930 ORF sequence
Red=Cloning site Blue=ORF Green=Tags(s)

TTTTGTAATACGACTCACTATAGGGCGGCCGGAATTCGTCGACTGGATCCGGTACCGAGGAGATCTGCC
GCC**CGATCGCC**

ATGTCTGAGTCGGAGCTCGGCAGGAAGTGGACCGGTGTCTGGCGGATCGGGTCGTGAAGATAGGTACTG
GTTTTGGATTAGGAATTGTTTTCTCACTTACCTTCTTTAAAGAAGAATGTGGCCATTAGCCTTCGGTTC
TGGCATGGGATTAGGAATGGCTTATTCCAAGTGCAGCATGATTCCAGGCTCCATATCTCTACATGGA
AAATATGTCAAAGAGCAGGAGCAG

ACGCGTACGCGGCCGCTCGAGCAGAACTCATCTCAGAAGAGGATCTGGCAGCAAATGATATCCTGGATT
ACAAGGATGACGACGATAAGGTTTAA

Protein Sequence: >RC212930 protein sequence
Red=Cloning site Green=Tags(s)
MSESELGRKWDRCLADAVVKIGTGFGLGIVFSLTFFKRRMWPLAFGSGMGLGMAYSNCQHDFQAPYLLHG
KYVKEQEQ

TRTRPLEQKLISEEDLAANDILDYKDDDDKV

Chromatograms: https://cdn.origene.com/chromatograms/mk6454_b10.zip

Restriction Sites: Sgfl-MluI



[View online »](#)

Cloning Scheme:


ACCN: NM_001032363

ORF Size: 234 bp

OTI Disclaimer: The molecular sequence of this clone aligns with the gene accession number as a point of reference only. However, individual transcript sequences of the same gene can differ through naturally occurring variations (e.g. polymorphisms), each with its own valid existence. This clone is substantially in agreement with the reference, but a complete review of all prevailing variants is recommended prior to use. [More info](#)

OTI Annotation: This clone was engineered to express the complete ORF with an expression tag. Expression varies depending on the nature of the gene.

Components: The ORF clone is ion-exchange column purified and shipped in a 2D barcoded Matrix tube containing 10ug of transfection-ready, dried plasmid DNA (reconstitute with 100 ul of water).

- Reconstitution Method:**
1. Centrifuge at 5,000xg for 5min.
 2. Carefully open the tube and add 100ul of sterile water to dissolve the DNA.
 3. Close the tube and incubate for 10 minutes at room temperature.
 4. Briefly vortex the tube and then do a quick spin (less than 5000xg) to concentrate the liquid at the bottom.
 5. Store the suspended plasmid at -20°C. The DNA is stable for at least one year from date of shipping when stored at -20°C.

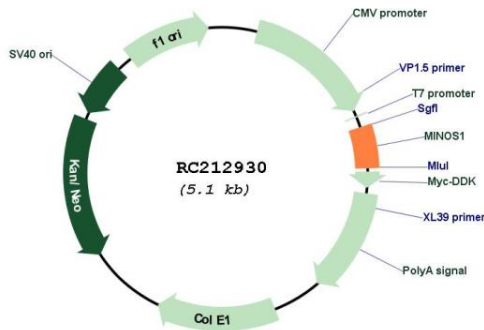
Note: Plasmids are not sterile. For experiments where strict sterility is required, filtration with 0.22um filter is required.

RefSeq: [NM_001032363.4](#)

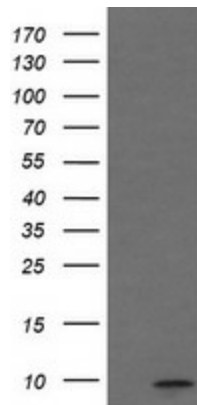
RefSeq Size: 3726 bp

RefSeq ORF:	237 bp
Locus ID:	440574
UniProt ID:	Q5TGZ0
Cytogenetics:	1p36.13
Protein Families:	Transmembrane
MW:	8.8 kDa
Gene Summary:	Component of the MICOS complex, a large protein complex of the mitochondrial inner membrane that plays crucial roles in the maintenance of crista junctions, inner membrane architecture, and formation of contact sites to the outer membrane.[UniProtKB/Swiss-Prot Function]

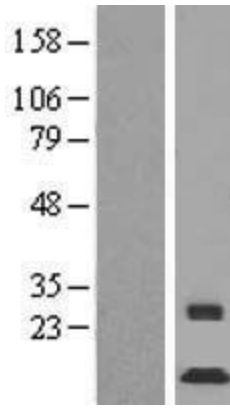
Product images:



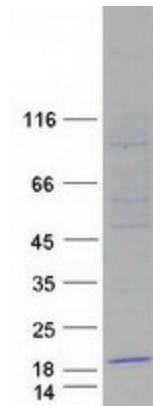
Circular map for RC212930



HEK293T cells were transfected with the pCMV6-ENTRY control (Cat# [PS100001], Left lane) or pCMV6-ENTRY C1orf151 (Cat# RC212930, Right lane) cDNA for 48 hrs and lysed. Equivalent amounts of cell lysates (5 ug per lane) were separated by SDS-PAGE and immunoblotted with anti-C1orf151 (Cat# [TA505025]). Positive lysates [LY422307] (100ug) and [LC422307] (20ug) can be purchased separately from OriGene.



Western blot validation of overexpression lysate (Cat# [LY422307]) using anti-DDK antibody (Cat# [TA50011-100]). Left: Cell lysates from untransfected HEK293T cells; Right: Cell lysates from HEK293T cells transfected with RC212930 using transfection reagent MegaTran 2.0 (Cat# [TT210002]).



Coomassie blue staining of purified MICOS10 protein (Cat# [TP312930]). The protein was produced from HEK293T cells transfected with MICOS10 cDNA clone (Cat# RC212930) using MegaTran 2.0 (Cat# [TT210002]).