

Product datasheet for RC212928

TBC1D32 (NM_152730) Human Tagged ORF Clone

Product data:

Product Type:	Expression Plasmids
Product Name:	TBC1D32 (NM_152730) Human Tagged ORF Clone
Tag:	Myc-DDK
Symbol:	TBC1D32
Synonyms:	BROMI; C6orf170; C6orf171
Mammalian Cell Selection:	Neomycin
Vector:	pCMV6-Entry (PS100001)
E. coli Selection:	Kanamycin (25 ug/mL)
ORF Nucleotide Sequence:	>RC212928 representing NM_152730 Red=Cloning site Blue=ORF Green=Tags(s)

TTTTGTAATACGACTCACTATAGGGCGGCCGGAATTCGTCGACTGGATCCGGTACCGAGGAGATCTGCC
GCC**CGATCGCC**

ATGGCCATTTCTCCAGCGAGGACCAGGCGATGCTGCAGGCGATGCTGAGGCGGTTGTTCCAGAGCGTGA
AGGAGAAAATCACGGGTGCCCTTCCCTGGAGTGTGCCGAAGAGATTCTTTACATCTGGAGAAAATGA
TGAAAATTTTCACAACTATGAATTTGTGAAATACCTCAGGCAGCATATAGGCAACACTTTGGTTCTATG
ATTGAAGAAGAAATGGAAAATGCACATCTGATCGGAATCAGGGTGAAGAATGCGGCTATGATACAGTTG
TACAGCAGGTCACTAAAAGAACTCAAGAATCTAAAGAGTACAAAGAAATGATGCATTACCTGAAGAACAT
TATGATAGCTGTGGTCGAGTCTATGATTAACAAGTTTGAAGAAGATGAGACACGAAATCAAGAAAGGCAG
AAAAAATCCAAAAGGAGAAAAGCCATAGTTACCGCACAGACAATTGCTCTGATAGTGATTATCATTTGA
ATCAGAGTTACAAATTTTGTCAAGGAAAATTACAATTGATTTTAGACCAGTTGGATCCTGGGCAACCTAA
AGAGGTGAGATATGAAGCCTTGCAACATTATGTTTCAGCTCCTCCATCTGATGTCCTCAACTGTGAAAAT
TGGACTACTCTCTGCGAAAAACTGACCGTGTCTCTTTAGATCCTGATCCTGTGTTTAGTGACCGGATTT
TAAAATCTGTGCACAGACATTTTGTCTTCTCCATTACATATGACCAAGGAAATTTATAACAAGCTTAGC
TAAGTATTTGGAGTCATACTTTCTTTCTAGGGAAAATCATATTCCTACTCTTTAGCTGGTGTAGATATA
ACTAATCCTAATATGACTCGCTTACTTAAAAGGTTTCGTCTTCTAAATGAATATCAGAAAGAGCTCCAT
CTTTCTGGATTCGTCATCCAGAGAAGTATATGGAAGAAATTTGGAGAGTACTTTGTCTTTGTTAACAGT
TAAACATAATCAAAGCCATGTTGTCTCACAAAAGATTTTGGATCCGATCTACTTTTTGTCATTAGTTGAT
ACCAAGGCTGTGTGGTTCAAAAAGTGGATGCATGCACATTATAGCAGAACTACAGTATTAAGACTTCTTG
AAACGAAATATAAGTCTCTGGTAACTACAGCCATTCAACAGTGTGTTTCAGTACTTTGAAATGTGTAAGAC
TAGGAAAGCTGATGAACTTTGGGACATTCAAAGCATTGCAGAAACAAGCAGAAAATTTCTACTACTTA
GGACAAGAATTACAATATATTTATTTTCACTCACTGTGCCTTTTAGGAAGATTATTGATCTATAAAC
AAGGCAGAAAATTTCTATTAAGCTGAAGAATAAAAAAGGTTTGGTATCCCTCATAGATCTGCTTGT
TCTTTTTACCAACTTATCTATTACTACCAAGTTGTCCAAGATGACATCAGCTGCCCATTCAGAGAAT



[View online »](#)

TACTCTCTGCAAGTATGGTGACTGAAGTCTGTGGATACTCAGTGATCAAAAAGAAATGTGCAGTGGAAAT
GCTTATAAACAACATTGTAATAGAGACTTCTTCAGCCTATTCACAATTTAATGAAAGGAAATGAGGC
ATCTCCAAATGGCTCTGAGACAGCTTTAATTCATATAGCTGGATTTTGGCAAGAATTGCATCTGTAGAA
GAAGGGCTATTTTACTCCTTTATGGAGCAAATATGAACCTTCTGAAGAAAGTCTACAGGTGCTCATA
TAATTGCCAGTTTTCGAAAAAATCTCGATGAAGATATTTCTATATTTCTGGATCAGAAATGTTGCC
TGTGGTTAAAGGAGCTTTTATTTCTGTGTGTCGTCACATATATAGTACATGTGAAGGTTTGCAGGTGTTA
ATCACTTATAATTTGCATGAATCTATAGCAAAGCATGGAAAAAGACAAGTTTGGCTATCAGAAAGAATTC
CTACTCCAGTAGAGGGTTCTGATTCTGTTTCTCAGTAAGCCAGGAATCCAAAAACATTATGGCTTGGGA
AGATAATTTGTTAGATGATTTACTACATTTTGGCTGCCACCCCAAAGGATTACTACTTCTCAAAGAACA
GGTGCTATCAATGAATGTGTGACATTTATATTCATCGATATGCAAAAAAATTACAGGTCAGCAGGCATA
AAAAATTTGGCTATGGAGTTTGGTTACACGAGTGGCATCAACAGCAGCAGGTGGCATTGCACTAAAAAA
GTCAGGGTTTATTAATGAACTTAACTGAATTATGGTCCAATCTGGAATATGGAAGAGATGATGTTAGG
GTAACCCATCCCAGAATACTCCAGTGGATCCTATTGACCGAAGCTGTCAAAAGTCTTTTTAGCACTGG
TGAACCTGTTATCCTATCCTGCTATTTATGAGCTTGAAGGAATCAAGATCTTCTAATAAAACAGAATA
TTCTCTCGTGAAGTCCCAACATGTGTTATTGATATTATTGATAGACTTATAATTTGAATTCTGAAGCT
AAGATTCGTTCTTTATTCAACTATGAACAATCACATATCTTTGGTCTAAGGGACTTTATAATTGATGGCT
TATCAGTGGAGAGAAATCATGTTCTTGTAGAATAAATCTTGTGGTGGGCCATTGGAACGGATTTTGGC
TCCGAGGTTACTCGAAAAGAGTGATAATCCATATCCTTGGCCAATGTTTTCATCATATCCATTGCCAAAC
TGCTATCTGTCAGACATTACAAGAAATGCTGGTATAAAACAAGACAATGATCTTGACAAGCTTTTATTAT
GCCTCAAATATCTGATAAAACAATGAATGGATAGAAAATGCCAAAGACAATTTTGCAAAATGATGAA
AGCCAAACCTGATATAATCAGTGGAGAGGCCTTAATAGAATTACTTGAAAAATTTGTGCTTCATCTCACT
GAAAGCCCATCTGAATGCTACTTCCCTCAGTGGAGTATACAGCTACTGATGCAAAATGTGAAGAATGAAA
GTCTTTTCACTGTGCAGCAGCTTGGCATTAAAAATGACTGTCAGGTATGGCAAATTCCTCAGTCTCTTAAA
AGATGGTGCAGAAAATGATCTTACCTGGGTTTTAAAGCATTGTGAGAGATTCTGAAACAGCAGCAAAT
TCCATAAAATCTTCTCTCTGCTGCAAGGGAATTATGCTGGCCATGACTGGTTTGTATCTTCTCTGT
TCATGATAATGTTGGGAGACAAAGAAAAAATCCCAATTTCTTCATCAATTCTCCAGGCTTCTGACTTC
TGCTTTTCTTTGGTTGCCAAGGCTACATATTTCTAGTTACCTTCTAATGACACTGTAGAATCTGGCATC
CATCCAGTATATTTTGCAGCACCCATTATATTGAAATGCTACTGAAGGCTGAGTTGCCTCTTGTGTTTT
CAGCTTTTACATGTCTGGTTTTGCACCATCACAGATTTGCTGCAATGGATAACCCAGTGTGTTTTGGAA
TTACTTAGATTGGATAGAAATCTGCCATTATATTGCTACTTGTGTTTTCTTGGTCTGATTATCAAGTG
TATATCTGTATAGCTGTATTCAAACATTTACAGCAAGACATTCTACAGCACACTCAGACTCAAGATCTGC
AAGTTTTCTAAAAGAAGAAGCACTGCATGGGTTTCGAGTGAGTGATTATTTGAATACATGGAATTTT
GGAACAAAATACCGAACAGTGCTGCTGAGAGACATGCGGAACATTAGACTGCAGAGCACATA

ACGCGTACGCGGCCGCTCGAGCAGAACTCATCTCAGAAGAGGATCTGGCAGCAAATGATATCCTGGATT
ACAAGGATGACGACGATAAGGTTTAA

Protein Sequence: >RC212928 representing NM_152730
 Red=Cloning site Green=Tags(s)

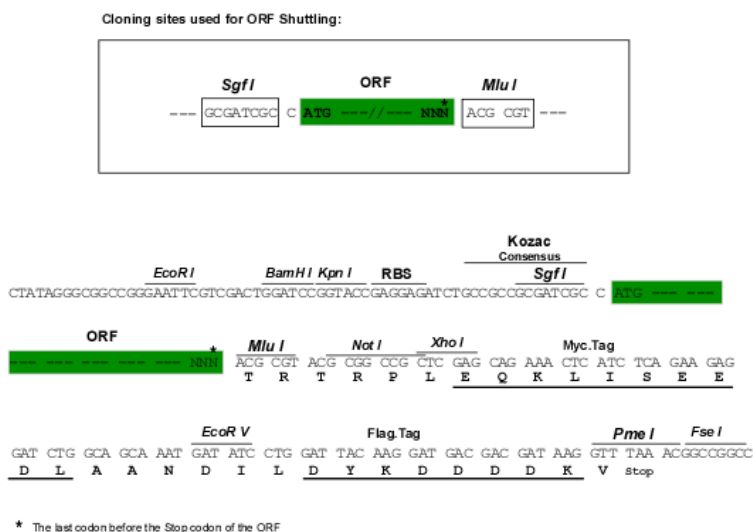
MAHFSSDQAMLQAMLRRLFQSVKEKITGAPSLCAEEILLHLEETDENFHNYEFVKYLRQHGNTLGSM
 IEEEMKCTSDRNQGECEGYDVTVQVTKRTQESKEYKEMMHYLNIMIAVVEISMINKFEEDETRNQRQ
 KKIQKEKSHSYRTDNCSDSDSSLNQSFKCQGLQLILDQLDPGQPKVEYREALQTLCSAPPSDVLNEN
 WTTLCEKLTVSLSDPDVFSRDLKFKCAQTFLLSPLHMTKEIYTSKAKYLESYFLSRENHIPTLSAGVDI
 TNPNMTRLLKVRLLNEYQKEAPSFWRHPEKYMEEIVESTLSLLTVKHNQSHVVSQKILDPIYFFALVD
 TKAVWFKKWMHAHYSRTTVLRLLETKYKSLVTTAIQCCVQYFEMCKTRKADELGHSHKCRNKQKTFYYL
 GQELQYIYFIHSLCLLGRLLIYKQGRKLFPIKLNKKGLVSLIDLLVFTQLIYSPSPKMTSAAHSEN
 YSPASMVTEVLWILSDQKECAVECLYNNIVIETLLQPIHNLKMGNEASPNCSETALIHAGILARIASVE
 EGLILLLYGANMNSSEESPTGAHIAQFSKLLDEDISIFSGSEMLPVVKGAFISVCRHIYSTCEGLQVL
 ITYNLHESIAKAWKTSLLSERIPTVEGSDSVSSVSQESQNIMAWEDNLLDHLFAATPKGLLLLQRT
 GAINECVTFIFNRYAKKLQVSRHKKFGYGVLVTRVASTAAGGIALKKSGFINELITELWSNLEYGRDDVR
 VTHPRTPVPDIDRSCQKSFLLVNLSPAIYELVRNQDLPNKTEYSLREVPTCVIDIIDLRIILNSEA
 KIRSLFNYESHIFGLRDFIIDGLSVERNHLVRLINLVGGPLERILPPRLLKESDNPPYPMFSSYPLPN
 CYLSDITRNAGIKQDNDLKLKLLCLKISDKQTEWIENCQRQFCMMKAKPDIISGEALIELLEKFLVHLT
 ESPSECYFPSVEYATDANVKNESLSSVQQLGIKMTVRYGKFLSLLKDKGAENDLTWVWKHCERFLKQQQT
 SIKSSLCLQGNYAGHDWFVSSLFMIMLGDKETQFLHQFSRLLSAFLWLPRLHISSYLPNDTVESGI
 HPVYFCSTHYIEMLLKAEPLVFSAFHMSGFAPSQICLQWITQCFWNYLDWIEICHYIATCVFLGPDYQV
 YICIAVFKHLQQDILQHTQTQDLQVFLKEEALHGFRVSDYFEYMEILEQNYRTVLLRDMRNIRLQST

TRTRPLEQKLISEEDLAANDILDYKDDDDKV

Chromatograms: https://cdn.origene.com/chromatograms/mk8023_b04.zip

Restriction Sites: SgfI-MluI

Cloning Scheme:

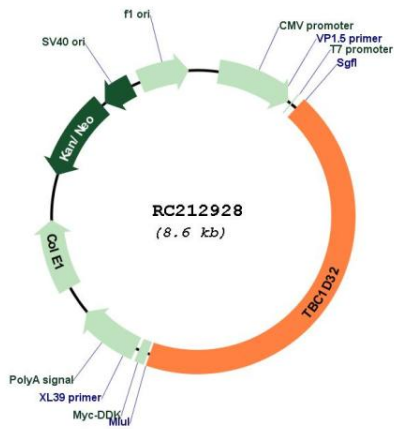


ACCN: NM_152730

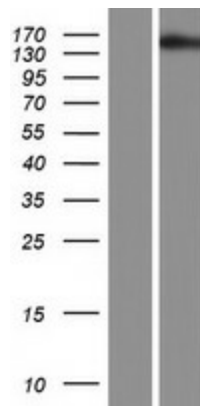
ORF Size: 3771 bp

OTI Disclaimer:	The molecular sequence of this clone aligns with the gene accession number as a point of reference only. However, individual transcript sequences of the same gene can differ through naturally occurring variations (e.g. polymorphisms), each with its own valid existence. This clone is substantially in agreement with the reference, but a complete review of all prevailing variants is recommended prior to use. More info
OTI Annotation:	This clone was engineered to express the complete ORF with an expression tag. Expression varies depending on the nature of the gene.
Components:	The ORF clone is ion-exchange column purified and shipped in a 2D barcoded Matrix tube containing 10ug of transfection-ready, dried plasmid DNA (reconstitute with 100 ul of water).
Reconstitution Method:	<ol style="list-style-type: none">1. Centrifuge at 5,000xg for 5min.2. Carefully open the tube and add 100ul of sterile water to dissolve the DNA.3. Close the tube and incubate for 10 minutes at room temperature.4. Briefly vortex the tube and then do a quick spin (less than 5000xg) to concentrate the liquid at the bottom.5. Store the suspended plasmid at -20°C. The DNA is stable for at least one year from date of shipping when stored at -20°C.
RefSeq:	NM_152730.6
RefSeq Size:	5132 bp
RefSeq ORF:	3774 bp
Locus ID:	221322
UniProt ID:	Q96NH3
Cytogenetics:	6q22.31
MW:	144.6 kDa
Gene Summary:	This gene encodes a TBC-domain containing protein. Studies of a similar protein in mouse and zebrafish suggest that the encoded protein is involved in sonic hedgehog signaling, and that it interacts with and stabilizes cell cycle-related kinase. Alternative splicing results in multiple transcript variants. [provided by RefSeq, Jul 2014]

Product images:



Circular map for RC212928



Western blot validation of overexpression lysate (Cat# [LY407328]) using anti-DDK antibody (Cat# [TA50011-100]). Left: Cell lysates from untransfected HEK293T cells; Right: Cell lysates from HEK293T cells transfected with RC212928 using transfection reagent MegaTran 2.0 (Cat# [TT210002]).