

Product datasheet for **RC212927**

BANP (NM_079837) Human Tagged ORF Clone

Product data:

Product Type:	Expression Plasmids
Product Name:	BANP (NM_079837) Human Tagged ORF Clone
Tag:	Myc-DDK
Symbol:	BANP
Synonyms:	BEND1; SMAR1; SMARBP1
Mammalian Cell Selection:	Neomycin
Vector:	pCMV6-Entry (PS100001)
E. coli Selection:	Kanamycin (25 ug/mL)



[View online »](#)

ORF Nucleotide Sequence:

>RC212927 representing NM_079837
 Red=Cloning site Blue=ORF Green=Tags(s)

TTTTGTAATACGACTCACTATAGGGCGGCCGGAATTCGTCGACTGGATCCGGTACCGAGGAGATCTGCC
 GCC**GCGATCGCC**

ATGATGTCGGAACACGACCTGGCCGATGTGGTTACAGATTGCAGTGAAGACCTGAGCCCTGACCACCCAG
 TTGTTTTGGAGAATCATGTAGTGACAGATGAAGACGAACCTGCTTTGAAACGCCAGCGACTAGAAATCAA
 TTGCCAGGATCCATCTATAAAGTCATTCCTGTATTCCATCAACCAGACAATCTGCTTGGCGTTGGATAGC
 ATTGAAGCAAATGCAAGCCCTGGAGGCTACTTGTAATCCTTAGAAGAAAAGCTGGATCTGGTCACGA
 ACAAGCAGCACAGCCCCATCCAGGTCCCATGGTGGCCGGCTCCCTCTCGGGGCAACCCAGACGTGCAA
 CAAAGTGCATGCGCTGTGCCTGGGCGTCGGCAGAACACCATTGTGGTGAAGGTGCCGGGCAAGAAGAC
 AGCCACCACGAGGACGGGAGAGCGGCTCGGAGGCCAGCGACTCTGTGTCCAGCTGTGGCAGCGGGCA
 GTCAGAGCATCGGAGCAACGTACGCTCATCACCTGAACTCGAAGAGGACTACCCCAATGGCACCTG
 GCTGGGCGACGAGAACAACCCCGAGATGCGGGTACGCTGCGCCATCATCCCTCCGACATGCTGCACATC
 AGCACCAACTGCCGCACGGCCGAGAAGATGGCGCTCACGCTGCTGGACTACCTCTTCCACCAGGAGTGC
 AGGCTGTGTCCAACCTCTCGGGGAGGGCAAGCACGGGAAGAAGCAGCTGGACCCGCTCACCATCTACGG
 CATCCGGTGTACCTTTCTATAAATTTGGCATCACAGAAATCCGACTGGTACCGAATCAAGCAGAGCATC
 GACTCCAAGTGCCGCACGGCGTGGCGGCCAAGCAGCGGGGCCAGAGCCTGGCGGTCAAGAGCTTCTCGC
 GGAGAAGCCCAACTCGTCTCTACTGCCCTTACAGCCGATGATGAGCACCCACCTCCTGCCAGCGA
 GCTCCCGCAGCCACAGCCGACGCCGAGGCCCTGCACTACGCGCTGGCCAACGCACAGCAGGTGCAGATC
 CACCAGATCGGAGAAGACGGACAGGTGCAAGTAATCCACAGGGACACCTCCACATCGCCAGGTGCCCG
 AGGGGAGCAAGTCCAGATCACGCAGGACAGCGAGGGCAACCTCCAGATCCATCACGTGGGCGAGGACGG
 TCAGTTCTAGAGGCCACCCGCATCCCTCCTGGCCCATCCGTCCTCAAAGCCAGCAGTGGCCAG
 GTGCTGCAGGGTGCACAGCTGATCGCCGTGGCCTCCTCGACCCCGGGCGGGCGGTGGATGGGTGCG
 CACTCCAGGGCAGCGACATCCAGGTTAGTACGTGCAGCTGGCGCCAGTGAAGTACCACAGCGCCGGGGC
 ACAGACGGCCGAAGCCCTGCAGCCACGCTACAGCCGGAGATGCAGCTCGAGCACGGGGCCATCCAGATT
 CAG

ACGCGTACGCGGCCGCTCGAGCAGAACTCATCTCAGAAGAGGATCTGGCAGCAAATGATATCCTGGATT
 ACAAGGATGACGACGATAAGGTTTAA

Protein Sequence:

>RC212927 representing NM_079837
 Red=Cloning site Green=Tags(s)

MMSEHDLADVQIAVEDLSPDHPVVLENHVVTDEDEPALKRQRLEINCQDPSIKSFLYSINQTI CLR L DS
 IEAKLQALEATCKSLEEKLDLVTNKQHSPIQVPMVAGSPLGATQTCNKVRCVAVPGRRQNTIVVKVPGQED
 SHHEDGESGSEASDSVSSCGQAGSQSIGSNVTLITLNSEEDYPNGTWLGDENNPEMRVRCIIPSDMLHI
 STNCRATAEKMALTLLDYLFHREVQAVSNLSGQKHKQKLDPLTIYGIRCHLFYKFGITESDWYRIKQSI
 DSKCRTAWRRKQRGQSLAVKFSRRTPNSSYCPSEPMSTPPPASELPQPQPQALHYALANAQQVQI
 HQIGEDGQVQVIPQGH L HIAQVPQGEQVQITQDSEGNLQIHHVQDQQLLEATRIPCLLAPSVFKASSGQ
 VLQGAQLI AVASSDPAAGVDGSPLQGS DIQVQYVQLAPVSDHTAGAQTAEALQPTLQPEMQLEHGAIQI
 Q

TRTRPLEQKLISEEDLAANDILDYKDDDDKV

Chromatograms:

https://cdn.origene.com/chromatograms/mk6428_d03.zip

Restriction Sites:

Sgfl-Mlul

Cloning Scheme:


ACCN: NM_079837

ORF Size: 1473 bp

OTI Disclaimer: The molecular sequence of this clone aligns with the gene accession number as a point of reference only. However, individual transcript sequences of the same gene can differ through naturally occurring variations (e.g. polymorphisms), each with its own valid existence. This clone is substantially in agreement with the reference, but a complete review of all prevailing variants is recommended prior to use. [More info](#)

OTI Annotation: This clone was engineered to express the complete ORF with an expression tag. Expression varies depending on the nature of the gene.

Components: The ORF clone is ion-exchange column purified and shipped in a 2D barcoded Matrix tube containing 10ug of transfection-ready, dried plasmid DNA (reconstitute with 100 ul of water).

Reconstitution Method:

1. Centrifuge at 5,000xg for 5min.
2. Carefully open the tube and add 100ul of sterile water to dissolve the DNA.
3. Close the tube and incubate for 10 minutes at room temperature.
4. Briefly vortex the tube and then do a quick spin (less than 5000xg) to concentrate the liquid at the bottom.
5. Store the suspended plasmid at -20°C. The DNA is stable for at least one year from date of shipping when stored at -20°C.

RefSeq: [NM_079837.3](#)

RefSeq Size: 2296 bp

RefSeq ORF: 1476 bp

Locus ID: 54971

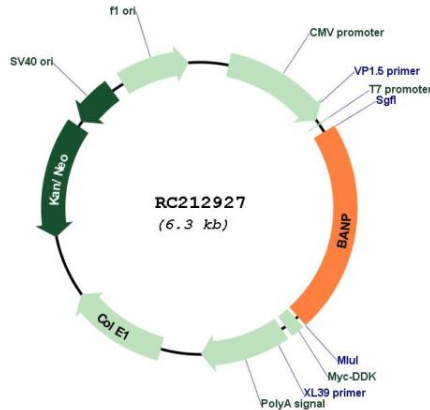
UniProt ID: [Q8N9N5](#)

Cytogenetics: 16q24.2

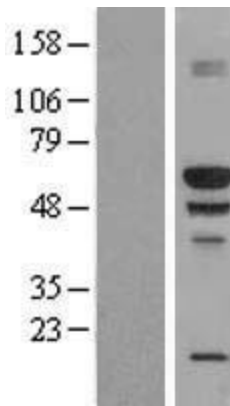
MW: 53.3 kDa

Gene Summary: This gene encodes a protein that binds to matrix attachment regions. The protein forms a complex with p53 and negatively regulates p53 transcription, and functions as a tumor suppressor and cell cycle regulator. Multiple transcript variants encoding different isoforms have been found for this gene. [provided by RefSeq, Mar 2010]

Product images:



Circular map for RC212927



Western blot validation of overexpression lysate (Cat# [LY409206]) using anti-DDK antibody (Cat# [TA50011-100]). Left: Cell lysates from untransfected HEK293T cells; Right: Cell lysates from HEK293T cells transfected with RC212927 using transfection reagent MegaTran 2.0 (Cat# [TT210002]).