

## Product datasheet for RC212920

### KCNK18 (NM\_181840) Human Tagged ORF Clone

#### Product data:

**Product Type:** Expression Plasmids  
**Product Name:** KCNK18 (NM\_181840) Human Tagged ORF Clone  
**Tag:** Myc-DDK  
**Symbol:** KCNK18  
**Synonyms:** K2p18.1; MGR13; TRESK; TRESK-2; TRESK2; TRIK  
**Mammalian Cell Selection:** Neomycin  
**Vector:** pCMV6-Entry (PS100001)  
**E. coli Selection:** Kanamycin (25 ug/mL)  
**ORF Nucleotide Sequence:** >RC212920 representing NM\_181840  
 Red=Cloning site Blue=ORF Green=Tags(s)

TTTTGTAATACGACTCACTATAGGGCGCCGGGAATTCGTCGACTGGATCCGGTACCGAGGAGATCTGCC  
 GCC**CGATCGCC**

ATGGAGGTCTCGGGCACCCCCAGGCCAGGAGATGCTGCCAGAGGCCCTGGGAAAGCTCTTCCCTGGCC  
 TCTGCTTCTCTGCTTTCTGGTACCTACGCCCTGGTGGGTGCTGTGGTCTTCTCTGCCATTGAGGACGG  
 CCAGGTCCTGGTGGCAGCAGATGATGGAGAGTTTGAAGAAGTTCTGGAGGAGCTGCAGAATCTTGAAC  
 TGCAGTAAACAGTGGTGAAGACAGAAAACAGGATCTCCAGGGCATCTGCAGAAGGTGAAGCCTCAGT  
 GGTAAACAGGACCACACTGGTCCTTCTGAGCTCGCTTTTTTCTGCTGCACGGTGTTCAGCACCGT  
 GGGCTATGGCTACATCTACCCCGTCAACAGGCTTGGCAAGTACTTGTGCATGCTCTATGCTCTTTGGT  
 ATCCCCCTGATGTTCTCGTTCTCACGGACACAGGCGACATCCTGGCAACCATCTTATCTACATCTTATA  
 ATCGGTTCCGAAAATTCCTTTCTTTACCCGCCCTCTCTCCAAGTGGTGCCCAAATCTCTCTTCAA  
 GAAAAACCGGACCCCAAGCCCGCAGATGAAGCTGTCCCTCAGATCATCATCAGTGTGAAGAGCTTCCA  
 GGCCCCAACTTGGCACATGTCTTACGCCCAAGCTGCAGCATGGAGCTGTTTGAGAGATCTCATGCGC  
 TAGAGAAACAGAACACTGCAACTGCCCCACAAGCCATGGAGAGGAGTAACCTCGTGTCCCGAAGTGGT  
 GTTGGGAAGACTCTACTCCATCATCAGCAACCTGGATGAAGTTGGACAGCAGGTGGAGAGTTGGAC  
 ATCCCCCTCCCCATCATTGCCCTATTGTTTTGCTTACATTTCTGTGCAGCTGCCATCCTCCCTTCT  
 GGGAGACACAGTTGGATTCGAGAATGCCTTCTATTTCTGCTTTGTACACTCACCACCATTTGGGTTGG  
 GGATACTGTTTTAGAACCCCTAACTTCTTCTGTTCTTCTCCATTTATATCATCGTTGGAAATGGAGATT  
 GTGTTTATTGCTTTCAAGTTGGTGCAAAACAGGCTGATTGACATATACAAAAATGTTATGCTATTCTTTG  
 CAAAAGGGAAGTTTTACCACCTGTAAAAAG

**ACGGT**ACGGCGCGCTCGAGCAGAACTCATCTCAGAAGAGGATCTGGCAGCAATGATATCCTGGATT  
 ACAAGGATGACGACGATAAGGTTTAA



[View online >](#)

**Protein Sequence:** >RC212920 representing NM\_181840  
Red=Cloning site Green=Tags(s)

```
MEVSGHPQARRCCPEALGKLPGLCFLCFLVITYALVGAVVFSAIEDGQVLVAADDGEFEKFLLEELCRILN
CSETVVEDRKQDLQGHLLQVKPQWFNRTHWSFLSSLFFCCTVFSTVGYGYIYPVTRLGKYL CML YALFG
IPLMFLVLTDTGDILATILSTSYNRFKFPFFTRPLL SKWCPSKSLFKKKPDPKPADEAVPQIIISAEELP
GPKLGTCPSPSCSMELFERSHALEKQNTLQLPPQAMERSNSCPPELVLRGRLSYSIISNLDEVGQQVERLD
IPLPIIALIVFAYISCAAAILPFWETQLDFENAFYFCFVTLTTIGFGDTVLEHPNFFLFFSIYIIIVGMEI
VFIAFKLVQNRLIDIYKNVMLFFAKGKYHLVKK
```

TRTRPLEQKLISEEDLAANDILDYKDDDDKVV

**Chromatograms:** [https://cdn.origene.com/chromatograms/mk6120\\_c04.zip](https://cdn.origene.com/chromatograms/mk6120_c04.zip)

**Restriction Sites:** SgfI-MluI

**Cloning Scheme:**



\* The last codon before the Stop codon of the ORF

**ACCN:** NM\_181840

**ORF Size:** 1152 bp

**OTI Disclaimer:** The molecular sequence of this clone aligns with the gene accession number as a point of reference only. However, individual transcript sequences of the same gene can differ through naturally occurring variations (e.g. polymorphisms), each with its own valid existence. This clone is substantially in agreement with the reference, but a complete review of all prevailing variants is recommended prior to use. [More info](#)

**OTI Annotation:** This clone was engineered to express the complete ORF with an expression tag. Expression varies depending on the nature of the gene.

**Components:** The ORF clone is ion-exchange column purified and shipped in a 2D barcoded Matrix tube containing 10ug of transfection-ready, dried plasmid DNA (reconstitute with 100 ul of water).

**Reconstitution Method:**

1. Centrifuge at 5,000xg for 5min.
2. Carefully open the tube and add 100ul of sterile water to dissolve the DNA.
3. Close the tube and incubate for 10 minutes at room temperature.
4. Briefly vortex the tube and then do a quick spin (less than 5000xg) to concentrate the liquid at the bottom.
5. Store the suspended plasmid at -20°C. The DNA is stable for at least one year from date of shipping when stored at -20°C.

**RefSeq:** [NM\\_181840.1](#), [NP\\_862823.1](#)

**RefSeq Size:** 1155 bp

**RefSeq ORF:** 1155 bp

**Locus ID:** 338567

**UniProt ID:** [Q7Z418](#)

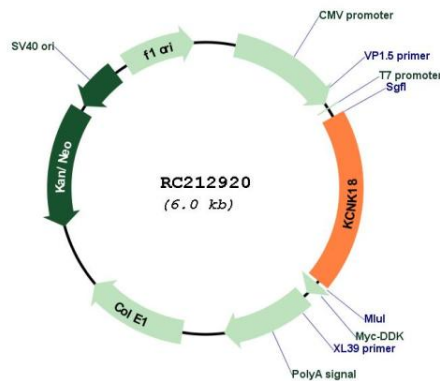
**Cytogenetics:** 10q25.3

**Protein Families:** Ion Channels: Potassium, Transmembrane

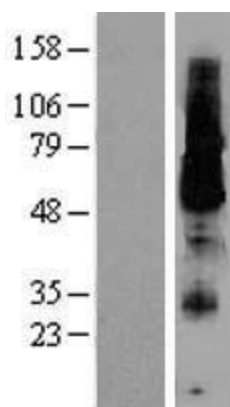
**MW:** 43.5 kDa

**Gene Summary:** Potassium channels play a role in many cellular processes including maintenance of the action potential, muscle contraction, hormone secretion, osmotic regulation, and ion flow. This gene encodes a member of the superfamily of potassium channel proteins containing two pore-forming P domains and the encoded protein functions as an outward rectifying potassium channel. A mutation in this gene has been found to be associated with migraine with aura.[provided by RefSeq, Jan 2011]

### Product images:



Circular map for RC212920



Western blot validation of overexpression lysate (Cat# [LY403632]) using anti-DDK antibody (Cat# [TA50011-100]). Left: Cell lysates from untransfected HEK293T cells; Right: Cell lysates from HEK293T cells transfected with RC212920 using transfection reagent MegaTran 2.0 (Cat# [TT210002]).